

Physical Address: 345 Comanche St.
Mail to: Box 384 Kiowa, CO 80117
Ph. 303-621-8672 - Fax 303-621-2717
www.highprairiesurvey.com

Job # 12111-Harley #3

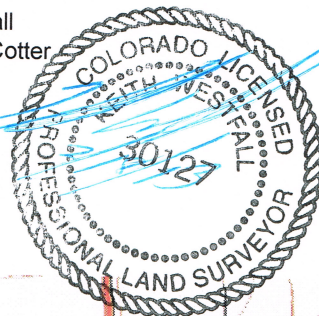
Inv # 2294

High Prairie Surveying of Kiowa, Colorado has in accordance with a request from **PRONGHORN OPERATING LLC** has determined the location of **Harley #3** to be **1869 feet FSL**, and **2013 feet FWL**, (90° off Section lines) of **SECTION 5**, Township **14s**, Range **44w** of the 6th Principal Meridian, **Cheyenne County**, Colorado.

Date: Staked on 2/12/13 drawn on 2/15/13.

Re: Staked by Keith Westfall

Drawn: Drawn by Dustin Cotter



Access Road Map

