

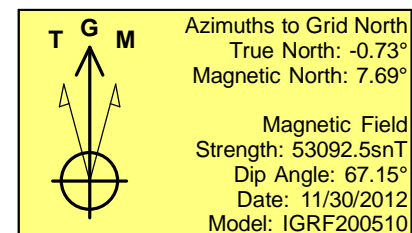
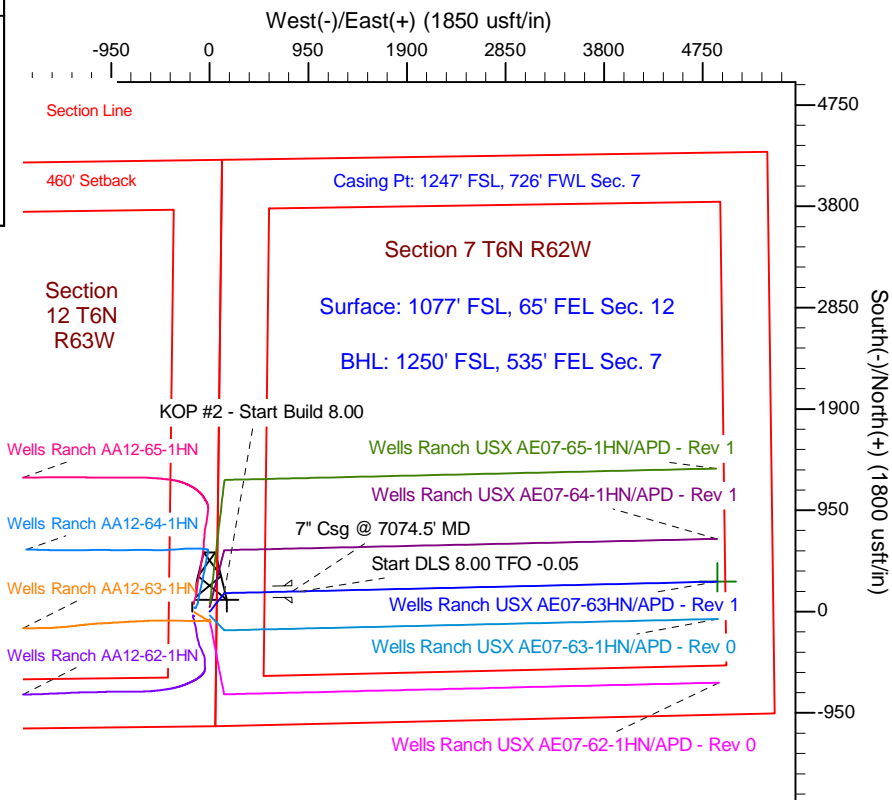
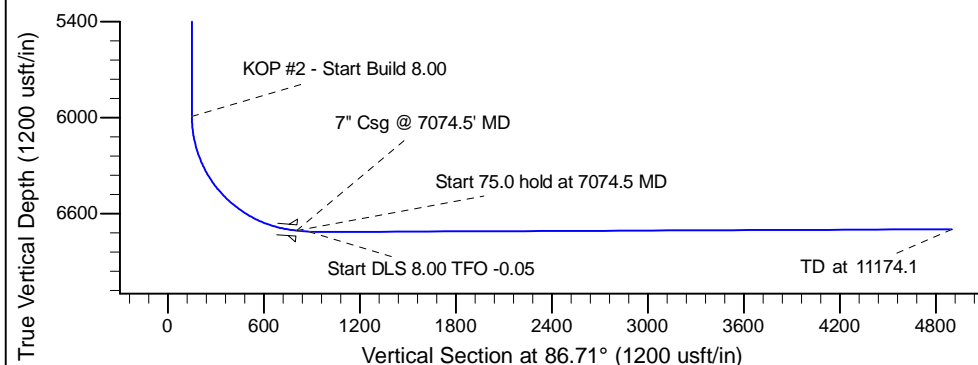
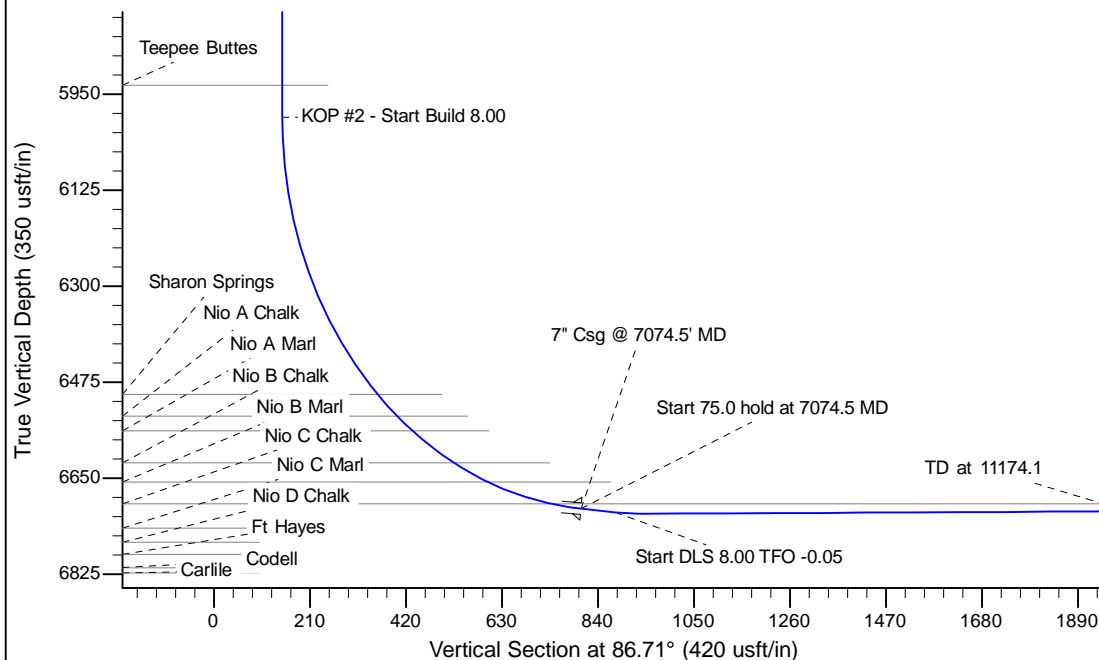
Project: Wattenberg Field
 Site: AE (Sec.12-T06N-R63W) Weld County, CO
 Well: Wells Ranch USX AE07-63HN
 Wellbore: Original Drilling
 Design: APD - Rev 1

Northern Region Drilling

Geodetic System: US State Plane 1983
 Datum: North American Datum 1983
 Ellipsoid: GRS 1980
 Zone: Colorado Northern Zone
 System Datum: Mean Sea Level

SECTION DETAILS

Sec	MD	Inc	Azi	TVD	+N/-S	+E/-W	Dleg	TFace	VSect	Target
1	0.0	0.00	0.00	0.0	0.0	0.0	0.00	0.00	0.0	
2	2200.0	0.00	0.00	2200.0	0.0	0.0	0.00	0.00	0.0	
3	2679.8	12.00	38.98	2676.3	38.9	31.5	2.50	38.98	33.7	
4	3269.0	12.00	38.98	3252.7	134.1	108.5	0.00	0.00	116.0	
5	3748.9	0.00	0.00	3729.0	173.0	140.0	2.50	180.00	149.7	
6	6012.0	0.00	0.00	5992.1	173.0	140.0	0.00	0.00	149.7	
7	7074.5	85.00	88.70	6705.6	187.8	793.6	8.00	88.70	803.1	
8	7149.5	85.00	88.70	6712.1	189.5	868.3	0.00	0.00	877.7	
9	7215.1	90.25	88.70	6714.9	191.0	933.8	8.00	-0.05	943.3	
10	11174.1	90.25	88.70	6697.6	281.1	4891.7	0.00	0.00	4899.8	Wells Ranch USX AE07-63HN BHL 1250'FSL, 535'FEL



WELL DETAILS: Wells Ranch USX AE07-63HN			
Ground Level:	4856.0	Latitude	40.496780
Northing	1425800.52	Longitude	-104.375450
Easting	3312743.32		
Plan: APD - Rev 1 (Wells Ranch USX AE07-63HN/Original Drilling)			
Created By:	Carrie Willers	Date:	17:01, December 19 2012
Checked:		Date:	
Reviewed:		Date:	
Approved:		Date:	