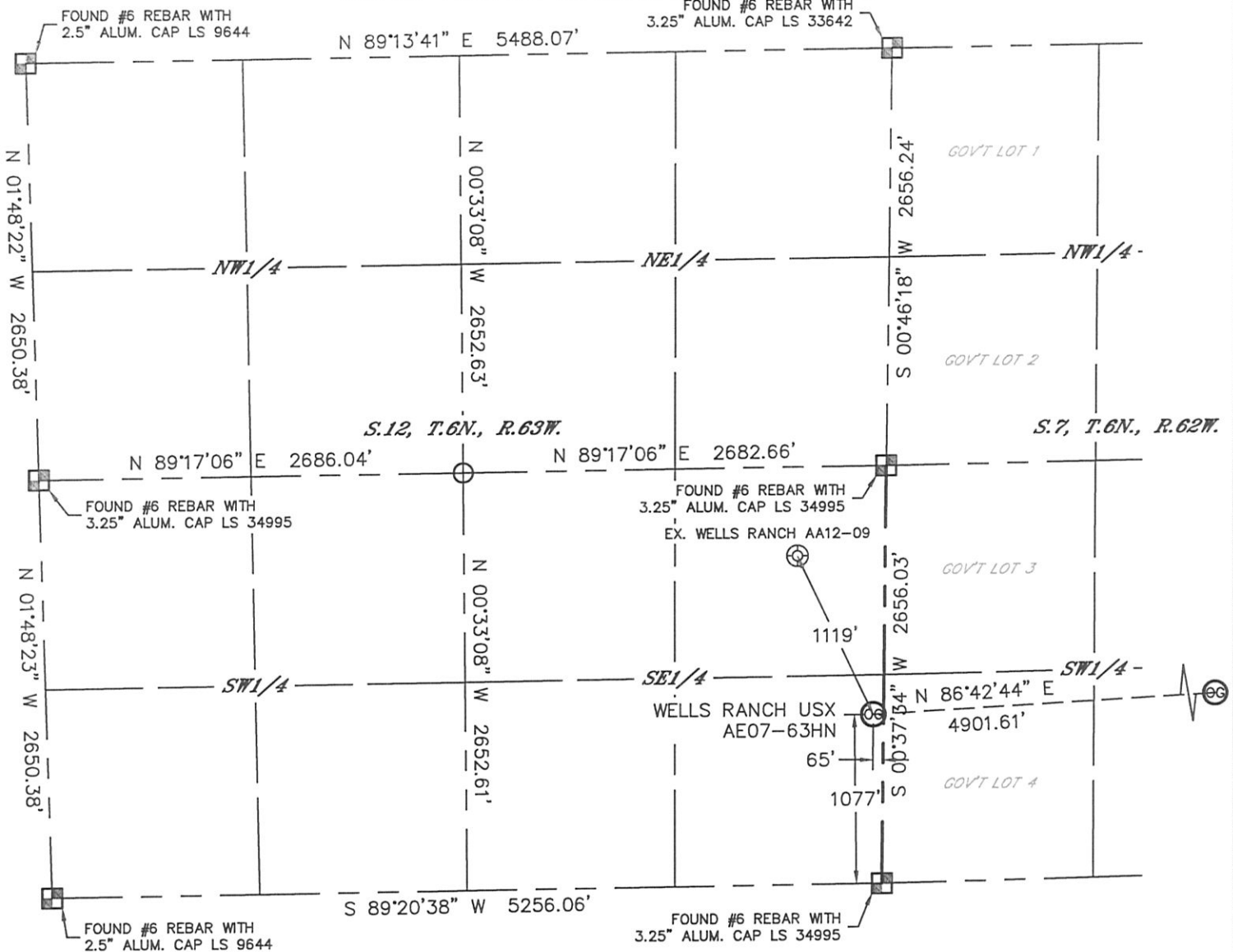


# WELL LOCATION CERTIFICATE

SECTION: 12  
TOWNSHIP: 6N  
RANGE: 63W

THIS MAP DOES NOT REPRESENT A BOUNDARY SURVEY



In accordance with a request from CJ Pietri with Noble Energy Inc. Lat40°, Inc. has determined the surface location of the WELLS RANCH USX AE07-63HN to be 1077' from the SOUTH line and 65' from the EAST line as measured at right angles from the section lines of Section 12, Township 6 North, Range 63 West and the bottom hole to be 1250' from the SOUTH line and 535' from the EAST line as measured at right angles from the section lines of Section 7, Township 6 North, Range 62 West of the Sixth Principal Meridian, County of Weld, State of Colorado.

I hereby state that this Well Location Certificate was prepared by me, or under my direct supervision, that the fieldwork was completed on 06/27/12, for and on behalf of Noble Energy Inc. That this is not a Land Survey Plat or an Improvement Survey Plat, and that it is not to be relied upon for establishment of fence, building, or other future improvement lines.

## SURFACE LOCATION

LAT: 40.49678°N  
LONG: 104.37545°W  
PDOP: 1.2  
ELEV: 4856'  
1/4, 1/4: SE1/4SE1/4  
NEAREST PROPERTY LINE: 65' E

## BOTTOM HOLE

LAT: 40.49738°N  
LONG: 104.35785°W

## NOTE:

- 1) Bearings shown are Grid Bearings of the Colorado State Plane Coordinate System, North Zone, North American Datum 1983/2007. The lineal dimensions as contained herein are based upon the "U.S. Survey Foot."
- 2) Ground elevations are based on an observed GPS elevation (NAVD 1988 DATUM).
- 3) NEAREST EXISTING WELL: WELLS RANCH AA12-09, 1119'
- 4) IMPROVEMENTS: See LOCATION DRAWING for all visible improvements within 400' of disturbed area.
- 5) SURFACE USE: RANGELAND
- 6) INSTRUMENT OPERATOR: ADAM KELLY

## NOTE

According to Colorado law, you must commence any legal action based upon any defect in this W.L.C. within three years after you discover such defect. In no event, may any action based upon any defect in this survey be commenced more than ten years after the date of the certificate shown hereon. (13-80-105 C.R.S.)

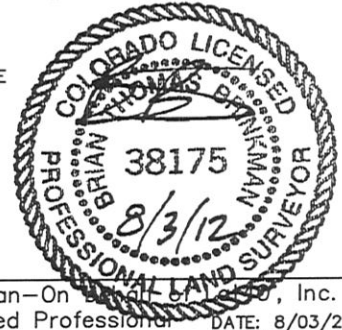
## LEGEND

- = ALIQUOT MONUMENT AS DESCRIBED
- = CALCULATED POSITION

## SHEET 1 OF 2

Brian T. Brinkman-On Behalf of Lat40°, Inc.  
Colorado Licensed Professional  
Land Surveyor No. 38175

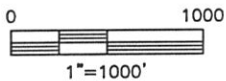
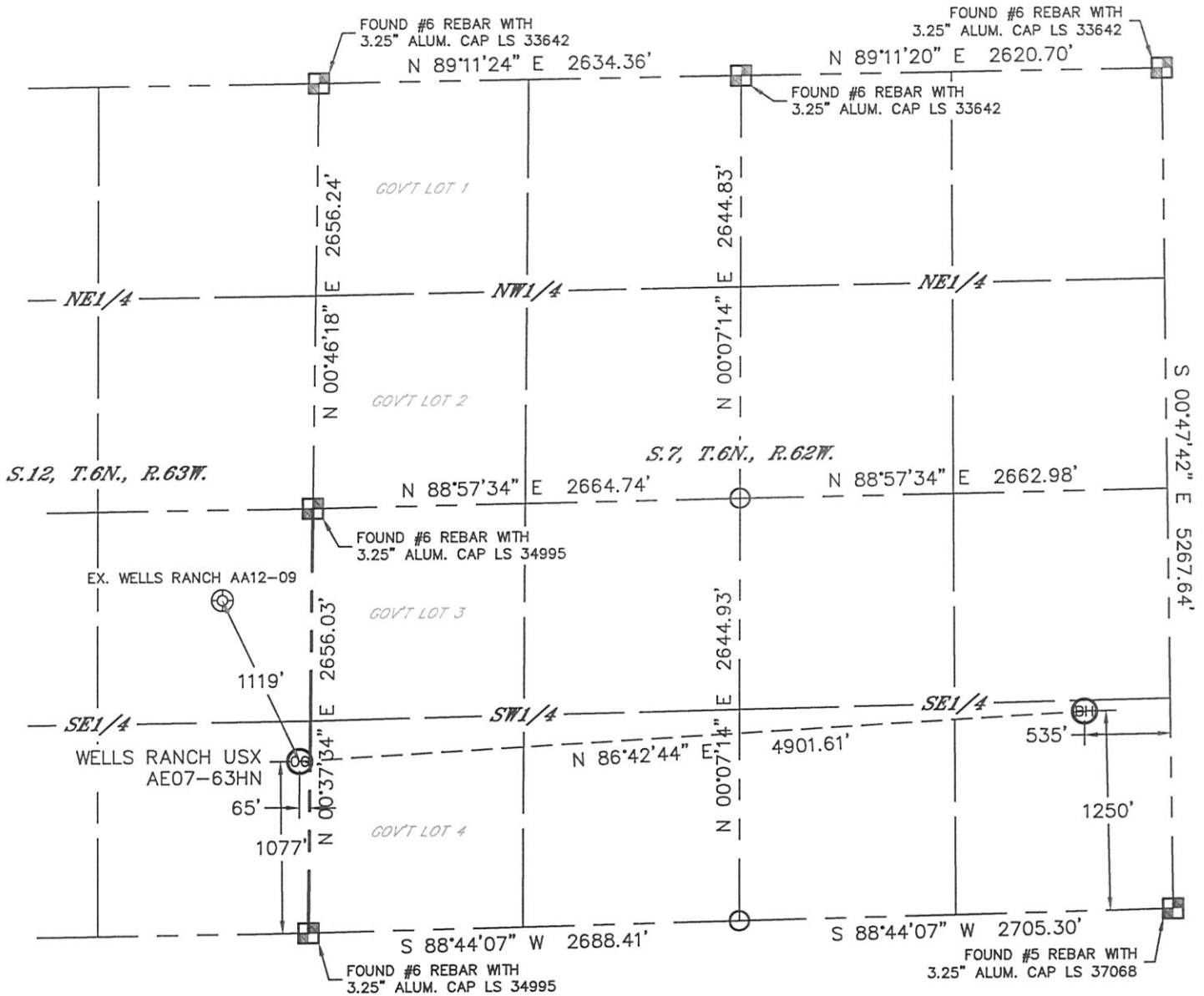
DATE: 8/03/2012  
PROJECT#: 2012094





# WELL LOCATION CERTIFICATE

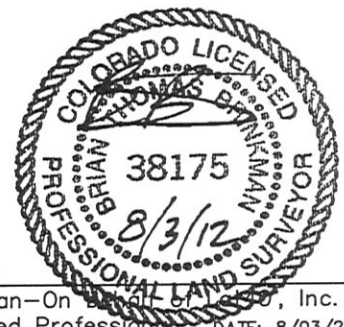
THIS MAP DOES NOT REPRESENT A BOUNDARY SURVEY

SECTION: 12  
TOWNSHIP: 6N  
RANGE: 63W



**NOTE**  
According to Colorado law, you must commence any legal action based upon any defect in this W.L.C. within three years after you discover such defect. In no event, may any action based upon any defect in this survey be commenced more than ten years after the date of the certificate shown hereon. (13-80-105 C.R.S.)

- LEGEND**
-  = ALIQUOT MONUMENT AS DESCRIBED
  -  = CALCULATED POSITION



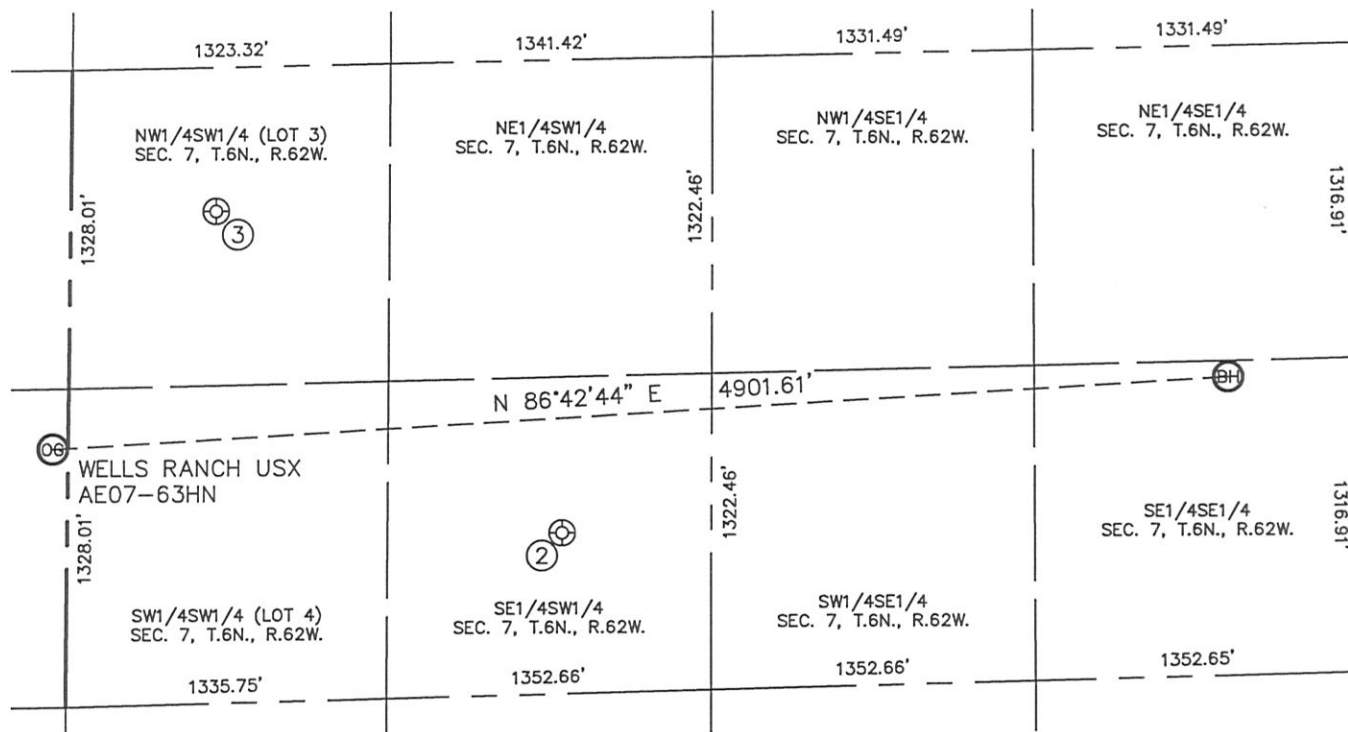
**SHEET 2 OF 2**

Brian T. Brinkman—On behalf of Lat40°, Inc.  
Colorado Licensed Professional  
Land Surveyor No. 38175  
DATE: 8/03/2012  
PROJECT#: 2012094

# SITE SKETCH

WELLS RANCH USX AE07-63HN

SECTION: 12  
TOWNSHIP: 6N  
RANGE: 63W



- |                        |                        |
|------------------------|------------------------|
| ②                      | ③                      |
| WELLS RANCH USX AE7-14 | WELLS RANCH USX AE7-12 |
| SE1/4SW1/4             | NW1/4SW1/4 (LOT 3)     |
| 673' FSL               | 2051' FSL              |
| 2059' FWL              | 603' FWL               |
| LAT-40.49573°N         | LAT-40.49947°N         |
| LONG-104.36784°W       | LONG-104.37297°W       |
| PDOP: 1.5              | PDOP: 1.3              |
| ELEV: 4904'            | ELEV: 4872'            |

