

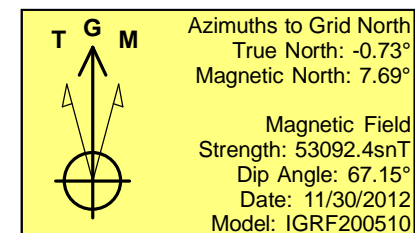
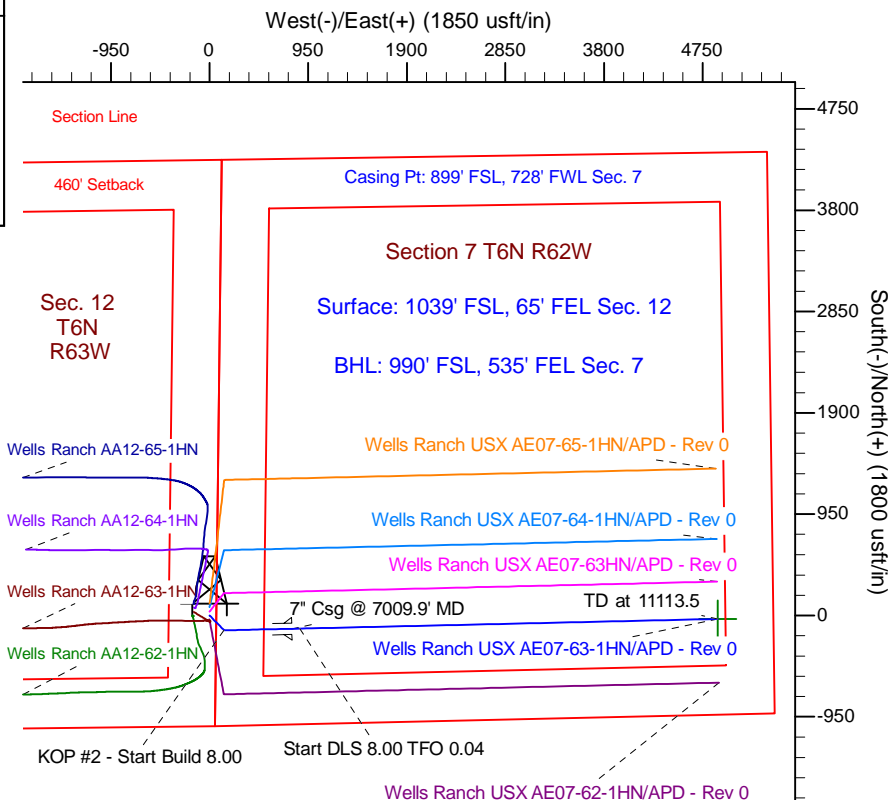
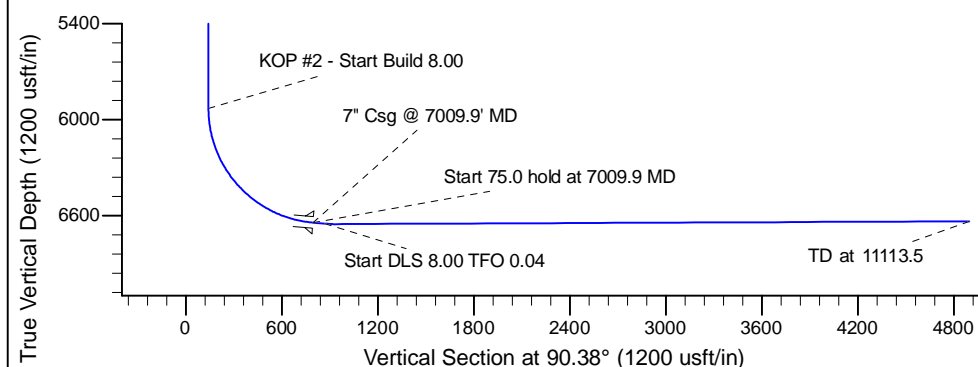
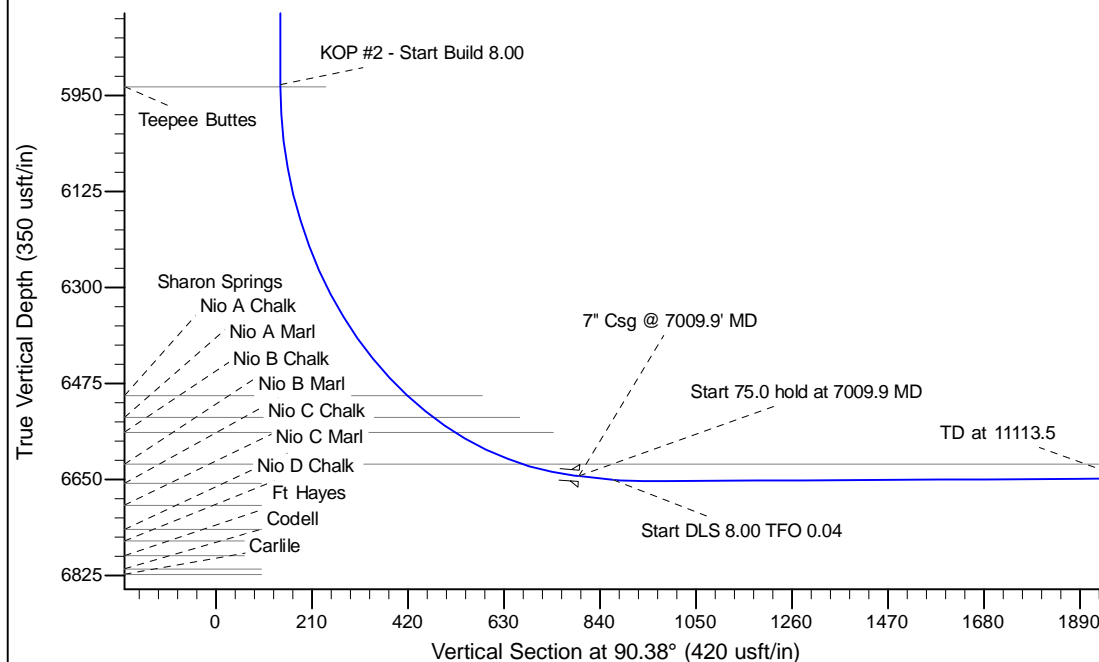
Project: Wattenberg Field
 Site: AE (Sec.12-T06N-R63W) Weld County, CO
 Well: Wells Ranch USX AE07-63-1HN
 Wellbore: Original Drilling
 Design: APD - Rev 0

Northern Region Drilling

Geodetic System: US State Plane 1983
 Datum: North American Datum 1983
 Ellipsoid: GRS 1980
 Zone: Colorado Northern Zone
 System Datum: Mean Sea Level

SECTION DETAILS

Sec	MD	Inc	Azi	TVD	+N/-S	+E/-W	Dleg	TFace	VSec	Target
1	0.0	0.00	0.00	0.0	0.0	0.0	0.00	0.00	0.0	
2	2000.0	0.00	0.00	2000.0	0.0	0.0	0.00	0.00	0.0	
3	2479.9	12.00	134.79	2476.4	-35.3	35.5	2.50	134.79	35.8	
4	2947.3	12.00	134.79	2933.6	-103.7	104.5	0.00	0.00	105.2	
5	3427.2	0.00	0.00	3410.0	-139.0	140.0	2.50	180.00	140.9	
6	5947.4	0.00	0.00	5930.2	-139.0	140.0	0.00	0.00	140.9	
7	7009.9	85.00	88.71	6643.7	-124.3	793.6	8.00	88.71	794.4	
8	7084.9	85.00	88.71	6650.2	-122.6	868.3	0.00	0.00	869.1	
9	7150.5	90.25	88.71	6652.9	-121.1	933.8	8.00	0.04	934.6	
10	11113.5	90.25	88.71	6635.6	-32.1	4895.8	0.00	0.00	4895.9	Wells Ranch USX AE07-63-1HN BHL 900'FSL, 535'FEL



WELL DETAILS: Wells Ranch USX AE07-63-1HN			
Ground Level:	4856.0	Latitude	40.496680
North	1425764.09	East	3312743.78
Longitude	-104.375450		
Plan: APD - Rev 0 (Wells Ranch USX AE07-63-1HN/Original Drilling)			
Created By:	Carrie Willers	Date:	13:50, December 18 2012
Checked:		Date:	
Reviewed:		Date:	
Approved:		Date:	