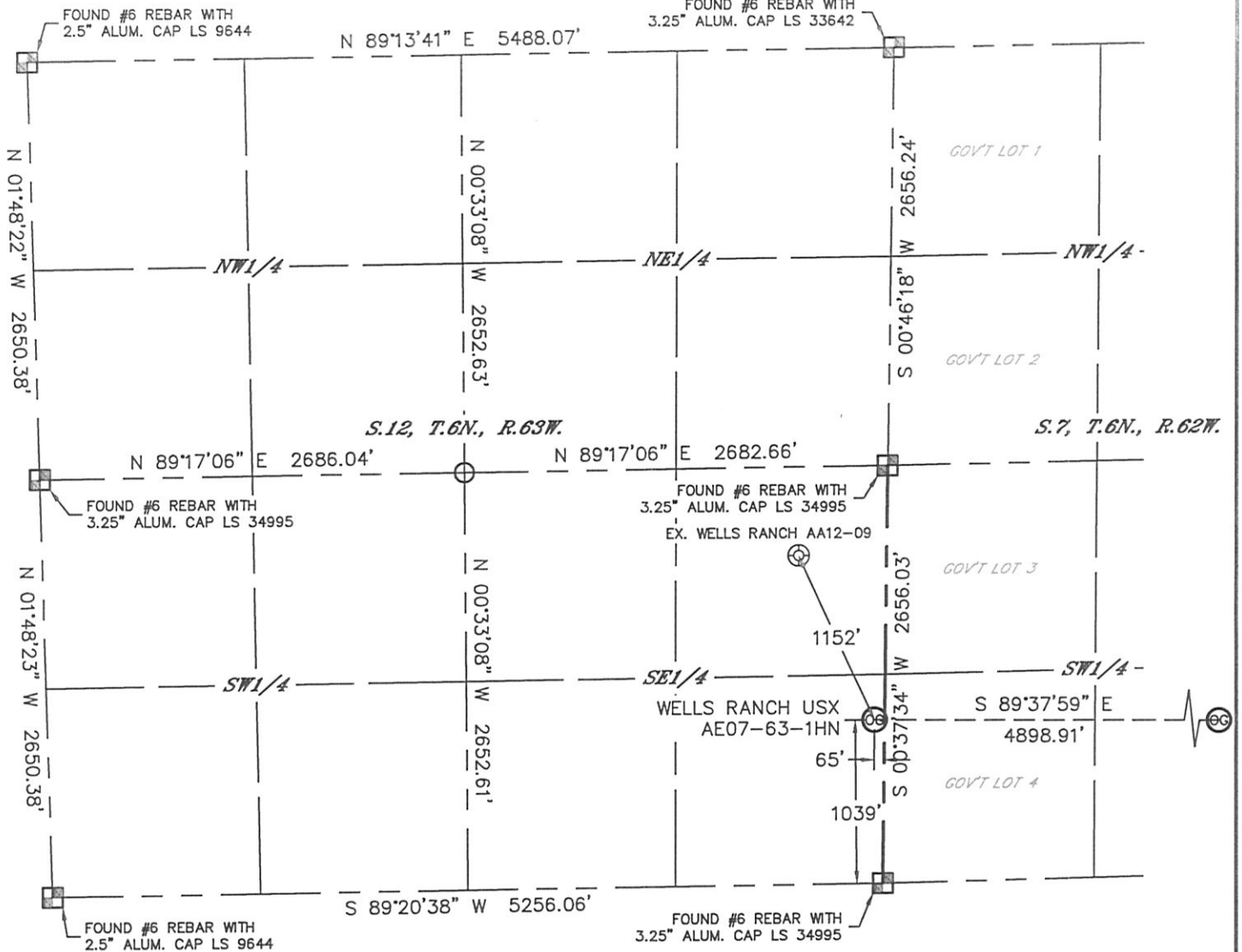


# WELL LOCATION CERTIFICATE

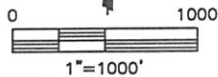
SECTION: 12  
TOWNSHIP: 6N  
RANGE: 63W

THIS MAP DOES NOT REPRESENT A BOUNDARY SURVEY



In accordance with a request from C.J. Pietri with Noble Energy Inc. Lat40°, Inc. has determined the surface location of the WELLS RANCH USX AE07-63-1HN to be 1039' from the SOUTH line and 65' from the EAST line as measured at right angles from the section lines of Section 12, Township 6 North, Range 63 West and the bottom hole to be 900' from the SOUTH line and 535' from the EAST line as measured at right angles from the section lines of Section 7, Township 6 North, Range 62 West of the Sixth Principal Meridian, County of Weld, State of Colorado.

I hereby state that this Well Location Certificate was prepared by me, or under my direct supervision, that the fieldwork was completed on 06/27/12, for and on behalf of Noble Energy Inc. That this is not a Land Survey Plat or an Improvement Survey Plat, and that it is not to be relied upon for establishment of fence, building, or other future improvement lines.



**NOTE:**

- 1) Bearings shown are Grid Bearings of the Colorado State Plane Coordinate System, North Zone, North American Datum 1983/2007. The lineal dimensions as contained herein are based upon the "U.S. Survey Foot."
- 2) Ground elevations are based on an observed GPS elevation (NAVD 1988 DATUM).
- 3) NEAREST EXISTING WELL: WELLS RANCH AA12-09, 1152'
- 4) IMPROVEMENTS: See LOCATION DRAWING for all visible improvements within 400' of disturbed area.
- 5) SURFACE USE: RANGELAND
- 6) INSTRUMENT OPERATOR: ADAM KELLY

**NOTE**

According to Colorado law, you must commence any legal action based upon any defect in this W.L.C. within three years after you discover such defect. In no event, may any action based upon any defect in this survey be commenced more than ten years after the date of the certificate shown hereon. (13-80-105 C.R.S.)

**LEGEND**

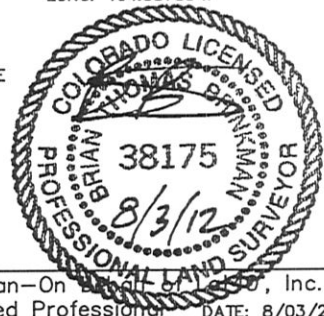
- = ALIQUOT MONUMENT AS DESCRIBED
- = CALCULATED POSITION

**SURFACE LOCATION**

LAT: 40.49668°N  
LONG: 104.37545°W  
PDOP: 1.2  
ELEV: 4856'  
1/4, 1/4: SE1/4SE1/4  
NEAREST PROPERTY LINE: 65' E

**BOTTOM HOLE**

LAT: 40.49642°N  
LONG: 104.35785°W



**SHEET 1 OF 2**

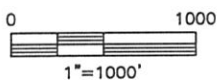
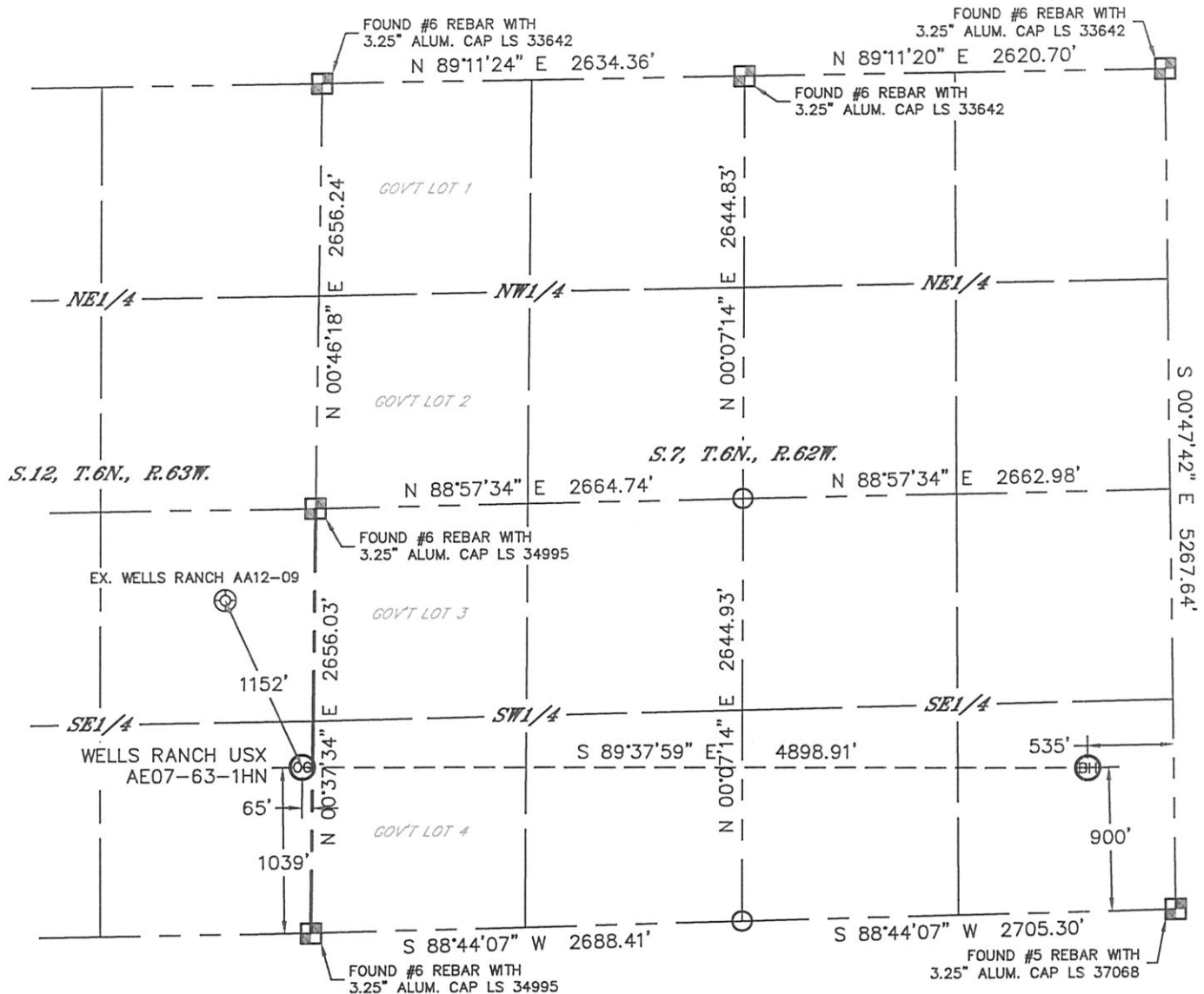
Brian T. Brinkman-On Behalf of Lat40°, Inc.  
Colorado Licensed Professional Land Surveyor No. 38175  
DATE: 8/03/2012  
PROJECT#: 2012094

Lat40°, Inc. 1635 Foxtrail Drive, Suite 325 Loveland, CO 970-776-3321

# WELL LOCATION CERTIFICATE

THIS MAP DOES NOT REPRESENT A BOUNDARY SURVEY



SECTION: 12  
TOWNSHIP: 6N  
RANGE: 63W

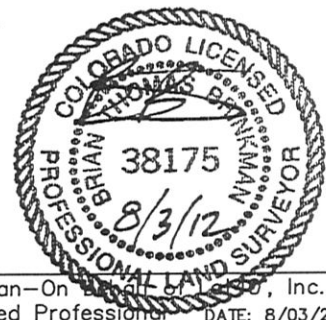


## NOTE

According to Colorado law, you must commence any legal action based upon any defect in this W.L.C. within three years after you discover such defect. In no event, may any action based upon any defect in this survey be commenced more than ten years after the date of the certificate shown hereon. (13-80-105 C.R.S.)

## LEGEND

-  = ALIQUOT MONUMENT AS DESCRIBED
-  = CALCULATED POSITION

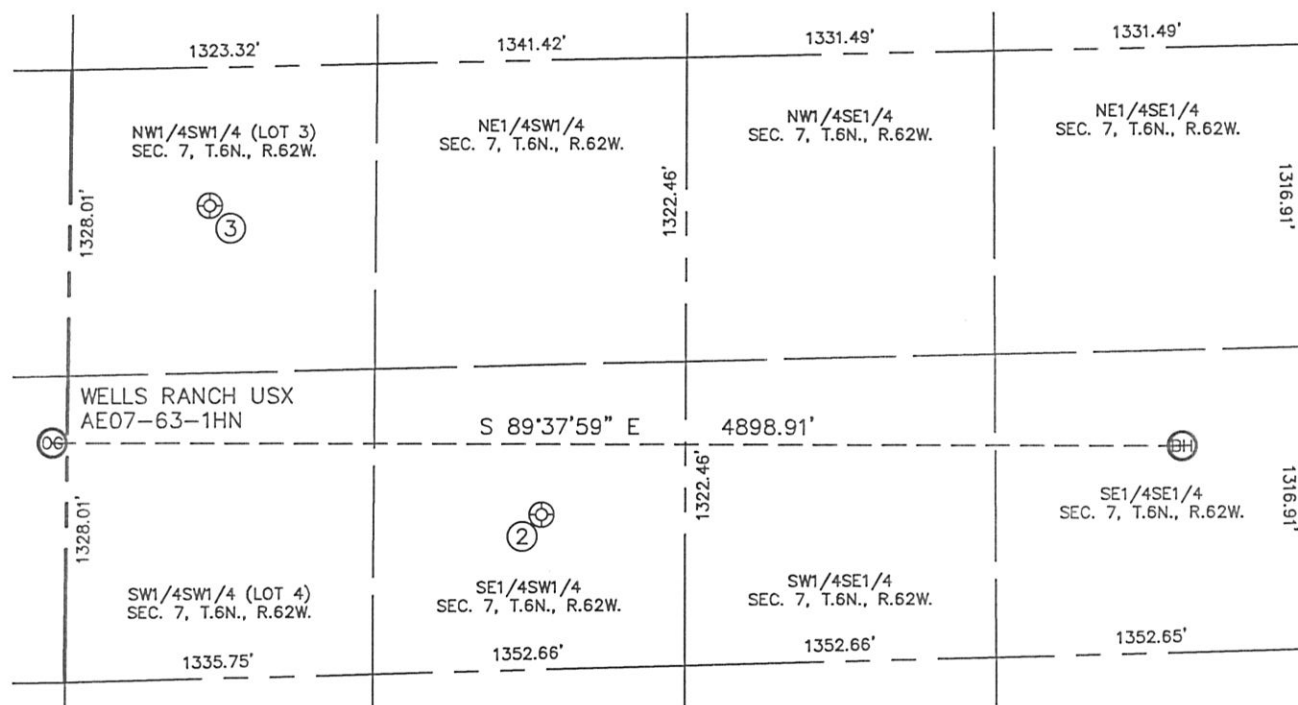


## SHEET 2 OF 2

Brian T. Brinkman-On Behalf of Lat40°, Inc.  
Colorado Licensed Professional Land Surveyor No. 38175  
DATE: 8/03/2012  
PROJECT#: 2012094

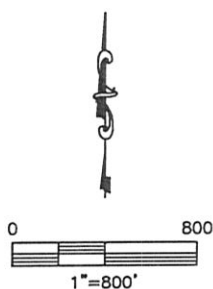
SITE SKETCH  
WELLS RANCH USX AE07-63-1HN

SECTION: 12  
TOWNSHIP: 6N  
RANGE: 63W



② WELLS RANCH USX AE7-14  
SE1/4SW1/4  
673' FSL  
2059' FWL  
LAT-40.49573°N  
LONG-104.36784°W  
PDOP: 1.5  
ELEV: 4904'

③ WELLS RANCH USX AE7-12  
NW1/4SW1/4 (LOT 3)  
2051' FSL  
603' FWL  
LAT-40.49947°N  
LONG-104.37297°W  
PDOP: 1.3  
ELEV: 4872'



DATE: 8/03/2012  
PROJECT#: 2012094