

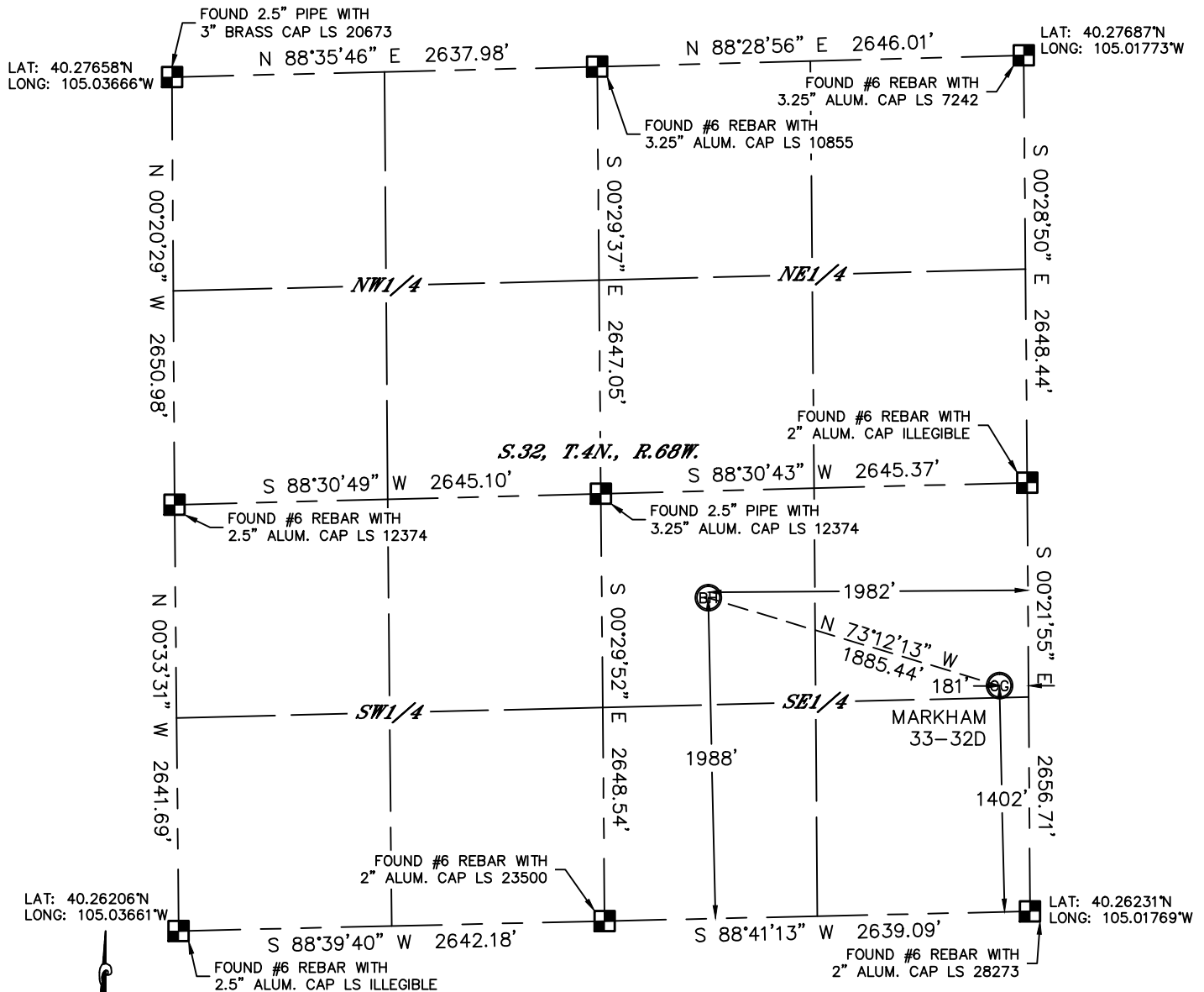


Lat40°, Inc. 1635 Foxtrail Drive, Suite 325 Loveland, CO 970-776-3321

WELL LOCATION CERTIFICATE

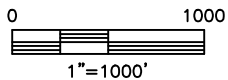
THIS MAP DOES NOT REPRESENT A BOUNDARY SURVEY

SECTION: 32
TOWNSHIP: 4N
RANGE: 68W



In accordance with a request from Jesse White with APOLLO OPERATING, LLC, Lat40°, Inc. has determined the surface location of the MARKHAM 33-32D to be 1402' from the SOUTH line and 181' from the EAST line and the bottom hole to be 1988' from the SOUTH line and 1982' from the EAST line as measured at right angles from the section lines of Section 32, Township 4 North, Range 68 West of the Sixth Principal Meridian, County of Weld, State of Colorado.

I hereby state that this Well Location Certificate was prepared by me, or under my direct supervision, that the fieldwork was completed on 2/13/2013, for and on behalf of APOLLO OPERATING, LLC. That this is not a Land Survey Plat or an Improvement Survey Plat, and that it is not to be relied upon for establishment of fence, building, or other future improvement lines.



NOTE:

- 1) Bearings shown are Grid Bearings of the Colorado State Plane Coordinate System, North Zone, North American Datum 1983/2007. The lineal dimensions as contained herein are based upon the "U.S. Survey Foot."
- 2) Ground elevations are based on an observed GPS elevation (NAVD 1988 DATUM).
- 3) IMPROVEMENTS: See LOCATION DRAWING for all visible improvements within 400' of disturbed area.
- 4) SURFACE USE: CROPLAND
- 5) INSTRUMENT OPERATOR: ADAM KELLY

SURFACE LOCATION

LAT: 40.26615°N
LONG: 105.01834°W
PDOP: 2.0
ELEV: 5061'
1/4, 1/4: NE1/4SE1/4
NEAREST PROPERTY LINE: 181' EAST

BOTTOM HOLE

LATITUDE: 40.26767°N
LONGITUDE: 105.02480°W

NOTE

According to Colorado law, you must commence any legal action based upon any defect in this W.L.C. within three years after you discover such defect. In no event, may any action based upon any defect in this survey be commenced more than ten years after the date of the certificate shown hereon. (13-80-105 C.R.S.)

LEGEND

- = ALIQUOT MONUMENT AS DESCRIBED
- = CALCULATED POSITION

Brian T. Brinkman—On behalf of Lat40°, Inc.
Colorado Licensed Professional Land Surveyor No. 38175
DATE: 2/19/2013
PROJECT#: 2011099

