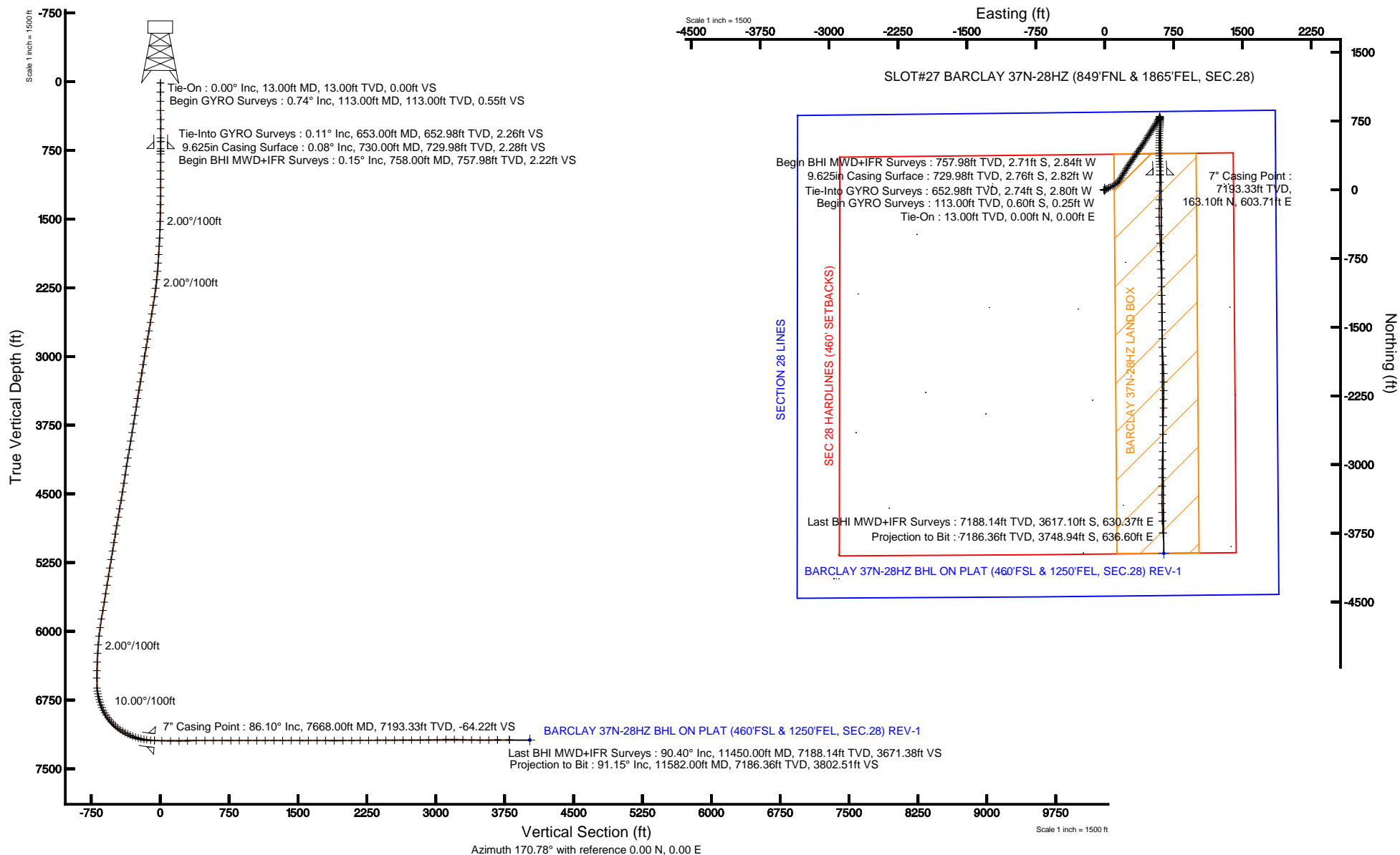


Location:	COLORADO	Slot:	SLOT#27 BARCLAY 37N-28HZ (849'FNL & 1865'FEL, SEC.28)
Field:	WELD COUNTY (KERR MCGEE)	Well:	BARCLAY 37N-28HZ
Facility:	SEC.28-T3N-R66W	Wellbore:	BARCLAY 37N-28HZ PWB

True vertical depths are referenced to ENSIGN 145 (RT)	Grid System: NAD83 / Lambert Colorado SP, Northern Zone (501), US feet
Measured depths are referenced to ENSIGN 145 (RT)	North Reference: True north
ENSIGN 145 (RT) to Mean Sea Level: 4979 feet	Scale: True distance
Mean Sea Level to Mud line (At Slot: SLOT#27 BARCLAY 37N-28HZ (849FNL & 1865FEL, SEC.28)): 0 feet	Depths are in feet
Coordinates are in feet referenced to Slot	Created by: wilsje02 on 1/25/2013





Actual Wellpath Report

BARCLAY 37N-28HZ AWP

Page 1 of 7



REFERENCE WELLPATH IDENTIFICATION

Operator	KERR-MCGEE OIL & GAS ONSHORE LP	Slot	SLOT#27 BARCLAY 37N-28HZ (849'FNL & 1865'FEL, SEC.28)
Area	COLORADO	Well	BARCLAY 37N-28HZ
Field	WELD COUNTY (KERR MCGEE)	Wellbore	BARCLAY 37N-28HZ AWB
Facility	SEC.28-T3N-R66W		

REPORT SETUP INFORMATION

Projection System	NAD83 / Lambert Colorado SP, Northern Zone (501), US feet	Software System	WellArchitect® 3.0.2
North Reference	True	User	Wilsjef02
Scale	0.999957	Report Generated	1/25/2013 at 09:50:12
Convergence at slot	0.47° East	Database/Source file	WellArchitectDB/BARCLAY_37N-28HZ_AWB.xml

WELLPATH LOCATION

	Local coordinates		Grid coordinates		Geographic coordinates	
	North[ft]	East[ft]	Easting[US ft]	Northing[US ft]	Latitude	Longitude
Slot Location	4247.90	2951.62	3201221.34	1316853.54	40°12'03.298"N	104°46'46.618"W
Facility Reference Pt			3198303.94	1312582.33	40°11'21.322"N	104°47'24.657"W
Field Reference Pt			3197771.84	1268891.29	40°04'09.600"N	104°47'36.000"W

WELLPATH DATUM

Calculation method	Minimum curvature	ENSIGN 145 (RT) to Facility Vertical Datum	4979.00ft
Horizontal Reference Pt	Slot	ENSIGN 145 (RT) to Mean Sea Level	4979.00ft
Vertical Reference Pt	ENSIGN 145 (RT)	ENSIGN 145 (RT) to Mud Line at Slot (SLOT#27 BARCLAY 37N-28HZ (849'FNL & 1865'FEL, SEC.28))	4979.00ft
MD Reference Pt	ENSIGN 145 (RT)	Section Origin	N 0.00, E 0.00 ft
Field Vertical Reference	Mean Sea Level	Section Azimuth	170.36°



Actual Wellpath Report

BARCLAY 37N-28HZ AWP

Page 2 of 7



REFERENCE WELLPATH IDENTIFICATION

Operator	KERR-MCGEE OIL & GAS ONSHORE LP	Slot	SLOT#27 BARCLAY 37N-28HZ (849'FNL & 1865'FEL, SEC.28)
Area	COLORADO	Well	BARCLAY 37N-28HZ
Field	WELD COUNTY (KERR MCGEE)	Wellbore	BARCLAY 37N-28HZ AWB
Facility	SEC.28-T3N-R66W		

WELLPATH DATA (144 stations) † = interpolated/extrapolated station

MD [ft]	Inclination [°]	Azimuth [°]	TVD [ft]	Vert Sect [ft]	North [ft]	East [ft]	Latitude	Longitude	DLS [°/100ft]	Comments
0.00†	0.000	202.590	0.00	0.00	0.00	0.00	40°12'03.298"N	104°46'46.618"W	0.00	
13.00	0.000	202.590	13.00	0.00	0.00	0.00	40°12'03.298"N	104°46'46.618"W	0.00	Tie-On
113.00	0.740	202.590	113.00	0.55	-0.60	-0.25	40°12'03.292"N	104°46'46.621"W	0.74	Begin GYRO Surveys
213.00	0.220	218.300	212.99	1.22	-1.34	-0.62	40°12'03.285"N	104°46'46.626"W	0.53	
313.00	0.550	207.980	312.99	1.73	-1.92	-0.96	40°12'03.279"N	104°46'46.630"W	0.34	
413.00	0.420	248.450	412.99	2.19	-2.48	-1.53	40°12'03.274"N	104°46'46.638"W	0.36	
513.00	0.320	262.860	512.99	2.25	-2.65	-2.14	40°12'03.272"N	104°46'46.646"W	0.14	
613.00	0.320	266.680	612.98	2.21	-2.70	-2.70	40°12'03.271"N	104°46'46.653"W	0.02	
653.00	0.110	169.630	652.98	2.23	-2.74	-2.80	40°12'03.271"N	104°46'46.654"W	0.88	Tie-Into GYRO Surveys
758.00	0.150	337.440	757.98	2.20	-2.71	-2.84	40°12'03.271"N	104°46'46.655"W	0.25	Begin BHI MWD+IFR Surveys
788.00	0.090	270.150	787.98	2.16	-2.68	-2.88	40°12'03.272"N	104°46'46.655"W	0.47	
880.00	0.420	312.290	879.98	1.88	-2.45	-3.20	40°12'03.274"N	104°46'46.659"W	0.39	
973.00	0.800	327.160	972.98	1.01	-1.67	-3.80	40°12'03.281"N	104°46'46.667"W	0.44	
1065.00	0.150	291.240	1064.97	0.36	-1.09	-4.26	40°12'03.287"N	104°46'46.673"W	0.74	
1157.00	0.040	257.120	1156.97	0.30	-1.05	-4.41	40°12'03.288"N	104°46'46.675"W	0.13	
1249.00	1.120	52.550	1248.97	-0.12	-0.52	-3.72	40°12'03.293"N	104°46'46.666"W	1.26	
1341.00	2.330	64.980	1340.92	-1.03	0.82	-1.32	40°12'03.306"N	104°46'46.635"W	1.37	
1432.00	3.820	67.850	1431.79	-2.18	2.75	3.17	40°12'03.325"N	104°46'46.577"W	1.65	
1525.00	5.710	75.540	1524.47	-3.24	5.07	10.52	40°12'03.348"N	104°46'46.482"W	2.14	
1616.00	7.220	65.630	1614.89	-5.07	8.56	20.11	40°12'03.383"N	104°46'46.359"W	2.06	
1708.00	9.180	63.380	1705.94	-8.69	14.24	31.94	40°12'03.439"N	104°46'46.206"W	2.16	
1800.00	10.870	64.330	1796.54	-13.23	21.28	46.32	40°12'03.508"N	104°46'46.021"W	1.85	
1892.00	12.930	64.420	1886.55	-18.45	29.49	63.42	40°12'03.589"N	104°46'45.801"W	2.24	
1987.00	13.400	63.860	1979.06	-24.50	38.92	82.89	40°12'03.683"N	104°46'45.550"W	0.51	
2081.00	13.290	54.710	2070.53	-32.27	49.97	101.49	40°12'03.792"N	104°46'45.310"W	2.25	
2176.00	12.940	53.690	2163.05	-41.77	62.57	118.98	40°12'03.916"N	104°46'45.085"W	0.44	
2271.00	12.390	48.160	2255.74	-51.98	75.67	135.14	40°12'04.046"N	104°46'44.876"W	1.40	
2366.00	12.300	42.210	2348.55	-63.66	89.96	149.53	40°12'04.187"N	104°46'44.691"W	1.34	
2461.00	12.180	35.600	2441.39	-76.97	105.61	162.17	40°12'04.342"N	104°46'44.528"W	1.48	
2556.00	12.070	30.070	2534.28	-91.67	122.35	172.98	40°12'04.507"N	104°46'44.389"W	1.23	
2651.00	12.360	31.000	2627.13	-107.03	139.67	183.19	40°12'04.678"N	104°46'44.257"W	0.37	
2746.00	13.070	30.730	2719.80	-122.93	157.61	193.92	40°12'04.856"N	104°46'44.119"W	0.75	
2840.00	13.300	31.060	2811.32	-139.22	176.01	204.93	40°12'05.037"N	104°46'43.977"W	0.26	
2935.00	13.330	29.240	2903.77	-156.03	194.93	215.91	40°12'05.224"N	104°46'43.835"W	0.44	
3030.00	12.720	33.080	2996.32	-172.24	213.25	226.97	40°12'05.405"N	104°46'43.693"W	1.11	
3125.00	11.920	32.280	3089.13	-187.23	230.31	237.92	40°12'05.574"N	104°46'43.552"W	0.86	
3220.00	11.800	31.680	3182.11	-201.82	246.87	248.26	40°12'05.738"N	104°46'43.418"W	0.18	
3315.00	12.510	29.910	3274.98	-217.05	264.05	258.49	40°12'05.907"N	104°46'43.287"W	0.84	
3410.00	12.400	32.880	3367.74	-232.50	281.54	269.16	40°12'06.080"N	104°46'43.149"W	0.68	
3504.00	12.150	35.160	3459.59	-246.96	298.10	280.34	40°12'06.244"N	104°46'43.005"W	0.58	
3599.00	12.450	37.160	3552.41	-261.07	314.44	292.28	40°12'06.405"N	104°46'42.851"W	0.55	
3694.00	12.990	34.400	3645.08	-275.75	331.41	304.50	40°12'06.573"N	104°46'42.694"W	0.86	
3789.00	12.590	33.410	3737.72	-291.00	348.86	316.23	40°12'06.745"N	104°46'42.543"W	0.48	
3884.00	12.630	33.890	3830.43	-306.09	366.13	327.72	40°12'06.916"N	104°46'42.394"W	0.12	
3979.00	12.610	33.440	3923.14	-321.20	383.40	339.23	40°12'07.087"N	104°46'42.246"W	0.11	



Actual Wellpath Report

BARCLAY 37N-28HZ AWP

Page 3 of 7



REFERENCE WELLPATH IDENTIFICATION

Operator	KERR-MCGEE OIL & GAS ONSHORE LP	Slot	SLOT#27 BARCLAY 37N-28HZ (849'FNL & 1865'FEL, SEC.28)
Area	COLORADO	Well	BARCLAY 37N-28HZ
Field	WELD COUNTY (KERR MCGEE)	Wellbore	BARCLAY 37N-28HZ AWB
Facility	SEC.28-T3N-R66W		

WELLPATH DATA (144 stations)

MD [ft]	Inclination [°]	Azimuth [°]	TVD [ft]	Vert Sect [ft]	North [ft]	East [ft]	Latitude	Longitude	DLS [°/100ft]	Comments
4074.00	13.130	34.100	4015.75	-336.57	400.99	350.99	40°12'07.261"N	104°46'42.095"W	0.57	
4169.00	13.250	34.420	4108.25	-352.19	418.90	363.20	40°12'07.438"N	104°46'41.937"W	0.15	
4263.00	12.360	34.920	4199.91	-367.10	436.04	375.05	40°12'07.607"N	104°46'41.785"W	0.95	
4358.00	11.490	37.380	4292.86	-380.80	451.90	386.61	40°12'07.764"N	104°46'41.635"W	1.06	
4453.00	11.870	37.280	4385.89	-393.92	467.19	398.27	40°12'07.915"N	104°46'41.485"W	0.40	
4548.00	12.030	33.080	4478.83	-407.87	483.26	409.59	40°12'08.074"N	104°46'41.339"W	0.93	
4643.00	13.520	31.670	4571.48	-423.48	501.01	420.83	40°12'08.249"N	104°46'41.194"W	1.60	
4738.00	12.810	32.290	4663.98	-439.66	519.36	432.29	40°12'08.430"N	104°46'41.047"W	0.76	
4832.00	13.280	31.250	4755.55	-455.58	537.40	443.45	40°12'08.609"N	104°46'40.903"W	0.56	
4927.00	13.020	31.220	4848.06	-471.92	555.88	454.66	40°12'08.791"N	104°46'40.758"W	0.27	
5022.00	12.300	32.280	4940.75	-487.54	573.59	465.61	40°12'08.966"N	104°46'40.617"W	0.80	
5117.00	12.410	34.070	5033.55	-502.45	590.60	476.73	40°12'09.134"N	104°46'40.474"W	0.42	
5212.00	12.720	31.720	5126.28	-517.68	607.95	487.95	40°12'09.306"N	104°46'40.329"W	0.63	
5307.00	12.230	31.020	5219.04	-533.16	625.47	498.64	40°12'09.479"N	104°46'40.192"W	0.54	
5401.00	11.300	32.360	5311.06	-547.56	641.78	508.70	40°12'09.640"N	104°46'40.062"W	1.03	
5496.00	11.670	31.470	5404.16	-561.72	657.84	518.69	40°12'09.799"N	104°46'39.933"W	0.43	
5591.00	11.610	31.900	5497.20	-576.11	674.15	528.76	40°12'09.960"N	104°46'39.803"W	0.11	
5686.00	12.360	32.380	5590.13	-590.82	690.85	539.26	40°12'10.125"N	104°46'39.668"W	0.80	
5781.00	12.870	32.610	5682.84	-606.21	708.35	550.41	40°12'10.298"N	104°46'39.524"W	0.54	
5875.00	13.050	31.260	5774.44	-621.98	726.24	561.55	40°12'10.475"N	104°46'39.381"W	0.37	
5970.00	12.160	29.770	5867.15	-637.82	744.10	572.09	40°12'10.651"N	104°46'39.245"W	1.00	
6065.00	9.860	29.500	5960.40	-651.86	759.86	581.06	40°12'10.807"N	104°46'39.129"W	2.42	
6160.00	7.980	28.730	6054.25	-663.34	772.72	588.24	40°12'10.934"N	104°46'39.037"W	1.98	
6255.00	6.330	32.230	6148.50	-672.41	782.94	594.20	40°12'11.035"N	104°46'38.960"W	1.80	
6349.00	4.650	20.760	6242.07	-679.56	790.89	598.32	40°12'11.113"N	104°46'38.907"W	2.13	
6444.00	2.170	25.500	6336.90	-684.35	796.11	600.46	40°12'11.165"N	104°46'38.879"W	2.63	
6539.00	1.330	358.990	6431.85	-686.91	798.84	601.21	40°12'11.192"N	104°46'38.870"W	1.21	
6619.00	1.160	6.280	6511.83	-688.61	800.57	601.28	40°12'11.209"N	104°46'38.869"W	0.29	
6729.00	4.650	161.650	6621.73	-685.27	797.44	602.81	40°12'11.178"N	104°46'38.849"W	5.20	
6761.00	8.810	167.250	6653.51	-681.54	793.82	603.76	40°12'11.142"N	104°46'38.837"W	13.15	
6792.00	12.280	172.190	6683.98	-675.87	788.24	604.73	40°12'11.087"N	104°46'38.824"W	11.56	
6824.00	15.140	175.410	6715.06	-668.31	780.70	605.53	40°12'11.013"N	104°46'38.814"W	9.25	
6856.00	16.500	179.030	6745.85	-659.65	771.99	605.94	40°12'10.927"N	104°46'38.809"W	5.25	
6887.00	17.530	182.490	6775.49	-650.73	762.92	605.81	40°12'10.837"N	104°46'38.810"W	4.66	
6919.00	19.950	183.740	6805.80	-640.71	752.66	605.25	40°12'10.736"N	104°46'38.818"W	7.67	
6950.00	23.510	181.120	6834.59	-629.49	741.19	604.78	40°12'10.622"N	104°46'38.824"W	11.90	
6982.00	27.370	181.030	6863.48	-615.98	727.45	604.52	40°12'10.487"N	104°46'38.827"W	12.06	
7014.00	30.100	182.390	6891.54	-600.90	712.08	604.06	40°12'10.335"N	104°46'38.833"W	8.77	
7045.00	33.750	184.560	6917.85	-584.94	695.72	603.05	40°12'10.173"N	104°46'38.846"W	12.34	
7077.00	37.270	182.690	6943.89	-566.86	677.17	601.88	40°12'09.990"N	104°46'38.861"W	11.51	
7108.00	40.140	183.820	6968.08	-547.96	657.82	600.78	40°12'09.799"N	104°46'38.875"W	9.53	
7140.00	42.580	184.100	6992.10	-527.41	636.73	599.32	40°12'09.590"N	104°46'38.894"W	7.65	
7172.00	45.660	182.170	7015.07	-505.69	614.49	598.11	40°12'09.370"N	104°46'38.910"W	10.50	
7203.00	49.380	181.350	7036.00	-483.28	591.64	597.41	40°12'09.145"N	104°46'38.919"W	12.16	
7235.00	53.310	181.700	7055.98	-458.77	566.67	596.75	40°12'08.898"N	104°46'38.927"W	12.31	

REFERENCE WELLPATH IDENTIFICATION

Operator	KERR-MCGEE OIL & GAS ONSHORE LP	Slot	SLOT#27 BARCLAY 37N-28HZ (849'FNL & 1865'FEL, SEC.28)
Area	COLORADO	Well	BARCLAY 37N-28HZ
Field	WELD COUNTY (KERR MCGEE)	Wellbore	BARCLAY 37N-28HZ AWB
Facility	SEC.28-T3N-R66W		

WELLPATH DATA (144 stations) † = interpolated/extrapolated station

MD [ft]	Inclination [°]	Azimuth [°]	TVD [ft]	Vert Sect [ft]	North [ft]	East [ft]	Latitude	Longitude	DLS [°/100ft]	Comments
7267.00	56.730	181.540	7074.33	-433.06	540.46	596.00	40°12'08.639"N	104°46'38.937"W	10.70	
7298.00	59.260	182.080	7090.75	-407.30	514.19	595.17	40°12'08.379"N	104°46'38.948"W	8.29	
7330.00	61.220	180.860	7106.64	-380.04	486.42	594.46	40°12'08.105"N	104°46'38.957"W	6.96	
7361.00	64.280	179.650	7120.83	-352.89	458.87	594.34	40°12'07.832"N	104°46'38.958"W	10.46	
7393.00	66.300	178.780	7134.21	-324.17	429.80	594.74	40°12'07.545"N	104°46'38.953"W	6.78	
7424.00	68.890	178.430	7146.02	-295.81	401.15	595.44	40°12'07.262"N	104°46'38.944"W	8.42	
7456.00	71.550	177.880	7156.85	-265.98	371.06	596.41	40°12'06.965"N	104°46'38.932"W	8.47	
7488.00	73.660	177.780	7166.42	-235.70	340.55	597.57	40°12'06.663"N	104°46'38.917"W	6.60	
7519.00	76.740	177.840	7174.33	-205.99	310.60	598.71	40°12'06.367"N	104°46'38.902"W	9.94	
7551.00	79.910	177.510	7180.81	-174.91	279.29	599.99	40°12'06.058"N	104°46'38.886"W	9.96	
7582.00	82.780	176.450	7185.47	-144.47	248.69	601.60	40°12'05.755"N	104°46'38.865"W	9.86	
7625.00	85.080	178.960	7190.02	-102.06	205.97	603.31	40°12'05.333"N	104°46'38.843"W	7.89	
7668.00†	86.097	179.974	7193.33	-59.73	163.10	603.71	40°12'04.910"N	104°46'38.838"W	3.33	7" Casing Point
7750.00	88.040	181.900	7197.52	20.76	81.23	602.37	40°12'04.101"N	104°46'38.855"W	3.33	
7846.00	88.970	181.390	7200.03	114.87	-14.70	599.62	40°12'03.153"N	104°46'38.890"W	1.10	
7940.00	90.120	181.260	7200.77	207.15	-108.67	597.44	40°12'02.224"N	104°46'38.918"W	1.23	
8035.00	92.120	180.790	7198.92	300.49	-203.63	595.74	40°12'01.286"N	104°46'38.940"W	2.16	
8130.00	91.460	180.050	7195.95	393.98	-298.58	595.05	40°12'00.347"N	104°46'38.949"W	1.04	
8225.00	90.520	177.730	7194.31	487.91	-393.54	596.89	40°11'59.409"N	104°46'38.926"W	2.63	
8320.00	89.380	176.870	7194.39	582.21	-488.43	601.36	40°11'58.471"N	104°46'38.868"W	1.50	
8414.00	88.980	177.370	7195.74	675.55	-582.30	606.09	40°11'57.544"N	104°46'38.807"W	0.68	
8509.00	90.860	178.020	7195.87	769.77	-677.22	609.91	40°11'56.606"N	104°46'38.758"W	2.09	
8604.00	90.400	178.260	7194.82	863.89	-772.16	612.99	40°11'55.667"N	104°46'38.718"W	0.55	
8699.00	88.980	178.160	7195.34	957.99	-867.11	615.96	40°11'54.729"N	104°46'38.680"W	1.50	
8794.00	90.400	178.370	7195.85	1052.09	-962.07	618.83	40°11'53.791"N	104°46'38.643"W	1.51	
8889.00	90.400	179.310	7195.19	1146.05	-1057.04	620.76	40°11'52.852"N	104°46'38.618"W	0.99	
8984.00	89.340	179.710	7195.40	1239.84	-1152.04	621.57	40°11'51.914"N	104°46'38.608"W	1.19	
9079.00	90.270	178.670	7195.73	1333.71	-1247.03	622.91	40°11'50.975"N	104°46'38.591"W	1.47	
9173.00	90.030	178.960	7195.48	1426.69	-1341.01	624.86	40°11'50.046"N	104°46'38.566"W	0.40	
9268.00	89.470	179.260	7195.90	1520.58	-1435.99	626.33	40°11'49.107"N	104°46'38.547"W	0.67	
9363.00	90.740	179.910	7195.72	1614.35	-1530.99	627.02	40°11'48.169"N	104°46'38.538"W	1.50	
9458.00	89.500	178.850	7195.52	1708.17	-1625.98	628.05	40°11'47.230"N	104°46'38.525"W	1.72	
9553.00	89.930	177.410	7195.99	1802.30	-1720.92	631.15	40°11'46.292"N	104°46'38.485"W	1.58	
9648.00	89.720	176.840	7196.28	1896.64	-1815.80	635.91	40°11'45.354"N	104°46'38.423"W	0.64	
9743.00	90.610	177.260	7196.01	1990.99	-1910.68	640.80	40°11'44.417"N	104°46'38.360"W	1.04	
9838.00	91.170	178.600	7194.54	2085.15	-2005.60	644.23	40°11'43.479"N	104°46'38.316"W	1.53	
9932.00	90.550	180.500	7193.12	2177.93	-2099.58	644.97	40°11'42.550"N	104°46'38.307"W	2.13	
10027.00	90.550	180.300	7192.21	2271.47	-2194.57	644.31	40°11'41.611"N	104°46'38.315"W	0.21	
10122.00	89.900	180.190	7191.84	2365.06	-2289.57	643.90	40°11'40.672"N	104°46'38.321"W	0.69	
10217.00	90.090	181.190	7191.85	2458.52	-2384.56	642.76	40°11'39.734"N	104°46'38.335"W	1.07	
10312.00	90.560	181.380	7191.31	2551.79	-2479.54	640.63	40°11'38.795"N	104°46'38.363"W	0.53	
10407.00	90.560	181.080	7190.38	2645.09	-2574.51	638.59	40°11'37.857"N	104°46'38.389"W	0.32	
10501.00	90.400	181.050	7189.59	2737.45	-2668.49	636.84	40°11'36.928"N	104°46'38.412"W	0.17	
10596.00	90.860	181.300	7188.55	2830.75	-2763.47	634.89	40°11'35.989"N	104°46'38.437"W	0.55	
10691.00	90.580	181.840	7187.35	2923.94	-2858.42	632.29	40°11'35.051"N	104°46'38.470"W	0.64	



Actual Wellpath Report

BARCLAY 37N-28HZ AWP

Page 5 of 7



REFERENCE WELLPATH IDENTIFICATION

Operator	KERR-MCGEE OIL & GAS ONSHORE LP	Slot	SLOT#27 BARCLAY 37N-28HZ (849'FNL & 1865'FEL, SEC.28)
Area	COLORADO	Well	BARCLAY 37N-28HZ
Field	WELD COUNTY (KERR MCGEE)	Wellbore	BARCLAY 37N-28HZ AWB
Facility	SEC.28-T3N-R66W		

WELLPATH DATA (144 stations)

MD [ft]	Inclination [°]	Azimuth [°]	TVD [ft]	Vert Sect [ft]	North [ft]	East [ft]	Latitude	Longitude	DLS [°/100ft]	Comments
10786.00	91.830	182.230	7185.36	3016.95	-2953.34	628.92	40°11'34.113"N	104°46'38.514"W	1.38	
10881.00	91.510	179.990	7182.59	3110.24	-3048.28	627.08	40°11'33.175"N	104°46'38.538"W	2.38	
10976.00	88.820	180.310	7182.31	3203.84	-3143.27	626.83	40°11'32.236"N	104°46'38.541"W	2.85	
11070.00	87.960	180.230	7184.96	3296.40	-3237.23	626.39	40°11'31.308"N	104°46'38.547"W	0.92	
11165.00	88.790	180.620	7187.65	3389.90	-3332.19	625.68	40°11'30.369"N	104°46'38.556"W	0.97	
11260.00	89.590	179.460	7188.99	3483.54	-3427.17	625.62	40°11'29.431"N	104°46'38.557"W	1.48	
11355.00	90.520	178.440	7188.90	3577.47	-3522.16	627.36	40°11'28.492"N	104°46'38.534"W	1.45	
11450.00	90.400	177.920	7188.14	3671.59	-3617.10	630.37	40°11'27.554"N	104°46'38.495"W	0.56	Last BHI MWD+IFR Surveys
11582.00	91.146	176.669	7186.36	3802.61	-3748.94	636.60	40°11'26.251"N	104°46'38.415"W	1.10	Projection to Bit

HOLE & CASING SECTIONS - Ref Wellbore: BARCLAY 37N-28HZ AWB Ref Wellpath: BARCLAY 37N-28HZ AWP

String/Diameter	Start MD [ft]	End MD [ft]	Interval [ft]	Start TVD [ft]	End TVD [ft]	Start N/S [ft]	Start E/W [ft]	End N/S [ft]	End E/W [ft]
13.5in Open Hole	13.00	730.00	717.00	13.00	729.98	0.00	0.00	-2.76	-2.82
9.625in Casing Surface	13.00	730.00	717.00	13.00	729.98	0.00	0.00	-2.76	-2.82
8.75in Open Hole	730.00	7678.00	6948.00	729.98	7193.99	-2.76	-2.82	153.13	603.69
7in Casing Intermediate	13.00	7668.00	7655.00	13.00	7193.33	0.00	0.00	163.10	603.71
6.125in Open Hole	7668.00	11582.00	3914.00	7193.33	7186.36	163.10	603.71	-3748.94	636.60

TARGETS

Name	MD [ft]	TVD [ft]	North [ft]	East [ft]	Grid East [US ft]	Grid North [US ft]	Latitude	Longitude	Shape
SECTION 28 LINES		31.70	-4247.55	-2951.97	3198304.10	1312582.33	40°11'21.322"N	104°47'24.655"W	polygon
BARCLAY 37N-28HZ BHL ON PLAT (460'FSL & 1250'FEL, SEC.28) REV-1		7189.00	-3970.85	644.84	3201898.38	1312888.23	40°11'24.058"N	104°46'38.309"W	point
BARCLAY 37N-28HZ LAND BOX		7200.00	0.00	0.00	3201221.34	1316853.54	40°12'03.298"N	104°46'46.618"W	polygon
SEC 28 HARDLINES (460' SETBACKS)		7332.00	-4247.55	-2951.97	3198304.10	1312582.33	40°11'21.322"N	104°47'24.655"W	polygon



Actual Wellpath Report

BARCLAY 37N-28HZ AWP

Page 6 of 7



REFERENCE WELLPATH IDENTIFICATION

Operator	KERR-MCGEE OIL & GAS ONSHORE LP	Slot	SLOT#27 BARCLAY 37N-28HZ (849'FNL & 1865'FEL, SEC.28)
Area	COLORADO	Well	BARCLAY 37N-28HZ
Field	WELD COUNTY (KERR MCGEE)	Wellbore	BARCLAY 37N-28HZ AWB
Facility	SEC.28-T3N-R66W		

WELLPATH COMPOSITION - Ref Wellbore: BARCLAY 37N-28HZ AWB Ref Wellpath: BARCLAY 37N-28HZ AWP

Start MD [ft]	End MD [ft]	Positional Uncertainty Model	Log Name/Comment	Wellbore
13.00	653.00	Generic gyro - continuous (Standard)	GYRODATA SURVEYS <113-653>	BARCLAY 37N-28HZ AWB
653.00	7625.00	NaviTrak (MAGCORR,IFR)	BHI MWD+IFR SURVEYS 8 3/4" HOLE <758-7625>	BARCLAY 37N-28HZ AWB
7625.00	11450.00	OnTrak (MAGCORR,IFR)	BHI MWD+IFR SURVEYS 6 1/8" HOLE <7750-11450>	BARCLAY 37N-28HZ AWB
11450.00	11582.00	Blind Drilling (std)	Projection to bit	BARCLAY 37N-28HZ AWB



Actual Wellpath Report

BARCLAY 37N-28HZ AWP

Page 7 of 7



REFERENCE WELLPATH IDENTIFICATION

Operator	KERR-MCGEE OIL & GAS ONSHORE LP	Slot	SLOT#27 BARCLAY 37N-28HZ (849'FNL & 1865'FEL, SEC.28)
Area	COLORADO	Well	BARCLAY 37N-28HZ
Field	WELD COUNTY (KERR MCGEE)	Wellbore	BARCLAY 37N-28HZ AWB
Facility	SEC.28-T3N-R66W		

WELLPATH COMMENTS

MD [ft]	Inclination [°]	Azimuth [°]	TVD [ft]	Comment
13.00	0.000	202.590	13.00	Tie-On
113.00	0.740	202.590	113.00	Begin GYRO Surveys
653.00	0.110	169.630	652.98	Tie-Into GYRO Surveys
758.00	0.150	337.440	757.98	Begin BHI MWD+IFR Surveys
7668.00	86.097	179.974	7193.33	7" Casing Point
11450.00	90.400	177.920	7188.14	Last BHI MWD+IFR Surveys
11582.00	91.146	176.669	7186.36	Projection to Bit