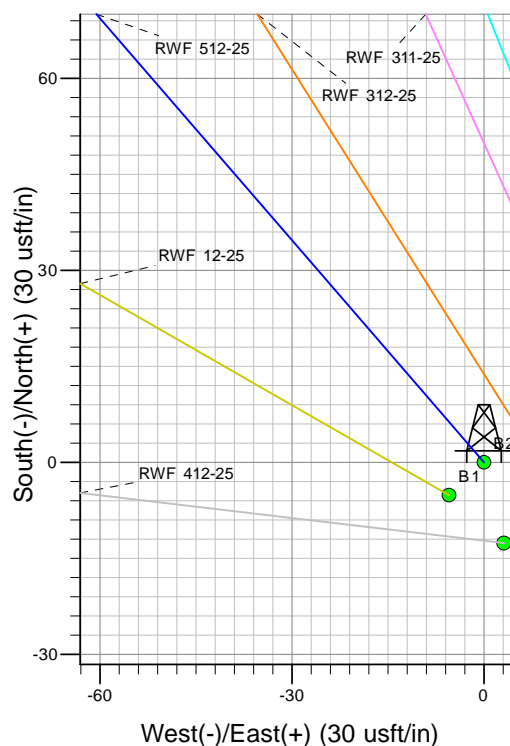
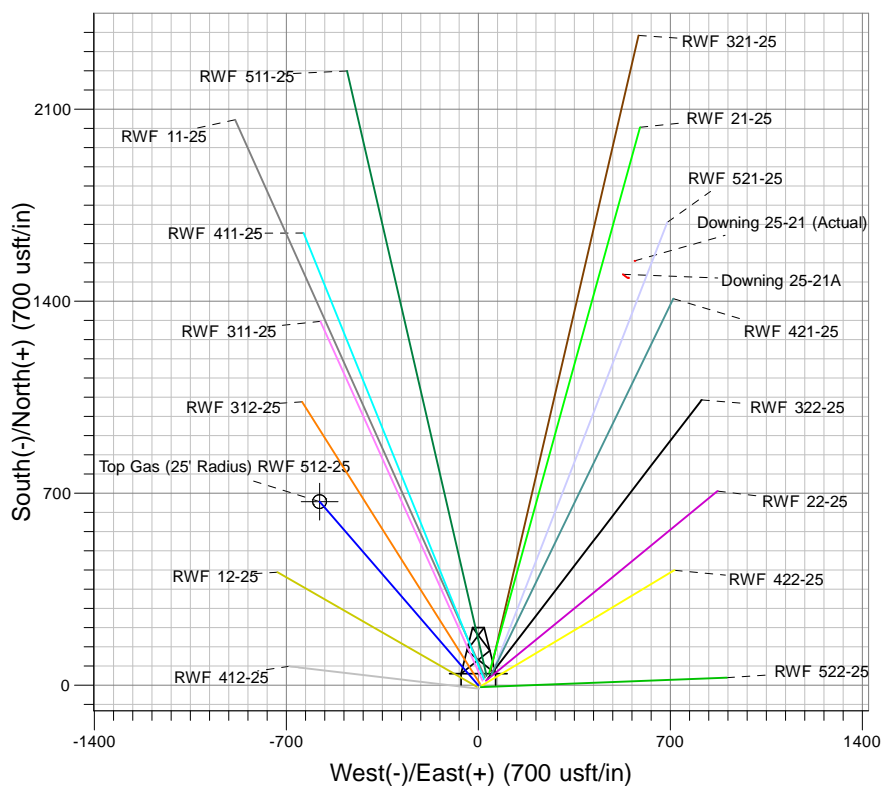
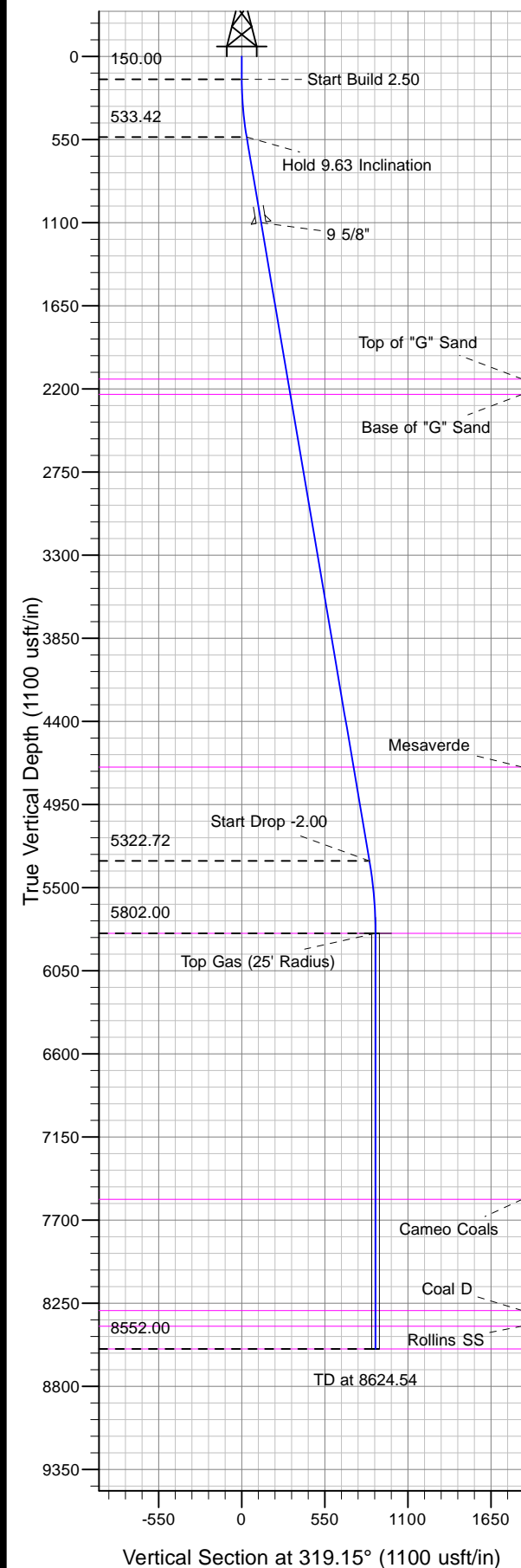




Well Name: RWF 512-25
Surface Location: RWF 22-25 Pad
North American Datum 1983 , US State Plane 1983, Colorado Central Zone
Ground Elevation: 6038.00

+N/-S	+E/-W	Northing	Easting	Latitude	Longitude	Slot
0.00	0.00	1614416.00	2339415.60	39.49698	-107.84113	B2

KELLY BUSHING @ 6064.00usft (Nabors 577)



Project: RU 25-06S-094W
Site: RWF 22-25 Pad
Well: RWF 512-25
Design #2 01Feb13 kjs

Azimuths to True North
Magnetic North: 10.09°
Magnetic Field
Strength: 52121.6snT
Dip Angle: 65.73°
Date: 12/4/2012
Model: IGRF2010

ANNOTATIONS

MD	Inc	Azi	TVD	+N/-S	+E/-W	V/Sect	Departure	Annotation
150.00	0.00	0.00	150.00	0.00	0.00	0.00	0.00	Start Build 2.50
535.23	9.63	319.15	533.42	24.43	-21.13	32.30	32.30	Hold 9.63 Inclination
5393.00	9.63	319.15	5322.72	639.14	-552.75	845.00	845.00	Start Drop -2.00
5874.54	0.00	0.00	5802.00	669.68	-579.16	885.38	885.38	Top Gas
8624.54	0.00	0.00	8552.00	669.68	-579.16	885.38	885.38	TD at 8624.54