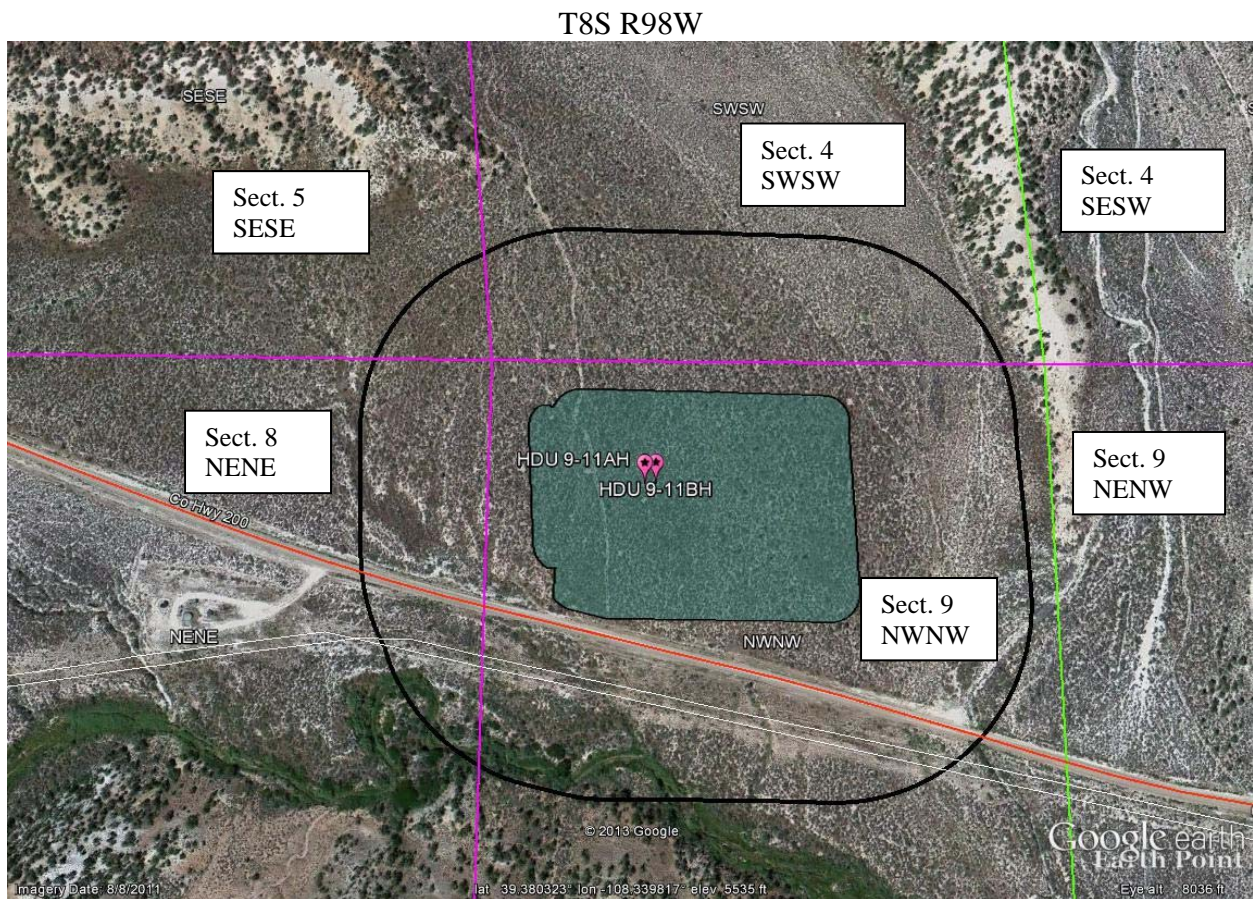


Black Hills Plateau Production
Homer Deep Unit 9-11 well pad (AH and BH wells)
NWNW Sect. 9, T8S R98W
Garfield County

Location Drawing
All measurements from edge of disturbance

14 feet south to buried telephone cable
27 feet south to edge of X.2/CO Hwy 200/Dry Fork Road
142 feet south to buried pipeline
166 feet south to buried pipeline
173 feet south to overhead power line



Google Earth Pro

feet 1000
meters 300

