

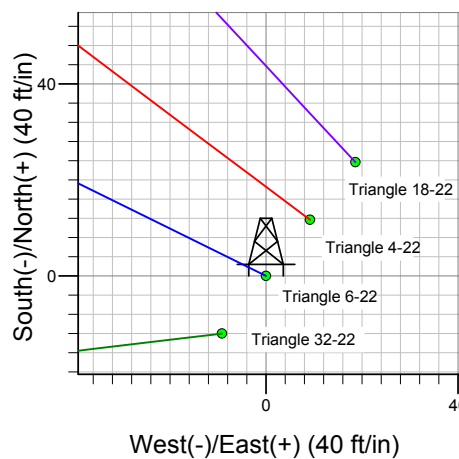
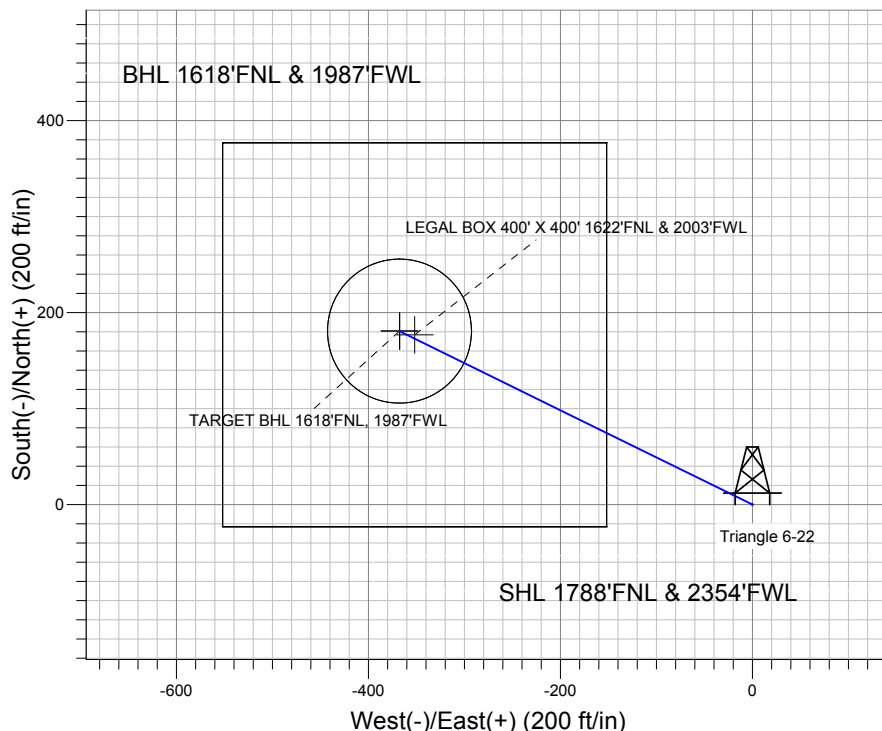
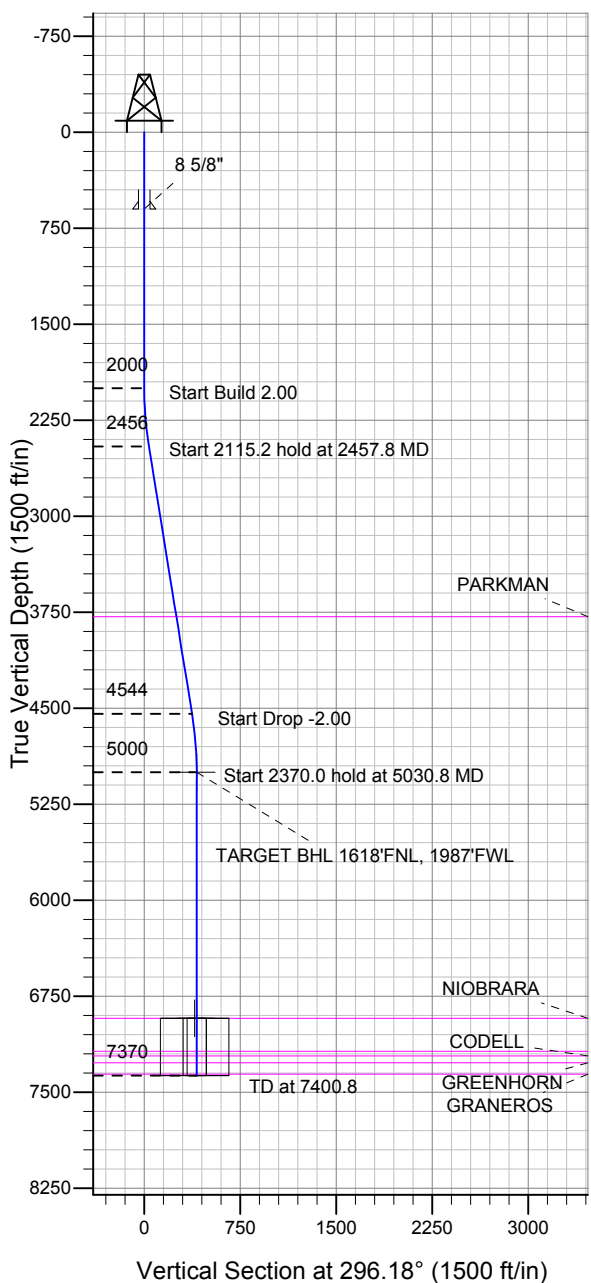
ENSIGN

Directional

Well Name: Triangle 6-22

Surface Location: Triangle 4 Pad Sec.22-T7N-R65W
 North American Datum 1983 US State Plane 1983 Colorado Northern Zone
 Ground Elevation: 4832.0
 +N/-S +E/-W Northing Easting Latitude Longitude Slot
 0.0 0.0 1448652.36 3236056.66 40.561846 -104.650390
 Original Well Elev WELL @ 4848.0ft (Original Well Elev)

BAYSWATER EXPLORATION & PRODUCTION



Triangle 4 Pad Sec.22-T7N-R65W
 Triangle 6-22
 Plan #1 (10-02-12)



Azimuths to True North
 Magnetic North: 8.64°

Magnetic Field
 Strength: 53091.0snT
 Dip Angle: 67.16°
 Date: 10/2/2012
 Model: IGRF2010

WELLBORE TARGET DETAILS (LAT/LONG)

Name	TVD	+N/-S	+E/-W	Latitude	Longitude	Shape
TARGET BHL 1618'FNL, 1987'FWL	5000.0	180.7	-367.6	40.562342	-104.651713	Point
LEGAL BOX 400' X 400' 1622'FNL & 2003'FWL	6923.0	176.7	-351.6	40.562331	-104.651655	Rectangle (Sides: L400.0 W400.0)
TARGET CIRCLE 1618'FNL & 1987'FWL	6923.0	180.7	-367.6	40.562342	-104.651713	Circle (Radius: 75.0)

SECTION DETAILS

Sec	MD	Inc	Azi	TVD	+N/-S	+E/-W	DLeg	TFace	VSec	Target
1	0.0	0.00	0.00	0.0	0.0	0.0	0.00	0.00	0.0	
2	2000.0	0.00	0.00	2000.0	0.0	0.0	0.00	0.00	0.0	
3	2457.8	9.16	296.18	2455.9	16.1	-32.8	2.00	296.18	36.5	
4	4573.0	9.16	296.18	4544.1	164.6	-334.8	0.00	0.00	373.1	
5	5030.8	0.00	0.00	5000.0	180.7	-367.6	2.00	180.00	409.6	TARGET BHL 1618'FNL, 1987'FWL
6	7400.8	0.00	0.00	7370.0	180.7	-367.6	0.00	0.00	409.6	



Directional

BAYSWATER EXPLORATION & PRODUCTION

SEC.22-T7N-R65W

Triangle 4 Pad Sec.22-T7N-R65W

Triangle 6-22

Wellbore #1

Plan: Plan #1 (10-02-12)

Standard Planning Report

02 October, 2012

Plan Sections										
Measured Depth (ft)	Inclination (°)	Azimuth (°)	Vertical Depth (ft)	+N/-S (ft)	+E/-W (ft)	Dogleg Rate (°/100ft)	Build Rate (°/100ft)	Turn Rate (°/100ft)	TFO (°)	Target
0.0	0.00	0.00	0.0	0.0	0.0	0.00	0.00	0.00	0.00	
2,000.0	0.00	0.00	2,000.0	0.0	0.0	0.00	0.00	0.00	0.00	
2,457.8	9.16	296.18	2,455.9	16.1	-32.8	2.00	2.00	0.00	296.18	
4,573.0	9.16	296.18	4,544.1	164.6	-334.8	0.00	0.00	0.00	0.00	
5,030.8	0.00	0.00	5,000.0	180.7	-367.6	2.00	-2.00	0.00	180.00	TARGET BHL 1618
7,400.8	0.00	0.00	7,370.0	180.7	-367.6	0.00	0.00	0.00	0.00	

Database:	Landmark	Local Co-ordinate Reference:	Well Triangle 6-22
Company:	BAYSWATER EXPLORATION & PRODUCTION	TVD Reference:	WELL @ 4848.0ft (Original Well Elev)
Project:	SEC.22-T7N-R65W	MD Reference:	WELL @ 4848.0ft (Original Well Elev)
Site:	Triangle 4 Pad Sec.22-T7N-R65W	North Reference:	True
Well:	Triangle 6-22	Survey Calculation Method:	Minimum Curvature
Wellbore:	Wellbore #1		
Design:	Plan #1 (10-02-12)		

Planned Survey									
Measured Depth (ft)	Inclination (°)	Azimuth (°)	Vertical Depth (ft)	+N/-S (ft)	+E/-W (ft)	Vertical Section (ft)	Dogleg Rate (°/100ft)	Build Rate (°/100ft)	Turn Rate (°/100ft)
0.0	0.00	0.00	0.0	0.0	0.0	0.0	0.00	0.00	0.00
40.0	0.00	0.00	40.0	0.0	0.0	0.0	0.00	0.00	0.00
80.0	0.00	0.00	80.0	0.0	0.0	0.0	0.00	0.00	0.00
120.0	0.00	0.00	120.0	0.0	0.0	0.0	0.00	0.00	0.00
160.0	0.00	0.00	160.0	0.0	0.0	0.0	0.00	0.00	0.00
200.0	0.00	0.00	200.0	0.0	0.0	0.0	0.00	0.00	0.00
240.0	0.00	0.00	240.0	0.0	0.0	0.0	0.00	0.00	0.00
280.0	0.00	0.00	280.0	0.0	0.0	0.0	0.00	0.00	0.00
320.0	0.00	0.00	320.0	0.0	0.0	0.0	0.00	0.00	0.00
360.0	0.00	0.00	360.0	0.0	0.0	0.0	0.00	0.00	0.00
400.0	0.00	0.00	400.0	0.0	0.0	0.0	0.00	0.00	0.00
440.0	0.00	0.00	440.0	0.0	0.0	0.0	0.00	0.00	0.00
480.0	0.00	0.00	480.0	0.0	0.0	0.0	0.00	0.00	0.00
520.0	0.00	0.00	520.0	0.0	0.0	0.0	0.00	0.00	0.00
560.0	0.00	0.00	560.0	0.0	0.0	0.0	0.00	0.00	0.00
600.0	0.00	0.00	600.0	0.0	0.0	0.0	0.00	0.00	0.00
8 5/8"									
640.0	0.00	0.00	640.0	0.0	0.0	0.0	0.00	0.00	0.00
680.0	0.00	0.00	680.0	0.0	0.0	0.0	0.00	0.00	0.00
720.0	0.00	0.00	720.0	0.0	0.0	0.0	0.00	0.00	0.00
760.0	0.00	0.00	760.0	0.0	0.0	0.0	0.00	0.00	0.00
800.0	0.00	0.00	800.0	0.0	0.0	0.0	0.00	0.00	0.00
840.0	0.00	0.00	840.0	0.0	0.0	0.0	0.00	0.00	0.00
880.0	0.00	0.00	880.0	0.0	0.0	0.0	0.00	0.00	0.00
920.0	0.00	0.00	920.0	0.0	0.0	0.0	0.00	0.00	0.00
960.0	0.00	0.00	960.0	0.0	0.0	0.0	0.00	0.00	0.00
1,000.0	0.00	0.00	1,000.0	0.0	0.0	0.0	0.00	0.00	0.00
1,040.0	0.00	0.00	1,040.0	0.0	0.0	0.0	0.00	0.00	0.00
1,080.0	0.00	0.00	1,080.0	0.0	0.0	0.0	0.00	0.00	0.00
1,120.0	0.00	0.00	1,120.0	0.0	0.0	0.0	0.00	0.00	0.00
1,160.0	0.00	0.00	1,160.0	0.0	0.0	0.0	0.00	0.00	0.00
1,200.0	0.00	0.00	1,200.0	0.0	0.0	0.0	0.00	0.00	0.00
1,240.0	0.00	0.00	1,240.0	0.0	0.0	0.0	0.00	0.00	0.00
1,280.0	0.00	0.00	1,280.0	0.0	0.0	0.0	0.00	0.00	0.00
1,320.0	0.00	0.00	1,320.0	0.0	0.0	0.0	0.00	0.00	0.00
1,360.0	0.00	0.00	1,360.0	0.0	0.0	0.0	0.00	0.00	0.00
1,400.0	0.00	0.00	1,400.0	0.0	0.0	0.0	0.00	0.00	0.00
1,440.0	0.00	0.00	1,440.0	0.0	0.0	0.0	0.00	0.00	0.00
1,480.0	0.00	0.00	1,480.0	0.0	0.0	0.0	0.00	0.00	0.00
1,520.0	0.00	0.00	1,520.0	0.0	0.0	0.0	0.00	0.00	0.00
1,560.0	0.00	0.00	1,560.0	0.0	0.0	0.0	0.00	0.00	0.00
1,600.0	0.00	0.00	1,600.0	0.0	0.0	0.0	0.00	0.00	0.00
1,640.0	0.00	0.00	1,640.0	0.0	0.0	0.0	0.00	0.00	0.00
1,680.0	0.00	0.00	1,680.0	0.0	0.0	0.0	0.00	0.00	0.00
1,720.0	0.00	0.00	1,720.0	0.0	0.0	0.0	0.00	0.00	0.00
1,760.0	0.00	0.00	1,760.0	0.0	0.0	0.0	0.00	0.00	0.00
1,800.0	0.00	0.00	1,800.0	0.0	0.0	0.0	0.00	0.00	0.00
1,840.0	0.00	0.00	1,840.0	0.0	0.0	0.0	0.00	0.00	0.00
1,880.0	0.00	0.00	1,880.0	0.0	0.0	0.0	0.00	0.00	0.00
1,920.0	0.00	0.00	1,920.0	0.0	0.0	0.0	0.00	0.00	0.00
1,960.0	0.00	0.00	1,960.0	0.0	0.0	0.0	0.00	0.00	0.00
2,000.0	0.00	0.00	2,000.0	0.0	0.0	0.0	0.00	0.00	0.00
2,040.0	0.80	296.18	2,040.0	0.1	-0.3	0.3	2.00	2.00	0.00

Database:	Landmark	Local Co-ordinate Reference:	Well Triangle 6-22
Company:	BAYSWATER EXPLORATION & PRODUCTION	TVD Reference:	WELL @ 4848.0ft (Original Well Elev)
Project:	SEC.22-T7N-R65W	MD Reference:	WELL @ 4848.0ft (Original Well Elev)
Site:	Triangle 4 Pad Sec.22-T7N-R65W	North Reference:	True
Well:	Triangle 6-22	Survey Calculation Method:	Minimum Curvature
Wellbore:	Wellbore #1		
Design:	Plan #1 (10-02-12)		

Planned Survey									
Measured Depth (ft)	Inclination (°)	Azimuth (°)	Vertical Depth (ft)	+N/-S (ft)	+E/-W (ft)	Vertical Section (ft)	Dogleg Rate (°/100ft)	Build Rate (°/100ft)	Turn Rate (°/100ft)
2,080.0	1.60	296.18	2,080.0	0.5	-1.0	1.1	2.00	2.00	0.00
2,120.0	2.40	296.18	2,120.0	1.1	-2.3	2.5	2.00	2.00	0.00
2,160.0	3.20	296.18	2,159.9	2.0	-4.0	4.5	2.00	2.00	0.00
2,200.0	4.00	296.18	2,199.8	3.1	-6.3	7.0	2.00	2.00	0.00
2,240.0	4.80	296.18	2,239.7	4.4	-9.0	10.0	2.00	2.00	0.00
2,280.0	5.60	296.18	2,279.6	6.0	-12.3	13.7	2.00	2.00	0.00
2,320.0	6.40	296.18	2,319.3	7.9	-16.0	17.9	2.00	2.00	0.00
2,360.0	7.20	296.18	2,359.1	10.0	-20.3	22.6	2.00	2.00	0.00
2,400.0	8.00	296.18	2,398.7	12.3	-25.0	27.9	2.00	2.00	0.00
2,440.0	8.80	296.18	2,438.3	14.9	-30.3	33.7	2.00	2.00	0.00
2,457.8	9.16	296.18	2,455.9	16.1	-32.8	36.5	2.00	2.00	0.00
2,480.0	9.16	296.18	2,477.8	17.7	-35.9	40.0	0.00	0.00	0.00
2,520.0	9.16	296.18	2,517.3	20.5	-41.6	46.4	0.00	0.00	0.00
2,560.0	9.16	296.18	2,556.8	23.3	-47.4	52.8	0.00	0.00	0.00
2,600.0	9.16	296.18	2,596.2	26.1	-53.1	59.1	0.00	0.00	0.00
2,640.0	9.16	296.18	2,635.7	28.9	-58.8	65.5	0.00	0.00	0.00
2,680.0	9.16	296.18	2,675.2	31.7	-64.5	71.9	0.00	0.00	0.00
2,720.0	9.16	296.18	2,714.7	34.5	-70.2	78.2	0.00	0.00	0.00
2,760.0	9.16	296.18	2,754.2	37.3	-75.9	84.6	0.00	0.00	0.00
2,800.0	9.16	296.18	2,793.7	40.1	-81.6	91.0	0.00	0.00	0.00
2,840.0	9.16	296.18	2,833.2	42.9	-87.3	97.3	0.00	0.00	0.00
2,880.0	9.16	296.18	2,872.7	45.7	-93.1	103.7	0.00	0.00	0.00
2,920.0	9.16	296.18	2,912.2	48.6	-98.8	110.1	0.00	0.00	0.00
2,960.0	9.16	296.18	2,951.7	51.4	-104.5	116.4	0.00	0.00	0.00
3,000.0	9.16	296.18	2,991.1	54.2	-110.2	122.8	0.00	0.00	0.00
3,040.0	9.16	296.18	3,030.6	57.0	-115.9	129.2	0.00	0.00	0.00
3,080.0	9.16	296.18	3,070.1	59.8	-121.6	135.5	0.00	0.00	0.00
3,120.0	9.16	296.18	3,109.6	62.6	-127.3	141.9	0.00	0.00	0.00
3,160.0	9.16	296.18	3,149.1	65.4	-133.0	148.2	0.00	0.00	0.00
3,200.0	9.16	296.18	3,188.6	68.2	-138.8	154.6	0.00	0.00	0.00
3,240.0	9.16	296.18	3,228.1	71.0	-144.5	161.0	0.00	0.00	0.00
3,280.0	9.16	296.18	3,267.6	73.8	-150.2	167.3	0.00	0.00	0.00
3,320.0	9.16	296.18	3,307.1	76.6	-155.9	173.7	0.00	0.00	0.00
3,360.0	9.16	296.18	3,346.6	79.4	-161.6	180.1	0.00	0.00	0.00
3,400.0	9.16	296.18	3,386.0	82.3	-167.3	186.4	0.00	0.00	0.00
3,440.0	9.16	296.18	3,425.5	85.1	-173.0	192.8	0.00	0.00	0.00
3,480.0	9.16	296.18	3,465.0	87.9	-178.7	199.2	0.00	0.00	0.00
3,520.0	9.16	296.18	3,504.5	90.7	-184.5	205.5	0.00	0.00	0.00
3,560.0	9.16	296.18	3,544.0	93.5	-190.2	211.9	0.00	0.00	0.00
3,600.0	9.16	296.18	3,583.5	96.3	-195.9	218.3	0.00	0.00	0.00
3,640.0	9.16	296.18	3,623.0	99.1	-201.6	224.6	0.00	0.00	0.00
3,680.0	9.16	296.18	3,662.5	101.9	-207.3	231.0	0.00	0.00	0.00
3,720.0	9.16	296.18	3,702.0	104.7	-213.0	237.4	0.00	0.00	0.00
3,760.0	9.16	296.18	3,741.5	107.5	-218.7	243.7	0.00	0.00	0.00
3,800.0	9.16	296.18	3,780.9	110.3	-224.4	250.1	0.00	0.00	0.00
3,804.1	9.16	296.18	3,785.0	110.6	-225.0	250.7	0.00	0.00	0.00
PARKMAN									
3,840.0	9.16	296.18	3,820.4	113.1	-230.2	256.5	0.00	0.00	0.00
3,880.0	9.16	296.18	3,859.9	116.0	-235.9	262.8	0.00	0.00	0.00
3,920.0	9.16	296.18	3,899.4	118.8	-241.6	269.2	0.00	0.00	0.00
3,960.0	9.16	296.18	3,938.9	121.6	-247.3	275.6	0.00	0.00	0.00
4,000.0	9.16	296.18	3,978.4	124.4	-253.0	281.9	0.00	0.00	0.00
4,040.0	9.16	296.18	4,017.9	127.2	-258.7	288.3	0.00	0.00	0.00

Database:	Landmark	Local Co-ordinate Reference:	Well Triangle 6-22
Company:	BAYSWATER EXPLORATION & PRODUCTION	TVD Reference:	WELL @ 4848.0ft (Original Well Elev)
Project:	SEC.22-T7N-R65W	MD Reference:	WELL @ 4848.0ft (Original Well Elev)
Site:	Triangle 4 Pad Sec.22-T7N-R65W	North Reference:	True
Well:	Triangle 6-22	Survey Calculation Method:	Minimum Curvature
Wellbore:	Wellbore #1		
Design:	Plan #1 (10-02-12)		

Planned Survey									
Measured Depth (ft)	Inclination (°)	Azimuth (°)	Vertical Depth (ft)	+N/-S (ft)	+E/-W (ft)	Vertical Section (ft)	Dogleg Rate (°/100ft)	Build Rate (°/100ft)	Turn Rate (°/100ft)
4,080.0	9.16	296.18	4,057.4	130.0	-264.4	294.7	0.00	0.00	0.00
4,120.0	9.16	296.18	4,096.9	132.8	-270.1	301.0	0.00	0.00	0.00
4,160.0	9.16	296.18	4,136.4	135.6	-275.9	307.4	0.00	0.00	0.00
4,200.0	9.16	296.18	4,175.9	138.4	-281.6	313.8	0.00	0.00	0.00
4,240.0	9.16	296.18	4,215.3	141.2	-287.3	320.1	0.00	0.00	0.00
4,280.0	9.16	296.18	4,254.8	144.0	-293.0	326.5	0.00	0.00	0.00
4,320.0	9.16	296.18	4,294.3	146.8	-298.7	332.8	0.00	0.00	0.00
4,360.0	9.16	296.18	4,333.8	149.7	-304.4	339.2	0.00	0.00	0.00
4,400.0	9.16	296.18	4,373.3	152.5	-310.1	345.6	0.00	0.00	0.00
4,440.0	9.16	296.18	4,412.8	155.3	-315.8	351.9	0.00	0.00	0.00
4,480.0	9.16	296.18	4,452.3	158.1	-321.6	358.3	0.00	0.00	0.00
4,520.0	9.16	296.18	4,491.8	160.9	-327.3	364.7	0.00	0.00	0.00
4,560.0	9.16	296.18	4,531.3	163.7	-333.0	371.0	0.00	0.00	0.00
4,573.0	9.16	296.18	4,544.1	164.6	-334.8	373.1	0.00	0.00	0.00
4,600.0	8.62	296.18	4,570.8	166.4	-338.6	377.3	2.00	-2.00	0.00
4,640.0	7.82	296.18	4,610.4	169.0	-343.7	383.0	2.00	-2.00	0.00
4,680.0	7.02	296.18	4,650.0	171.2	-348.3	388.2	2.00	-2.00	0.00
4,720.0	6.22	296.18	4,689.8	173.3	-352.5	392.8	2.00	-2.00	0.00
4,760.0	5.42	296.18	4,729.6	175.1	-356.1	396.8	2.00	-2.00	0.00
4,800.0	4.62	296.18	4,769.4	176.6	-359.3	400.3	2.00	-2.00	0.00
4,840.0	3.82	296.18	4,809.3	177.9	-361.9	403.3	2.00	-2.00	0.00
4,880.0	3.02	296.18	4,849.2	179.0	-364.0	405.6	2.00	-2.00	0.00
4,920.0	2.22	296.18	4,889.2	179.8	-365.7	407.5	2.00	-2.00	0.00
4,960.0	1.42	296.18	4,929.2	180.3	-366.8	408.7	2.00	-2.00	0.00
5,000.0	0.62	296.18	4,969.2	180.6	-367.4	409.5	2.00	-2.00	0.00
5,030.8	0.00	0.00	5,000.0	180.7	-367.6	409.6	2.00	-2.00	0.00
5,040.0	0.00	0.00	5,009.2	180.7	-367.6	409.6	0.00	0.00	0.00
5,080.0	0.00	0.00	5,049.2	180.7	-367.6	409.6	0.00	0.00	0.00
5,120.0	0.00	0.00	5,089.2	180.7	-367.6	409.6	0.00	0.00	0.00
5,160.0	0.00	0.00	5,129.2	180.7	-367.6	409.6	0.00	0.00	0.00
5,200.0	0.00	0.00	5,169.2	180.7	-367.6	409.6	0.00	0.00	0.00
5,240.0	0.00	0.00	5,209.2	180.7	-367.6	409.6	0.00	0.00	0.00
5,280.0	0.00	0.00	5,249.2	180.7	-367.6	409.6	0.00	0.00	0.00
5,320.0	0.00	0.00	5,289.2	180.7	-367.6	409.6	0.00	0.00	0.00
5,360.0	0.00	0.00	5,329.2	180.7	-367.6	409.6	0.00	0.00	0.00
5,400.0	0.00	0.00	5,369.2	180.7	-367.6	409.6	0.00	0.00	0.00
5,440.0	0.00	0.00	5,409.2	180.7	-367.6	409.6	0.00	0.00	0.00
5,480.0	0.00	0.00	5,449.2	180.7	-367.6	409.6	0.00	0.00	0.00
5,520.0	0.00	0.00	5,489.2	180.7	-367.6	409.6	0.00	0.00	0.00
5,560.0	0.00	0.00	5,529.2	180.7	-367.6	409.6	0.00	0.00	0.00
5,600.0	0.00	0.00	5,569.2	180.7	-367.6	409.6	0.00	0.00	0.00
5,640.0	0.00	0.00	5,609.2	180.7	-367.6	409.6	0.00	0.00	0.00
5,680.0	0.00	0.00	5,649.2	180.7	-367.6	409.6	0.00	0.00	0.00
5,720.0	0.00	0.00	5,689.2	180.7	-367.6	409.6	0.00	0.00	0.00
5,760.0	0.00	0.00	5,729.2	180.7	-367.6	409.6	0.00	0.00	0.00
5,800.0	0.00	0.00	5,769.2	180.7	-367.6	409.6	0.00	0.00	0.00
5,840.0	0.00	0.00	5,809.2	180.7	-367.6	409.6	0.00	0.00	0.00
5,880.0	0.00	0.00	5,849.2	180.7	-367.6	409.6	0.00	0.00	0.00
5,920.0	0.00	0.00	5,889.2	180.7	-367.6	409.6	0.00	0.00	0.00
5,960.0	0.00	0.00	5,929.2	180.7	-367.6	409.6	0.00	0.00	0.00
6,000.0	0.00	0.00	5,969.2	180.7	-367.6	409.6	0.00	0.00	0.00
6,040.0	0.00	0.00	6,009.2	180.7	-367.6	409.6	0.00	0.00	0.00
6,080.0	0.00	0.00	6,049.2	180.7	-367.6	409.6	0.00	0.00	0.00

Database:	Landmark	Local Co-ordinate Reference:	Well Triangle 6-22
Company:	BAYSWATER EXPLORATION & PRODUCTION	TVD Reference:	WELL @ 4848.0ft (Original Well Elev)
Project:	SEC.22-T7N-R65W	MD Reference:	WELL @ 4848.0ft (Original Well Elev)
Site:	Triangle 4 Pad Sec.22-T7N-R65W	North Reference:	True
Well:	Triangle 6-22	Survey Calculation Method:	Minimum Curvature
Wellbore:	Wellbore #1		
Design:	Plan #1 (10-02-12)		

Planned Survey

Measured Depth (ft)	Inclination (°)	Azimuth (°)	Vertical Depth (ft)	+N/-S (ft)	+E/-W (ft)	Vertical Section (ft)	Dogleg Rate (°/100ft)	Build Rate (°/100ft)	Turn Rate (°/100ft)
6,120.0	0.00	0.00	6,089.2	180.7	-367.6	409.6	0.00	0.00	0.00
6,160.0	0.00	0.00	6,129.2	180.7	-367.6	409.6	0.00	0.00	0.00
6,200.0	0.00	0.00	6,169.2	180.7	-367.6	409.6	0.00	0.00	0.00
6,240.0	0.00	0.00	6,209.2	180.7	-367.6	409.6	0.00	0.00	0.00
6,280.0	0.00	0.00	6,249.2	180.7	-367.6	409.6	0.00	0.00	0.00
6,320.0	0.00	0.00	6,289.2	180.7	-367.6	409.6	0.00	0.00	0.00
6,360.0	0.00	0.00	6,329.2	180.7	-367.6	409.6	0.00	0.00	0.00
6,400.0	0.00	0.00	6,369.2	180.7	-367.6	409.6	0.00	0.00	0.00
6,440.0	0.00	0.00	6,409.2	180.7	-367.6	409.6	0.00	0.00	0.00
6,480.0	0.00	0.00	6,449.2	180.7	-367.6	409.6	0.00	0.00	0.00
6,520.0	0.00	0.00	6,489.2	180.7	-367.6	409.6	0.00	0.00	0.00
6,560.0	0.00	0.00	6,529.2	180.7	-367.6	409.6	0.00	0.00	0.00
6,600.0	0.00	0.00	6,569.2	180.7	-367.6	409.6	0.00	0.00	0.00
6,640.0	0.00	0.00	6,609.2	180.7	-367.6	409.6	0.00	0.00	0.00
6,680.0	0.00	0.00	6,649.2	180.7	-367.6	409.6	0.00	0.00	0.00
6,720.0	0.00	0.00	6,689.2	180.7	-367.6	409.6	0.00	0.00	0.00
6,760.0	0.00	0.00	6,729.2	180.7	-367.6	409.6	0.00	0.00	0.00
6,800.0	0.00	0.00	6,769.2	180.7	-367.6	409.6	0.00	0.00	0.00
6,840.0	0.00	0.00	6,809.2	180.7	-367.6	409.6	0.00	0.00	0.00
6,880.0	0.00	0.00	6,849.2	180.7	-367.6	409.6	0.00	0.00	0.00
6,920.0	0.00	0.00	6,889.2	180.7	-367.6	409.6	0.00	0.00	0.00
6,953.8	0.00	0.00	6,923.0	180.7	-367.6	409.6	0.00	0.00	0.00
NIOBRARA									
6,960.0	0.00	0.00	6,929.2	180.7	-367.6	409.6	0.00	0.00	0.00
7,000.0	0.00	0.00	6,969.2	180.7	-367.6	409.6	0.00	0.00	0.00
7,040.0	0.00	0.00	7,009.2	180.7	-367.6	409.6	0.00	0.00	0.00
7,080.0	0.00	0.00	7,049.2	180.7	-367.6	409.6	0.00	0.00	0.00
7,120.0	0.00	0.00	7,089.2	180.7	-367.6	409.6	0.00	0.00	0.00
7,160.0	0.00	0.00	7,129.2	180.7	-367.6	409.6	0.00	0.00	0.00
7,200.0	0.00	0.00	7,169.2	180.7	-367.6	409.6	0.00	0.00	0.00
7,211.8	0.00	0.00	7,181.0	180.7	-367.6	409.6	0.00	0.00	0.00
FORT HAYS									
7,240.0	0.00	0.00	7,209.2	180.7	-367.6	409.6	0.00	0.00	0.00
7,247.8	0.00	0.00	7,217.0	180.7	-367.6	409.6	0.00	0.00	0.00
CODELL									
7,280.0	0.00	0.00	7,249.2	180.7	-367.6	409.6	0.00	0.00	0.00
7,301.8	0.00	0.00	7,271.0	180.7	-367.6	409.6	0.00	0.00	0.00
GREENHORN									
7,320.0	0.00	0.00	7,289.2	180.7	-367.6	409.6	0.00	0.00	0.00
7,360.0	0.00	0.00	7,329.2	180.7	-367.6	409.6	0.00	0.00	0.00
7,389.8	0.00	0.00	7,359.0	180.7	-367.6	409.6	0.00	0.00	0.00
GRANEROS									
7,400.0	0.00	0.00	7,369.2	180.7	-367.6	409.6	0.00	0.00	0.00
7,400.8	0.00	0.00	7,370.0	180.7	-367.6	409.6	0.00	0.00	0.00

Casing Points

Measured Depth (ft)	Vertical Depth (ft)	Name	Casing Diameter (")	Hole Diameter (")
600.0	600.0	8 5/8"	8-5/8	12-1/4

Database:	Landmark	Local Co-ordinate Reference:	Well Triangle 6-22
Company:	BAYSWATER EXPLORATION & PRODUCTION	TVD Reference:	WELL @ 4848.0ft (Original Well Elev)
Project:	SEC.22-T7N-R65W	MD Reference:	WELL @ 4848.0ft (Original Well Elev)
Site:	Triangle 4 Pad Sec.22-T7N-R65W	North Reference:	True
Well:	Triangle 6-22	Survey Calculation Method:	Minimum Curvature
Wellbore:	Wellbore #1		
Design:	Plan #1 (10-02-12)		

Formations						
Measured Depth (ft)	Vertical Depth (ft)	Name	Lithology	Dip (°)	Dip Direction (°)	
3,804.1	3,785.0	PARKMAN		0.00		
6,953.8	6,923.0	NIOBRARA		0.00		
7,211.8	7,181.0	FORT HAYS		0.00		
7,247.8	7,217.0	CODELL		0.00		
7,301.8	7,271.0	GREENHORN		0.00		
7,389.8	7,359.0	GRANEROS		0.00		



Directional

BAYSWATER EXPLORATION & PRODUCTION

SEC.22-T7N-R65W

Triangle 4 Pad Sec.22-T7N-R65W

Triangle 6-22

Wellbore #1

Plan #1 (10-02-12)

Anticollision Report

02 October, 2012

Offset Design Survey Program: 0-MWD													Triangle 4 Pad Sec.22-T7N-R65W - Triangle 18-22 - Wellbore #1 - Plan #1 (10-02-12)		Offset Site Error:	0.0 ft
Reference		Offset		Semi Major Axis			Distance							Offset Well Error:	0.0 ft	
Measured Depth Depth (ft)	Vertical Depth (ft)	Measured Depth (ft)	Vertical Depth (ft)	Reference (ft)	Offset (ft)	Highside Toolface (°)	Offset Wellbore Centre +N/-S (ft)	+E/-W (ft)	Between Centres (ft)	Between Ellipses (ft)	Minimum Separation (ft)	Separation Factor	Warning			
1,800.0	1,800.0	1,768.2	1,750.8	3.9	4.9	-32.60	140.3	-89.7	173.6	164.9	8.76	19.824				
1,900.0	1,900.0	1,864.0	1,842.5	4.2	5.4	-34.05	160.5	-108.5	202.0	192.6	9.46	21.355				
2,000.0	2,000.0	1,959.7	1,934.2	4.4	5.9	-35.15	180.7	-127.2	230.5	220.4	10.17	22.661				
2,100.0	2,100.0	2,055.9	2,026.4	4.6	6.4	27.74	200.9	-146.1	257.6	248.2	9.38	27.450				
2,200.0	2,199.8	2,153.0	2,119.3	4.8	7.0	27.30	221.4	-165.1	281.7	271.9	9.86	28.570				
2,300.0	2,299.5	2,250.7	2,212.9	5.0	7.5	27.24	242.0	-184.2	302.8	292.5	10.35	29.270				
2,400.0	2,398.7	2,349.1	2,307.1	5.3	8.1	27.48	262.7	-203.5	320.9	310.0	10.84	29.599				
2,457.8	2,455.9	2,406.2	2,361.8	5.4	8.4	27.74	274.8	-214.6	329.9	318.8	11.13	29.638				
2,500.0	2,497.5	2,447.8	2,401.7	5.5	8.6	28.02	283.6	-222.8	336.2	324.8	11.36	29.603				
2,600.0	2,596.2	2,546.6	2,496.3	5.8	9.2	28.63	304.4	-242.1	351.0	339.1	11.89	29.511				
2,700.0	2,695.0	2,645.5	2,591.0	6.1	9.8	29.20	325.2	-261.5	365.8	353.4	12.44	29.407				
2,800.0	2,793.7	2,744.3	2,685.6	6.4	10.4	29.72	346.0	-280.9	380.7	367.7	13.00	29.296				
2,900.0	2,892.4	2,843.1	2,780.3	6.6	10.9	30.20	366.9	-300.2	395.7	382.1	13.56	29.178				
3,000.0	2,991.1	2,942.0	2,874.9	7.0	11.5	30.65	387.7	-319.6	410.6	396.5	14.13	29.057				
3,100.0	3,089.9	3,040.8	2,969.6	7.3	12.1	31.06	408.5	-338.9	425.6	410.9	14.71	28.934				
3,200.0	3,188.6	3,139.6	3,064.2	7.6	12.7	31.45	429.4	-358.3	440.6	425.3	15.29	28.809				
3,300.0	3,287.3	3,238.4	3,158.9	7.9	13.3	31.81	450.2	-377.6	455.6	439.7	15.88	28.685				
3,400.0	3,386.0	3,337.3	3,253.5	8.2	13.9	32.15	471.0	-397.0	470.6	454.1	16.48	28.562				
3,500.0	3,484.8	3,436.1	3,348.2	8.6	14.4	32.47	491.9	-416.3	485.7	468.6	17.08	28.441				
3,600.0	3,583.5	3,534.9	3,442.8	8.9	15.0	32.77	512.7	-435.7	500.7	483.0	17.68	28.321				
3,700.0	3,682.2	3,633.7	3,537.5	9.2	15.6	33.05	533.5	-455.0	515.8	497.5	18.29	28.204				
3,800.0	3,780.9	3,732.6	3,632.1	9.6	16.2	33.31	554.4	-474.4	530.9	512.0	18.90	28.089				
3,900.0	3,879.7	3,831.4	3,726.7	9.9	16.8	33.56	575.2	-493.7	545.9	526.4	19.51	27.977				
4,000.0	3,978.4	3,930.2	3,821.4	10.3	17.4	33.80	596.0	-513.1	561.0	540.9	20.13	27.868				
4,100.0	4,077.1	4,029.1	3,916.0	10.6	18.0	34.03	616.9	-532.5	576.2	555.4	20.75	27.762				
4,200.0	4,175.9	4,127.9	4,010.7	11.0	18.6	34.24	637.7	-551.8	591.3	569.9	21.38	27.659				
4,300.0	4,274.6	4,226.7	4,105.3	11.3	19.1	34.44	658.5	-571.2	606.4	584.4	22.00	27.559				
4,400.0	4,373.3	4,325.5	4,200.0	11.7	19.7	34.63	679.4	-590.5	621.5	598.9	22.63	27.462				
4,500.0	4,472.0	4,424.4	4,294.6	12.0	20.3	34.82	700.2	-609.9	636.7	613.4	23.26	27.368				
4,573.0	4,544.1	4,496.5	4,363.7	12.3	20.8	34.95	715.4	-624.0	647.7	624.0	23.73	27.301				
4,600.0	4,570.8	4,523.2	4,389.3	12.4	20.9	35.03	721.0	-629.2	651.9	628.0	23.89	27.293				
4,700.0	4,669.9	4,621.7	4,483.6	12.6	21.5	35.27	741.8	-648.5	669.2	644.8	24.42	27.410				
4,800.0	4,769.4	4,719.6	4,577.4	12.9	22.1	35.37	762.4	-667.7	689.3	664.4	24.90	27.687				
4,900.0	4,869.2	4,816.9	4,670.5	13.1	22.7	35.34	783.0	-686.7	712.3	686.9	25.33	28.117				
5,000.0	4,969.2	4,913.4	4,763.0	13.2	23.3	35.21	803.3	-705.6	738.0	712.2	25.72	28.695				
5,030.8	5,000.0	4,942.9	4,791.3	13.3	23.4	-28.67	809.5	-711.4	746.4	720.6	25.83	28.903				
5,100.0	5,069.2	5,009.2	4,854.7	13.4	23.8	-29.03	823.5	-724.4	765.8	739.7	26.10	29.336				
5,200.0	5,169.2	5,104.9	4,946.4	13.6	24.4	-29.53	843.7	-743.1	793.8	767.3	26.53	29.921				
5,300.0	5,269.2	5,226.1	5,062.8	13.7	25.0	-30.09	868.2	-765.9	820.9	793.9	26.98	30.421				
5,400.0	5,369.2	5,361.9	5,194.8	13.9	25.6	-30.58	891.5	-787.6	843.8	816.4	27.43	30.762				
5,500.0	5,469.2	5,500.5	5,331.0	14.1	26.0	-30.95	910.6	-805.3	862.2	834.3	27.88	30.926				
5,600.0	5,569.2	5,641.4	5,470.5	14.3	26.4	-31.22	924.9	-818.6	875.8	847.5	28.32	30.927				
5,700.0	5,669.2	5,783.9	5,612.4	14.5	26.7	-31.39	934.4	-827.4	884.7	855.9	28.75	30.770				
5,800.0	5,769.2	5,927.3	5,755.7	14.7	26.9	-31.46	938.6	-831.4	888.6	859.5	29.17	30.465				
5,900.0	5,869.2	6,040.8	5,869.2	14.9	27.0	-31.47	938.9	-831.6	888.9	859.3	29.55	30.078				
6,000.0	5,969.2	6,140.8	5,969.2	15.1	27.1	-31.47	938.9	-831.6	888.9	858.9	29.93	29.697				
6,100.0	6,069.2	6,240.8	6,069.2	15.3	27.2	-31.47	938.9	-831.6	888.9	858.6	30.31	29.324				
6,200.0	6,169.2	6,340.8	6,169.2	15.5	27.3	-31.47	938.9	-831.6	888.9	858.2	30.69	28.959				
6,300.0	6,269.2	6,440.8	6,269.2	15.6	27.4	-31.47	938.9	-831.6	888.9	857.8	31.08	28.601				
6,400.0	6,369.2	6,540.8	6,369.2	15.8	27.5	-31.47	938.9	-831.6	888.9	857.4	31.46	28.250				
6,500.0	6,469.2	6,640.8	6,469.2	16.0	27.6	-31.47	938.9	-831.6	888.9	857.0	31.85	27.907				

Company:	BAYSWATER EXPLORATION & PRODUCTION	Local Co-ordinate Reference:	Well Triangle 6-22
Project:	SEC.22-T7N-R65W	TVD Reference:	WELL @ 4848.0ft (Original Well Elev)
Reference Site:	Triangle 4 Pad Sec.22-T7N-R65W	MD Reference:	WELL @ 4848.0ft (Original Well Elev)
Site Error:	0.0ft	North Reference:	True
Reference Well:	Triangle 6-22	Survey Calculation Method:	Minimum Curvature
Well Error:	0.0ft	Output errors are at	2.00 sigma
Reference Wellbore	Wellbore #1	Database:	Landmark
Reference Design:	Plan #1 (10-02-12)	Offset TVD Reference:	Offset Datum

Offset Design Triangle 4 Pad Sec.22-T7N-R65W - Triangle 18-22 - Wellbore #1 - Plan #1 (10-02-12)												Offset Site Error:	0.0 ft
Survey Program: 0-MWD												Offset Well Error:	0.0 ft
Reference	Offset	Semi Major Axis		Distance									
Measured Depth (ft)	Vertical Depth (ft)	Measured Depth (ft)	Vertical Depth (ft)	Reference (ft)	Offset (ft)	Highside Toolface (°)	Offset Wellbore Centre +N/-S (ft)	Offset Wellbore Centre +E/-W (ft)	Between Centres (ft)	Between Ellipses (ft)	Minimum Separation (ft)	Separation Factor	Warning
6,600.0	6,569.2	6,740.8	6,569.2	16.2	27.8	-31.47	938.9	-831.6	888.9	856.6	32.24	27.570	
6,700.0	6,669.2	6,840.8	6,669.2	16.4	27.9	-31.47	938.9	-831.6	888.9	856.2	32.63	27.240	
6,800.0	6,769.2	6,940.8	6,769.2	16.6	28.0	-31.47	938.9	-831.6	888.9	855.9	33.02	26.917	
6,900.0	6,869.2	7,040.8	6,869.2	16.8	28.1	-31.47	938.9	-831.6	888.9	855.5	33.42	26.600	
7,000.0	6,969.2	7,140.8	6,969.2	17.0	28.2	-31.47	938.9	-831.6	888.9	855.1	33.81	26.290	
7,100.0	7,069.2	7,240.8	7,069.2	17.2	28.3	-31.47	938.9	-831.6	888.9	854.7	34.21	25.986	
7,200.0	7,169.2	7,340.8	7,169.2	17.4	28.5	-31.47	938.9	-831.6	888.9	854.3	34.60	25.687	
7,300.0	7,269.2	7,440.8	7,269.2	17.6	28.6	-31.47	938.9	-831.6	888.9	853.9	35.00	25.395	
7,400.8	7,370.0	7,541.6	7,370.0	17.8	28.7	-31.47	938.9	-831.6	888.9	853.5	35.40	25.106	

Company:	BAYSWATER EXPLORATION & PRODUCTION	Local Co-ordinate Reference:	Well Triangle 6-22
Project:	SEC.22-T7N-R65W	TVD Reference:	WELL @ 4848.0ft (Original Well Elev)
Reference Site:	Triangle 4 Pad Sec.22-T7N-R65W	MD Reference:	WELL @ 4848.0ft (Original Well Elev)
Site Error:	0.0ft	North Reference:	True
Reference Well:	Triangle 6-22	Survey Calculation Method:	Minimum Curvature
Well Error:	0.0ft	Output errors are at	2.00 sigma
Reference Wellbore	Wellbore #1	Database:	Landmark
Reference Design:	Plan #1 (10-02-12)	Offset TVD Reference:	Offset Datum

Offset Design Triangle 4 Pad Sec.22-T7N-R65W - Triangle 32-22 - Wellbore #1 - Plan #1 (10-02-12)													Offset Site Error:	0.0 ft
Survey Program: 0-MWD													Offset Well Error:	0.0 ft
Measured Depth (ft)	Vertical Depth (ft)	Measured Depth (ft)	Vertical Depth (ft)	Reference	Offset	Highside Toolface (°)	Offset Wellbore Centre +N/-S (ft)	+E/-W (ft)	Between Centres (ft)	Between Ellipses (ft)	Minimum Separation (ft)	Separation Factor	Warning	
0.0	0.0	0.0	0.0	0.0	0.0	-142.67	-12.0	-9.2	15.1	15.1	0.00	N/A		
100.0	100.0	100.0	100.0	0.1	0.1	-142.67	-12.0	-9.2	15.1	14.9	0.22	67.270		
200.0	200.0	200.0	200.0	0.3	0.3	-142.67	-12.0	-9.2	15.1	14.4	0.67	22.423 CC, ES		
300.0	300.0	299.6	299.6	0.6	0.6	-138.32	-12.2	-10.9	16.4	15.3	1.11	14.725		
400.0	400.0	398.9	398.8	0.8	0.8	-128.71	-12.8	-16.0	20.6	19.0	1.56	13.206 SF		
500.0	500.0	497.8	497.3	1.0	1.0	-119.48	-13.9	-24.5	28.3	26.3	2.02	13.999		
600.0	600.0	596.0	594.7	1.2	1.3	-112.82	-15.3	-36.3	39.7	37.2	2.51	15.808		
700.0	700.0	693.2	690.8	1.5	1.6	-108.42	-17.1	-51.2	54.8	51.7	3.04	18.008		
800.0	800.0	789.3	785.2	1.7	2.0	-105.53	-19.2	-69.1	73.3	69.7	3.61	20.297		
900.0	900.0	884.1	877.6	1.9	2.4	-103.57	-21.7	-89.9	95.1	90.9	4.22	22.530		
1,000.0	1,000.0	977.4	967.9	2.1	2.9	-102.21	-24.5	-113.3	120.2	115.4	4.88	24.644		
1,100.0	1,100.0	1,069.0	1,055.8	2.4	3.4	-101.22	-27.6	-139.0	148.5	142.9	5.58	26.615		
1,200.0	1,200.0	1,158.9	1,141.0	2.6	4.0	-100.50	-30.9	-167.0	179.8	173.5	6.32	28.443		
1,300.0	1,300.0	1,246.8	1,223.6	2.8	4.6	-99.95	-34.5	-196.9	214.0	206.9	7.10	30.139		
1,400.0	1,400.0	1,332.6	1,303.4	3.0	5.2	-99.52	-38.3	-228.6	251.1	243.2	7.92	31.716		
1,500.0	1,500.0	1,416.4	1,380.2	3.3	5.9	-99.18	-42.3	-261.8	291.0	282.2	8.77	33.190		
1,600.0	1,600.0	1,500.0	1,455.8	3.5	6.7	-98.90	-46.5	-297.0	333.4	323.8	9.66	34.520		
1,700.0	1,700.0	1,578.2	1,525.7	3.7	7.4	-98.69	-50.7	-332.0	378.4	367.9	10.56	35.841		
1,800.0	1,800.0	1,667.0	1,604.5	3.9	8.3	-98.49	-55.6	-372.6	424.5	412.9	11.57	36.680		
1,900.0	1,900.0	1,755.7	1,683.2	4.2	9.2	-98.32	-60.5	-413.2	470.6	458.0	12.59	37.365		
2,000.0	2,000.0	1,844.5	1,762.0	4.4	10.0	-98.19	-65.3	-453.9	516.6	503.0	13.62	37.933		
2,100.0	2,100.0	1,933.9	1,841.3	4.6	10.9	-33.81	-70.2	-494.8	561.4	551.6	9.81	57.212		
2,200.0	2,199.8	2,024.5	1,921.8	4.8	11.8	-33.50	-75.2	-536.2	603.6	593.2	10.35	58.295		
2,300.0	2,299.5	2,116.3	2,003.2	5.0	12.8	-33.39	-80.2	-578.2	643.1	632.2	10.91	58.972		
2,400.0	2,398.7	2,209.1	2,085.6	5.3	13.7	-33.46	-85.3	-620.7	680.0	668.5	11.47	59.299		
2,457.8	2,455.9	2,263.2	2,133.6	5.4	14.2	-33.56	-88.3	-645.4	700.1	688.3	11.80	59.344		
2,500.0	2,497.5	2,302.7	2,168.7	5.5	14.6	-33.82	-90.5	-663.5	714.4	702.4	12.03	59.366		
2,600.0	2,596.2	2,396.5	2,251.9	5.8	15.6	-34.39	-95.6	-706.4	748.5	735.9	12.61	59.381		
2,700.0	2,695.0	2,490.3	2,335.1	6.1	16.5	-34.91	-100.8	-749.3	782.6	769.4	13.19	59.352		
2,800.0	2,793.7	2,584.0	2,418.3	6.4	17.5	-35.39	-105.9	-792.2	816.8	803.0	13.78	59.288		
2,900.0	2,892.4	2,677.8	2,501.5	6.6	18.4	-35.83	-111.1	-835.1	851.0	836.7	14.38	59.196		
3,000.0	2,991.1	2,771.6	2,584.8	7.0	19.4	-36.24	-116.2	-878.0	885.3	870.3	14.98	59.082		
3,100.0	3,089.9	2,865.3	2,668.0	7.3	20.3	-36.62	-121.3	-920.9	919.6	904.0	15.60	58.951		
3,200.0	3,188.6	2,959.1	2,751.2	7.6	21.3	-36.97	-126.5	-963.8	953.9	937.7	16.22	58.808		
3,300.0	3,287.3	3,052.9	2,834.4	7.9	22.2	-37.29	-131.6	-1,006.7	988.3	971.4	16.85	58.655		
3,400.0	3,386.0	3,146.6	2,917.6	8.2	23.2	-37.59	-136.8	-1,049.6	1,022.7	1,005.2	17.48	58.495		
3,500.0	3,484.8	3,240.4	3,000.9	8.6	24.1	-37.88	-141.9	-1,092.5	1,057.1	1,039.0	18.12	58.331		
3,600.0	3,583.5	3,334.2	3,084.1	8.9	25.1	-38.14	-147.1	-1,135.4	1,091.5	1,072.8	18.77	58.164		
3,700.0	3,682.2	3,427.9	3,167.3	9.2	26.1	-38.39	-152.2	-1,178.3	1,126.0	1,106.6	19.42	57.995		
3,800.0	3,780.9	3,521.7	3,250.5	9.6	27.0	-38.63	-157.3	-1,221.3	1,160.5	1,140.4	20.07	57.827		
3,900.0	3,879.7	3,615.5	3,333.7	9.9	28.0	-38.85	-162.5	-1,264.2	1,194.9	1,174.2	20.72	57.659		
4,000.0	3,978.4	3,709.2	3,416.9	10.3	28.9	-39.06	-167.6	-1,307.1	1,229.4	1,208.1	21.38	57.493		
4,100.0	4,077.1	3,803.0	3,500.2	10.6	29.9	-39.25	-172.8	-1,350.0	1,264.0	1,241.9	22.05	57.329		
4,200.0	4,175.9	3,896.8	3,583.4	11.0	30.8	-39.44	-177.9	-1,392.9	1,298.5	1,275.8	22.71	57.167		
4,300.0	4,274.6	3,990.5	3,666.6	11.3	31.8	-39.62	-183.1	-1,435.8	1,333.0	1,309.6	23.38	57.008		
4,400.0	4,373.3	4,084.3	3,749.8	11.7	32.7	-39.79	-188.2	-1,478.7	1,367.6	1,343.5	24.05	56.852		
4,500.0	4,472.0	4,178.1	3,833.0	12.0	33.7	-39.95	-193.3	-1,521.6	1,402.1	1,377.4	24.73	56.700		
4,573.0	4,544.1	4,246.5	3,893.8	12.3	34.4	-40.06	-197.1	-1,552.9	1,427.4	1,402.2	25.22	56.591		
4,600.0	4,570.8	4,271.8	3,916.2	12.4	34.6	-40.23	-198.5	-1,564.5	1,436.8	1,411.4	25.39	56.586		
4,700.0	4,669.9	4,364.9	3,998.8	12.6	35.6	-40.81	-203.6	-1,607.0	1,473.3	1,447.3	25.97	56.727		
4,800.0	4,769.4	4,457.0	4,080.6	12.9	36.5	-41.34	-208.7	-1,649.2	1,512.2	1,485.7	26.52	57.025		

CC - Min centre to center distance or convergent point, SF - min separation factor, ES - min ellipse separation

Company:	BAYSWATER EXPLORATION & PRODUCTION	Local Co-ordinate Reference:	Well Triangle 6-22
Project:	SEC.22-T7N-R65W	TVD Reference:	WELL @ 4848.0ft (Original Well Elev)
Reference Site:	Triangle 4 Pad Sec.22-T7N-R65W	MD Reference:	WELL @ 4848.0ft (Original Well Elev)
Site Error:	0.0ft	North Reference:	True
Reference Well:	Triangle 6-22	Survey Calculation Method:	Minimum Curvature
Well Error:	0.0ft	Output errors are at	2.00 sigma
Reference Wellbore	Wellbore #1	Database:	Landmark
Reference Design:	Plan #1 (10-02-12)	Offset TVD Reference:	Offset Datum

Offset Design Triangle 4 Pad Sec.22-T7N-R65W - TRIANGLE 32-22 - Wellbore #1 - Plan #1 (10-02-12)													Offset Site Error:	0.0 ft
Survey Program: 0-MWD													Offset Well Error:	0.0 ft
Measured Depth (ft)	Vertical Depth (ft)	Measured Depth (ft)	Vertical Depth (ft)	Reference	Offset	Highside Toolface (°)	Offset Wellbore Centre +N/-S (ft)	Offset Wellbore Centre +E/-W (ft)	Between Centres (ft)	Between Ellipses (ft)	Minimum Separation (ft)	Separation Factor	Warning	
4,900.0	4,869.2	4,548.0	4,161.3	13.1	37.5	-41.83	-213.6	-1,690.8	1,553.6	1,526.5	27.03	57.472		
5,000.0	4,969.2	4,637.8	4,241.0	13.2	38.4	-42.28	-218.6	-1,731.9	1,597.3	1,569.8	27.51	58.058		
5,030.8	5,000.0	4,665.2	4,265.4	13.3	38.7	-106.23	-220.1	-1,744.5	1,611.2	1,583.6	27.65	58.266		
5,100.0	5,069.2	4,726.6	4,319.9	13.4	39.3	-106.05	-223.4	-1,772.5	1,642.8	1,614.8	27.97	58.742		
5,200.0	5,169.2	4,815.4	4,398.6	13.6	40.2	-105.80	-228.3	-1,813.2	1,688.4	1,659.9	28.44	59.374		
5,300.0	5,269.2	4,904.1	4,477.4	13.7	41.1	-105.56	-233.2	-1,853.8	1,734.0	1,705.1	28.91	59.979		
5,400.0	5,369.2	4,992.9	4,556.2	13.9	42.0	-105.34	-238.0	-1,894.4	1,779.7	1,750.3	29.39	60.559		
5,500.0	5,469.2	5,081.6	4,634.9	14.1	42.9	-105.12	-242.9	-1,935.0	1,825.4	1,795.5	29.87	61.115		
5,600.0	5,569.2	5,240.5	4,776.8	14.3	44.3	-104.78	-251.4	-2,005.9	1,870.4	1,839.8	30.55	61.229		
5,700.0	5,669.2	5,507.8	5,023.5	14.5	46.2	-104.32	-263.6	-2,107.8	1,908.6	1,877.1	31.48	60.635		
5,800.0	5,769.2	5,794.4	5,297.4	14.7	47.6	-103.99	-273.6	-2,191.3	1,937.7	1,905.4	32.38	59.851		
5,900.0	5,869.2	6,096.2	5,593.4	14.9	48.6	-103.77	-280.6	-2,249.4	1,957.0	1,923.8	33.19	58.960		
6,000.0	5,969.2	6,407.4	5,903.2	15.1	49.1	-103.68	-283.9	-2,276.5	1,965.8	1,931.9	33.88	58.027		
6,100.0	6,069.2	6,573.4	6,069.2	15.3	49.3	-103.67	-284.1	-2,278.2	1,966.3	1,932.0	34.29	57.349		
6,200.0	6,169.2	6,673.4	6,169.2	15.5	49.3	-103.67	-284.1	-2,278.2	1,966.3	1,931.7	34.61	56.807		
6,300.0	6,269.2	6,773.4	6,269.2	15.6	49.4	-103.67	-284.1	-2,278.2	1,966.3	1,931.3	34.94	56.271		
6,400.0	6,369.2	6,873.4	6,369.2	15.8	49.4	-103.67	-284.1	-2,278.2	1,966.3	1,931.0	35.27	55.741		
6,500.0	6,469.2	6,973.4	6,469.2	16.0	49.5	-103.67	-284.1	-2,278.2	1,966.3	1,930.7	35.61	55.218		
6,600.0	6,569.2	7,073.4	6,569.2	16.2	49.6	-103.67	-284.1	-2,278.2	1,966.3	1,930.3	35.95	54.702		
6,700.0	6,669.2	7,173.4	6,669.2	16.4	49.6	-103.67	-284.1	-2,278.2	1,966.3	1,930.0	36.28	54.191		
6,800.0	6,769.2	7,273.4	6,769.2	16.6	49.7	-103.67	-284.1	-2,278.2	1,966.3	1,929.6	36.62	53.688		
6,900.0	6,869.2	7,373.4	6,869.2	16.8	49.7	-103.67	-284.1	-2,278.2	1,966.3	1,929.3	36.97	53.190		
7,000.0	6,969.2	7,473.4	6,969.2	17.0	49.8	-103.67	-284.1	-2,278.2	1,966.3	1,929.0	37.31	52.699		
7,100.0	7,069.2	7,573.4	7,069.2	17.2	49.9	-103.67	-284.1	-2,278.2	1,966.3	1,928.6	37.66	52.215		
7,200.0	7,169.2	7,673.4	7,169.2	17.4	49.9	-103.67	-284.1	-2,278.2	1,966.3	1,928.3	38.01	51.736		
7,300.0	7,269.2	7,773.4	7,269.2	17.6	50.0	-103.67	-284.1	-2,278.2	1,966.3	1,927.9	38.36	51.264		
7,400.8	7,370.0	7,874.2	7,370.0	17.8	50.1	-103.67	-284.1	-2,278.2	1,966.3	1,927.6	38.71	50.794		

Company:	BAYSWATER EXPLORATION & PRODUCTION	Local Co-ordinate Reference:	Well Triangle 6-22
Project:	SEC.22-T7N-R65W	TVD Reference:	WELL @ 4848.0ft (Original Well Elev)
Reference Site:	Triangle 4 Pad Sec.22-T7N-R65W	MD Reference:	WELL @ 4848.0ft (Original Well Elev)
Site Error:	0.0ft	North Reference:	True
Reference Well:	Triangle 6-22	Survey Calculation Method:	Minimum Curvature
Well Error:	0.0ft	Output errors are at	2.00 sigma
Reference Wellbore	Wellbore #1	Database:	Landmark
Reference Design:	Plan #1 (10-02-12)	Offset TVD Reference:	Offset Datum

Offset Design Triangle 4 Pad Sec.22-T7N-R65W - Triangle 4-22 - Wellbore #1 - Plan #1 (10-02-12)													Offset Site Error:	0.0 ft
Survey Program: 0-MWD													Offset Well Error:	0.0 ft
Measured Depth (ft)	Vertical Depth (ft)	Measured Depth (ft)	Vertical Depth (ft)	Reference	Offset	Semi Major Axis	Highside Toolface (°)	Offset Wellbore Centre +N/-S (ft)	+E/-W (ft)	Between Centres (ft)	Between Ellipses (ft)	Minimum Separation (ft)	Separation Factor	Warning
0.0	0.0	0.0	0.0	0.0	0.0	38.18	38.18	11.7	9.2	14.8	14.8	0.00	N/A	
100.0	100.0	100.0	100.0	0.1	0.1	38.18	38.18	11.7	9.2	14.8	14.6	0.22	66.003	
200.0	200.0	200.0	200.0	0.3	0.3	38.18	38.18	11.7	9.2	14.8	14.2	0.67	22.001	
243.2	243.2	243.2	243.2	0.4	0.4	36.92	36.92	11.9	8.9	14.8	14.0	0.87	17.103 CC	
300.0	300.0	300.0	300.0	0.6	0.6	31.45	31.45	12.7	7.8	14.9	13.8	1.12	13.292 ES	
400.0	400.0	399.7	399.5	0.8	0.8	12.83	12.83	15.8	3.6	16.3	14.7	1.57	10.332 SF	
500.0	500.0	498.9	498.4	1.0	1.0	-8.89	-8.89	21.0	-3.3	21.3	19.3	2.05	10.434	
600.0	600.0	597.5	596.2	1.2	1.3	-24.48	-24.48	28.2	-12.8	31.2	28.7	2.56	12.218	
700.0	700.0	695.1	692.6	1.5	1.6	-33.78	-33.78	37.3	-24.9	45.5	42.4	3.10	14.653	
800.0	800.0	791.5	787.3	1.7	2.0	-39.31	-39.31	48.2	-39.5	63.6	59.9	3.69	17.237	
900.0	900.0	886.6	880.1	1.9	2.4	-42.78	-42.78	60.9	-56.3	85.3	81.0	4.31	19.761	
1,000.0	1,000.0	980.2	970.6	2.1	2.9	-45.06	-45.06	75.1	-75.2	110.3	105.3	4.98	22.146	
1,100.0	1,100.0	1,072.1	1,058.7	2.4	3.4	-46.64	-46.64	90.8	-96.1	138.5	132.8	5.69	24.367	
1,200.0	1,200.0	1,162.2	1,144.2	2.6	4.0	-47.78	-47.78	107.8	-118.8	169.9	163.4	6.43	26.422	
1,300.0	1,300.0	1,250.4	1,227.0	2.8	4.5	-48.62	-48.62	126.0	-143.1	204.2	197.0	7.21	28.323	
1,400.0	1,400.0	1,336.5	1,306.9	3.0	5.2	-49.26	-49.26	145.3	-168.7	241.3	233.3	8.02	30.087	
1,500.0	1,500.0	1,420.5	1,383.9	3.3	5.9	-49.76	-49.76	165.5	-195.6	281.3	272.4	8.86	31.741	
1,600.0	1,600.0	1,506.9	1,462.2	3.5	6.6	-50.18	-50.18	187.4	-224.8	323.5	313.8	9.76	33.138	
1,700.0	1,700.0	1,597.3	1,544.0	3.7	7.4	-50.52	-50.52	210.6	-255.6	366.1	355.4	10.71	34.184	
1,800.0	1,800.0	1,687.8	1,625.8	3.9	8.2	-50.78	-50.78	233.8	-286.5	408.7	397.1	11.66	35.042	
1,900.0	1,900.0	1,778.2	1,707.6	4.2	9.0	-51.00	-51.00	257.0	-317.3	451.4	438.7	12.62	35.758	
2,000.0	2,000.0	1,868.7	1,789.4	4.4	9.8	-51.18	-51.18	280.1	-348.2	494.0	480.4	13.58	36.365	
2,100.0	2,100.0	1,959.9	1,871.9	4.6	10.6	12.34	12.34	303.5	-379.2	535.1	525.1	9.90	54.025	
2,200.0	2,199.8	2,052.4	1,955.6	4.8	11.4	12.15	12.15	327.2	-410.8	573.0	562.6	10.45	54.849	
2,300.0	2,299.5	2,146.1	2,040.4	5.0	12.3	12.06	12.06	351.2	-442.7	607.8	596.8	11.00	55.259	
2,400.0	2,398.7	2,241.0	2,126.2	5.3	13.1	12.05	12.05	375.5	-475.1	639.3	627.8	11.56	55.317	
2,457.8	2,455.9	2,296.4	2,176.3	5.4	13.6	12.08	12.08	389.7	-494.0	656.1	644.2	11.88	55.210	
2,500.0	2,497.5	2,336.8	2,212.9	5.5	14.0	12.16	12.16	400.0	-507.7	667.9	655.8	12.12	55.106	
2,600.0	2,596.2	2,432.8	2,299.7	5.8	14.8	12.33	12.33	424.6	-540.5	695.9	683.3	12.69	54.861	
2,700.0	2,695.0	2,528.8	2,386.5	6.1	15.7	12.49	12.49	449.2	-573.2	724.0	710.7	13.26	54.619	
2,800.0	2,793.7	2,624.7	2,473.3	6.4	16.6	12.63	12.63	473.8	-605.9	752.1	738.2	13.83	54.380	
2,900.0	2,892.4	2,720.7	2,560.1	6.6	17.4	12.77	12.77	498.4	-638.6	780.1	765.7	14.41	54.147	
3,000.0	2,991.1	2,816.7	2,646.9	7.0	18.3	12.90	12.90	522.9	-671.3	808.2	793.2	14.99	53.920	
3,100.0	3,089.9	2,912.6	2,733.7	7.3	19.2	13.01	13.01	547.5	-704.1	836.2	820.7	15.57	53.700	
3,200.0	3,188.6	3,008.6	2,820.5	7.6	20.0	13.12	13.12	572.1	-736.8	864.3	848.2	16.16	53.487	
3,300.0	3,287.3	3,104.5	2,907.3	7.9	20.9	13.23	13.23	596.7	-769.5	892.4	875.6	16.75	53.281	
3,400.0	3,386.0	3,200.5	2,994.1	8.2	21.8	13.33	13.33	621.3	-802.2	920.5	903.1	17.34	53.082	
3,500.0	3,484.8	3,296.5	3,080.9	8.6	22.7	13.42	13.42	645.9	-834.9	948.5	930.6	17.93	52.890	
3,600.0	3,583.5	3,392.4	3,167.7	8.9	23.5	13.50	13.50	670.4	-867.6	976.6	958.1	18.53	52.705	
3,700.0	3,682.2	3,488.4	3,254.5	9.2	24.4	13.59	13.59	695.0	-900.4	1,004.7	985.6	19.13	52.527	
3,800.0	3,780.9	3,584.4	3,341.3	9.6	25.3	13.66	13.66	719.6	-933.1	1,032.8	1,013.1	19.73	52.356	
3,900.0	3,879.7	3,680.3	3,428.1	9.9	26.1	13.74	13.74	744.2	-965.8	1,060.9	1,040.6	20.33	52.191	
4,000.0	3,978.4	3,776.3	3,514.9	10.3	27.0	13.80	13.80	768.8	-998.5	1,089.0	1,068.0	20.93	52.032	
4,100.0	4,077.1	3,872.3	3,601.7	10.6	27.9	13.87	13.87	793.3	-1,031.2	1,117.1	1,095.5	21.53	51.879	
4,200.0	4,175.9	3,968.2	3,688.5	11.0	28.7	13.93	13.93	817.9	-1,064.0	1,145.1	1,123.0	22.14	51.732	
4,300.0	4,274.6	4,064.2	3,775.3	11.3	29.6	13.99	13.99	842.5	-1,096.7	1,173.2	1,150.5	22.74	51.590	
4,400.0	4,373.3	4,160.2	3,862.1	11.7	30.5	14.05	14.05	867.1	-1,129.4	1,201.3	1,178.0	23.35	51.453	
4,500.0	4,472.0	4,256.1	3,948.9	12.0	31.4	14.10	14.10	891.7	-1,162.1	1,229.4	1,205.5	23.96	51.321	
4,573.0	4,544.1	4,326.2	4,012.3	12.3	32.0	14.14	14.14	909.6	-1,186.0	1,249.9	1,225.5	24.40	51.227	
4,600.0	4,570.8	4,352.1	4,035.7	12.4	32.2	14.19	14.19	916.2	-1,194.8	1,257.6	1,233.1	24.54	51.256	
4,700.0	4,669.9	4,447.3	4,121.8	12.6	33.1	14.37	14.37	940.6	-1,227.3	1,288.2	1,263.2	24.99	51.548	

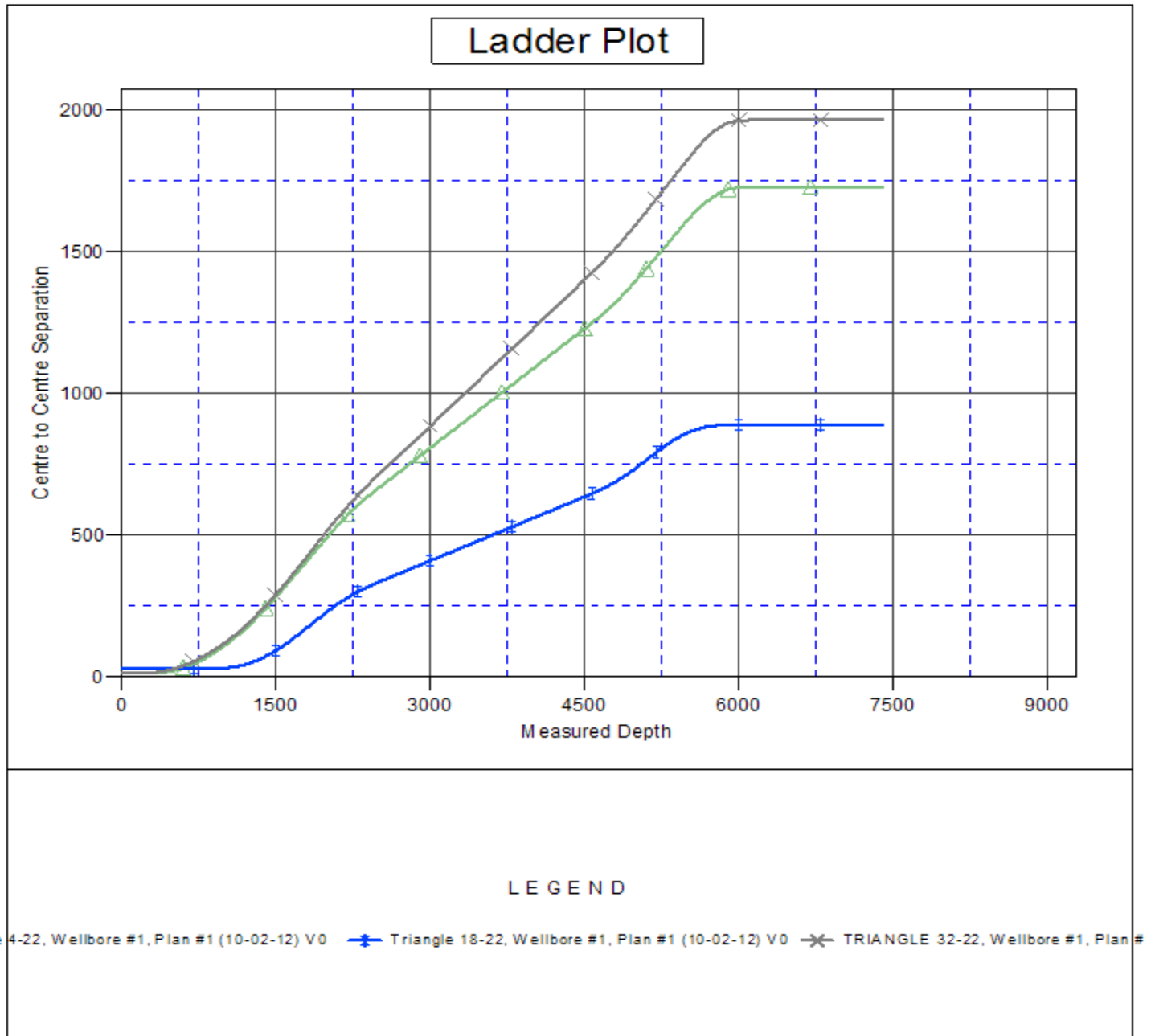
CC - Min centre to center distance or convergent point, SF - min separation factor, ES - min ellipse separation

Company:	BAYSWATER EXPLORATION & PRODUCTION	Local Co-ordinate Reference:	Well Triangle 6-22
Project:	SEC.22-T7N-R65W	TVD Reference:	WELL @ 4848.0ft (Original Well Elev)
Reference Site:	Triangle 4 Pad Sec.22-T7N-R65W	MD Reference:	WELL @ 4848.0ft (Original Well Elev)
Site Error:	0.0ft	North Reference:	True
Reference Well:	Triangle 6-22	Survey Calculation Method:	Minimum Curvature
Well Error:	0.0ft	Output errors are at	2.00 sigma
Reference Wellbore	Wellbore #1	Database:	Landmark
Reference Design:	Plan #1 (10-02-12)	Offset TVD Reference:	Offset Datum

Offset Design Triangle 4 Pad Sec.22-T7N-R65W - Triangle 4-22 - Wellbore #1 - Plan #1 (10-02-12)													Offset Site Error:	0.0 ft
Survey Program: 0-MWD													Offset Well Error:	0.0 ft
Measured Depth (ft)	Vertical Depth (ft)	Measured Depth (ft)	Vertical Depth (ft)	Reference	Offset	Semi Major Axis	Highside Toolface (°)	Offset Wellbore Centre +N/-S (ft)	Offset Wellbore Centre +E/-W (ft)	Between Centres (ft)	Between Ellipses (ft)	Minimum Separation (ft)	Separation Factor	Warning
4,800.0	4,769.4	4,541.4	4,206.9	12.9	33.9	14.53		964.7	-1,259.4	1,322.0	1,296.6	25.40	52.040	
4,900.0	4,869.2	4,634.3	4,291.0	13.1	34.8	14.67		988.5	-1,291.0	1,358.9	1,333.2	25.77	52.726	
5,000.0	4,969.2	4,725.9	4,373.8	13.2	35.6	14.79		1,012.0	-1,322.3	1,399.0	1,372.9	26.10	53.601	
5,030.8	5,000.0	4,753.9	4,399.1	13.3	35.9	-48.99		1,019.2	-1,331.8	1,412.0	1,385.8	26.19	53.908	
5,100.0	5,069.2	4,816.4	4,455.7	13.4	36.4	-49.07		1,035.2	-1,353.1	1,441.4	1,414.9	26.53	54.327	
5,200.0	5,169.2	4,906.9	4,537.5	13.6	37.3	-49.19		1,058.4	-1,384.0	1,484.0	1,456.9	27.04	54.876	
5,300.0	5,269.2	4,997.3	4,619.3	13.7	38.1	-49.30		1,081.5	-1,414.8	1,526.6	1,499.0	27.55	55.402	
5,400.0	5,369.2	5,087.8	4,701.2	13.9	38.9	-49.40		1,104.7	-1,445.6	1,569.1	1,541.1	28.07	55.907	
5,500.0	5,469.2	5,184.8	4,788.9	14.1	39.8	-49.50		1,129.5	-1,478.7	1,611.7	1,583.1	28.60	56.352	
5,600.0	5,569.2	5,398.3	4,985.6	14.3	41.2	-49.70		1,179.4	-1,545.0	1,650.5	1,621.1	29.43	56.084	
5,700.0	5,669.2	5,624.6	5,200.2	14.5	42.4	-49.85		1,222.4	-1,602.4	1,682.2	1,651.9	30.24	55.634	
5,800.0	5,769.2	5,861.8	5,430.4	14.7	43.4	-49.96		1,256.5	-1,647.7	1,706.1	1,675.1	31.00	55.035	
5,900.0	5,869.2	6,107.2	5,672.8	14.9	44.1	-50.03		1,279.6	-1,678.4	1,721.7	1,690.1	31.69	54.328	
6,000.0	5,969.2	6,357.6	5,922.4	15.1	44.5	-50.06		1,290.2	-1,692.6	1,728.8	1,696.5	32.28	53.549	
6,100.0	6,069.2	6,504.4	6,069.2	15.3	44.6	-50.06		1,290.9	-1,693.4	1,729.2	1,696.5	32.69	52.904	
6,200.0	6,169.2	6,604.4	6,169.2	15.5	44.7	-50.06		1,290.9	-1,693.4	1,729.2	1,696.2	33.04	52.341	
6,300.0	6,269.2	6,704.4	6,269.2	15.6	44.7	-50.06		1,290.9	-1,693.4	1,729.2	1,695.8	33.39	51.787	
6,400.0	6,369.2	6,804.4	6,369.2	15.8	44.8	-50.06		1,290.9	-1,693.4	1,729.2	1,695.5	33.75	51.242	
6,500.0	6,469.2	6,904.4	6,469.2	16.0	44.9	-50.06		1,290.9	-1,693.4	1,729.2	1,695.1	34.10	50.706	
6,600.0	6,569.2	7,004.4	6,569.2	16.2	44.9	-50.06		1,290.9	-1,693.4	1,729.2	1,694.8	34.46	50.177	
6,700.0	6,669.2	7,104.4	6,669.2	16.4	45.0	-50.06		1,290.9	-1,693.4	1,729.2	1,694.4	34.82	49.658	
6,800.0	6,769.2	7,204.4	6,769.2	16.6	45.1	-50.06		1,290.9	-1,693.4	1,729.2	1,694.1	35.19	49.146	
6,900.0	6,869.2	7,304.4	6,869.2	16.8	45.1	-50.06		1,290.9	-1,693.4	1,729.2	1,693.7	35.55	48.643	
7,000.0	6,969.2	7,404.4	6,969.2	17.0	45.2	-50.06		1,290.9	-1,693.4	1,729.2	1,693.3	35.92	48.147	
7,100.0	7,069.2	7,504.4	7,069.2	17.2	45.3	-50.06		1,290.9	-1,693.4	1,729.2	1,693.0	36.28	47.660	
7,200.0	7,169.2	7,604.4	7,169.2	17.4	45.4	-50.06		1,290.9	-1,693.4	1,729.2	1,692.6	36.65	47.180	
7,300.0	7,269.2	7,704.4	7,269.2	17.6	45.4	-50.06		1,290.9	-1,693.4	1,729.2	1,692.2	37.02	46.708	
7,400.8	7,370.0	7,805.2	7,370.0	17.8	45.5	-50.06		1,290.9	-1,693.4	1,729.2	1,691.8	37.40	46.240	

Company:	BAYSWATER EXPLORATION & PRODUCTION	Local Co-ordinate Reference:	Well Triangle 6-22
Project:	SEC.22-T7N-R65W	TVD Reference:	WELL @ 4848.0ft (Original Well Elev)
Reference Site:	Triangle 4 Pad Sec.22-T7N-R65W	MD Reference:	WELL @ 4848.0ft (Original Well Elev)
Site Error:	0.0ft	North Reference:	True
Reference Well:	Triangle 6-22	Survey Calculation Method:	Minimum Curvature
Well Error:	0.0ft	Output errors are at	2.00 sigma
Reference Wellbore	Wellbore #1	Database:	Landmark
Reference Design:	Plan #1 (10-02-12)	Offset TVD Reference:	Offset Datum

Reference Depths are relative to WELL @ 4848.0ft (Original Well Elev) Coordinates are relative to: Triangle 6-22
Offset Depths are relative to Offset Datum Coordinate System is US State Plane 1983, Colorado Northern Zone
Central Meridian is -105.500000 ° Grid Convergence at Surface is: 0.55°



Company:	BAYSWATER EXPLORATION & PRODUCTION	Local Co-ordinate Reference:	Well Triangle 6-22
Project:	SEC.22-T7N-R65W	TVD Reference:	WELL @ 4848.0ft (Original Well Elev)
Reference Site:	Triangle 4 Pad Sec.22-T7N-R65W	MD Reference:	WELL @ 4848.0ft (Original Well Elev)
Site Error:	0.0ft	North Reference:	True
Reference Well:	Triangle 6-22	Survey Calculation Method:	Minimum Curvature
Well Error:	0.0ft	Output errors are at	2.00 sigma
Reference Wellbore	Wellbore #1	Database:	Landmark
Reference Design:	Plan #1 (10-02-12)	Offset TVD Reference:	Offset Datum

Reference Depths are relative to WELL @ 4848.0ft (Original Well Elev) Coordinates are relative to: Triangle 6-22
Offset Depths are relative to Offset Datum Coordinate System is US State Plane 1983, Colorado Northern Zone
Central Meridian is -105.500000 ° Grid Convergence at Surface is: 0.55°

