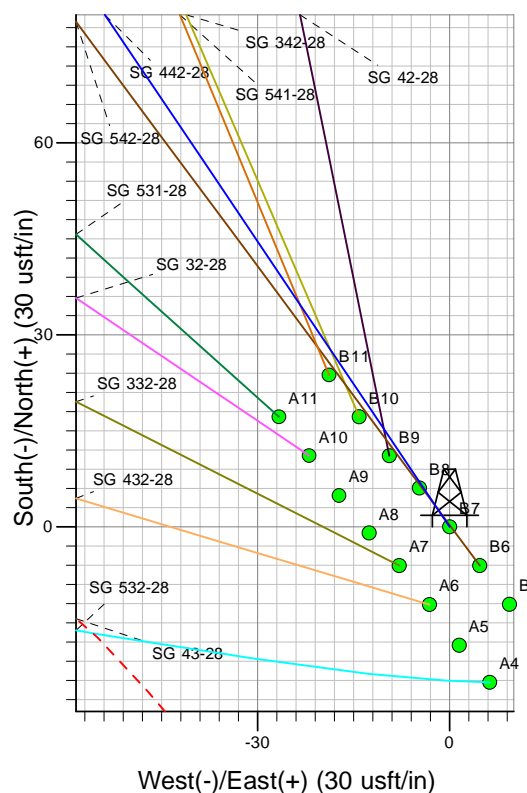
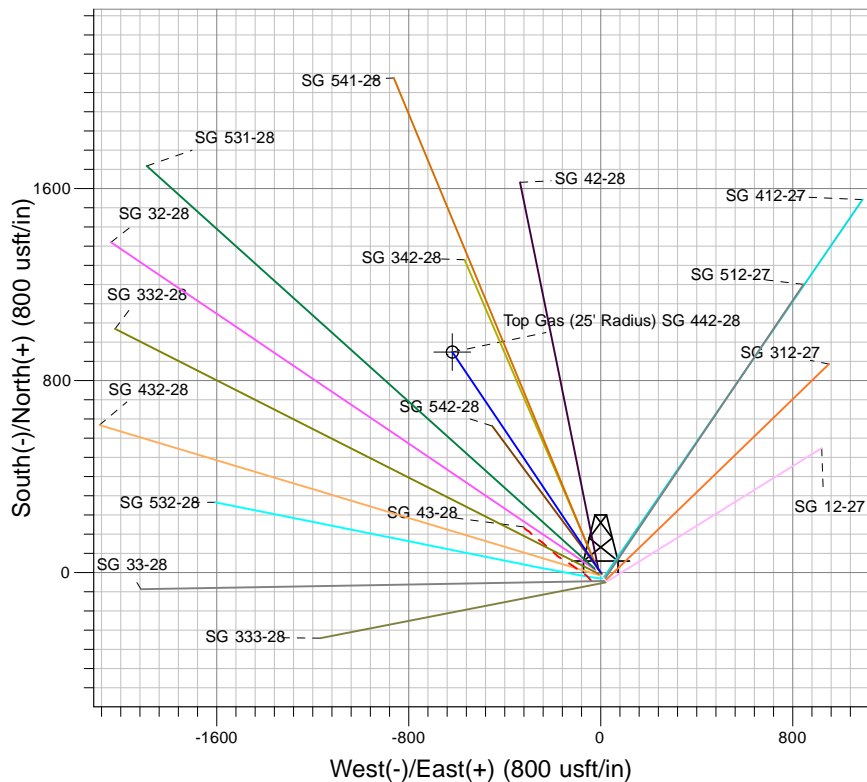
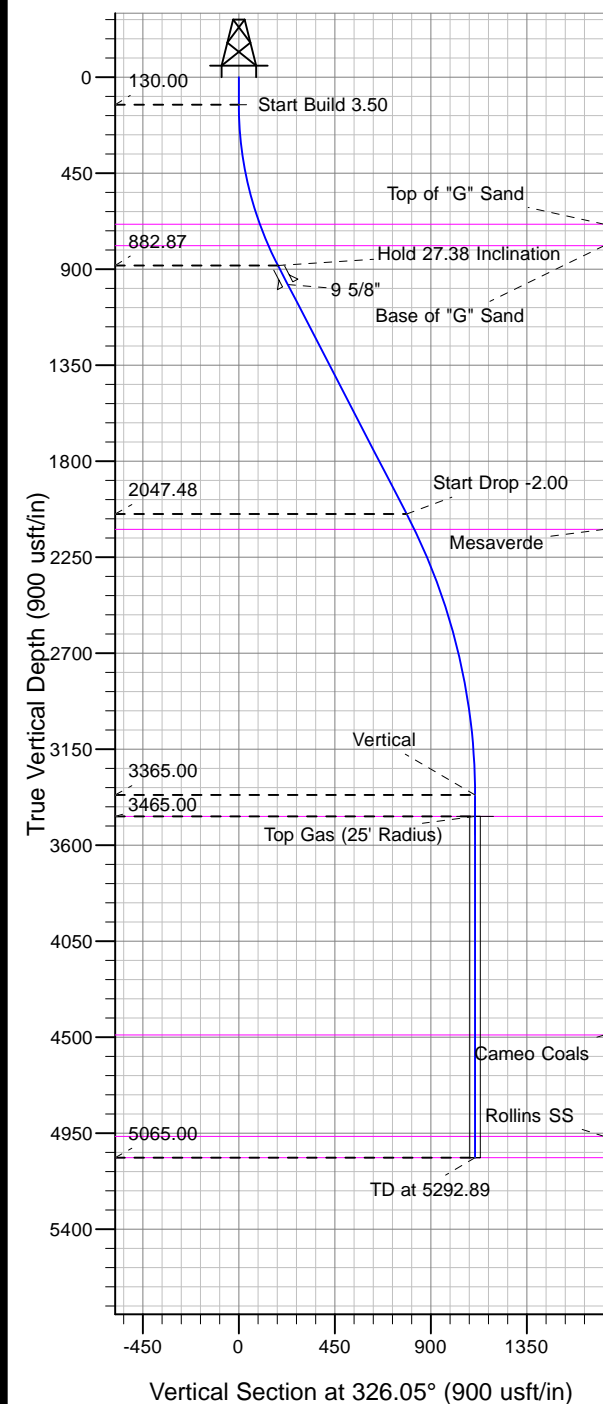




Well Name: SG 442-28  
 Surface Location: SG 43-28 Pad  
 North American Datum 1983 , US State Plane 1983, Colorado Central Zone  
 Ground Elevation: 5119.00

+N/-S	+E/-W	Northing	Easting	Latitude	Longitude	Slot
0.00	0.00	1583872.21	2263456.42	39.40747	-108.10708	B7

KELLY BUSHING @ 5145.00usft (Nabors 573( 26' RKB) kjs)



Project: SG 28-07S-096W  
 Site: SG 43-28 Pad  
 Well: SG 442-28  
 Design #2 16Jan13 kjs

Azimuths to True North  
 Magnetic North: 10.27°

Magnetic Field  
 Strength: 52097.4snT  
 Dip Angle: 65.62°  
 Date: 5/30/2012  
 Model: IGRF2010

#### ANNOTATIONS

MD	Inc	Azi	TVD	+N/-S	+E/-W	Vsect	Departure	Annotation
130.00	0.00	0.00	130.00	0.00	0.00	0.00	0.00	Start Build 3.50
912.31	27.38	326.05	882.87	152.13	-102.42	183.40	183.40	Hold 27.38 Inclination
2223.85	27.38	326.05	2047.48	652.49	-439.26	786.58	786.58	Start Drop -2.00
3592.89	0.00	0.00	3365.00	918.73	-618.50	1107.52	1107.52	Vertical
3692.89	0.00	0.00	3465.00	918.73	-618.50	1107.52	1107.52	Top Gas
5292.89	0.00	0.00	5065.00	918.73	-618.50	1107.52	1107.52	TD at 5292.89