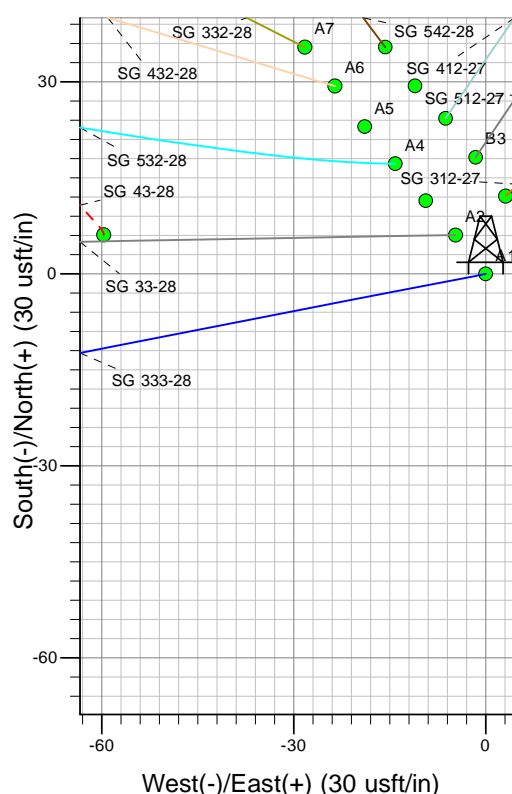
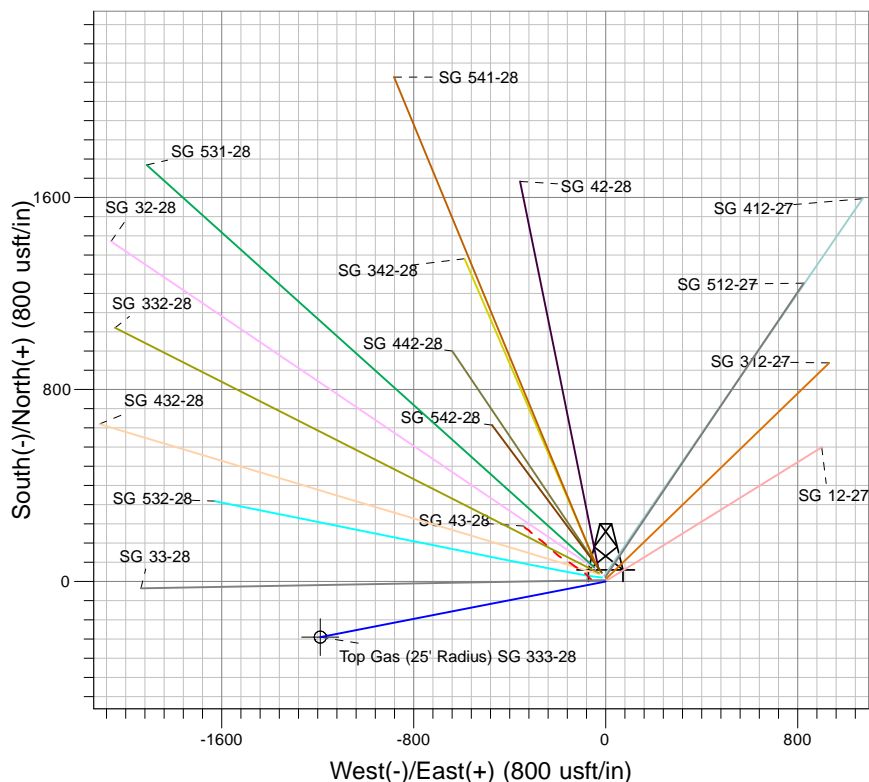
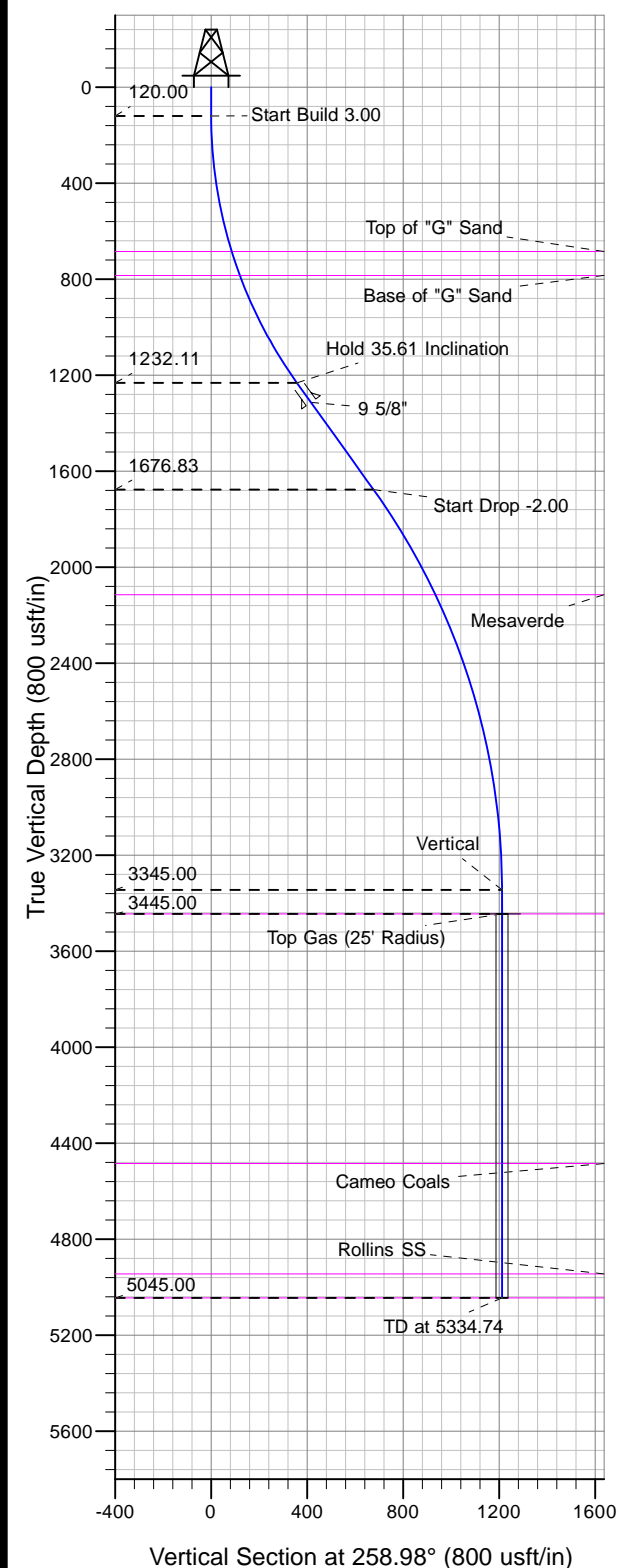




Well Name: SG 333-28
 Surface Location: SG 43-28 Pad
 North American Datum 1983 , US State Plane 1983, Colorado Central Zone
 Ground Elevation: 5119.00

+N/-S	+E/-W	Northing	Easting	Latitude	Longitude	Slot
0.00	0.00	1583830.16	2263475.63	39.40736	-108.10701	A1

KELLY BUSHING @ 5145.00usft (Nabors 573 (26' RKB) kjs)



Project: SG 28-07S-096W
 Site: SG 43-28 Pad
 Well: SG 333-28
 Design #2 16Jan13 kjs



Azimuths to True North
 Magnetic North: 10.27°
 Magnetic Field
 Strength: 52097.4snT
 Dip Angle: 65.62°
 Date: 5/30/2012
 Model: IGRF2010

ANNOTATIONS

MD	Inc	Azi	TVD	+N/-S	+E/-W	VSec	Departure	Annotation
120.00	0.00	0.00	120.00	0.00	0.00	0.00	0.00	Start Build 3.00
1307.08	35.61	258.98	1232.11	-68.31	-350.60	357.19	357.19	Hold 35.61 Inclination
1854.12	35.61	258.98	1676.83	-129.22	-663.26	675.73	675.73	Start Drop -2.00
3634.74	0.00	0.00	3345.00	-231.68	-1189.16	1211.52	1211.52	Vertical
3734.74	0.00	0.00	3445.00	-231.68	-1189.16	1211.52	1211.52	Top Gas
5334.74	0.00	0.00	5045.00	-231.68	-1189.16	1211.52	1211.52	TD at 5334.74