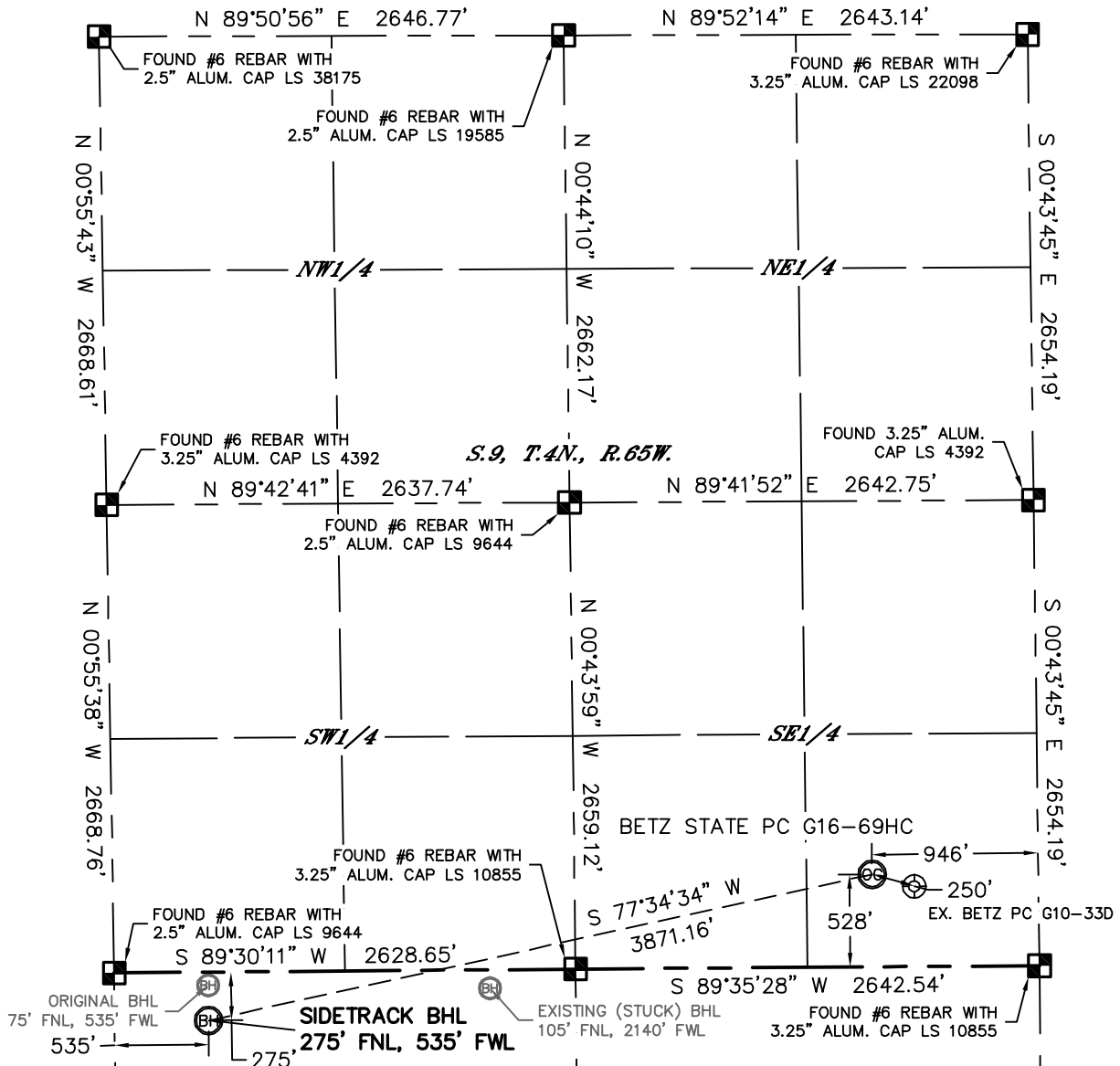


WELL LOCATION CERTIFICATE

SECTION: 9
TOWNSHIP: 4N
RANGE: 65W

THIS MAP DOES NOT REPRESENT A BOUNDARY SURVEY

In accordance with a request from Ryan Hawkins with Noble Energy Inc.

Lat40°, Inc. has determined the surface location of the BETZ STATE PC G16-69HC to be 528' from the SOUTH line and 946' from the EAST line as measured at right angles from the section lines of Section 9, Township 4 North, Range 65 West and the SIDETRACK bottom hole to be 275' from the NORTH line and 535' from the WEST line as measured at right angles from the section lines of Section 16, Township 4 North, Range 65 West of the Sixth Principal Meridian, County of Weld, State of Colorado.

I hereby state that this Well Location Certificate was prepared by me, or under my direct supervision, that the fieldwork was completed on 10/4/11, for and on behalf of Noble Energy Inc. That this is not a Land Survey Plat or an Improvement Survey Plat, and that it is not to be relied upon for establishment of fence, building, or other future improvement lines.

SURFACE LOCATION

LATITUDE: 40.32116°N
LONGITUDE: 104.66200°W
PDOP: 1.6
ELEV: 4718'
1/4, 1/4: SE1/4SE1/4
NEAREST PROPERTY LINE: 375' WEST

SIDETRACK BOTTOM HOLE

LATITUDE: 40.31898°N
LONGITUDE: 104.67558°W

ORIGINAL BOTTOM HOLE

LATITUDE: 40.31952°N
LONGITUDE: 104.67558°W

EXISTING (STUCK) BOTTOM HOLE

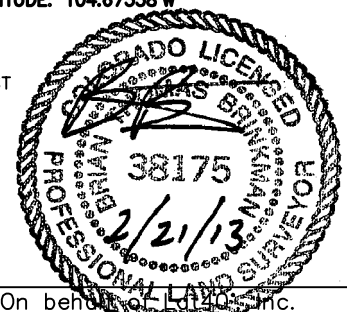
LATITUDE: 40.31944°N
LONGITUDE: 104.66982°W

LEGEND

- = ALIQUOT MONUMENT AS DESCRIBED
○ = CALCULATED POSITION

SHEET 1 OF 2

Brian T. Brinkman—On behalf of Lat40°, Inc.
Colorado Licensed Professional Land Surveyor No. 38175
DATE: rev(2013-02-21)
PROJECT#: 2011275

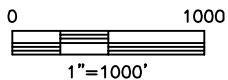


NOTE:

- 1) Bearings shown are Grid Bearings of the Colorado State Plane Coordinate System, North Zone, North American Datum 1983/2007. The lineal dimensions as contained herein are based upon the "U.S. Survey Foot."
- 2) Ground elevations are based on an observed GPS elevation (NAVD 1988 DATUM).
- 3) NEAREST EXISTING WELL: BETZ PC G10-33D, 250'
- 4) IMPROVEMENTS: See LOCATION DRAWING for all visible improvements within 400' of disturbed area.
- 5) SURFACE USE: PASTURE
- 6) INSTRUMENT OPERATOR: KYLE RUTZ

NOTE

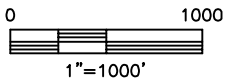
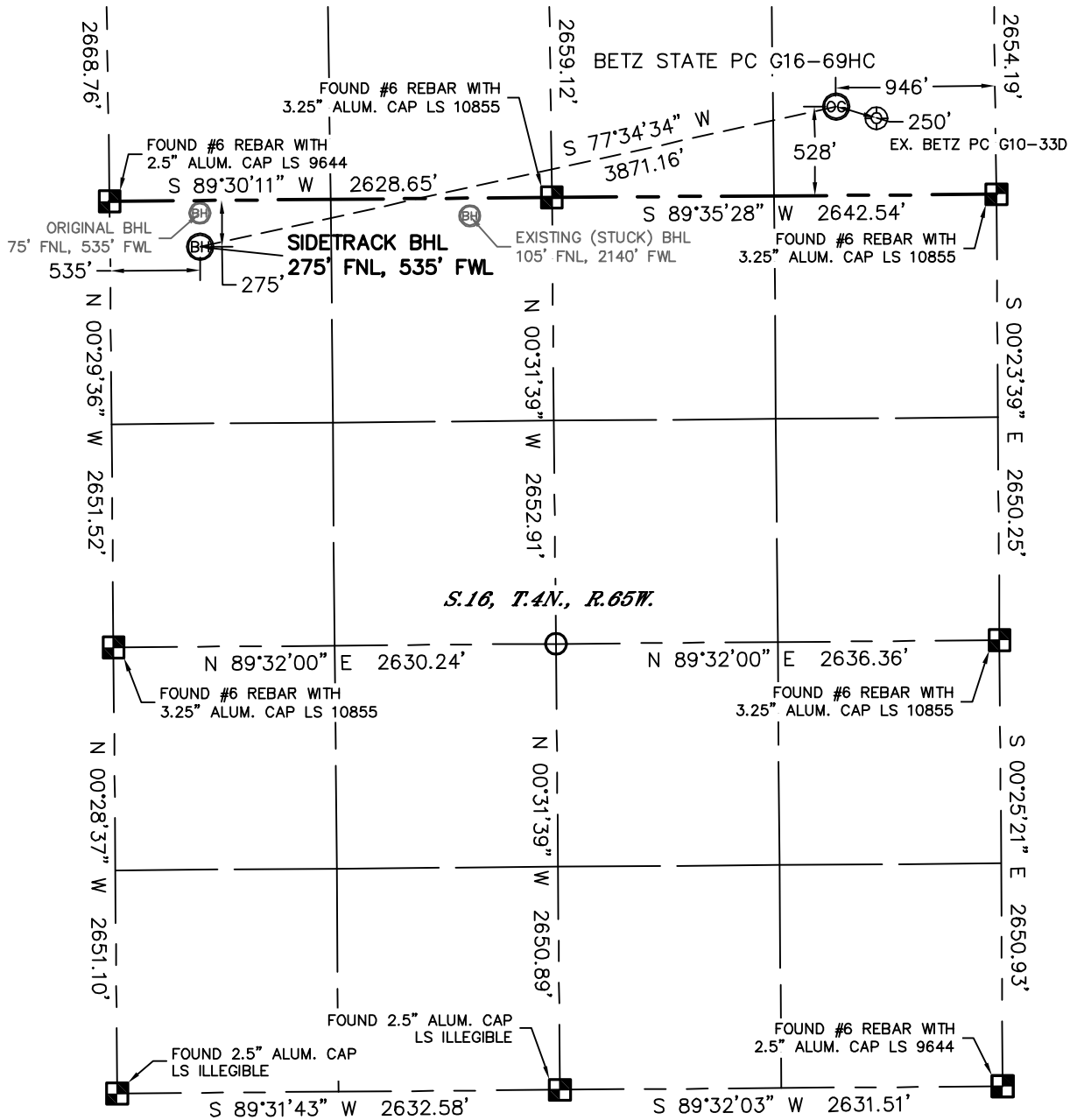
According to Colorado law, you must commence any legal action based upon any defect in this W.L.C. within three years after you discover such defect. In no event, may any action based upon any defect in this survey be commenced more than ten years after the date of the certificate shown hereon. (13-80-105 C.R.S.)



WELL LOCATION CERTIFICATE

THIS MAP DOES NOT REPRESENT A BOUNDARY SURVEY



SECTION: 9
TOWNSHIP: 4N
RANGE: 65W

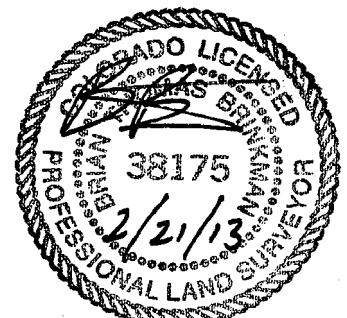


NOTE

According to Colorado law, you must commence any legal action based upon any defect in this W.L.C. within three years after you discover such defect. In no event, may any action based upon any defect in this survey be commenced more than ten years after the date of the certificate shown hereon. (13-80-105 C.R.S.)

LEGEND

-  = ALIQUOT MONUMENT AS DESCRIBED
-  = CALCULATED POSITION



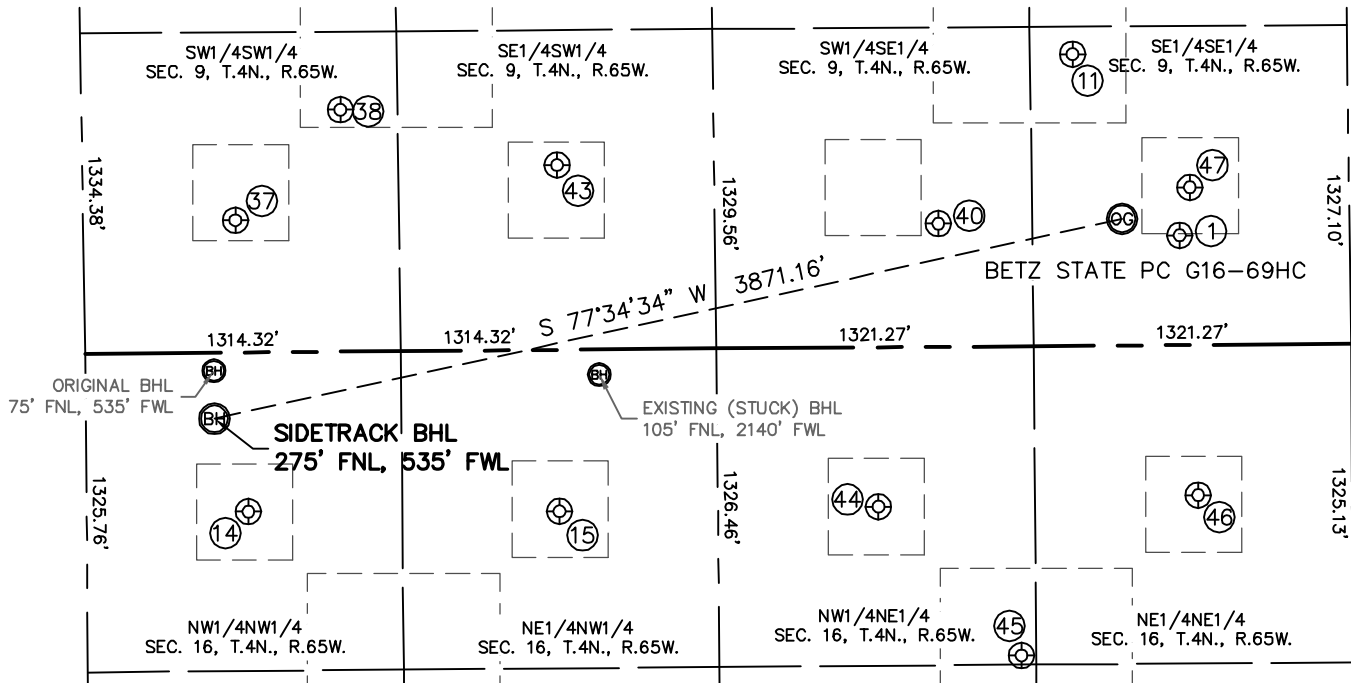
SHEET 2 OF 2

Brian T. Brinkman—On behalf of Lat40°, Inc.
Colorado Licensed Professional Land Surveyor No. 38175
DATE: rev(2013-02-21)
PROJECT#: 2011275

SITE SKETCH

BETZ STATE PC G16-69HC

SECTION: 9
TOWNSHIP: 4N
RANGE: 65W



①

BETZ PC G10-33D
SE1/4SE1/4
457' FSL
707' FEL
LAT-40.32097°N
LONG-104.66114°W
PDOP: 1.5
ELEV: 4717'

⑪

BETZ PC G09-23
SE1/4SE1/4
1214' FSL
1144' FEL
LAT-40.32305°N
LONG-104.66271°W
PDOP: 1.5
ELEV: 4723'

⑭

LENGEL 16-1
NW1/4NW1/4
652' FNL
673' FWL
LAT-40.31791°N
LONG-104.67508°W
PDOP: 1.9
ELEV: 4733'

⑮

HEINLE 16-4
NE1/4NW1/4
672' FNL
1969' FWL
LAT-40.31788°N
LONG-104.67044°W
PDOP: 1.1
ELEV: 4737'

③⑦

KNAUB 9-13G
SW1/4SW1/4
551' FSL
634' FWL
LAT-40.32124°N
LONG-104.67523°W
PDOP: 1.1
ELEV: 4729'

③⑧

REICHERT 9-2J
SW1/4SW1/4
1007' FSL
1079' FWL
LAT-40.32249°N
LONG-104.67365°W
PDOP: 3.9
ELEV: 4731'

④⑩

HARLEY S. RUPERT 2
SW1/4SE1/4
513' FSL
1712' FEL
LAT-40.32113°N
LONG-104.66474°W
PDOP: 1.2
ELEV: 4729'

④③

REICHERT 9-7
SE1/4SW1/4
769' FSL
1978' FWL
LAT-40.32184°N
LONG-104.67042°W
PDOP: 1.7
ELEV: 4728'

④④

MEYER 2
NW1/4NE1/4
664' FNL
1972' FEL
LAT-40.31790°N
LONG-104.66567°W
PDOP: 1.2
ELEV: 4761'

④⑤

MEYER G 16-17
NW1/4NE1/4
1287' FNL
1381' FEL
LAT-40.31619°N
LONG-104.66356°W
PDOP: 1.5
ELEV: 4765'

④⑥

WILLMAN H 41-16
NE1/4NE1/4
625' FNL
641' FEL
LAT-40.31800°N
LONG-104.66090°W
PDOP: 1.4
ELEV: 4739'

④⑦

BETZ 9-44
SE1/4SE1/4
656' FSL
662' FEL
LAT-40.32152°N
LONG-104.66098°W
PDOP: 1.4
ELEV: 4716'

