

# WELL LOCATION PLAT

## T9N, R58W, 6th P.M.

NOBLE ENERGY, INC.

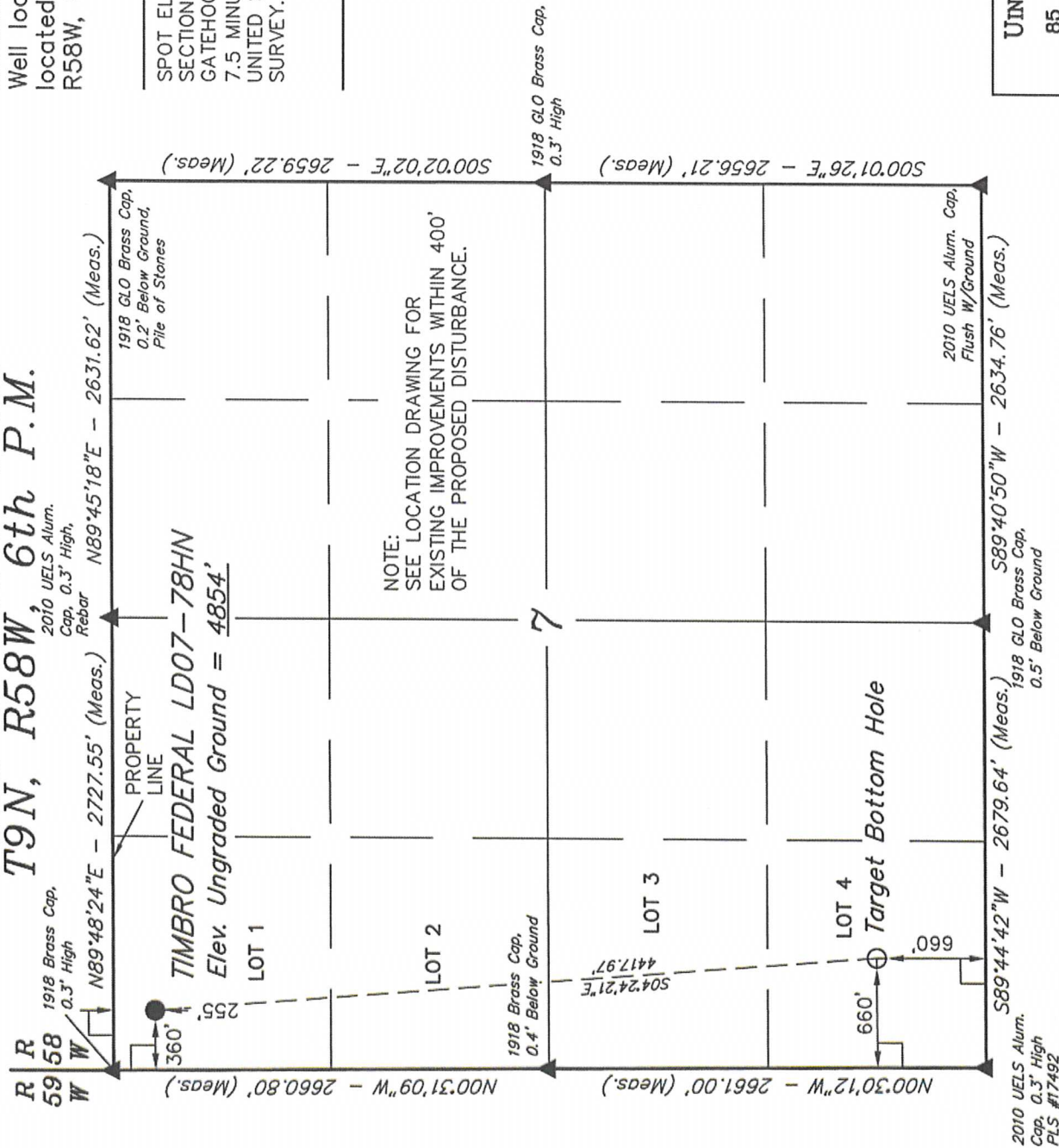
Well location, TIMBRO FEDERAL LD07-78HN, located as shown in LOT 1 of Section 7, T9N, R58W, 6th P.M., Weld County, Colorado.

### BASIS OF ELEVATION

SPOT ELEVATION LOCATED AT THE NORTHEAST CORNER OF SECTION 15, T9N, R58W, 6th P.M. TAKEN FROM THE GATEHOOK SPRING, QUADRANGLE, COLORADO, WELD COUNTY, 7.5 MINUTE QUAD (TOPOGRAPHIC MAP) PUBLISHED BY THE UNITED STATES DEPARTMENT OF THE INTERIOR, GEOLOGICAL SURVEY. SAID ELEVATION IS MARKED AS BEING 4679 FEET.

### BASIS OF BEARINGS

BASIS OF BEARINGS IS A G.P.S. OBSERVATION.



NOTE:  
SEE LOCATION DRAWING FOR  
EXISTING IMPROVEMENTS WITHIN 400'  
OF THE PROPOSED DISTURBANCE.

### FEATURE TABLE

EXISTING FEATURE	DIRECTION	LENGTH
PROPERTY LINE	NORTH	255'

### LEGEND:

- = 90° SYMBOL
- = PROPOSED WELL HEAD.
- ▲ = SECTION CORNERS LOCATED.

NAD 83 (TARGET BOTTOM HOLE)	NAD 83 (SURFACE LOCATION)
LATITUDE = 40°45'36.53" (40.760147)	LATITUDE = 40°46'20.04" (40.772233)
LONGITUDE = 103°54'52.57" (103.914603)	LONGITUDE = 103°54'57.03" (103.915842)

PDOP = 0.9

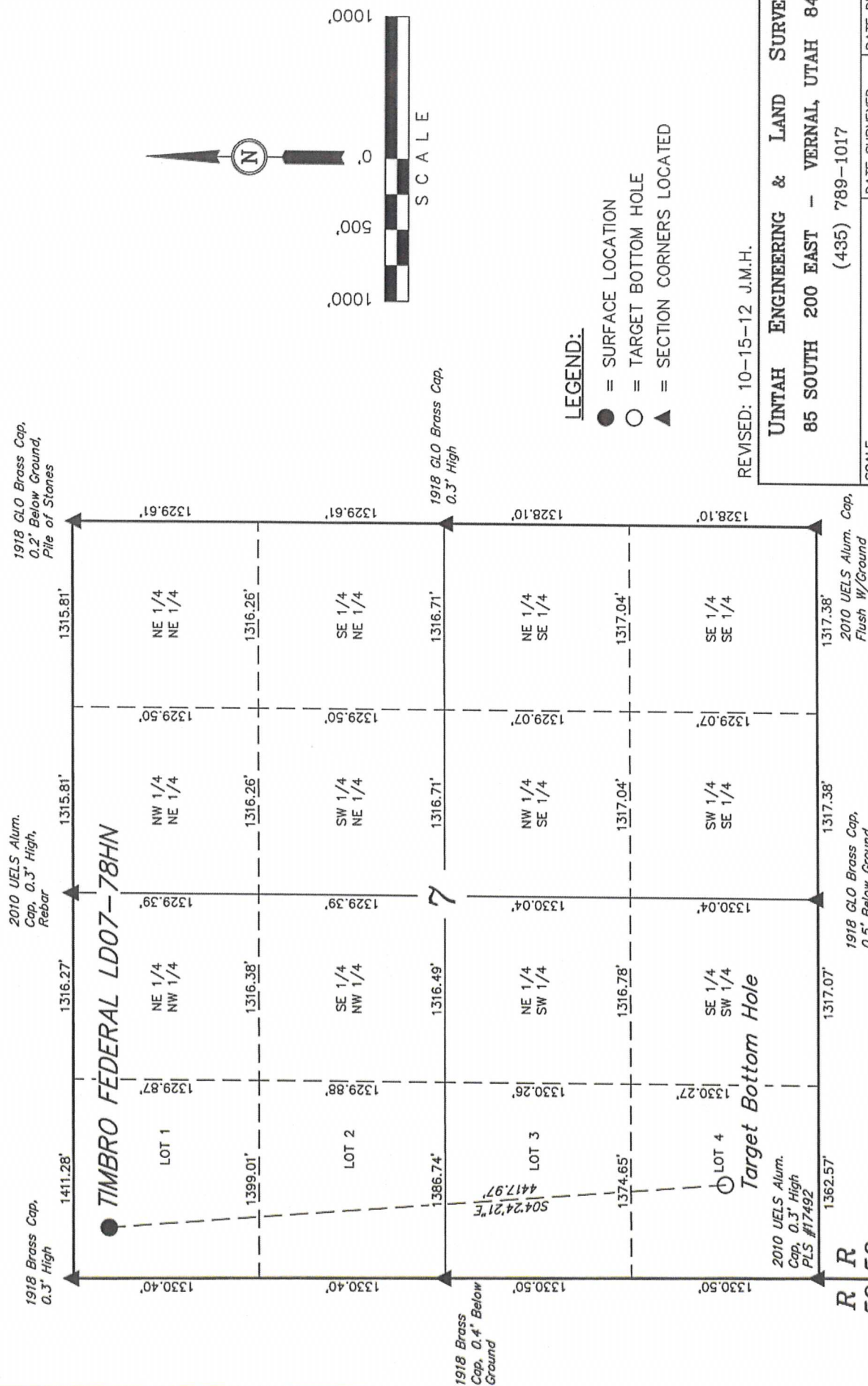
UNTAH ENGINEERING & LAND SURVEYING  
85 SOUTH 200 EAST - VERNAL, UTAH 84078  
(435) 789-1017

SCALE 1" = 1000'	DATE SURVEYED: 09-04-12	DATE DRAWN: 09-25-12
PARTY JEREMY HARRIS C.M. J.M.H.	REFERENCES G.L.O. PLAT	
WEATHER WARM	FILE	
		NOBLE ENERGY, INC.

CERTIFICATE  
THIS IS TO CERTIFY THAT THE ABOVE PLAT WAS PREPARED FROM  
FIELD NOTES OF ACTUAL SURVEYS MADE BY ME OR UNDER MY  
SUPERVISION AND THAT THE SAME ARE TRUE AND CORRECT TO THE  
BEST OF MY KNOWLEDGE AND BELIEF.  
REGISTERED LAND SURVEYOR  
REGISTRATION NO. 17492  
STATE OF COLORADO  
09-26-12

## NOBLE ENERGY, INC.

Well location, TIMBRO FEDERAL LD07-78HN, located as shown in LOT 1 of Section 7, T9N, R58W, 6th P.M., Weld County, Colorado.



REVISÉ: 10-15-12 J.M.H.

UTAH ENGINEERING & LAND SURVEYING  
85 SOUTH 200 EAST - VERNAL, UTAH 84078

SCALE	1" = 1000'	DATE SURVEYED:	DATE DRAWN:
PARTY	JEREMY HARRIS C.M.	09-04-12	10-03-12
WEATHER	WARM	REFERENCES	
		G.L.O. PLAT	
		FILE	
			NOBLE ENERGY INC.