



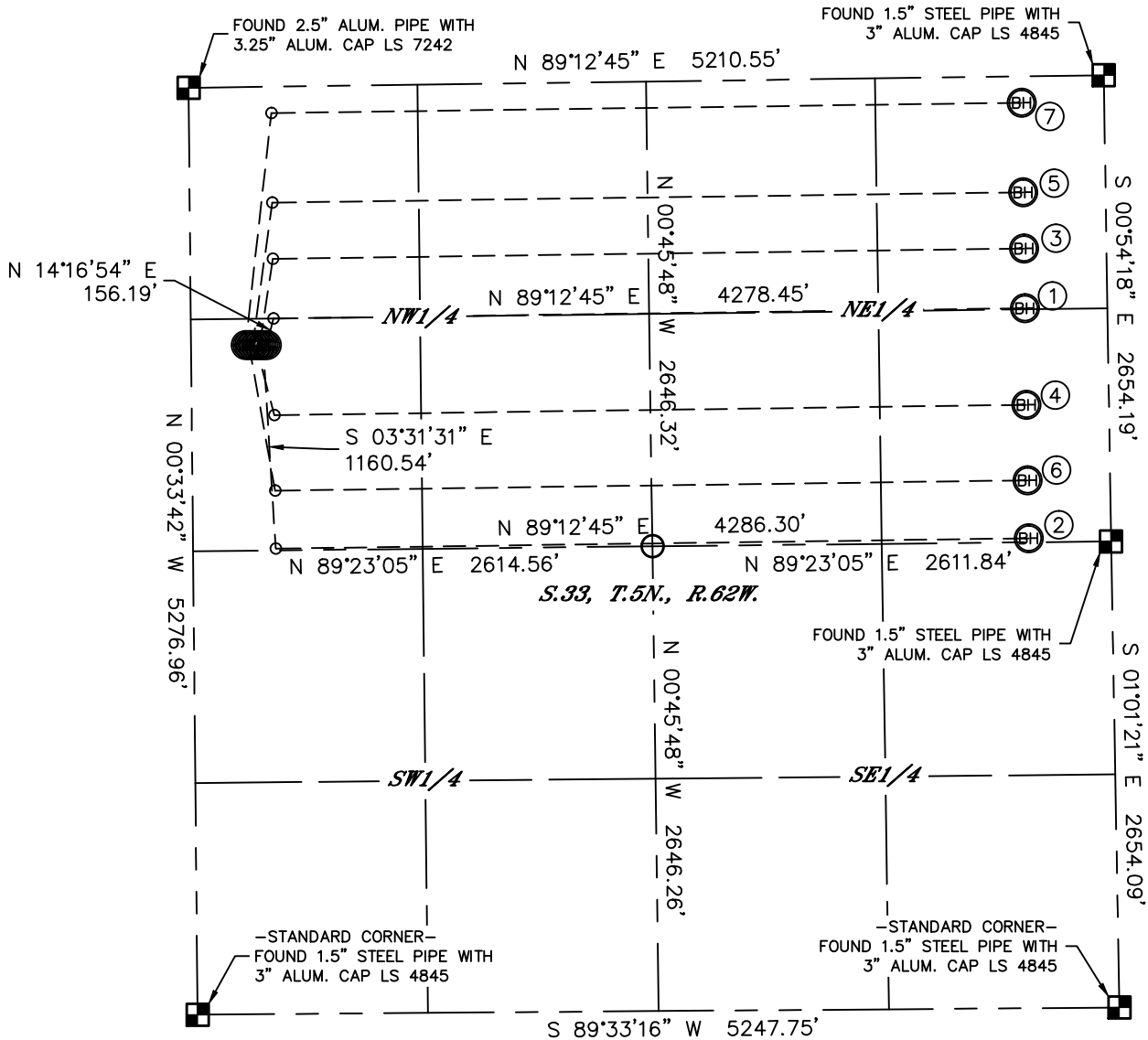
Lat40°, Inc. 1635 Foxtrail Drive, Suite 325 Loveland, CO 970-776-3321

MULTI-WELL PLAN

ANTELOPE B-33 PAD

THIS MAP DOES NOT REPRESENT A BOUNDARY SURVEY

SECTION: 33
TOWNSHIP: 5N
RANGE: 62W



①

SURFACE LOCATION
ANTELOPE B-V-33HNB
1471' FNL
430' FWL
LAT: 40.35939°N
LONG: 104.33672°W

②

SURFACE LOCATION
ANTELOPE C-W-33HNB
1471' FNL
410' FWL
LAT: 40.35939°N
LONG: 104.33679°W

③

SURFACE LOCATION
ANTELOPE A3
1471' FNL
390' FWL
LAT: 40.35939°N
LONG: 104.33686°W

④

SURFACE LOCATION
ANTELOPE A4
1471' FNL
370' FWL
LAT: 40.35939°N
LONG: 104.33694°W

⑤

SURFACE LOCATION
ANTELOPE A5
1471' FNL
350' FWL
LAT: 40.35939°N
LONG: 104.33701°W

⑥

SURFACE LOCATION
ANTELOPE A6
1470' FNL
330' FWL
LAT: 40.35939°N
LONG: 104.33708°W

⑦

SURFACE LOCATION
ANTELOPE A7
1470' FNL
310' FWL
LAT: 40.35939°N
LONG: 104.33715°W

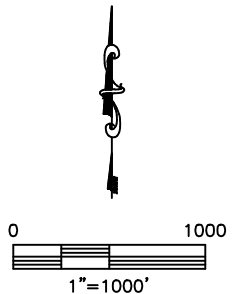
LEGEND



= ALIQUOT MONUMENT AS DESCRIBED



= CALCULATED POSITION



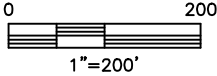
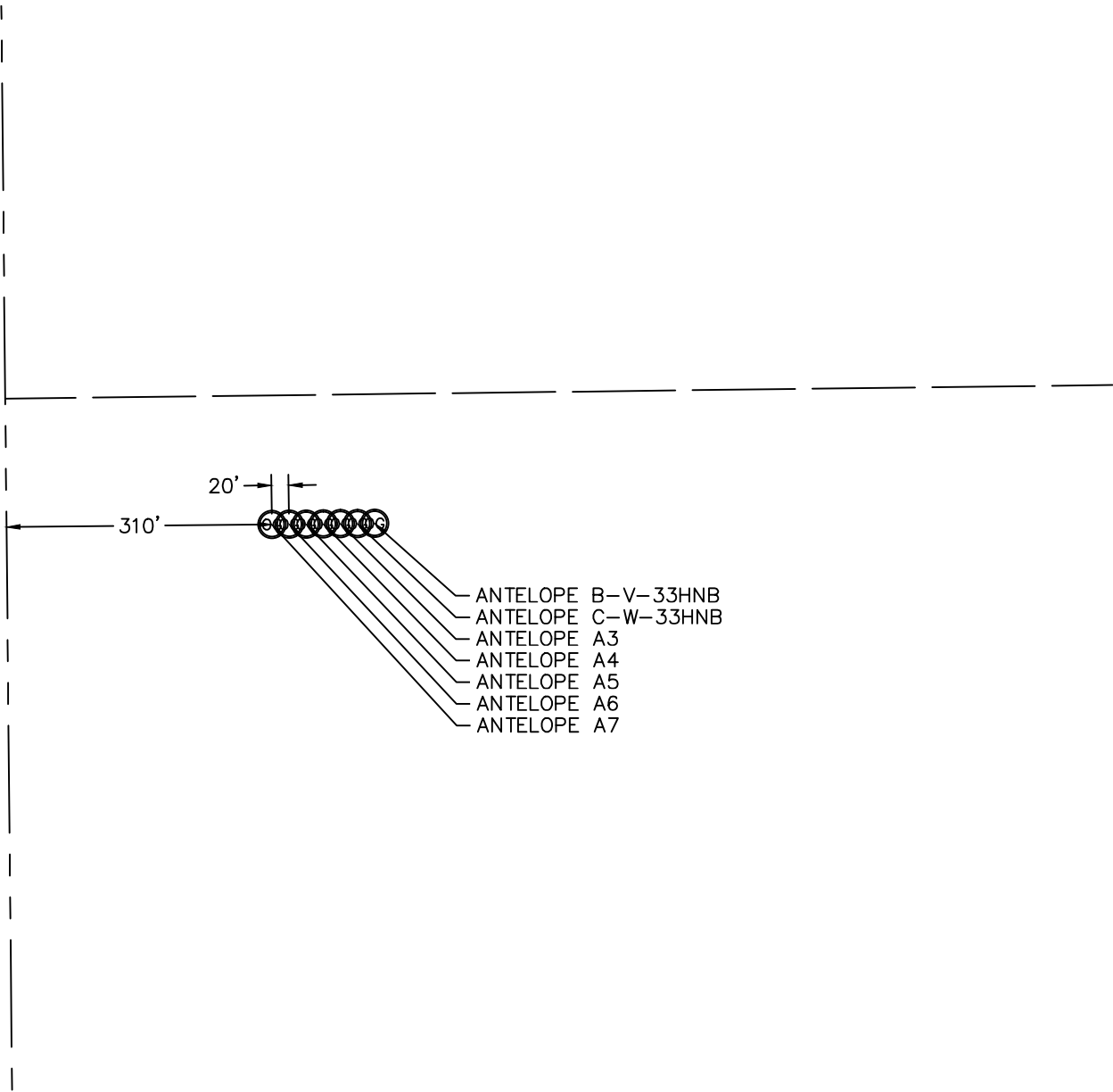
DATE: 10/30/2012
PROJECT#: 2012071



Lat40°, Inc. 1635 Foxtrail Drive, Suite 325 Loveland, CO 970-776-3321

MULTI-WELL PLAN
ANTELOPE B-33 PAD

SECTION: 33
TOWNSHIP: 5N
RANGE: 62W



DATE: 10/30/2012
PROJECT#: 2012071