

HALLIBURTON

CHEVRON - MID-CONTINENT EBIZ

Fee 162Y
PORFIDO
Harris County , Texas

Cement Surface Casing
07-Dec-2012

Job Site Documents

The Road to Excellence Starts with Safety

Sold To #: 338668		Ship To #: 2967640		Quote #:		Sales Order #: 900051401	
Customer: CHEVRON - MID-CONTINENT EBIZ				Customer Rep: Garza, Travis			
Well Name: Fee			Well #: 162Y		API/UWI #: 05-103-11945		
Field:		City (SAP): RIO BLANCO		County/Parish: Harris		State: Texas	
Legal Description: Section 28 Township 2N Range 102W							
Lat: N 40.12 deg. OR N 40 deg. 7 min. 11.1 secs.				Long: W 108.844 deg. OR W -109 deg. 9 min. 21.539 secs.			
Contractor: NABORS			Rig/Platform Name/Num: NABORS M-11				
Job Purpose: Cement Surface Casing							
Well Type: Development Well			Job Type: Cement Surface Casing				
Sales Person: GROFF, THEODORE			Srv Supervisor: ASHBY, ANDREW			MBU ID Emp #: 450544	

Job Personnel

HES Emp Name	Exp Hrs	Emp #	HES Emp Name	Exp Hrs	Emp #	HES Emp Name	Exp Hrs	Emp #
ASHBY, ANDREW A	11.0	450544	FUCHS, ANDREW Peter	11.0	489821	GAMBLES, BRAYDEN Kade	11.0	469413
GILES, JAMES W	11.0	522124	NELSON, JACOB Hyrum	11.0	529661	STUMPF, THOMAS N	9.0	482818

Equipment

HES Unit #	Distance-1 way	HES Unit #	Distance-1 way	HES Unit #	Distance-1 way	HES Unit #	Distance-1 way
10948685	45 mile	11071474	45 mile	11235839	45 mile	11360879	45 mile
11410664	45 mile	11512092	45 mile	11526494	45 mile	D0776	45 mile

Job Hours

Date	On Location Hours	Operating Hours	Date	On Location Hours	Operating Hours	Date	On Location Hours	Operating Hours
06 Dec 2012	9	2	07 Dec 2012	2	0			
TOTAL		11 hrs on location & 2 hrs operating		Total is the sum of each column separately				

Job

Formation Name	Formation Depth (MD)	Top	Bottom	Form Type	Job depth MD	Job Depth TVD	Water Depth	Perforation Depth (MD)	From	To
				BHST	2026. ft					

Job Times

Date	Time	Time Zone
06 - Dec - 2012	10:00	MST
06 - Dec - 2012	15:00	MST
06 - Dec - 2012	22:00	MST
07 - Dec - 2012	00:00	GMT
07 - Dec - 2012	02:00	MST

Well Data

Description	New / Used	Max pressure psig	Size in	ID in	Weight lbm/ft	Thread	Grade	Top MD ft	Bottom MD ft	Top TVD ft	Bottom TVD ft
12-1/4" Hole				12.25				102.	2022.	102.	2022.
9-5/8" Casing	New		9.625	8.921	36.		H-40	0.	2011.	.	2011.
Conductor Casing	Unknown		16.	15.562	84.			0.	102.		

Sales/Rental/3rd Party (HES)

Description	Qty	Qty uom	Depth	Supplier
SUGAR - GRANULATED	80	LB		
PLUG,CMTG,TOP,9 5/8,HWE,8.16 MIN/9.06 MA	1	EA		

Tools and Accessories

Type	Size	Qty	Make	Depth	Type	Size	Qty	Make	Depth	Type	Size	Qty	Make
Guide Shoe		0			Packer		0			Top Plug		1	HES
Float Shoe		1			Bridge Plug		0			Bottom Plug		0	
Float Collar		1			Retainer		0			SSR plug set		0	
Insert Float		0								Plug Container		1	HES
Stage Tool		0								Centralizers		24	

Miscellaneous Materials

Gelling Agt	Conc	Surfactant	Conc	Acid Type	Qty	Conc	%
Treatment Fld	Conc	Inhibitor	Conc	Sand Type	Size	Qty	

Fluid Data									
Stage/Plug #: 1									
Fluid #	Stage Type	Fluid Name	Qty	Qty uom	Mixing Density lbm/gal	Yield ft ³ /sk	Mix Fluid Gal/sk	Rate bbl/min	Total Mix Fluid Gal/sk
1	MUD FLUSH III	MUD FLUSH III - SBM (528788)	30.00	bbl	8.4	.0	.0	.0	
2	Tuned Light	TUNED LIGHT (TM) SYSTEM (452984)	335.0	sacks	10.5	2.89	14.51		14.51
	1 lbm	GRANULITE TR 1/4, 50 LB SK (100064073)							
	0.25 lbm	POLY-E-FLAKE (101216940)							
	3 lbm	KOL-SEAL, 50 LB BAG (100064232)							
	14.51 Gal	FRESH WATER							
3	VariCem	VARICEM (TM) CEMENT (452009)	180.0	sacks	12.8	2.01	10.84		10.84
	3 lbm	KOL-SEAL, 50 LB BAG (100064232)							
	0.25 lbm	POLY-E-FLAKE (101216940)							
	1 lbm	GRANULITE TR 1/4, 50 LB SK (100064073)							
	10.84 Gal	FRESH WATER							
4	Displacement		152.00	bbl	8.3	.0	.0	.0	
5	Top Out Cement	HALCEM (TM) SYSTEM (452986)	0.0	sacks	15.8	1.15	5.0		5.0
	5 Gal	FRESH WATER							
Calculated Values		Pressures		Volumes					
Displacement	152.3	Shut In: Instant		Lost Returns	0	Cement Slurry	237	Pad	
Top Of Cement	Surface	5 Min		Cement Returns	100	Actual Displacement	153	Treatment	
Frac Gradient		15 Min		Spacers	30	Load and Breakdown		Total Job	
Rates									
Circulating	8 bpm	Mixing		5 bpm	Displacement	6 bpm	Avg. Job		6 bpm
Cement Left In Pipe	Amount	90 ft	Reason	Shoe Joint					
Frac Ring # 1 @	ID	Frac ring # 2 @	ID	Frac Ring # 3 @	ID	Frac Ring # 4 @	ID		
The Information Stated Herein Is Correct				Customer Representative Signature					

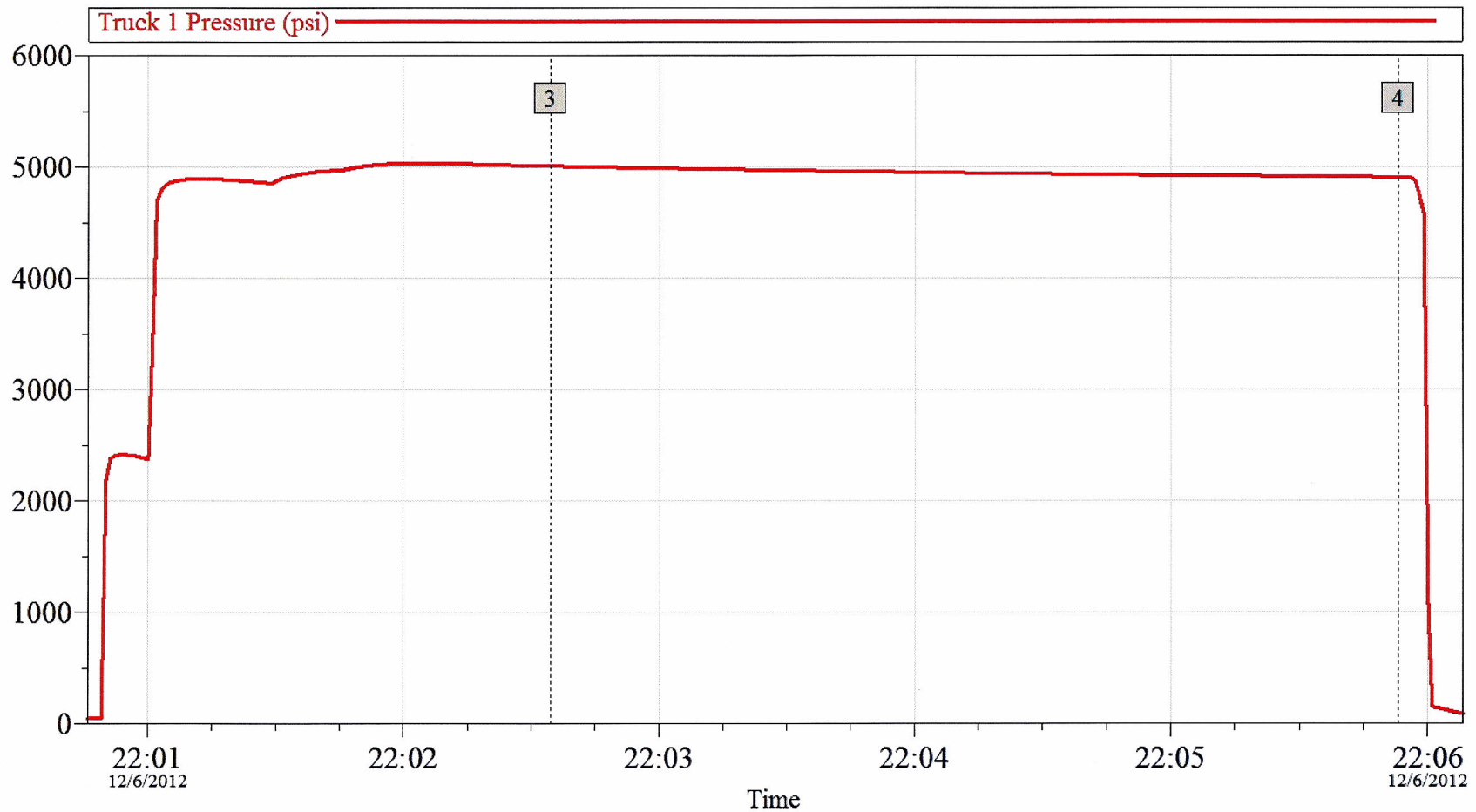
The Road to Excellence Starts with Safety

Sold To #: 338668	Ship To #: 2967640	Quote #:	Sales Order #: 900051401
Customer: CHEVRON - MID-CONTINENT EBIZ		Customer Rep: Garza, Travis	
Well Name: Fee	Well #: 162Y	API/UWI #: 05-103-11945	
Field:	City (SAP): RIO BLANCO	County/Parish: Harris	State: Texas
Legal Description: Section 28 Township 2N Range 102W			
Lat: N 40.12 deg. OR N 40 deg. 7 min. 11.1 secs.		Long: W 108.844 deg. OR W -109 deg. 9 min. 21.539 secs.	
Contractor: NABORS		Rig/Platform Name/Num: NABORS M-11	
Job Purpose: Cement Surface Casing			Ticket Amount:
Well Type: Development Well		Job Type: Cement Surface Casing	
Sales Person: GROFF, THEODORE		Srvc Supervisor: ASHBY, ANDREW	MBU ID Emp #: 450544

Activity Description	Date/Time	Cht #	Rate bbl/min	Volume bbl		Pressure psig		Comments
				Stage	Total	Tubing	Casing	
Call Out	12/06/2012 10:00							Crew Called out for Job. Requested on location @ 14:00.
Pre-Convoy Safety Meeting	12/06/2012 13:30							Met w/crew to discuss safety and hazards of travel to location
Depart from Service Center or Other Site	12/06/2012 14:00							Entered into Journey Management.
Arrive At Loc	12/06/2012 15:00							Ended Journey Management. Just started running casing (approx 300 ft of 2000 ft)
Assessment Of Location Safety Meeting	12/06/2012 15:15							Met w/crew to discuss hazards of site, location of materials and safety precautions.
Other	12/06/2012 15:30							Spot Equipment
Pre-Rig Up Safety Meeting	12/06/2012 15:50							Met w/crew to discuss the best way to rig up, safety and hazards involved.
Rig-Up Equipment	12/06/2012 16:00							Rig up Ground & Standpipe
Pre-Job Safety Meeting	12/06/2012 21:00							Met w/Rig Crew, Co. Rep, and our crew to discuss job procedures, contingencies, and safety measures.
Rig-Up Equipment	12/06/2012 21:30							Rig-up the rig floor.
Other	12/06/2012 21:58		2	3			100.0	Fill Lines with fresh water for pressure test
Test Lines	12/06/2012 22:02						5009.0	Pressure test iron (5000 psi) - Lost 100 psi over 3 min.

Activity Description	Date/Time	Cht #	Rate bbl/min	Volume bbl		Pressure psig		Comments
				Stage	Total	Tubing	Casing	
Pump Spacer	12/06/2012 22:07		5	30			120.0	2 sks Mud Flush III
Shutdown	12/06/2012 22:14							Shutdown / Mix Cement
Pump Lead Cement	12/06/2012 22:22		5	176			202.0	335 sks Tuned Light Lead @ 10.5 lbm/gal, 2.96 cuft/sk, 14.20 gal/sk
Other	12/06/2012 22:28							Marsh Funnel test - 250 mL = 21 Seconds
Other	12/06/2012 22:40							Mud Scale 10.3 lb/gal
Other	12/06/2012 22:45							Marsh Funnel test - 250 mL = 17 Seconds
Pump Tail Cement	12/06/2012 23:05		4.5	64			194.0	180 sks VariCem Tail @ 12.8 lbm/gal, 2.01 cuft/sk, 10.84 gal/sk
Shutdown	12/06/2012 23:21							Shutdown / drop plug
Drop Top Plug	12/06/2012 23:25							Drop top plug, Co. Rep. Witnessed.
Pump Displacement	12/06/2012 23:27		6	152.3				Water displacement - wash up on top of the plug per Co. Rep.
Other	12/06/2012 23:30		6		20		205.0	Mud Flush to Surface
Other	12/06/2012 23:37				50		520.0	Cement to Surface (100 bbls)
Slow Rate	12/06/2012 23:53		3		140		411.0	Slow displacement rate to bump plug.
Bump Plug	12/06/2012 23:57		3				782.0	Bump plug 500 psi over final circulating pressure (485 psi). per Co. Rep.
Check Floats	12/07/2012 00:01						937.0	Held for 3 min, check floats per co. rep. Floats held - 1 bbl back.
Post-Job Safety Meeting (Pre Rig-Down)	12/07/2012 00:10							Met w/crew to discuss rigging down safely.
Rig-Down Equipment	12/07/2012 00:20							Blow down field bin & Rig everything down.
Pre-Convoy Safety Meeting	12/07/2012 01:50							Met w/crew to discuss fit-for-duty, safety and hazards of travel back.
Depart Location for Service Center or Other Site	12/07/2012 02:00							Entered into Journey Management.
Other	12/07/2012 02:00							Thanks for using Halliburton!!!

Chevron - Fee# 162Y - Surface Pressure Test



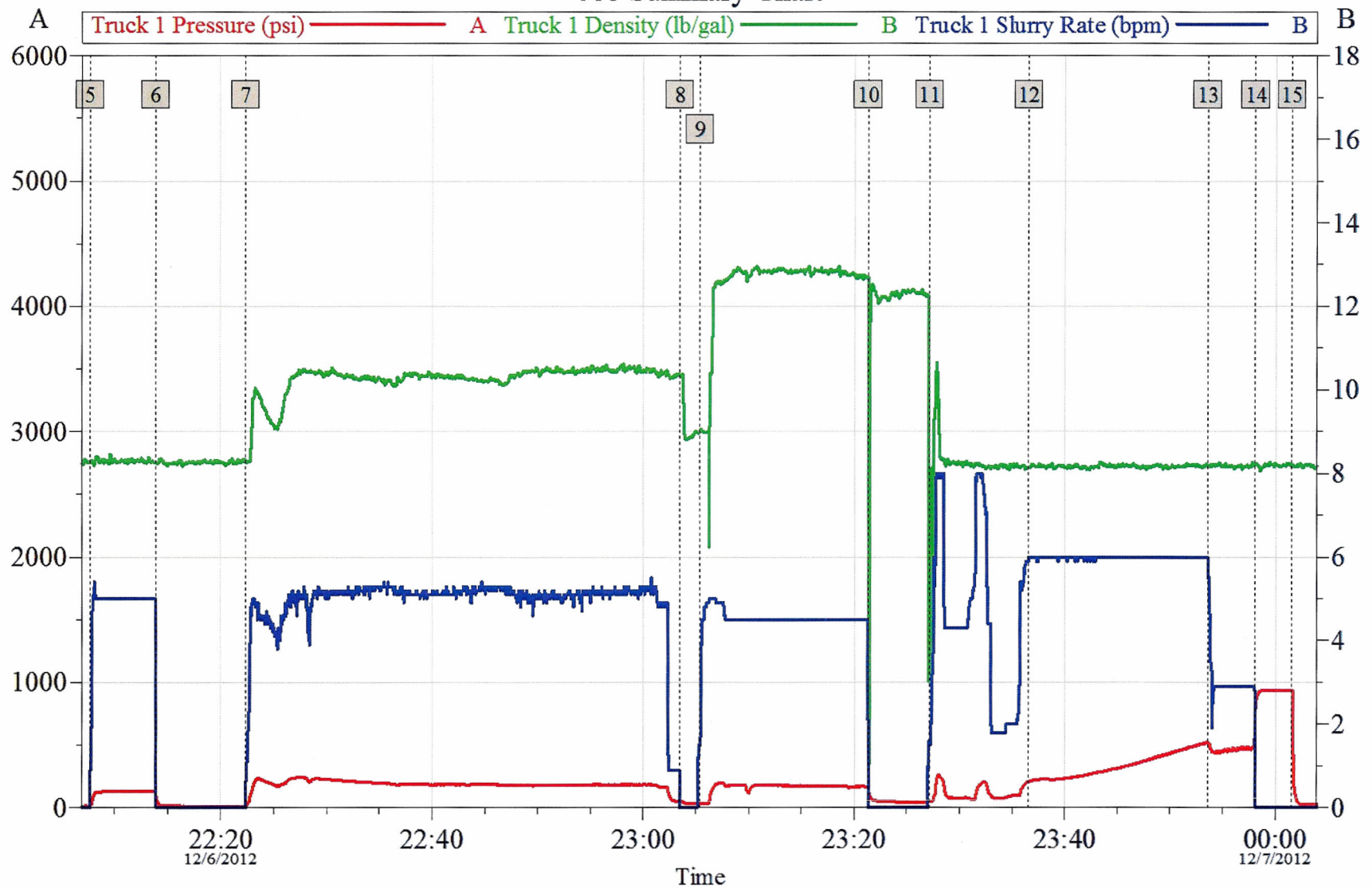
Global Event Log			
Intersection		PSI	Intersection
3	Start Pressure Test 22:02:35	5009	4 End Pressure Test 22:05:53

Customer: Chevron	Job Date: 06-Dec-2012	Sales Order #: 900051401
Job Description: 9.625" Surface	UWI: 05-103-11945	Elite #: 11512092
Service Supervisor: Andrew Ashby	Service Operator: Brayden Gambles	Service Leader: n/a

OptiCem v6.4.9
07-Dec-12 02:11

Chevron - Fee# 162Y - Surface

Job Summary Chart



Customer: Chevron
 Job Description: 9.625" Surface
 Service Supervisor: Andrew Ashby

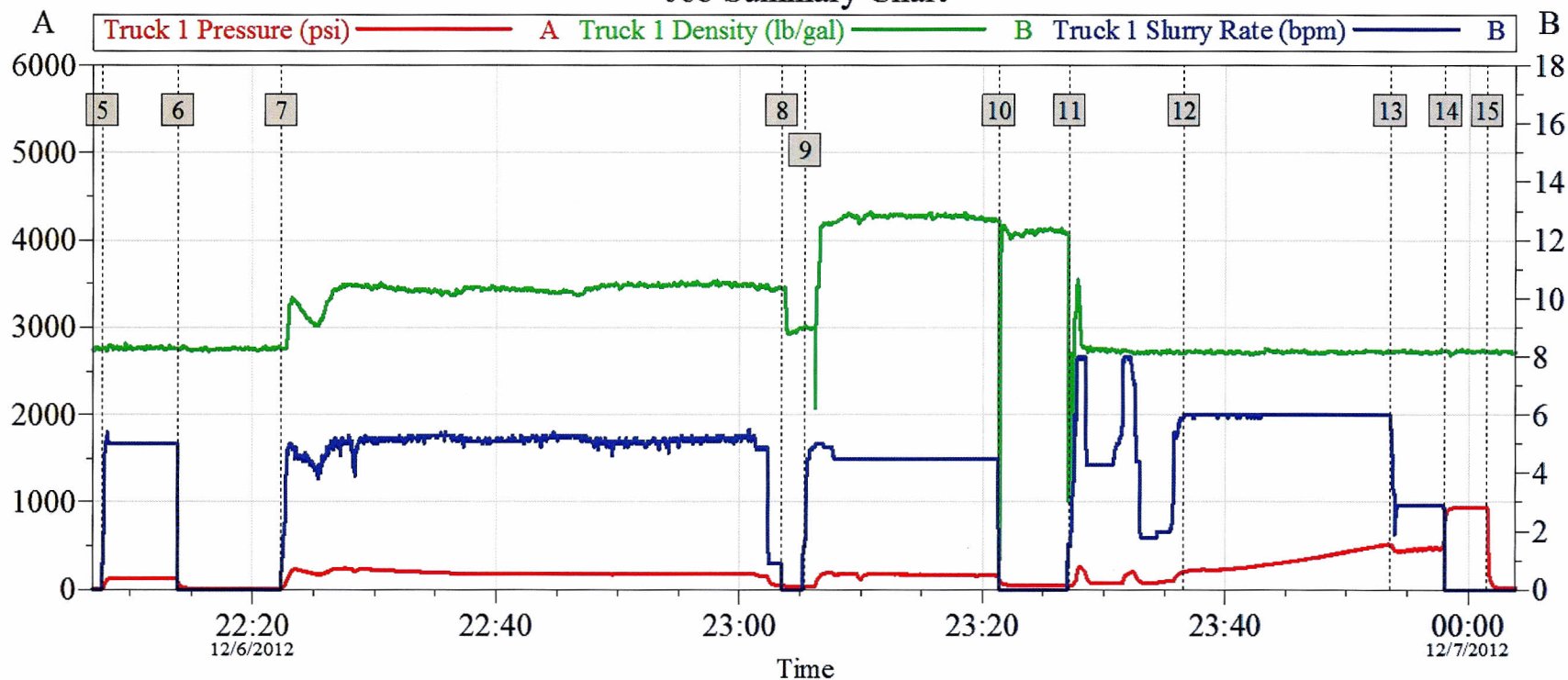
Job Date: 06-Dec-2012
 UWI: 05-103-11945
 Service Operator: Brayden Gambles

Sales Order #: 900051401
 Elite #: 11512092
 Service Leader: n/a

OptiCem v6.4.9
 07-Dec-12 02:13

Chevron - Fee# 162Y - Surface

Job Summary Chart



Global Event Log

5	Pump Mud Flush	12/6/2012 22:07:41	6	Shutdown / Mix Cement	12/6/2012 22:13:53
7	Pump Lead Cement	12/6/2012 22:22:18	8	Shutdown / Mix Cmt	12/6/2012 23:03:30
9	Pump Tail Cement	12/6/2012 23:05:22	10	Shut Down	12/6/2012 23:21:19
11	Pump Displacement	12/6/2012 23:27:10	12	Displ Reached Cmt	12/6/2012 23:36:34
13	Slow Rate	12/6/2012 23:53:31	14	Bump Plug	12/6/2012 23:58:04
15	Check Floats	12/7/2012 00:01:34			

Customer: Chevron
Job Description: 9.625" Surface
Service Supervisor: Andrew Ashby

Job Date: 06-Dec-2012
UWI: 05-103-11945
Service Operator: Brayden Gambles

Sales Order #: 900051401
Elite #: 11512092
Service Leader: n/a

OptiCem v6.4.9
07-Dec-12 02:13