

PETROLEUM DEVELOPMENT CORP Weld County CO

Well Name: Wells Ranch 34F-402

Surface Location: Wells Ranch NW-34 Pad Sec.34-T6N-R63W
North American Datum 1983 , US State Plane 1983 Colorado Northern Zone

Ground Elevation: 4804.0

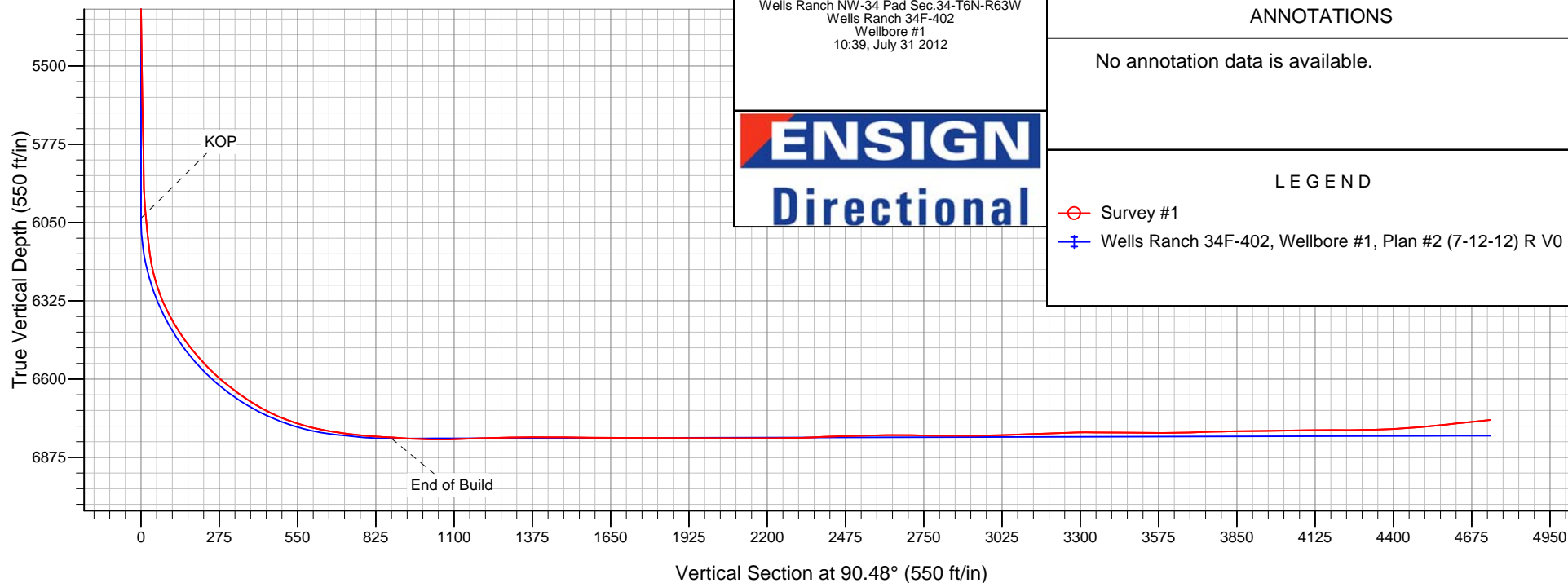
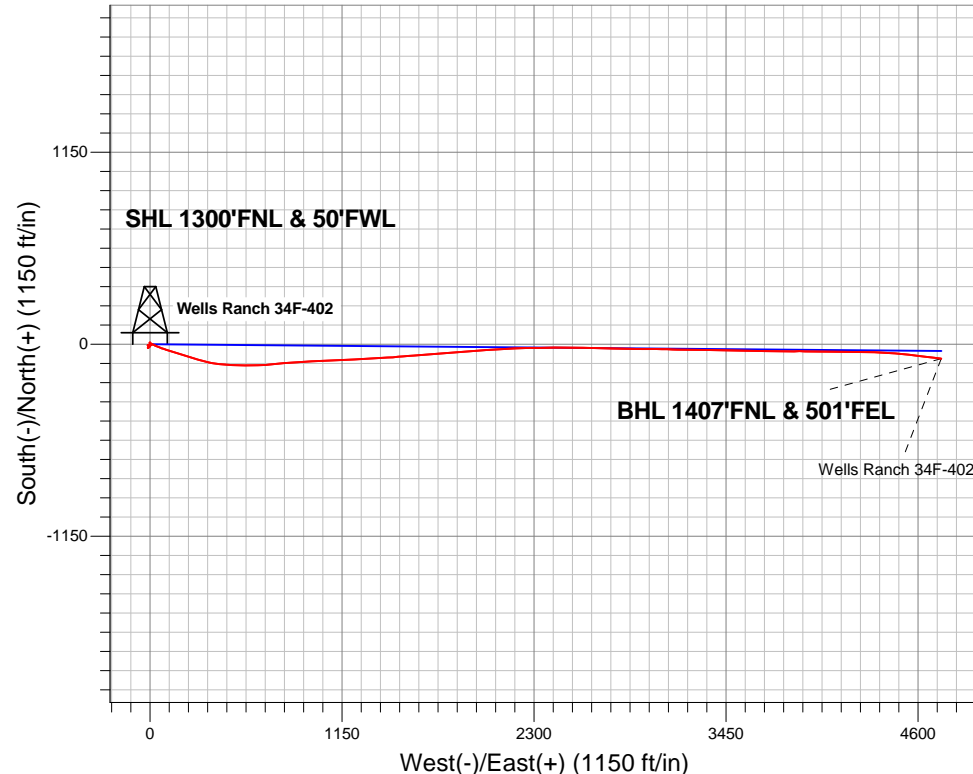
+N/-S	+E/-W	Northing	Easting	Latitude	Longitude	Slot
0.0	0.0	1407332.24	3297092.61	40.446620	-104.432520	

Original Well Elev WELL @ 4819.0ft (Original Well Elev)

FINAL SURVEY

Projected Bottom Hole Location
11206' MD 6743' TVD 86' S & 4739' E of SHL

96.00 degree Incl @ 97.00 degree AZM





PETROLEUM DEVELOPMENT CORP Weld County CO

SEC.34-T6N-R63W

Wells Ranch NW-34 Pad Sec.34-T6N-R63W

Wells Ranch 34F-402

Wellbore #1

Survey: Survey #1

Standard Survey Report

31 July, 2012

Company:	PETROLEUM DEVELOPMENT CORP Weld County CO	Local Co-ordinate Reference:	Well Wells Ranch 34F-402
Project:	SEC.34-T6N-R63W	TVD Reference:	WELL @ 4819.0ft (Original Well Elev)
Site:	Wells Ranch NW-34 Pad Sec.34-T6N-R63W	MD Reference:	WELL @ 4819.0ft (Original Well Elev)
Well:	Wells Ranch 34F-402	North Reference:	True
Wellbore:	Wellbore #1	Survey Calculation Method:	Minimum Curvature
Design:	Wellbore #1	Database:	Landmark

Project	SEC.34-T6N-R63W, Weld County, Colorado		
Map System:	US State Plane 1983	System Datum:	Mean Sea Level
Geo Datum:	North American Datum 1983		Using Well Reference Point
Map Zone:	Colorado Northern Zone		Using geodetic scale factor

Site		Wells Ranch NW-34 Pad Sec.34-T6N-R63W			
Site Position:		Northing:	1,407,390.53ft	Latitude:	40.446780
From:	Lat/Long	Easting:	3,297,091.91 ft	Longitude:	-104.432520
Position Uncertainty:	0.0 ft	Slot Radius:	"	Grid Convergence:	0.69 °

Well	Wells Ranch 34F-402					
Well Position	+N-S	0.0 ft	Northing:	1,407,332.24 ft	Latitude:	40.446620
	+E-W	0.0 ft	Easting:	3,297,092.61 ft	Longitude:	-104.432520
Position Uncertainty		0.0 ft	Wellhead Elevation:	ft	Ground Level:	4,804.0 ft

Wellbore	Wellbore #1				
Magnetics	Model Name	Sample Date	Declination (°)	Dip Angle (°)	Field Strength (nT)
	IGRF2010	7/12/2012	8.54	67.11	53,078

Design	Wellbore #1				
Audit Notes:					
Version:	1.0	Phase:	ACTUAL	Tie On Depth:	0.0
Vertical Section:	Depth From (TVD) (ft)	+N/-S (ft)	+E/-W (ft)	Direction (°)	
	0.0	0.0	0.0	90.48	

Survey Program	Date 7/31/2012				
From (ft)	To (ft)	Survey (Wellbore)	Tool Name	Description	
96.0	11,206.0	Survey #1 (Wellbore #1)	MWD	MWD - Standard	

Survey										
Measured Depth (ft)	Inclination (°)	Azimuth (°)	Vertical Depth (ft)	+N/-S (ft)	+E/-W (ft)	Vertical Section (ft)	Dogleg Rate (°/100ft)	Build Rate (°/100ft)	Turn Rate (°/100ft)	
0.0	0.00	0.00	0.0	0.0	0.0	0.0	0.00	0.00	0.00	
1.0	0.00	56.10	1.0	0.0	0.0	0.0	0.21	0.21	0.00	
HARDLINE SHL 460'FWL - SECTION LINE 50'W OF SHL										
7.7	0.02	56.10	7.7	0.0	0.0	0.0	0.21	0.21	0.00	
HARDLINE BHL 460'FEL										
96.0	0.20	56.10	96.0	0.1	0.1	0.1	0.21	0.21	0.00	
214.0	0.40	143.90	214.0	-0.1	0.6	0.6	0.37	0.17	74.41	
336.0	1.10	198.80	336.0	-1.6	0.4	0.4	0.76	0.57	45.00	
461.0	0.40	207.00	461.0	-3.1	-0.2	-0.1	0.57	-0.56	6.56	
588.0	1.10	228.50	588.0	-4.3	-1.3	-1.2	0.58	0.55	16.93	
715.0	1.10	259.10	714.9	-5.3	-3.4	-3.3	0.46	0.00	24.09	
854.0	1.20	269.80	853.9	-5.6	-6.1	-6.1	0.17	0.07	7.70	

Company:	PETROLEUM DEVELOPMENT CORP Weld County CO	Local Co-ordinate Reference:	Well Wells Ranch 34F-402
Project:	SEC.34-T6N-R63W	TVD Reference:	WELL @ 4819.0ft (Original Well Elev)
Site:	Wells Ranch NW-34 Pad Sec.34-T6N-R63W	MD Reference:	WELL @ 4819.0ft (Original Well Elev)
Well:	Wells Ranch 34F-402	North Reference:	True
Wellbore:	Wellbore #1	Survey Calculation Method:	Minimum Curvature
Design:	Wellbore #1	Database:	Landmark

Survey									
Measured Depth (ft)	Inclination (°)	Azimuth (°)	Vertical Depth (ft)	+N/-S (ft)	+E/-W (ft)	Vertical Section (ft)	Dogleg Rate (°/100ft)	Build Rate (°/100ft)	Turn Rate (°/100ft)
903.0	1.20	269.80	902.9	-5.6	-7.2	-7.1	0.00	0.00	0.00
916.0	1.40	280.50	915.9	-5.6	-7.5	-7.4	2.41	1.54	82.31
1,105.0	0.10	244.40	1,104.9	-5.2	-9.9	-9.8	0.70	-0.69	-19.10
1,296.0	0.10	48.00	1,295.9	-5.2	-9.9	-9.9	0.10	0.00	85.65
1,480.0	0.50	344.20	1,479.9	-4.3	-10.0	-10.0	0.25	0.22	-34.67
1,662.0	1.40	242.70	1,661.9	-4.6	-12.2	-12.2	0.87	0.49	-55.77
1,846.0	0.90	144.80	1,845.8	-6.8	-13.4	-13.3	0.96	-0.27	-53.21
2,029.0	1.00	136.70	2,028.8	-9.1	-11.4	-11.4	0.09	0.05	-4.43
2,212.0	1.70	113.90	2,211.8	-11.4	-7.9	-7.8	0.48	0.38	-12.46
2,395.0	1.50	125.80	2,394.7	-13.9	-3.4	-3.3	0.21	-0.11	6.50
2,578.0	0.40	238.60	2,577.7	-15.6	-2.0	-1.9	0.93	-0.60	61.64
2,761.0	0.80	227.70	2,760.7	-16.8	-3.5	-3.4	0.23	0.22	-5.96
2,945.0	1.20	240.20	2,944.6	-18.6	-6.2	-6.0	0.25	0.22	6.79
3,136.0	1.10	245.30	3,135.6	-20.4	-9.6	-9.4	0.07	-0.05	2.67
3,326.0	0.20	288.20	3,325.6	-21.0	-11.5	-11.4	0.51	-0.47	22.58
3,518.0	0.20	238.50	3,517.6	-21.1	-12.1	-12.0	0.09	0.00	-25.89
3,709.0	2.10	38.40	3,708.5	-18.5	-10.2	-10.1	1.20	0.99	83.72
3,899.0	2.50	52.30	3,898.4	-13.3	-4.8	-4.7	0.36	0.21	7.32
4,090.0	1.80	62.10	4,089.3	-9.3	1.1	1.2	0.41	-0.37	5.13
4,281.0	2.00	19.60	4,280.2	-4.8	4.9	5.0	0.73	0.10	-22.25
4,472.0	2.50	349.80	4,471.0	2.5	5.3	5.3	0.66	0.26	-15.60
4,630.0	1.80	326.50	4,628.9	7.9	3.3	3.2	0.70	-0.44	-14.75
4,852.0	1.10	278.40	4,850.8	11.1	-0.7	-0.8	0.61	-0.32	-21.67
5,042.0	1.90	174.00	5,040.8	8.3	-2.2	-2.3	1.27	0.42	-54.95
5,233.0	1.20	145.10	5,231.7	3.5	-0.7	-0.7	0.54	-0.37	-15.13
5,423.0	0.90	95.30	5,421.7	1.7	1.9	1.9	0.49	-0.16	-26.21
5,613.0	1.10	116.00	5,611.7	0.8	5.0	5.0	0.22	0.11	10.89
5,804.0	1.10	90.10	5,802.6	0.0	8.5	8.5	0.26	0.00	-13.56
5,868.0	0.60	105.00	5,866.6	-0.1	9.4	9.4	0.85	-0.78	23.28
5,899.0	0.80	120.70	5,897.6	-0.3	9.8	9.8	0.89	0.65	50.65
5,931.0	1.60	97.10	5,929.6	-0.4	10.4	10.4	2.89	2.50	-73.75
5,963.0	3.10	93.60	5,961.6	-0.6	11.7	11.7	4.71	4.69	-10.94
5,995.0	3.90	101.20	5,993.5	-0.8	13.7	13.7	2.88	2.50	23.75
6,026.0	5.50	102.20	6,024.4	-1.3	16.2	16.2	5.17	5.16	3.23
6,058.0	6.60	111.10	6,056.3	-2.3	19.4	19.4	4.51	3.44	27.81
6,090.0	6.50	113.80	6,088.0	-3.7	22.7	22.8	1.01	-0.31	8.44
6,122.0	7.00	117.40	6,119.8	-5.3	26.1	26.2	2.05	1.56	11.25
6,154.0	7.90	116.80	6,151.5	-7.2	29.8	29.9	2.82	2.81	-1.88
6,186.0	10.60	114.50	6,183.1	-9.4	34.5	34.5	8.51	8.44	-7.19
6,217.0	13.40	112.70	6,213.5	-12.0	40.4	40.5	9.11	9.03	-5.81
6,249.0	16.40	112.10	6,244.4	-15.1	48.0	48.1	9.39	9.38	-1.88
6,280.0	19.10	110.10	6,273.9	-18.5	56.8	57.0	8.93	8.71	-6.45
6,312.0	21.70	110.70	6,303.9	-22.4	67.3	67.4	8.15	8.13	1.88
6,344.0	24.70	109.60	6,333.3	-26.8	79.1	79.3	9.47	9.38	-3.44
6,376.0	27.90	108.20	6,362.0	-31.3	92.5	92.8	10.19	10.00	-4.38
6,408.0	30.60	106.60	6,389.9	-36.0	107.4	107.7	8.78	8.44	-5.00
6,440.0	32.50	106.00	6,417.2	-40.7	123.5	123.8	6.02	5.94	-1.88
6,472.0	35.00	107.50	6,443.8	-45.8	140.5	140.9	8.23	7.81	4.69
6,504.0	37.40	108.00	6,469.6	-51.6	158.5	158.9	7.56	7.50	1.56
6,535.0	40.50	107.50	6,493.7	-57.5	177.1	177.5	10.05	10.00	-1.61
6,567.0	42.80	107.70	6,517.6	-64.0	197.3	197.9	7.20	7.19	0.63
6,599.0	43.20	108.40	6,541.0	-70.7	218.1	218.7	1.95	1.25	2.19
6,631.0	45.40	106.50	6,563.9	-77.4	239.4	240.0	8.03	6.88	-5.94
6,662.0	48.10	105.90	6,585.1	-83.7	261.1	261.8	8.82	8.71	-1.94

Company:	PETROLEUM DEVELOPMENT CORP Weld County CO	Local Co-ordinate Reference:	Well Wells Ranch 34F-402
Project:	SEC.34-T6N-R63W	TVD Reference:	WELL @ 4819.0ft (Original Well Elev)
Site:	Wells Ranch NW-34 Pad Sec.34-T6N-R63W	MD Reference:	WELL @ 4819.0ft (Original Well Elev)
Well:	Wells Ranch 34F-402	North Reference:	True
Wellbore:	Wellbore #1	Survey Calculation Method:	Minimum Curvature
Design:	Wellbore #1	Database:	Landmark

Survey									
Measured Depth (ft)	Inclination (°)	Azimuth (°)	Vertical Depth (ft)	+N/-S (ft)	+E/-W (ft)	Vertical Section (ft)	Dogleg Rate (°/100ft)	Build Rate (°/100ft)	Turn Rate (°/100ft)
6,694.0	51.10	104.90	6,605.9	-90.2	284.6	285.3	9.67	9.38	-3.13
6,726.0	53.10	105.60	6,625.5	-96.8	308.9	309.7	6.48	6.25	2.19
6,759.0	54.40	105.70	6,645.1	-104.0	334.6	335.4	3.95	3.94	0.30
6,790.0	55.80	102.30	6,662.8	-110.2	359.2	360.1	10.06	4.52	-10.97
6,822.0	57.90	99.20	6,680.3	-115.1	385.5	386.5	10.43	6.56	-9.69
6,854.0	60.10	95.90	6,696.8	-118.7	412.7	413.7	11.20	6.88	-10.31
6,886.0	62.80	93.10	6,712.1	-120.9	440.7	441.7	11.41	8.44	-8.75
6,918.0	65.90	92.40	6,725.9	-122.3	469.6	470.6	9.89	9.69	-2.19
6,950.0	68.90	92.20	6,738.2	-123.5	499.1	500.1	9.39	9.38	-0.63
6,982.0	70.70	92.60	6,749.3	-124.8	529.1	530.1	5.75	5.63	1.25
7,013.0	72.90	91.90	6,759.0	-125.9	558.5	559.5	7.41	7.10	-2.26
7,045.0	75.70	91.00	6,767.6	-126.7	589.3	590.3	9.16	8.75	-2.81
7,077.0	78.20	89.20	6,774.8	-126.7	620.5	621.5	9.54	7.81	-5.63
7,109.0	79.90	87.50	6,780.9	-125.8	651.9	652.9	7.44	5.31	-5.31
7,141.0	80.60	85.80	6,786.3	-124.0	683.3	684.4	5.67	2.19	-5.31
7,173.0	82.10	84.80	6,791.1	-121.4	714.9	715.9	5.61	4.69	-3.13
7,220.0	84.10	84.80	6,796.8	-117.2	761.3	762.3	4.26	4.26	0.00
7,247.0	86.30	85.90	6,799.1	-115.0	788.2	789.1	9.10	8.15	4.07
7,279.0	86.60	85.90	6,801.0	-112.7	820.0	820.9	0.94	0.94	0.00
7,311.0	86.40	85.50	6,803.0	-110.3	851.9	852.8	1.40	-0.63	-1.25
7,343.0	85.90	85.40	6,805.1	-107.8	883.7	884.6	1.59	-1.56	-0.31
7,374.0	86.40	85.60	6,807.2	-105.4	914.5	915.4	1.74	1.61	0.65
7,407.0	86.70	86.10	6,809.2	-103.0	947.4	948.2	1.76	0.91	1.52
7,439.0	87.60	86.20	6,810.8	-100.8	979.3	980.1	2.83	2.81	0.31
7,470.0	88.50	86.80	6,811.8	-98.9	1,010.2	1,011.0	3.49	2.90	1.94
7,502.0	89.70	87.10	6,812.4	-97.2	1,042.1	1,042.9	3.87	3.75	0.94
7,534.0	91.00	88.50	6,812.2	-96.0	1,074.1	1,074.9	5.97	4.06	4.38
7,566.0	92.00	88.70	6,811.3	-95.2	1,106.1	1,106.9	3.19	3.13	0.63
7,597.0	92.10	88.70	6,810.2	-94.5	1,137.1	1,137.8	0.32	0.32	0.00
7,629.0	92.00	88.00	6,809.1	-93.6	1,169.0	1,169.8	2.21	-0.31	-2.19
7,661.0	92.40	87.30	6,807.8	-92.3	1,201.0	1,201.7	2.52	1.25	-2.19
7,693.0	92.40	87.30	6,806.5	-90.8	1,232.9	1,233.6	0.00	0.00	0.00
7,724.0	91.00	86.80	6,805.6	-89.2	1,263.9	1,264.6	4.80	-4.52	-1.61
7,756.0	90.30	86.60	6,805.2	-87.3	1,295.8	1,296.5	2.28	-2.19	-0.63
7,788.0	90.60	86.80	6,805.0	-85.5	1,327.8	1,328.4	1.13	0.94	0.63
7,820.0	90.80	86.90	6,804.6	-83.7	1,359.7	1,360.4	0.70	0.63	0.31
7,852.0	90.00	86.00	6,804.3	-81.8	1,391.6	1,392.3	3.76	-2.50	-2.81
7,883.0	89.90	86.10	6,804.4	-79.6	1,422.6	1,423.2	0.46	-0.32	0.32
7,915.0	90.10	86.10	6,804.4	-77.4	1,454.5	1,455.1	0.63	0.63	0.00
7,946.0	89.30	85.20	6,804.5	-75.1	1,485.4	1,486.0	3.88	-2.58	-2.90
7,978.0	89.20	85.20	6,805.0	-72.4	1,517.3	1,517.8	0.31	-0.31	0.00
8,010.0	89.30	85.20	6,805.4	-69.7	1,549.2	1,549.7	0.31	0.31	0.00
8,041.0	89.40	85.20	6,805.7	-67.1	1,580.1	1,580.6	0.32	0.32	0.00
8,073.0	89.80	85.50	6,805.9	-64.6	1,612.0	1,612.4	1.56	1.25	0.94
8,105.0	90.00	86.10	6,806.0	-62.2	1,643.9	1,644.3	1.98	0.63	1.88
8,137.0	89.30	85.50	6,806.2	-59.9	1,675.8	1,676.2	2.88	-2.19	-1.88
8,168.0	89.50	85.70	6,806.5	-57.5	1,706.7	1,707.1	0.91	0.65	0.65
8,200.0	89.70	85.50	6,806.7	-55.0	1,738.6	1,739.0	0.88	0.63	-0.63
8,232.0	90.00	85.70	6,806.8	-52.6	1,770.5	1,770.9	1.13	0.94	0.63
8,264.0	89.70	85.50	6,806.9	-50.1	1,802.4	1,802.8	1.13	-0.94	-0.63
8,295.0	90.10	85.90	6,807.0	-47.8	1,833.3	1,833.7	1.82	1.29	1.29
8,327.0	89.40	85.50	6,807.1	-45.4	1,865.2	1,865.5	2.52	-2.19	-1.25
8,359.0	89.50	85.90	6,807.4	-43.0	1,897.1	1,897.4	1.29	0.31	1.25

Company:	PETROLEUM DEVELOPMENT CORP Weld County CO	Local Co-ordinate Reference:	Well Wells Ranch 34F-402
Project:	SEC.34-T6N-R63W	TVD Reference:	WELL @ 4819.0ft (Original Well Elev)
Site:	Wells Ranch NW-34 Pad Sec.34-T6N-R63W	MD Reference:	WELL @ 4819.0ft (Original Well Elev)
Well:	Wells Ranch 34F-402	North Reference:	True
Wellbore:	Wellbore #1	Survey Calculation Method:	Minimum Curvature
Design:	Wellbore #1	Database:	Landmark

Survey									
Measured Depth (ft)	Inclination (°)	Azimuth (°)	Vertical Depth (ft)	+N/-S (ft)	+E/-W (ft)	Vertical Section (ft)	Dogleg Rate (°/100ft)	Build Rate (°/100ft)	Turn Rate (°/100ft)
8,391.0	89.80	85.90	6,807.6	-40.7	1,929.1	1,929.3	0.94	0.94	0.00
8,422.0	89.80	86.10	6,807.7	-38.6	1,960.0	1,960.2	0.65	0.00	0.65
8,454.0	89.80	86.10	6,807.8	-36.4	1,991.9	1,992.1	0.00	0.00	0.00
8,486.0	89.80	86.10	6,807.9	-34.2	2,023.8	2,024.0	0.00	0.00	0.00
8,518.0	89.70	85.90	6,808.1	-32.0	2,055.8	2,055.9	0.70	-0.31	-0.63
8,549.0	89.80	86.10	6,808.2	-29.8	2,086.7	2,086.9	0.72	0.32	0.65
8,581.0	89.90	86.80	6,808.3	-27.8	2,118.6	2,118.8	2.21	0.31	2.19
8,613.0	89.90	86.80	6,808.4	-26.0	2,150.6	2,150.7	0.00	0.00	0.00
8,645.0	89.80	87.70	6,808.4	-24.5	2,182.5	2,182.7	2.83	-0.31	2.81
8,676.0	90.70	87.80	6,808.3	-23.3	2,213.5	2,213.6	2.92	2.90	0.32
8,708.0	91.00	89.00	6,807.8	-22.4	2,245.5	2,245.6	3.87	0.94	3.75
8,735.0	91.30	89.30	6,807.3	-22.0	2,272.5	2,272.6	1.57	1.11	1.11
8,767.0	91.60	89.30	6,806.5	-21.6	2,304.5	2,304.6	0.94	0.94	0.00
8,798.0	92.00	89.30	6,805.5	-21.2	2,335.4	2,335.5	1.29	1.29	0.00
8,830.0	92.50	89.10	6,804.3	-20.8	2,367.4	2,367.5	1.68	1.56	-0.63
8,862.0	92.70	88.90	6,802.8	-20.2	2,399.4	2,399.5	0.88	0.63	-0.63
8,894.0	91.40	89.10	6,801.7	-19.7	2,431.4	2,431.4	4.11	-4.06	0.63
8,925.0	91.70	89.60	6,800.8	-19.3	2,462.3	2,462.4	1.88	0.97	1.61
8,957.0	91.90	89.80	6,799.8	-19.1	2,494.3	2,494.4	0.88	0.63	0.63
8,989.0	91.40	90.20	6,798.9	-19.1	2,526.3	2,526.4	2.00	-1.56	1.25
9,021.0	91.60	91.30	6,798.1	-19.6	2,558.3	2,558.4	3.49	0.63	3.44
9,052.0	90.70	92.20	6,797.4	-20.5	2,589.3	2,589.4	4.11	-2.90	2.90
9,084.0	90.80	92.00	6,797.0	-21.7	2,621.3	2,621.3	0.70	0.31	-0.63
9,116.0	89.60	91.90	6,796.9	-22.8	2,653.2	2,653.3	3.76	-3.75	-0.31
9,148.0	89.90	91.60	6,797.0	-23.7	2,685.2	2,685.3	1.33	0.94	-0.94
9,179.0	89.10	91.20	6,797.3	-24.5	2,716.2	2,716.3	2.89	-2.58	-1.29
9,211.0	88.70	90.80	6,797.9	-25.1	2,748.2	2,748.3	1.77	-1.25	-1.25
9,243.0	89.30	90.80	6,798.5	-25.5	2,780.2	2,780.3	1.88	1.88	0.00
9,275.0	90.00	90.80	6,798.7	-26.0	2,812.2	2,812.3	2.19	2.19	0.00
9,306.0	89.90	90.80	6,798.7	-26.4	2,843.2	2,843.3	0.32	-0.32	0.00
9,338.0	90.00	91.00	6,798.7	-26.9	2,875.2	2,875.3	0.70	0.31	0.63
9,370.0	90.40	90.90	6,798.6	-27.4	2,907.2	2,907.3	1.29	1.25	-0.31
9,402.0	90.90	90.60	6,798.3	-27.8	2,939.2	2,939.3	1.82	1.56	-0.94
9,433.0	90.80	90.80	6,797.8	-28.2	2,970.2	2,970.3	0.72	-0.32	0.65
9,465.0	91.60	90.60	6,797.1	-28.6	3,002.2	3,002.3	2.58	2.50	-0.63
9,497.0	91.60	91.00	6,796.2	-29.1	3,034.1	3,034.3	1.25	0.00	1.25
9,529.0	91.50	91.00	6,795.4	-29.6	3,066.1	3,066.3	0.31	-0.31	0.00
9,560.0	91.70	91.20	6,794.5	-30.2	3,097.1	3,097.2	0.91	0.65	0.65
9,592.0	92.00	91.20	6,793.5	-30.9	3,129.1	3,129.2	0.94	0.94	0.00
9,624.0	92.20	91.00	6,792.3	-31.5	3,161.0	3,161.2	0.88	0.63	-0.63
9,656.0	92.40	91.20	6,791.0	-32.1	3,193.0	3,193.2	0.88	0.63	0.63
9,687.0	92.90	90.30	6,789.6	-32.5	3,224.0	3,224.1	3.32	1.61	-2.90
9,719.0	92.00	90.70	6,788.2	-32.8	3,256.0	3,256.1	3.08	-2.81	1.25
9,751.0	90.90	91.20	6,787.4	-33.3	3,287.9	3,288.1	3.78	-3.44	1.56
9,783.0	90.00	91.90	6,787.2	-34.2	3,319.9	3,320.1	3.56	-2.81	2.19
9,814.0	89.50	90.70	6,787.3	-34.9	3,350.9	3,351.1	4.19	-1.61	-3.87
9,846.0	89.60	91.00	6,787.5	-35.4	3,382.9	3,383.1	0.99	0.31	0.94
9,878.0	89.40	91.00	6,787.8	-35.9	3,414.9	3,415.1	0.63	-0.63	0.00
9,910.0	89.40	91.00	6,788.2	-36.5	3,446.9	3,447.1	0.00	0.00	0.00
9,941.0	89.30	90.50	6,788.5	-36.9	3,477.9	3,478.1	1.64	-0.32	-1.61
9,973.0	89.40	90.70	6,788.9	-37.2	3,509.9	3,510.1	0.70	0.31	0.63
10,004.0	89.70	91.00	6,789.1	-37.7	3,540.9	3,541.1	1.37	0.97	0.97
10,037.0	89.70	91.00	6,789.3	-38.3	3,573.9	3,574.1	0.00	0.00	0.00

Company:	PETROLEUM DEVELOPMENT CORP Weld County CO	Local Co-ordinate Reference:	Well Wells Ranch 34F-402
Project:	SEC.34-T6N-R63W	TVD Reference:	WELL @ 4819.0ft (Original Well Elev)
Site:	Wells Ranch NW-34 Pad Sec.34-T6N-R63W	MD Reference:	WELL @ 4819.0ft (Original Well Elev)
Well:	Wells Ranch 34F-402	North Reference:	True
Wellbore:	Wellbore #1	Survey Calculation Method:	Minimum Curvature
Design:	Wellbore #1	Database:	Landmark

Survey									
Measured Depth (ft)	Inclination (°)	Azimuth (°)	Vertical Depth (ft)	+N/-S (ft)	+E/-W (ft)	Vertical Section (ft)	Dogleg Rate (°/100ft)	Build Rate (°/100ft)	Turn Rate (°/100ft)
10,068.0	90.10	91.50	6,789.3	-38.9	3,604.9	3,605.1	2.07	1.29	1.61
10,100.0	91.00	91.20	6,789.0	-39.7	3,636.9	3,637.1	2.96	2.81	-0.94
10,132.0	91.70	91.20	6,788.3	-40.4	3,668.8	3,669.1	2.19	2.19	0.00
10,164.0	92.10	91.20	6,787.2	-41.0	3,700.8	3,701.0	1.25	1.25	0.00
10,195.0	92.10	91.20	6,786.1	-41.7	3,731.8	3,732.0	0.00	0.00	0.00
10,227.0	91.80	90.30	6,785.0	-42.1	3,763.8	3,764.0	2.96	-0.94	-2.81
10,259.0	91.50	90.30	6,784.1	-42.3	3,795.8	3,796.0	0.94	-0.94	0.00
10,291.0	91.00	89.40	6,783.4	-42.2	3,827.7	3,828.0	3.22	-1.56	-2.81
10,322.0	91.10	89.30	6,782.8	-41.8	3,858.7	3,859.0	0.46	0.32	-0.32
10,354.0	90.20	90.20	6,782.4	-41.7	3,890.7	3,890.9	3.98	-2.81	2.81
10,386.0	90.20	90.20	6,782.3	-41.8	3,922.7	3,922.9	0.00	0.00	0.00
10,417.0	90.40	90.80	6,782.2	-42.1	3,953.7	3,953.9	2.04	0.65	1.94
10,449.0	91.30	91.00	6,781.7	-42.6	3,985.7	3,985.9	2.88	2.81	0.63
10,481.0	91.70	91.40	6,780.9	-43.2	4,017.7	4,017.9	1.77	1.25	1.25
10,513.0	90.80	90.50	6,780.2	-43.8	4,049.7	4,049.9	3.98	-2.81	-2.81
10,544.0	90.90	91.00	6,779.7	-44.2	4,080.7	4,080.9	1.64	0.32	1.61
10,576.0	90.00	90.50	6,779.4	-44.6	4,112.7	4,112.9	3.22	-2.81	-1.56
10,608.0	90.00	90.30	6,779.4	-44.8	4,144.7	4,144.9	0.63	0.00	-0.63
10,640.0	90.00	90.50	6,779.4	-45.0	4,176.7	4,176.9	0.63	0.00	0.63
10,671.0	90.10	91.00	6,779.4	-45.4	4,207.7	4,207.9	1.64	0.32	1.61
10,703.0	90.80	91.20	6,779.2	-46.1	4,239.7	4,239.9	2.28	2.19	0.63
10,735.0	91.20	90.90	6,778.6	-46.6	4,271.7	4,271.9	1.56	1.25	-0.94
10,767.0	91.50	91.00	6,777.9	-47.2	4,303.7	4,303.9	0.99	0.94	0.31
10,798.0	91.50	91.20	6,777.0	-47.8	4,334.6	4,334.9	0.64	0.00	0.65
10,830.0	91.30	91.70	6,776.3	-48.6	4,366.6	4,366.9	1.68	-0.63	1.56
10,862.0	92.30	92.70	6,775.3	-49.8	4,398.6	4,398.8	4.42	3.13	3.13
10,893.0	93.80	94.40	6,773.6	-51.7	4,429.5	4,429.7	7.31	4.84	5.48
10,925.0	94.90	95.00	6,771.2	-54.3	4,461.3	4,461.6	3.91	3.44	1.88
10,957.0	95.10	95.20	6,768.4	-57.2	4,493.0	4,493.3	0.88	0.63	0.63
10,988.0	94.80	96.10	6,765.7	-60.2	4,523.8	4,524.1	3.05	-0.97	2.90
11,020.0	95.90	97.00	6,762.7	-63.9	4,555.4	4,555.8	4.43	3.44	2.81
11,052.0	95.80	96.80	6,759.5	-67.7	4,587.0	4,587.4	0.70	-0.31	-0.63
11,084.0	95.80	96.70	6,756.2	-71.4	4,618.6	4,619.1	0.31	0.00	-0.31
11,116.0	95.80	96.70	6,753.0	-75.1	4,650.2	4,650.7	0.00	0.00	0.00
11,159.0	96.00	97.00	6,748.6	-80.2	4,692.7	4,693.2	0.84	0.47	0.70
11,195.5	96.00	97.00	6,744.8	-84.7	4,728.7	4,729.2	0.00	0.00	0.00
BHL 1360'FNL & 500'FEL									
11,206.0	96.00	97.00	6,743.7	-85.9	4,739.1	4,739.7	0.00	0.00	0.00

Checked By: _____ Approved By: _____ Date: _____