
WPX ENERGY ROCKY MOUNTAIN

**RWF 512-36
Rulison
Garfield County , Colorado**

Cement Surface Casing
02-Feb-2012

Post Job Report

The Road to Excellence Starts with Safety

Sold To #: 300721	Ship To #: 2901731	Quote #:	Sales Order #: 9198145
Customer: WPX ENERGY ROCKY MOUNTAIN LLC-EBUS	Customer Rep: Hartl, Al		
Well Name: RWF	Well #: 512-36	API/UWI #: 05-045-20772	
Field: Rulison	City (SAP): RIFLE	County/Parish: Garfield	State: Colorado
Lat: N 39.485 deg. OR N 39 deg. 29 min. 6.608 secs.	Long: W 107.84 deg. OR W -108 deg. 9 min. 36.112 secs.		
Contractor: NABORS 576	Rig/Platform Name/Num: NABORS 576		
Job Purpose: Cement Surface Casing			
Well Type: Development Well	Job Type: Cement Surface Casing		
Sales Person: MAYO, MARK	Srv Supervisor: JAMISON, PRICE	MBU ID Emp #: 229155	

Job Personnel

HES Emp Name	Exp Hrs	Emp #	HES Emp Name	Exp Hrs	Emp #	HES Emp Name	Exp Hrs	Emp #
DEUSSEN, EDWARD Eric	3.5	485182	HYDE, DUSTIN C	3.5	453940	JAMISON, PRICE W	3.5	229155
VANALSTYNE, TROY L	3.5	420256						

Equipment

HES Unit #	Distance-1 way	HES Unit #	Distance-1 way	HES Unit #	Distance-1 way	HES Unit #	Distance-1 way
10995027	60 mile	11021972	60 mile	11021972	60 mile	11027039	60 mile
11583934	60 mile						

Job Hours

Date	On Location Hours	Operating Hours	Date	On Location Hours	Operating Hours	Date	On Location Hours	Operating Hours
2/2/12	3.5	1						

TOTAL	Total is the sum of each column separately							
-------	--	--	--	--	--	--	--	--

Job

Job Times

Formation Name					Date	Time	Time Zone
Formation Depth (MD)	Top	Bottom			Called Out	02 - Feb - 2012	00:10 MST
Form Type		BHST			On Location	02 - Feb - 2012	04:00 MST
Job depth MD	1161.5 ft	Job Depth TVD	1175. ft		Job Started	02 - Feb - 2012	05:18 MST
Water Depth		Wk Ht Above Floor	3. ft		Job Completed	02 - Feb - 2012	06:11 MST
Perforation Depth (MD)	From	To			Departed Loc	02 - Feb - 2012	07:30 MST

Well Data

Description	New / Used	Max pressure psig	Size in	ID in	Weight lbm/ft	Thread	Grade	Top MD ft	Bottom MD ft	Top TVD ft	Bottom TVD ft
OPEN HOLE				13.5				.	1175.	.	1175.
SURFACE CASING	Unknown		9.625	9.001	32.3		H-40	.	1161.5	.	1161.5

Sales/Rental/3rd Party (HES)

Description	Qty	Qty uom	Depth	Supplier
PLUG,CMTG,TOP,9 5/8,HWE,8.16 MIN/9.06 MA	1	EA		

Tools and Accessories

Type	Size	Qty	Make	Depth	Type	Size	Qty	Make	Depth	Type	Size	Qty	Make
Guide Shoe					Packer					Top Plug			
Float Shoe					Bridge Plug					Bottom Plug			
Float Collar					Retainer					SSR plug set			
Insert Float										Plug Container			
Stage Tool										Centralizers			

Miscellaneous Materials

Gelling Agt	Conc	Surfactant	Conc	Acid Type	Qty	Conc	%
Treatment Fld	Conc	Inhibitor	Conc	Sand Type	Size	Qty	

Fluid Data

Stage/Plug #: 1

Fluid #	Stage Type	Fluid Name	Qty	Qty uom	Mixing Density lbm/gal	Yield ft ³ /sk	Mix Fluid Gal/sk	Rate bbl/min	Total Mix Fluid Gal/sk
1	Fresh Water		20.00	bbl	8.4	.0	.0	6.0	
2	Lead Cement	VERSACEM (TM) SYSTEM (452010)	160.0	sacks	12.3	2.38	13.75	8.0	13.75
3	Tail Cement	VERSACEM (TM) SYSTEM (452010)	160.0	sacks	12.8	2.11	11.75	8.0	11.75
4	Displacement Fluid		88.00	bbl	8.4	.0	.0	10.0	
Calculated Values		Pressures		Volumes					
Displacement	88	Shut In: Instant		Lost Returns	NO	Cement Slurry	127.9	Pad	
Top Of Cement	SURFACE	5 Min		Cement Returns	18	Actual Displacement	88	Treatment	
Frac Gradient		15 Min		Spacers	20	Load and Breakdown		Total Job	236
Rates									
Circulating	RIG	Mixing	8	Displacement	10	Avg. Job	8		
Cement Left In Pipe	Amount	42.8 ft	Reason	Shoe Joint					
Frac Ring # 1 @	ID	Frac ring # 2 @	ID	Frac Ring # 3 @	ID	Frac Ring # 4 @	ID		
The Information Stated Herein Is Correct				Customer Representative Signature					

The Road to Excellence Starts with Safety

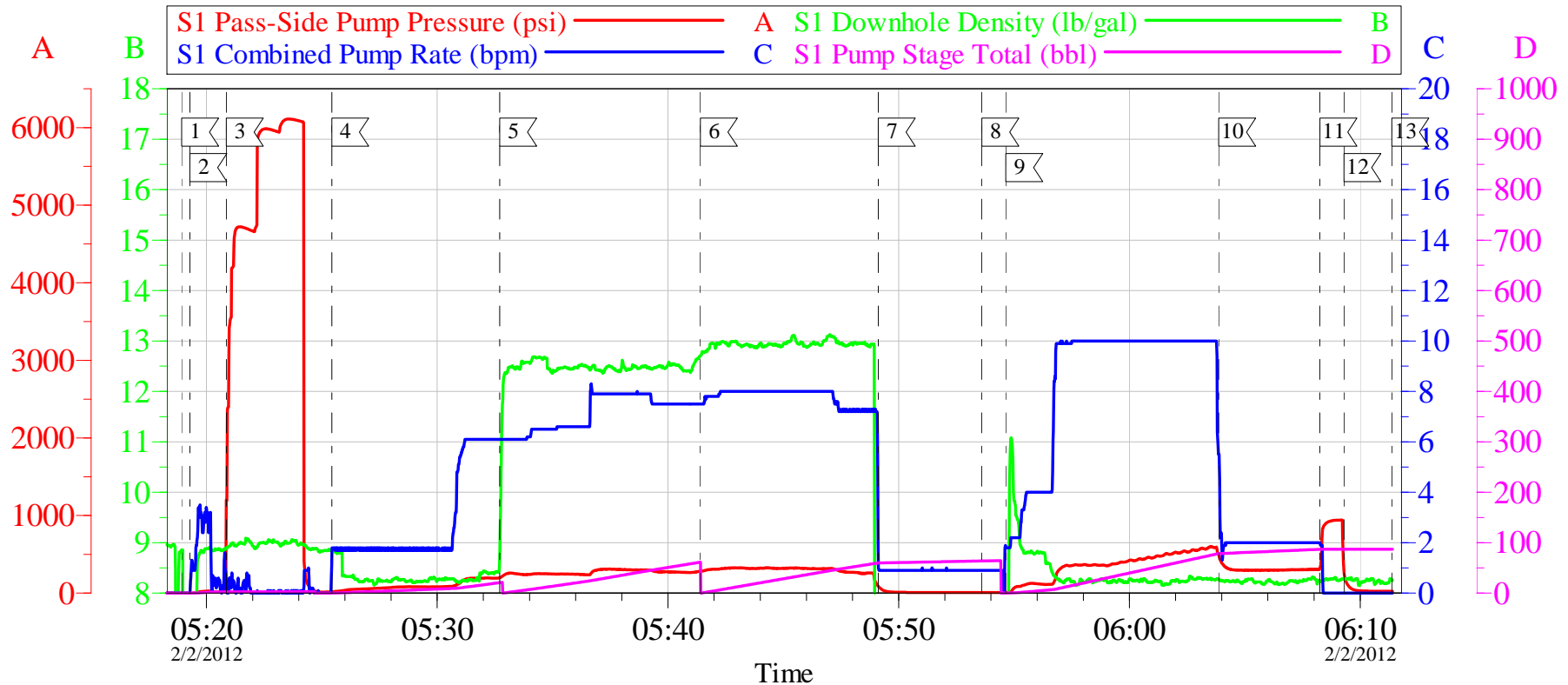
Sold To #: 300721	Ship To #: 2901731	Quote #:	Sales Order #: 9198145
Customer: WPX ENERGY ROCKY MOUNTAIN LLC-EBUS		Customer Rep: Hartl, Al	
Well Name: RWF		Well #: 512-36	API/UWI #: 05-045-20772
Field: Rulison	City (SAP): RIFLE	County/Parish: Garfield	State: Colorado
Legal Description:			
Lat: N 39.485 deg. OR N 39 deg. 29 min. 6.608 secs.		Long: W 107.84 deg. OR W -108 deg. 9 min. 36.112 secs.	
Contractor: NABORS 576		Rig/Platform Name/Num: NABORS 576	
Job Purpose: Cement Surface Casing			Ticket Amount:
Well Type: Development Well		Job Type: Cement Surface Casing	
Sales Person: MAYO, MARK		Srv Supervisor: JAMISON, PRICE	MBU ID Emp #: 229155

Activity Description	Date/Time	Cht #	Rate bbl/ min	Volume bbl		Pressure psig		Comments
				Stage	Total	Tubing	Casing	
Call Out	02/02/2012 00:10							TD 1175 HOLE SIZE 13.5 TP 1161.5 CASING 9.625 32.3 # H-40 SHOE JOINT 42.8
Depart Yard Safety Meeting	02/02/2012 01:45							
Crew Leave Yard	02/02/2012 02:00							
Arrive At Loc	02/02/2012 04:00							
Assessment Of Location Safety Meeting	02/02/2012 04:15							
Pre-Rig Up Safety Meeting	02/02/2012 04:20							
Pre-Job Safety Meeting	02/02/2012 04:50							
Start Job	02/02/2012 05:18							
Prime Pumps	02/02/2012 05:19		2	2			27.0	FRESH WATER
Test Lines	02/02/2012 05:20						5000. 0	
Pump Spacer 1	02/02/2012 05:25		6	20			195.0	FRESH WATER
Pump Lead Cement	02/02/2012 05:32		8	67.8			311.0	MIXED @ 12.3 PPG YIELD 2.38 WAT/REQ 13.77 160 SKS
Pump Tail Cement	02/02/2012 05:41		8	60.1			324.0	MIXED @ 12.8 PPG YIELD 2.11 WAT/REQ 11.75 160 SKS
Shutdown	02/02/2012 05:49							
Drop Plug	02/02/2012 05:53							
Activity Description	Date/Time	Cht #	Rate bbl/ min	Volume bbl		Pressure psig		Comments
				Stage	Total	Tubing	Casing	
Pump Displacement	02/02/2012 05:54		10					FRESH WATER

Slow Rate	02/02/2012 06:03		2	78			621.0	
Bump Plug	02/02/2012 06:08		2	88			300.0	PRESSURE UP TO 940 PSI
Check Floats	02/02/2012 06:09							FLOATS HELD
End Job	02/02/2012 06:11							CEMENT BACK TO SURFACE 18 BBLS
Post-Job Safety Meeting (Pre Rig-Down)	02/02/2012 06:20							
Depart Location Safety Meeting	02/02/2012 07:20							CASING WAS NOT MOVED THROUGHOUT JOB
Crew Leave Location	02/02/2012 07:30							THANKS FOR USING HALLIBURTON BILL JAMISON & CREW

WPX RWF 512-36

9.625 SURFACE CASING



Local Event Log

1 START JOB	05:18:55	2 PRIME LINES	05:19:17
3 TEST LINES	05:20:52	4 START FRESH WATER SPACER	05:25:26
5 START LEAD CEMENT	05:32:43	6 START TAIL CEMENT	05:41:24
7 SHUT DOWN	05:49:07	8 DROP PLUG	05:53:36
9 START DISPLACEMENT	05:54:39	10 SLOW RATE	06:03:52
11 BUMP PLUG	06:08:16	12 CHECK FLOATS	06:09:18
13 END JOB	06:11:22		

Customer: WPX
Well Description: RWF 512-36
Company Rep: AL HARTL

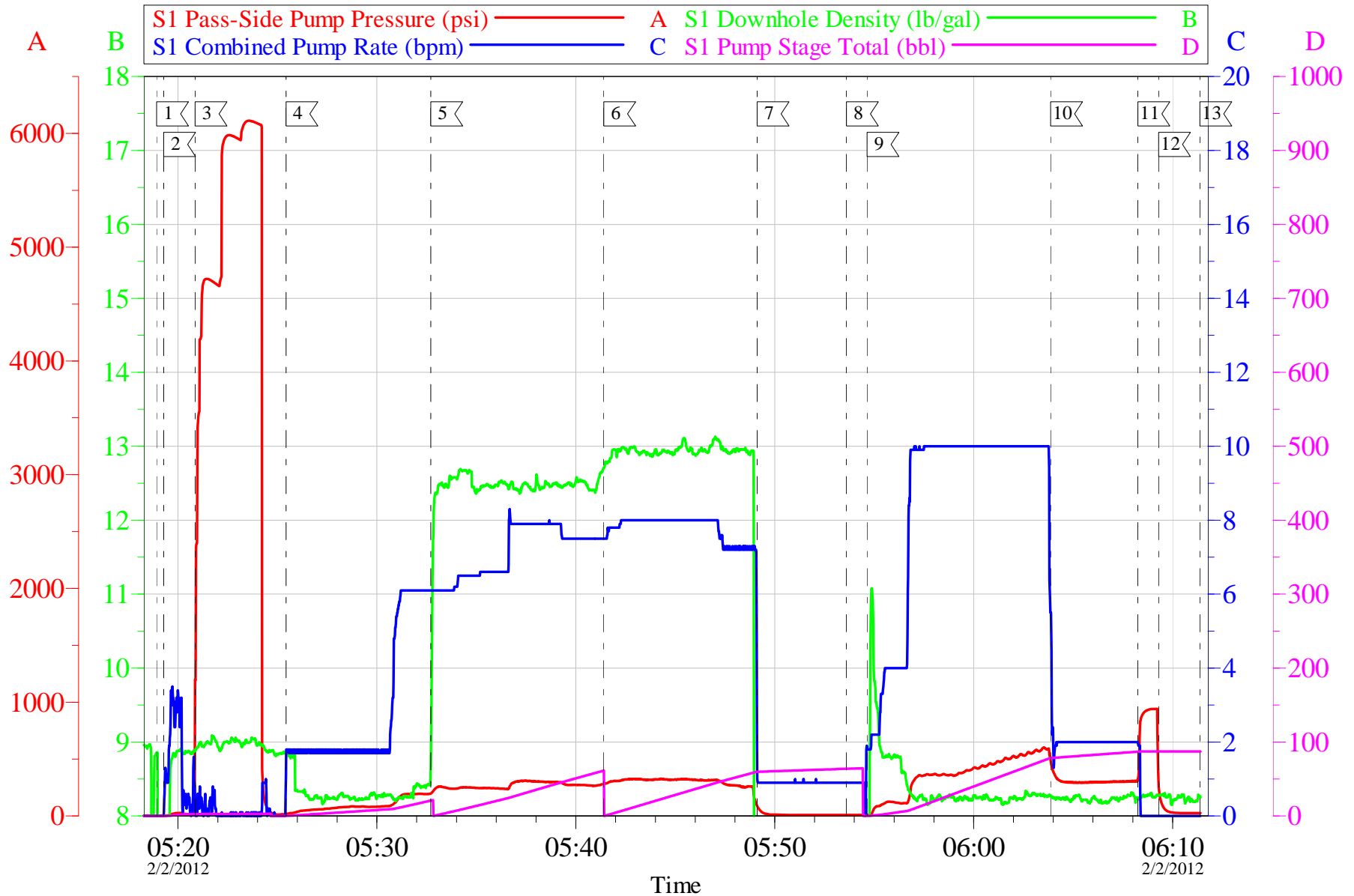
Job Date: 02-Feb-2012
Job Type: CEMENT
Cement Supervisor: BILL JAMISON

Sales Order #: 9198145
ADC Used: YES
Elite # 3 ED DEUSSEN

OptiCem v6.4.10
02-Feb-12 06:47

WPX RWF 512-36

9.625 SURFACE CASING



Customer: WPX	Job Date: 02-Feb-2012	Sales Order #: 9198145
Well Description: RWF 512-36	Job Type: CEMENT	ADC Used: YES
Company Rep: AL HARTL	Cement Supervisor: BILL JAMISON	Elite # 3 ED DEUSSEN

OptiCem v6.4.10
02-Feb-12 06:47

HALLIBURTON

Water Analysis Report

Company: WILLIAMS PRODUCTION

Submitted by: BILL JAMISON

Attention: JOHN TROUT

Lease RWF

Well # 512-36

Date: 2/2/2012

Date Rec.: 2/2/2012

S.O.# 9198145

Job Type: 9 5/8" SURFACE

Specific Gravity	<i>MAX</i>	1
pH	<i>8</i>	6.8
Potassium (K)	<i>5000</i>	450 Mg / L
Calcium (Ca)	<i>500</i>	250 Mg / L
Iron (FE2)	<i>300</i>	3 Mg / L
Chlorides (Cl)	<i>3000</i>	0 Mg / L
Sulfates (SO ₄)	<i>1500</i>	-200 Mg / L
Chlorine (Cl ₂)		0 Mg / L
Temp	<i>40-80</i>	68 Deg
Total Dissolved Solids		210 Mg / L

Respectfully: BILL JAMISON

Title: CEMENTING SUPERVISOR

Location: Grand Junction, CO

NOTICE: This report is limited to the described sample tested. Any person using or relying on this report agrees that Halliburton shall not be liable for any loss or damage whether due to act or omission resulting from such report or

Sales Order #: 9198145	Line Item: 10	Survey Conducted Date: 2/2/2012
Customer: WPX ENERGY ROCKY MOUNTAIN LLC-EBUS		Job Type (BOM): CMT SURFACE CASING BOM
Customer Representative: AL HARTL		API / UWI: (leave blank if unknown) 05-045-20772
Well Name: RWF		Well Number: 512-36
Well Type: Development Well	Well Country: United States of America	
H2S Present: No	Well State: Colorado	Well County: Garfield

Dear Customer,

We hope that you were satisfied with the service quality of this job performed by Halliburton. It is the aim of our management and service personnel to deliver equipment and service of a standard unmatched in the service sector of the energy industry.

Please take the time to let us know if our performance met with your satisfaction. Please be as critical as possible to ensure we constantly improve our service. Your comments are of great value to us and are intended for the exclusive use of Halliburton.

CUSTOMER SATISFACTION SURVEY

CATEGORY	CUSTOMER SATISFACTION RESPONSE	
Survey Conducted Date	The date the survey was conducted	2/2/2012
Survey Interviewer	The survey interviewer is the person who initiated the survey.	PRICE JAMISON (HAL9235)
Customer Participation	Did the customer participate in this survey? (Y/N)	Yes
Customer Representative	Enter the Customer representative name	AL HARTL
HSE	Was our HSE performance satisfactory? Circle Y or N	Yes
Equipment	Were you satisfied with our Equipment? Circle Y or N	Yes
Personnel	Were you satisfied with our people? Circle Y or N	Yes
Customer Comment	Customer's Comment	NONE

CUSTOMER SIGNATURE

Sales Order #: 9198145	Line Item: 10	Survey Conducted Date: 2/2/2012
Customer: WPX ENERGY ROCKY MOUNTAIN LLC-EBUS		Job Type (BOM): CMT SURFACE CASING BOM
Customer Representative: AL HARTL		API / UWI: (leave blank if unknown) 05-045-20772
Well Name: RWF		Well Number: 512-36
Well Type: Development Well	Well Country: United States of America	
H2S Present: No	Well State: Colorado	Well County: Garfield

KEY PERFORMANCE INDICATORS

General	
Survey Conducted Date The date the survey was conducted	2/2/2012

Cementing KPI Survey	
Type of Job Select the type of job. (Cementing or Non-Cementing)	0
Select the Maximum Deviation range for this Job What is the highest deviation for the job you just completed? This may not be the maximum well deviation.	Deviated
Total Operating Time (hours) Total Operating Hours Including Rig-up, Pumping, Rig-down. Enter in decimal format.	3
HSE Incident, Accident, Injury HSE Incident, Accident, Injury. This should be recordable incidents only.	No
Was the job purpose achieved? Was the job delivered correctly as per customer agreed design?	Yes
Operating Hours (Pumping Hours) Total number of hours pumping fluid on this job. Enter in decimal format.	1
Customer Non-Productive Rig Time (hrs) Lost time due to Halliburton in the start, execution, or completion of an ordered service or product, or delays in a follow-on service. Enter in decimal format. 0 if none.	0
Type of Rig Classification Job Was Performed Type Of Rig (classification) Job Was Performed On	Drilling Rig (Portable)
Number Of JSAs Performed Number Of Jsas Performed	5
Number of Unplanned Shutdowns Unplanned shutdown is when injection stops for any period of time.	0
Was this a Primary Cement Job (Yes / No)	Yes

Sales Order #: 9198145	Line Item: 10	Survey Conducted Date: 2/2/2012
Customer: WPX ENERGY ROCKY MOUNTAIN LLC-EBUS		Job Type (BOM): CMT SURFACE CASING BOM
Customer Representative: AL HARTL		API / UWI: (leave blank if unknown) 05-045-20772
Well Name: RWF		Well Number: 512-36
Well Type: Development Well	Well Country: United States of America	
H2S Present: No	Well State: Colorado	Well County: Garfield

Primary Cement Job= Casing job, Liner job, or Tie-back job.	
Did We Run Wiper Plugs? Did We Run Top And Bottom Casing Wiper Plugs?	Top
Mixing Density of Job Stayed in Designed Density Range (0-100%) Density Range defined as +/- .20 ppg. Calculation: Total BBLs cement mixed at designed density divided by total BBLs of cement multiplied by 100	98
Was Automated Density Control Used? Was Automated Density Control (ADC) Used ?	Yes
Pump Rate (percent) of Job Stayed At Designed Pump Rate Pump Rate range defined as +/- 1bbl/min. Calculation: Total BBLs of fluid pumped at the designed rate divided by Total BBLs of fluid pumped, multiplied by 100	98
Nbr of Remedial Sqz Jobs Rqd - Competition Number Of Remedial Squeeze Jobs Required After Primary Job Performed By Competition	0
Nbr of Remedial Plug Jobs Rqd - HES Number Of Remedial Plug Jobs Needed After Primary Plug Pumped By HES	0
Nbr of Remedial Sqz Jobs Rqd - HES Number Of Remedial Squeeze Jobs Required After Primary Job Performed By HES	0