

---

# **WPX ENERGY ROCKY MOUNTAIN LLC-EBUS**

---

**PA 524-4  
PARACHUTE  
Garfield County , Colorado**

**Cement Surface Casing**  
**22-Oct-2012**

**Post Job Summary**

## The Road to Excellence Starts with Safety

Sold To #: 300721	Ship To #: 2953870	Quote #:	Sales Order #: 9844358
Customer: WPX ENERGY ROCKY MOUNTAIN LLC-EBUS	Customer Rep: Wilson, W.C		
Well Name: PA	Well #: 524-4	API/UWI #: 05-045-15509	
Field: PARACHUTE	City (SAP): PARACHUTE	County/Parish: Garfield	State: Colorado
Lat: N 39.463 deg. OR N 39 deg. 27 min. 48.096 secs.	Long: W 108.007 deg. OR W -109 deg. 59 min. 35.462 secs.		
Contractor: NABORS 577	Rig/Platform Name/Num: NABORS 577		
Job Purpose: Cement Surface Casing			
Well Type: Development Well	Job Type: Cement Surface Casing		
Sales Person: MAYO, MARK	Srv Supervisor: KUKUS, CHRISTOPHER	MBU ID Emp #: 413952	

## Job Personnel

HES Emp Name	Exp Hrs	Emp #	HES Emp Name	Exp Hrs	Emp #	HES Emp Name	Exp Hrs	Emp #
GOWEN, WESLEY M	0.0	496205	KUKUS, CHRISTOPHER A	0.0	413952	RAMSEY, STANTON Michael	0.0	477609

## Equipment

HES Unit #	Distance-1 way	HES Unit #	Distance-1 way	HES Unit #	Distance-1 way	HES Unit #	Distance-1 way
10567589C	60 mile	10713212	60 mile	11360871	60 mile	11583931	60 mile
11808829	60 mile						

## Job Hours

Date	On Location Hours	Operating Hours	Date	On Location Hours	Operating Hours	Date	On Location Hours	Operating Hours
TOTAL								

Total is the sum of each column separately

Job				Job Times			
Formation Name				Date	Time	Time Zone	
Formation Depth (MD)	Top	Bottom		Called Out	21 - Oct - 2012	18:30	MST
Form Type		BHST		On Location	21 - Oct - 2012	22:00	MST
Job depth MD	832. ft	Job Depth TVD	832. ft	Job Started	22 - Oct - 2012	01:03	MST
Water Depth		Wk Ht Above Floor	5. ft	Job Completed	22 - Oct - 2012	01:58	MST
Perforation Depth (MD)	From	To		Departed Loc	22 - Oct - 2012	03:00	MST

## Well Data

Description	New / Used	Max pressure psig	Size in	ID in	Weight lbm/ft	Thread	Grade	Top MD ft	Bottom MD ft	Top TVD ft	Bottom TVD ft
-------------	------------	-------------------	---------	-------	---------------	--------	-------	-----------	--------------	------------	---------------

Sales/Rental/3<sup>rd</sup> Party (HES)

Description	Qty	Qty uom	Depth	Supplier
PLUG,CMTG,TOP,9 5/8,HWE,8.16 MIN/9.06 MA	1	EA		

## Tools and Accessories

Type	Size	Qty	Make	Depth	Type	Size	Qty	Make	Depth	Type	Size	Qty	Make
Guide Shoe					Packer					Top Plug			
Float Shoe					Bridge Plug					Bottom Plug			
Float Collar					Retainer					SSR plug set			
Insert Float										Plug Container			
Stage Tool										Centralizers			

## Miscellaneous Materials

Gelling Agt	Conc	Surfactant	Conc	Acid Type	Qty	Conc	%
Treatment Fld	Conc	Inhibitor	Conc	Sand Type	Size	Qty	

## Fluid Data

Stage/Plug #: 1									
Fluid #	Stage Type	Fluid Name	Qty	Qty uom	Mixing Density lbm/gal	Yield ft <sup>3</sup> /sk	Mix Fluid Gal/sk	Rate bbl/min	Total Mix Fluid Gal/sk

Stage/Plug #: 1

Stage/Plug #: 1									
Fluid #	Stage Type	Fluid Name	Qty	Qty uom	Mixing Density lbm/gal	Yield ft <sup>3</sup> /sk	Mix Fluid Gal/sk	Rate bbl/min	Total Mix Fluid Gal/sk
1	Water Spacer		20.00	bbl	8.33	.0	.0	.0	
2	Tail Cement	VERSACEM (TM) SYSTEM (452010)	250.0	sacks	12.8	2.11	11.75		11.75
3	Displacement		61.00	bbl	8.33	.0	.0	.0	
Calculated Values		Pressures		Volumes					
Displacement		Shut In: Instant		Lost Returns		Cement Slurry		Pad	
Top Of Cement		5 Min		Cement Returns		Actual Displacement		Treatment	
Frac Gradient		15 Min		Spacers		Load and Breakdown		Total Job	
Rates									
Circulating		Mixing		Displacement		Avg. Job			
Cement Left In Pipe		Amount	0 ft	Reason	Shoe Joint				
Frac Ring # 1 @	ID	Frac ring # 2 @	ID	Frac Ring # 3 @	ID	Frac Ring # 4 @	ID		
The Information Stated Herein Is Correct				Customer Representative Signature					

*The Road to Excellence Starts with Safety*

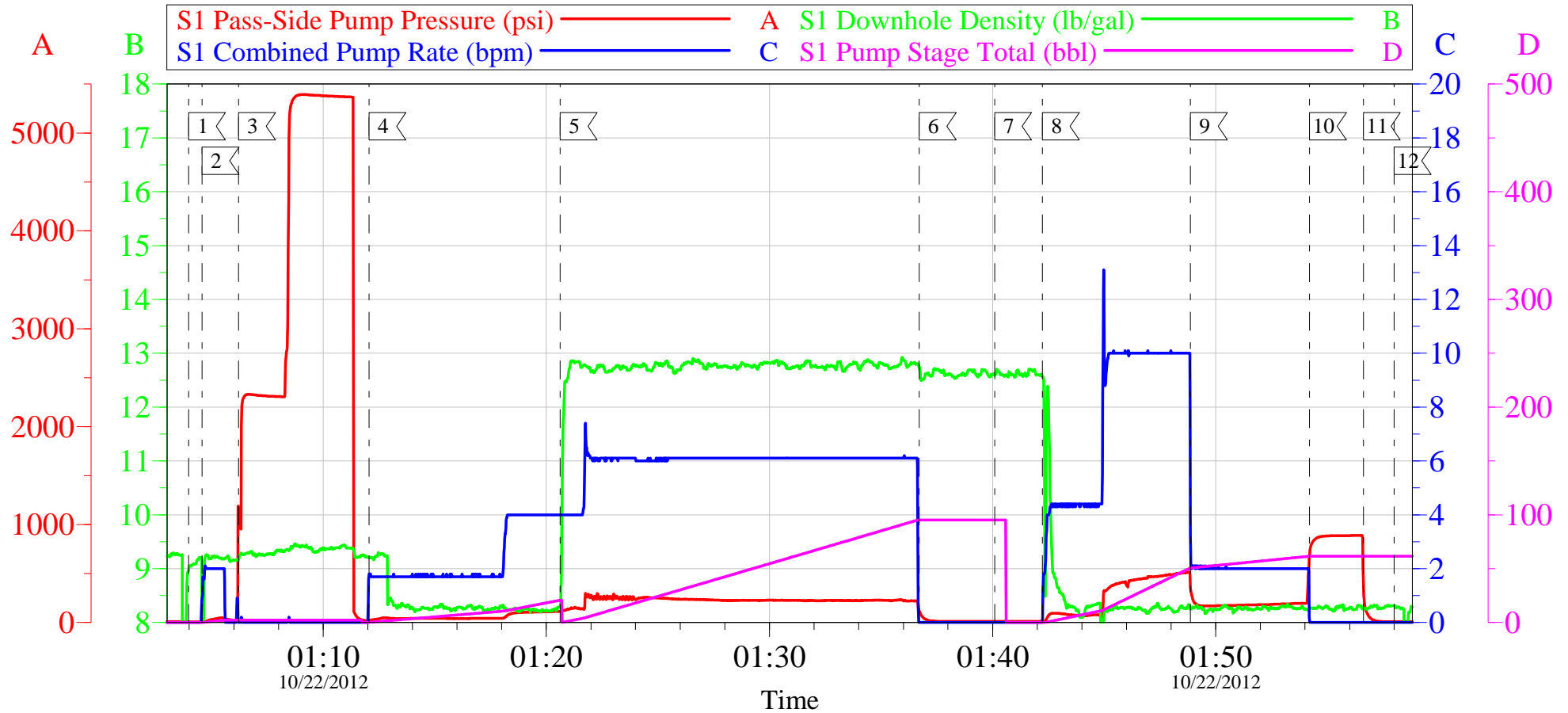
Sold To #: 300721	Ship To #: 2953870	Quote #:	Sales Order #: 9844358
Customer: WPX ENERGY ROCKY MOUNTAIN LLC-EBUS		Customer Rep: Wilson, W.C	
Well Name: PA	Well #: 524-4	API/UWI #: 05-045-15509	
Field: PARACHUTE	City (SAP): PARACHUTE	County/Parish: Garfield	State: Colorado
Legal Description:			
Lat: N 39.463 deg. OR N 39 deg. 27 min. 48.096 secs.		Long: W 108.007 deg. OR W -109 deg. 59 min. 35.462 secs.	
Contractor: NABORS 577		Rig/Platform Name/Num: NABORS 577	
Job Purpose: Cement Surface Casing			Ticket Amount:
Well Type: Development Well		Job Type: Cement Surface Casing	
Sales Person: MAYO, MARK		Srvc Supervisor: KUKUS, CHRISTOPHER	MBU ID Emp #: 413952

Activity Description	Date/Time	Cht #	Rate bbl/min	Volume bbl		Pressure psig		Comments
				Stage	Total	Tubing	Casing	
Call Out	10/21/2012 18:30							ELITE # 3
Depart Yard Safety Meeting	10/21/2012 20:30							ALL HES EMPLOYEES
Arrive At Loc	10/21/2012 22:01							HES CREW ARRIVED 1 HOUR EARLY RIG WAS SITLL PULLING DRILL PIPE HES CREW SPOTTED EQUIPMENT AND RIGGED UP PER CO-REP REQUEST
Assessment Of Location Safety Meeting	10/21/2012 22:10							ALL HES EMPLOYEES
Pre-Rig Up Safety Meeting	10/21/2012 22:15							ALL HES EMPLOYEES
Rig-Up Equipment	10/21/2012 22:20							1 F-550 PICKUP 1 HT-400 PUMP TRUCK 1 660 BULK TRUCK
Pre-Job Safety Meeting	10/22/2012 00:45							ALL HES EMPLOYEES AND RIG CREW
Start Job	10/22/2012 01:03							TD: 832 TP: 819.1 SJ: 43.38 CSG: 9 5/8 32.3# OH: 13 1/2 MUD WT 10.1 RIG CIRCULATED 16 BBLS MIN FOR 1 HOUR
Test Lines	10/22/2012 01:06					5391.0		PRESSURE TEST OK
Pump Spacer	10/22/2012 01:12		4	20	20		111.0	FRESH WATER SPACER
Activity Description	Date/Time	Cht #	Rate bbl/min	Volume bbl		Pressure psig		Comments
				Stage	Total	Tubing	Casing	

Pump Tail Cement	10/22/2012 01:20		6	93.9	93.9		255.0	250 SKS 12.8 PPG 2.11 YEILD 11.75 GAL / SK TAIL CEMENT WEIGHT VERIFIED VIA MUD SCALES THROUGH OUT TAIL CEMENT
Shutdown	10/22/2012 01:36							
Drop Plug	10/22/2012 01:40							PLUG AWAY NO PROBLEMS
Pump Displacement	10/22/2012 01:42		10	60.1	60.1		515.0	FRESH WATER DISPLACEMENT
Slow Rate	10/22/2012 01:48		2	50.1	50.1		195.0	SLOW RATE TO BUMP PLUG
Bump Plug	10/22/2012 01:54		2	60.1	60.1		195.0	BUMP PLUG @ 195 AND TOOK PRESSURE UP TO 890 PSI
Check Floats	10/22/2012 01:56							FLOATS HELD .5 BBL BACK TO DISPLACEMENT TANKS
End Job	10/22/2012 01:58							WELL HAD GOOD CIRCULATION THROUGH OUT CEMENT JOB GOT 22 BBLs OF CEMENT TO SURFACE RIG USED NO SUGAR
Pre-Rig Down Safety Meeting	10/22/2012 02:10							ALL HES EMPLOYEES
Rig-Down Equipment	10/22/2012 02:20							
Pre-Convoy Safety Meeting	10/22/2012 02:45							ALL HES EMPLOYEES
Crew Leave Location	10/22/2012 03:00							THANKS FOR USING HALLIBURTON CEMENT CHRIS KUKUS AND CREW
Other	10/22/2012 03:01							TICKET CHANGES: TOOK OFF DERRICK CHARGE, ADD HOURS, SUGAR

# WPX - PA 524-4

9 5/8 SURFACE



## Local Event Log

1 START JOB	01:03:58	2 FILL LINES	01:04:34
3 TEST LINES	01:06:13	4 PUMP FRESH WATER SPACER	01:12:03
5 PUMP TAIL CEMENT	01:20:38	6 SHUTDOWN	01:36:43
7 DROP PLUG	01:40:05	8 PUMP FRESH WATER DISPLACEMENT	01:42:14
9 SLOW RATE	01:48:52	10 BUMP PLUG	01:54:12
11 CHECK FLOATS	01:56:37	12 END JOB	01:58:00

Customer: WPX  
Well Description: PA 524-4  
Company Rep: W.C. WILSON

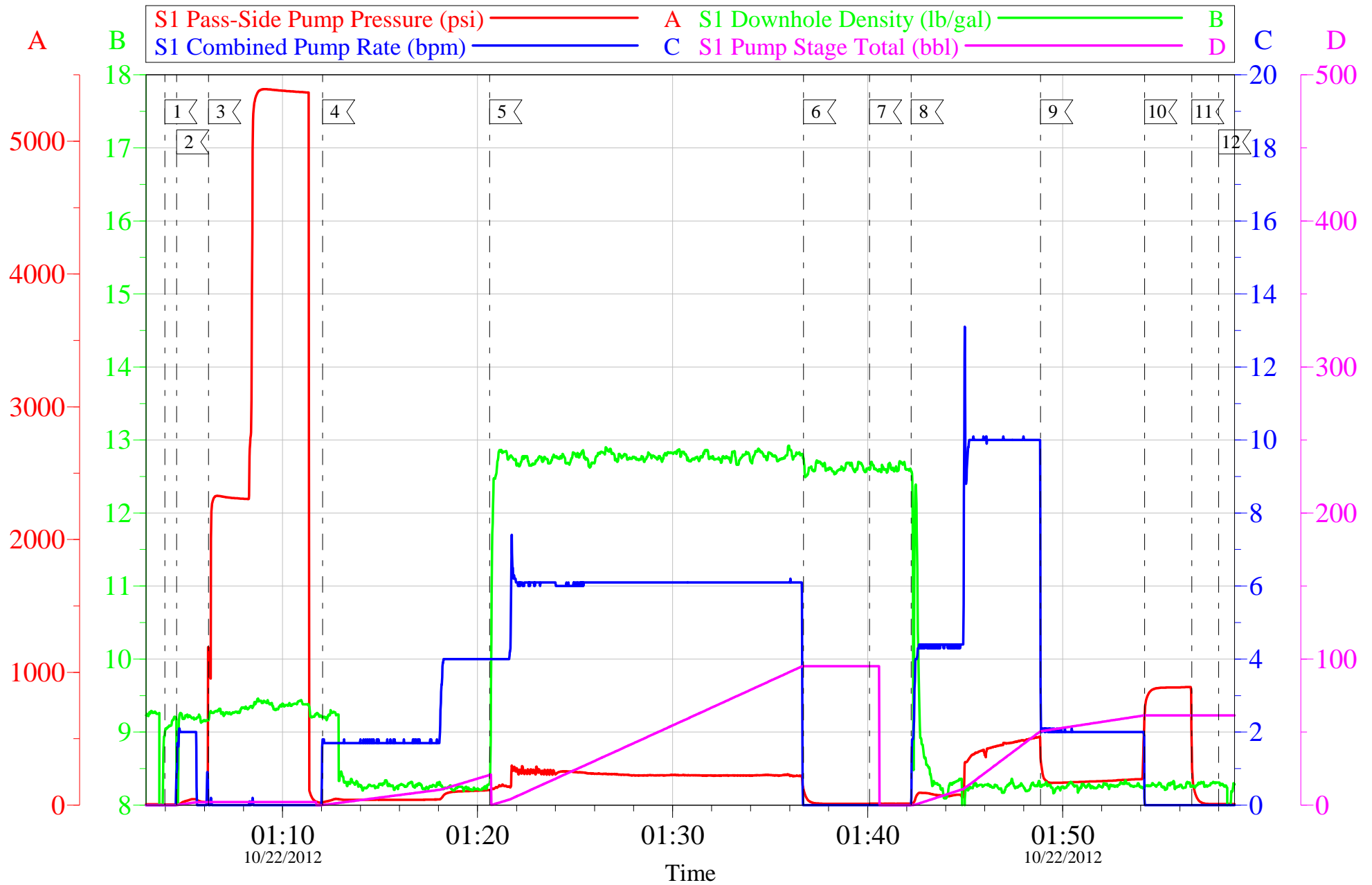
Job Date: 21-Oct-2012  
Job Type: SURFACE  
Cement Supervisor: CHRIS KUKUS

Sales Order #: 9844358  
ADC Used: YES  
Elite # 3: WESLEY GOWEN

OptiCem v6.4.10  
22-Oct-12 02:00

# WPX - PA 524-4

9 5/8 SURFACE



Customer: WPX  
Well Description: PA 524-4  
Company Rep: W.C. WILSON

Job Date: 21-Oct-2012  
Job Type: SURFACE  
Cement Supervisor: CHRIS KUKUS

Sales Order #: 9844358  
ADC Used: YES  
Elite # 3: WESLEY GOWEN

OptiCem v6.4.10  
22-Oct-12 02:00

# HALLIBURTON

## Water Analysis Report

Company: WPX  
Submitted by: CHRIS KUKUS  
Attention: J. TROUT/C.MARTINEZ  
Lease: PA  
Well #: 524-4

Date: 10/21/2012  
Date Rec.: 10/21/2012  
S.O.#: 9844358  
Job Type: SURFACE

Specific Gravity	<i>MAX</i>	<b>1</b>
pH	<i>8</i>	<b>7</b>
Potassium (K)	<i>5000</i>	<b>0</b> Mg / L
Calcium (Ca)	<i>500</i>	<b>120</b> Mg / L
Iron (FE2)	<i>300</i>	<b>0</b> Mg / L
Chlorides (Cl)	<i>3000</i>	<b>0</b> Mg / L
Sulfates (SO <sub>4</sub> )	<i>1500</i>	<b>UNDER 200</b> Mg / L
Chlorine (Cl <sub>2</sub> )		<b>0</b> Mg / L
Temp	<i>40-80</i>	<b>52</b> Deg
Total Dissolved Solids		<b>130</b> Mg / L

Respectfully: CHRIS KUKUS

Title: CEMENTING SUPERVISOR

Location: Grand Junction, CO

NOTICE:

This report is limited to the described sample tested. Any person using or relying on this report agrees that Halliburton shall not be liable for any loss or damage whether due to act or omission resulting from such report or its

<b>Sales Order #:</b> 9844358	<b>Line Item:</b> 10	<b>Survey Conducted Date:</b> 10/22/2012
<b>Customer:</b> WPX ENERGY ROCKY MOUNTAIN LLC-EBUS		<b>Job Type (BOM):</b> CMT SURFACE CASING BOM
<b>Customer Representative:</b> W.C. WILSON		<b>API / UWI: (leave blank if unknown)</b> 05-045-15509
<b>Well Name:</b> PA		<b>Well Number:</b> 524-4
<b>Well Type:</b> Development Well	<b>Well Country:</b> United States of America	
<b>H2S Present:</b> No	<b>Well State:</b> Colorado	<b>Well County:</b> Garfield

Dear Customer,

We hope that you were satisfied with the service quality of this job performed by Halliburton. It is the aim of our management and service personnel to deliver equipment and service of a standard unmatched in the service sector of the energy industry.

Please take the time to let us know if our performance met with your satisfaction. Please be as critical as possible to ensure we constantly improve our service. Your comments are of great value to us and are intended for the exclusive use of Halliburton.

### CUSTOMER SATISFACTION SURVEY

CATEGORY	CUSTOMER SATISFACTION RESPONSE	
Survey Conducted Date	The date the survey was conducted	10/22/2012
Survey Interviewer	The survey interviewer is the person who initiated the survey.	CHRISTOPHER KUKUS (HX35027)
Customer Participation	Did the customer participate in this survey? (Y/N)	Yes
Customer Representative	Enter the Customer representative name	W.C. WILSON
HSE	Was our HSE performance satisfactory? Circle Y or N	Yes
Equipment	Were you satisfied with our Equipment? Circle Y or N	Yes
Personnel	Were you satisfied with our people? Circle Y or N	Yes
Customer Comment	Customer's Comment	

CUSTOMER SIGNATURE

<b>Sales Order #:</b> 9844358	<b>Line Item:</b> 10	<b>Survey Conducted Date:</b> 10/22/2012
<b>Customer:</b> WPX ENERGY ROCKY MOUNTAIN LLC-EBUS		<b>Job Type (BOM):</b> CMT SURFACE CASING BOM
<b>Customer Representative:</b> W.C. WILSON		<b>API / UWI: (leave blank if unknown)</b> 05-045-15509
<b>Well Name:</b> PA		<b>Well Number:</b> 524-4
<b>Well Type:</b> Development Well	<b>Well Country:</b> United States of America	
<b>H2S Present:</b> No	<b>Well State:</b> Colorado	<b>Well County:</b> Garfield

### KEY PERFORMANCE INDICATORS

General	
<b>Survey Conducted Date</b> The date the survey was conducted	10/22/2012

Cementing KPI Survey	
<b>Type of Job</b> Select the type of job. (Cementing or Non-Cementing)	0
<b>Select the Maximum Deviation range for this Job</b> What is the highest deviation for the job you just completed? This may not be the maximum well deviation.	Vertical
<b>Total Operating Time (hours)</b> Total Operating Hours Including Rig-up, Pumping, Rig-down. Enter in decimal format.	3
<b>HSE Incident, Accident, Injury</b> HSE Incident, Accident, Injury. This should be recordable incidents only.	No
<b>Was the job purpose achieved?</b> Was the job delivered correctly as per customer agreed design?	Yes
<b>Operating Hours (Pumping Hours)</b> Total number of hours pumping fluid on this job. Enter in decimal format.	1
<b>Customer Non-Productive Rig Time (hrs)</b> Lost time due to Halliburton in the start, execution, or completion of an ordered service or product, or delays in a follow-on service. Enter in decimal format. 0 if none.	0
<b>Type of Rig Classification Job Was Performed</b> Type Of Rig (classification) Job Was Performed On	Drilling Rig (Portable)
<b>Number Of JSAs Performed</b> Number Of Jsas Performed	6
<b>Number of Unplanned Shutdowns</b> Unplanned shutdown is when injection stops for any period of time.	0
<b>Was this a Primary Cement Job (Yes / No)</b>	Yes

<b>Sales Order #:</b> 9844358	<b>Line Item:</b> 10	<b>Survey Conducted Date:</b> 10/22/2012
<b>Customer:</b> WPX ENERGY ROCKY MOUNTAIN LLC-EBUS		<b>Job Type (BOM):</b> CMT SURFACE CASING BOM
<b>Customer Representative:</b> W.C. WILSON		<b>API / UWI: (leave blank if unknown)</b> 05-045-15509
<b>Well Name:</b> PA		<b>Well Number:</b> 524-4
<b>Well Type:</b> Development Well	<b>Well Country:</b> United States of America	
<b>H2S Present:</b> No	<b>Well State:</b> Colorado	<b>Well County:</b> Garfield

Primary Cement Job= Casing job, Liner job, or Tie-back job.	
<b>Did We Run Wiper Plugs?</b> Did We Run Top And Bottom Casing Wiper Plugs?	Top
<b>Mixing Density of Job Stayed in Designed Density Range (0-100%)</b> Density Range defined as +/- .20 ppg. Calculation: Total BBLs cement mixed at designed density divided by total BBLs of cement multiplied by 100	90
<b>Was Automated Density Control Used?</b> Was Automated Density Control (ADC) Used ?	Yes
<b>Pump Rate (percent) of Job Stayed At Designed Pump Rate</b> Pump Rate range defined as +/- 1bbl/min. Calculation: Total BBLs of fluid pumped at the designed rate divided by Total BBLs of fluid pumped, multiplied by 100	90
<b>Nbr of Remedial Sqz Jobs Rqd - Competition</b> Number Of Remedial Squeeze Jobs Required After Primary Job Performed By Competition	0
<b>Nbr of Remedial Plug Jobs Rqd - HES</b> Number Of Remedial Plug Jobs Needed After Primary Plug Pumped By HES	0
<b>Nbr of Remedial Sqz Jobs Rqd - HES</b> Number Of Remedial Squeeze Jobs Required After Primary Job Performed By HES	0