

Project: Wattenberg Field
Site: AE (Sec.6-T6N-R62W) Weld County, CO
Well: Wells Ranch AE05-67-1HN
Wellbore: Original Drilling
Design: APD - Rev 0

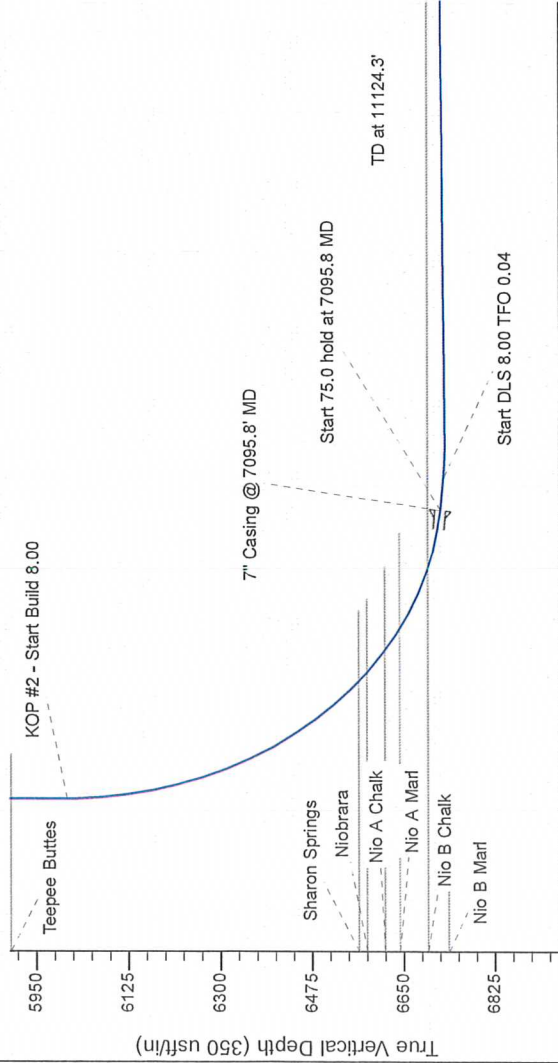
Northern Region Drilling

Geodetic System: US State Plane 1983
Datum: North American Datum 1983
Ellipsoid: GRS 1980
Zone: Colorado Northern Zone
System Datum: Mean Sea Level

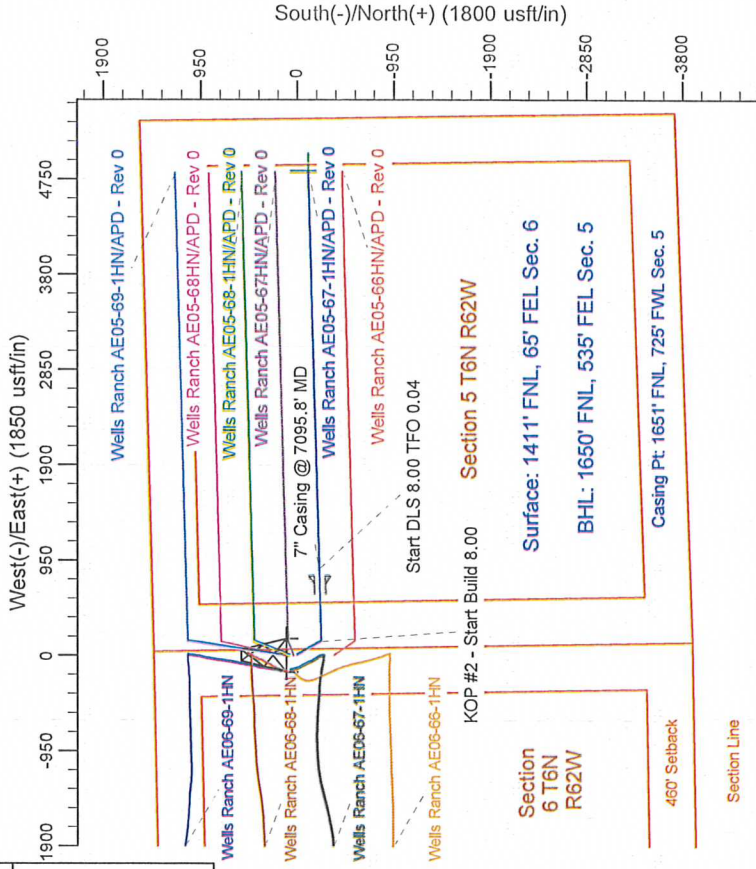
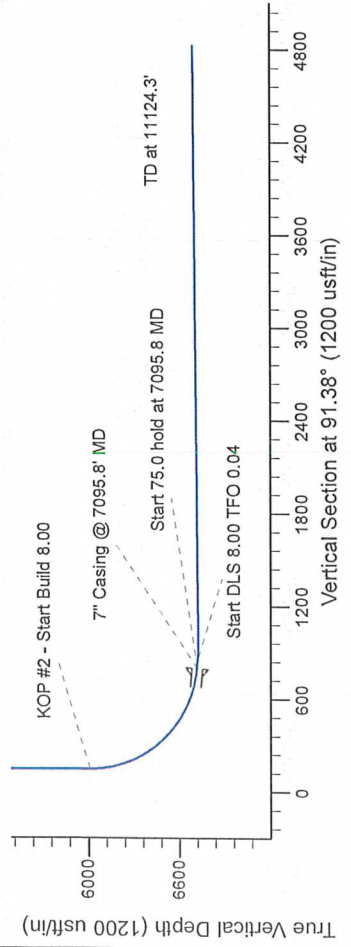
SECTION DETAILS

Sec	MD	Inc	Azi	TVD	+NLS	+E/W	Dleg	TFace	VSect	Target
1	0.0	0.00	0.00	0.0	0.0	0.0	0.00	0.00	0.0	
2	2000.0	0.00	0.00	2000.0	0.0	0.0	0.00	0.00	0.0	
3	2478.9	12.00	149.64	2476.4	-43.2	25.3	2.50	149.64	26.3	
4	3330.7	12.00	149.64	3308.6	-195.8	114.7	0.00	180.00	119.4	
5	3810.6	0.00	0.00	3785.0	-239.0	140.0	0.00	180.00	145.7	
6	6033.3	0.00	0.00	6007.7	-239.0	140.0	0.00	180.00	145.7	
7	7095.8	85.00	88.49	6721.2	-221.8	793.5	8.00	88.49	798.7	
8	7170.8	85.00	88.49	6727.7	-219.8	868.2	0.00	0.00	873.3	
9	7238.3	90.40	88.49	6730.4	-218.0	935.6	8.00	0.04	940.6	
10	11124.3	90.40	88.49	6703.3	-115.9	4820.2	0.00	0.00	4821.6	

Wells Ranch AE05-67-1HN BHL 1650FNL 535' FEL



Vertical Section at 91.38° (420 usft/in)



T G M

Azimuths to Grid North
True North: -0.74°
Magnetic North: 7.66°

Magnetic Field
Strength: 53099.6snT
Dip Angle: 67.17°
Date: 12/20/2012
Model: IGRF200510

WELL DETAILS: Wells Ranch AE05-67-1HN			
Northing	Ground Level	Longitude	
1434006.73	4933.0	40.519120	-104.356250
Easting			
3317977.68	40.519120	-104.356250	
Latitude			
Plan: APD - Rev 0 (Wells Ranch AE05-67-1HN/Original Drilling)			
Created By: Carrie Willers		Date: 17:38, January 02 2013	
Checked:		Date:	
Reviewed:		Date:	
Approved:		Date:	