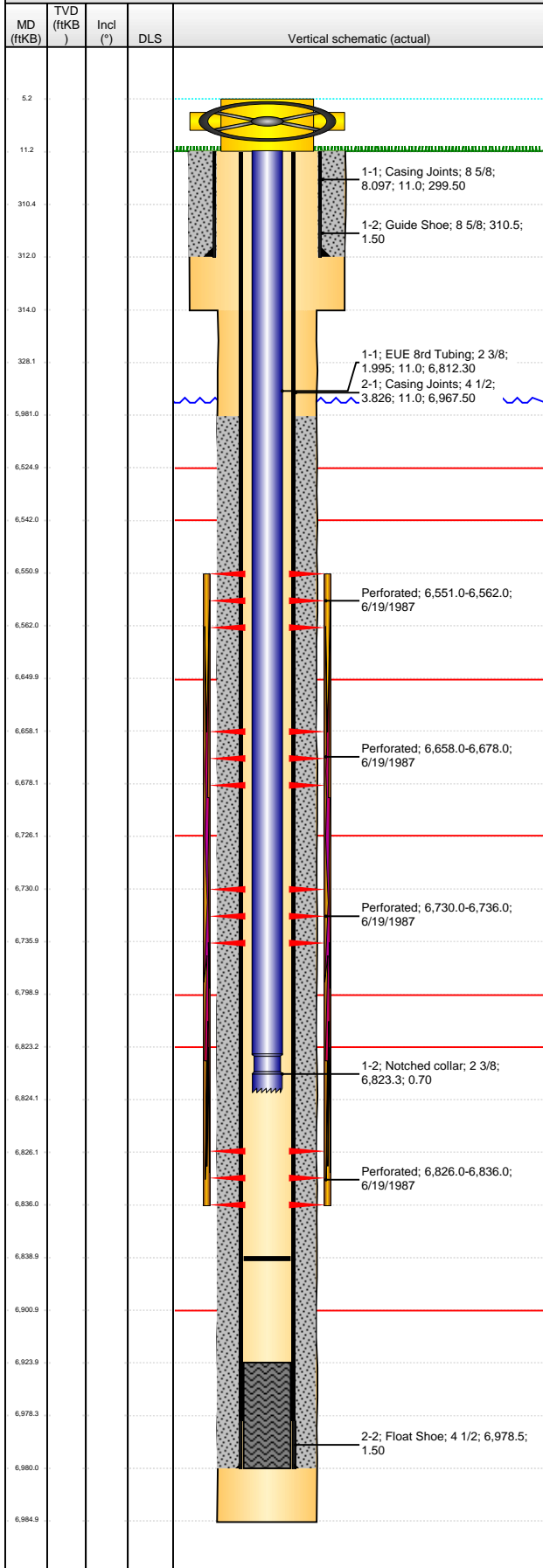


Well Name: PETRIKIN A34-16

VERTICAL - ORIGINAL HOLE, 2/14/2013 12:59:51 PM



Well Header

API 05-123-13478	Business Unit WATTENBERG	District 15	Well Config VERTICAL
Original KB Elevation (ft) 4,670.00	KB - GL / MSL (ftKB) 11.00	Spud Date 6/13/1987	P & A Date

Comment

Directions To Well

Congressional Location

Quarter 1	Quarter 2	Quarter 3 SE	Quarter 4 SE	Section 34	Township 6 N	Twnshp N...	Range 64	Rng E/W Dir W
-----------	-----------	-----------------	-----------------	---------------	-----------------	-------------	-------------	------------------

Bottom Hole Location

North-South Distance (ft)	From N or S Line	East-West Distance (ft)	From E or W Line
---------------------------	------------------	-------------------------	------------------

Plug Back Total Depths

Date	Depth (ftKB)	Method	Com
6/19/1987	6,924.0	CASED HOLE LOG	DEPTH LOGGER ON CBL
9/2/1999	6,839.0	TAG	TAG UP

Wellbore Sections

Section Des	Size (in)	Act Top (ftKB)	Act Btm (ftKB)
SURFACE	12 1/4	11.0	314.0
PRODUCTION	7 7/8	314.0	6,985.0

Zone Statuses

Zone Name	Status Date	Status	Job
CODELL	7/14/1987	PR	DRILLING/COMPLETION - ORIGINAL, 6/13/1987 00:00
NIOBRARA	7/14/1987	PR	DRILLING/COMPLETION - ORIGINAL, 6/13/1987 00:00

Casing Strings

Surface, 312.0ftKB

Casing Description	Run Date	OD (in)	Wt/Len (l...)	Grade	Top (ftKB)	Set Depth...
Surface	6/13/1987	8 5/8	24.00	?	11.0	312.0

Production, 6,980.0ftKB

Casing Description	Run Date	OD (in)	Wt/Len (l...)	Grade	Top (ftKB)	Set Depth...
Production	6/17/1987	4 1/2	15.10	?	11.0	6,980.0

Cement

Description	Top Depth (ftKB)	Bottom Depth (ftKB)
SURFACE CASING CEMENT	11.0	312.0
PRODUCTION CASING CEMENT	5,981.0	6,980.0

Tubing Components

Item Des	OD (in)	Wt (lb/ft)	Grade	Jts	Len (ft)	Btm (ftKB)	Btm (TVD) (ftKB)
EUE 8rd Tubing	2 3/8	4.70	?	220	6,812.30	6,823.3	
Notched collar	2 3/8				0.70	6,824.0	

Perforation Data

Zone	Bnch/St g	Entered Shot Total	Top (ftKB)	Btm (ftKB)	Date
NIOBRARA, ORIGINAL HOLE	A	3	6,551.00	6,562.00	6/19/1987
NIOBRARA, ORIGINAL HOLE	B	5	6,658.00	6,678.00	6/19/1987
NIOBRARA, ORIGINAL HOLE	C	2	6,730.00	6,736.00	6/19/1987
CODELL, ORIGINAL HOLE		5	6,826.00	6,836.00	6/19/1987

Stimulations & Treatments

Date	Zone	Primary Job Type
6/20/1987	NIOBRARA-CODELL, ORIGINAL HOLE	DRILLING/COMPLETION - ORIGINAL
Technical Result	Tech Result Details	Tech Result Note

Comment
LIMITED ENTRY

Other In Hole

Run Date	Des	OD (in)	Top (ftKB)	Btm (ftKB)

Logs

Date	Type	Top (ftKB)	Btm (ftKB)
6/16/1987	COMPENSATED DENSITY	3,500.0	6,982.0
6/16/1987	INDUCTION	315.0	6,978.0
6/19/1987	CBL/CCL/GR	6,000.0	6,916.0
6/19/1987	PERFORATION	6,700.0	6,800.0