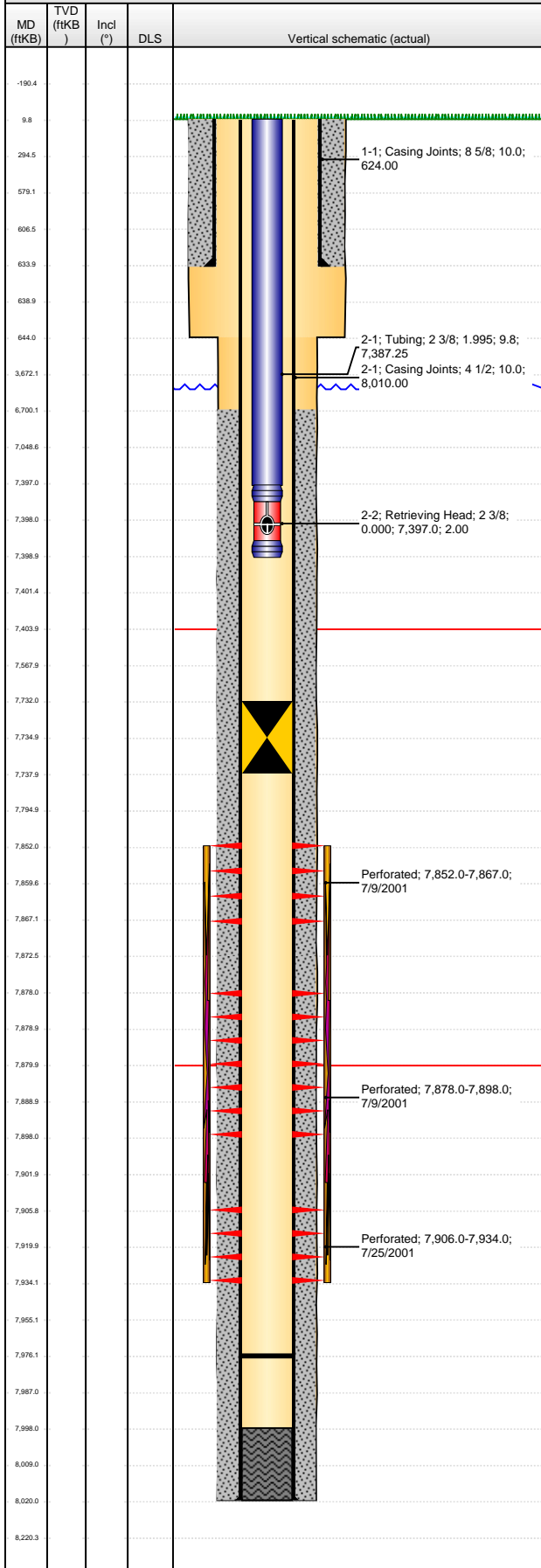


Well Name: BRATTAIN L12-11JI

VERTICAL - ORIGINAL HOLE, 2/14/2013 1:04:01 PM



Well Header

API 05-123-20428	Business Unit WATTENBERG	District 15	Well Config VERTICAL
Original KB Elevation (ft) 4,995.00	KB - GL / MSL (ftKB) 10.00	Spud Date 6/23/2001	P & A Date

Comment
batt w/Bell L12-11 9/01

Directions To Well
RD 34 & 35, E 3/10, N 2/10, E INTO.

Congressional Location

Quarter 1	Quarter 2	Quarter 3	Quarter 4	Section	Township	Twnshp N...	Range	Rng E/W Dir
		NE	SW	12		3 N	66	W

Bottom Hole Location

North-South Distance (ft)	From N or S Line	East-West Distance (ft)	From E or W Line
---------------------------	------------------	-------------------------	------------------

Plug Back Total Depths

Date	Depth (ftKB)	Method	Com
6/29/2001	7,976.0	CASED HOLE LOG	DEPTH-LOGGER/CBL

Wellbore Sections

Section Des	Size (in)	Act Top (ftKB)	Act Btm (ftKB)
SURFACE	12 1/4	10.0	644.0
PRODUCTION	7 7/8	644.0	8,020.0

Zone Statuses

Zone Name	Status Date	Status	Job
J SAND	9/10/2001	PR	DRILLING/COMPLETION - ORIGINAL, 6/24/2001 00:00

Casing Strings

Surface Casing, 634.0ftKB

Casing Description	Run Date	OD (in)	Wt/Len (l...)	Grade	Top (ftKB)	Set Depth...
Surface Casing	6/24/2001	8 5/8	24.00	?	10.0	634.0

Production, 8,020.0ftKB

Casing Description	Run Date	OD (in)	Wt/Len (l...)	Grade	Top (ftKB)	Set Depth...
Production	6/29/2001	4 1/2	11.60	M-80	10.0	8,020.0

Cement

Description	Top Depth (ftKB)	Bottom Depth (ftKB)
SURFACE CASING CEMENT	10.0	634.0
PRODUCTION CASING CEMENT	6,700.0	8,020.0

Tubing Components

Item Des	OD (in)	Wt (lb/ft)	Grade	Jts	Len (ft)	Btm (ftKB)	Btm (TVD) (ftKB)
Tubing	2 3/8	4.70	J-55	225	7,387.25	7,397.1	
Retrieving Head	2 3/8	0.00	N-80	1	2.00	7,399.1	

Perforation Data

Zone	Bnch/St g	Entered Shot Total	Top (ftKB)	Btm (ftKB)	Date
J SAND, ORIGINAL HOLE		31	7,852.00	7,867.00	7/9/2001
J SAND, ORIGINAL HOLE		41	7,878.00	7,898.00	7/9/2001
J SAND, ORIGINAL HOLE		56	7,906.00	7,934.00	7/25/2001

Stimulations & Treatments

Date	Zone	Primary Job Type
9/6/2001	J SAND, ORIGINAL HOLE	DRILLING/COMPLETION - ORIGINAL
Technical Result	Tech Result Details	Tech Result Note

Comment
MIRU BJ Services to 2 3/8" tubing and 4 1/2" casing. The J-Sand was frac'd via TRIPLE ENTRY from 7,852' - 7,934'. Performed reverse step rate test. Calculated 10 perfs open out of 126, NWB friction = 433 psi, perf friction = 1347 psi, leakoff Coef. =

Other In Hole

Run Date	Des	OD (in)	Top (ftKB)	Btm (ftKB)
9/13/2012	Retrievable Bridge Plug	3.99	7,732.0	7,738.0

Logs

Date	Type	Top (ftKB)	Btm (ftKB)
6/29/2001	COMPENSATED DENSITY	4,400.0	8,006.0
6/29/2001	DIFL/DENS/GR/GRD/CAL		
7/6/2001	CBL/CCL/GR		