

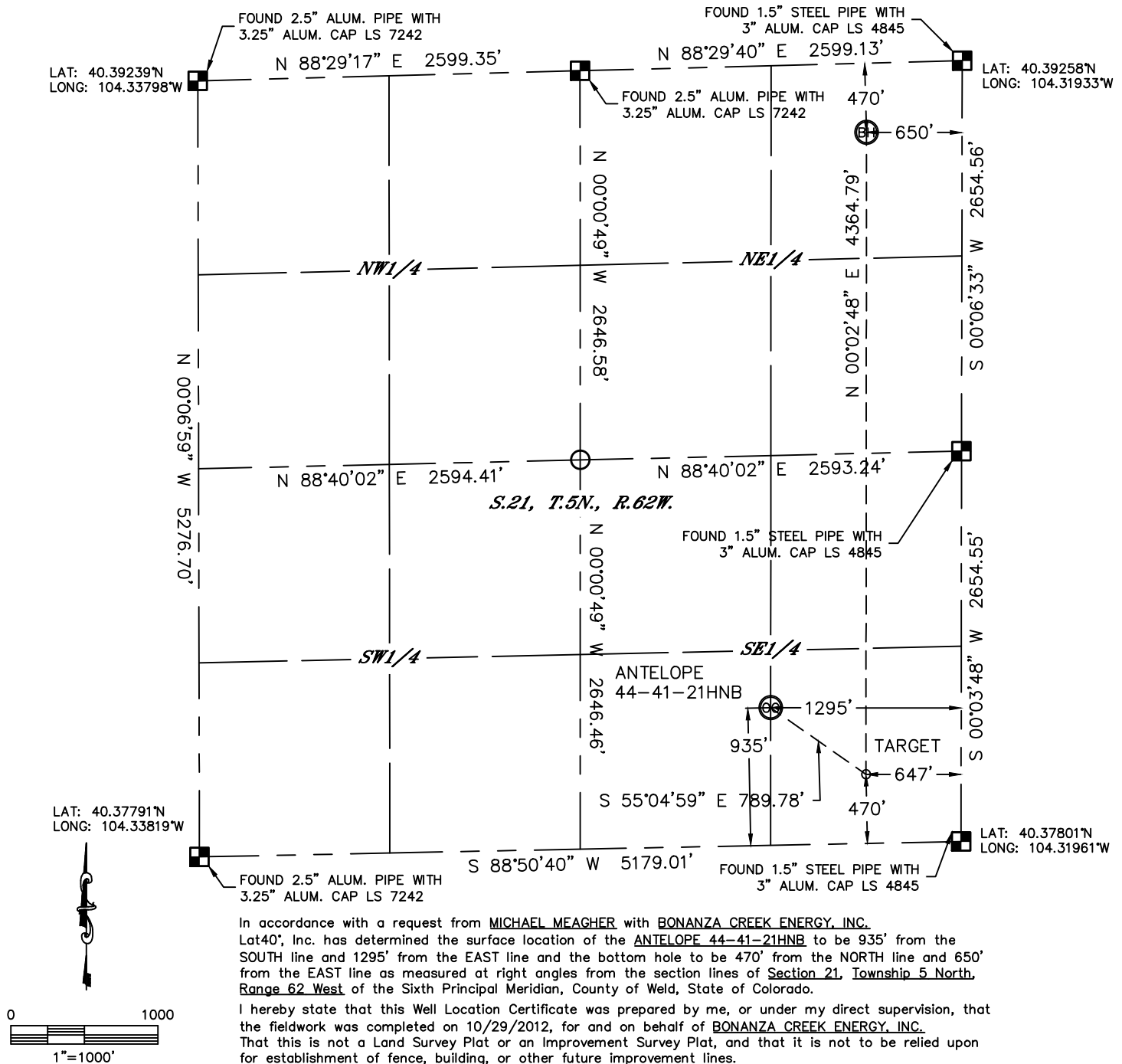


Lat40°, Inc. 1635 Foxtrail Drive, Suite 325 Loveland, CO 970-776-3321

# WELL LOCATION CERTIFICATE

THIS MAP DOES NOT REPRESENT A BOUNDARY SURVEY

SECTION: 21  
TOWNSHIP: 5N  
RANGE: 62W



## NOTE:

- 1) Bearings shown are Grid Bearings of the Colorado State Plane Coordinate System, North Zone, North American Datum 1983/2007. The lineal dimensions as contained herein are based upon the "U.S. Survey Foot."
- 2) Ground elevations are based on an observed GPS elevation (NAVD 1988 DATUM).
- 3) IMPROVEMENTS: See LOCATION DRAWING for all visible improvements within 400' of disturbed area.
- 4) SURFACE USE: RANGELAND
- 5) INSTRUMENT OPERATOR: BRIAN ROTTINGHAUS

## SURFACE LOCATION

LAT: 40.38055°N  
LONG: 104.32421°W  
PDOP: 2.8  
ELEV: 4668'  
1/4,1/4: SE1/4SE1/4  
NEAREST PROPERTY LINE: 935' SOUTH

## TARGET

LAT: 40.37929°N  
LONG: 104.32191°W  
1/4,1/4: SE1/4SE1/4

## BOTTOM HOLE

LAT: 40.39126°N  
LONG: 104.32169°W  
1/4,1/4: NE1/4NE1/4

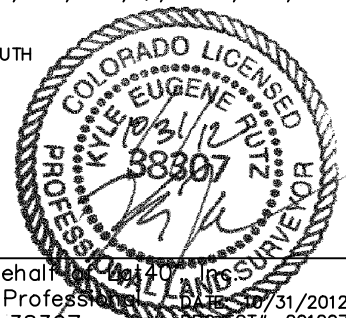
## NOTE

According to Colorado law, you must commence any legal action based upon any defect in this W.L.C. within three years after you discover such defect. In no event, may any action based upon any defect in this survey be commenced more than ten years after the date of the certificate shown hereon. (13-80-105 C.R.S.)

## LEGEND

- = ALIQUOT MONUMENT AS DESCRIBED  
○ = CALCULATED POSITION

Kyle E. Rutz—On behalf of  
Colorado Licensed Professional  
Land Surveyor No. 38307



DATE: 10/31/2012  
PROJECT#: 2012071