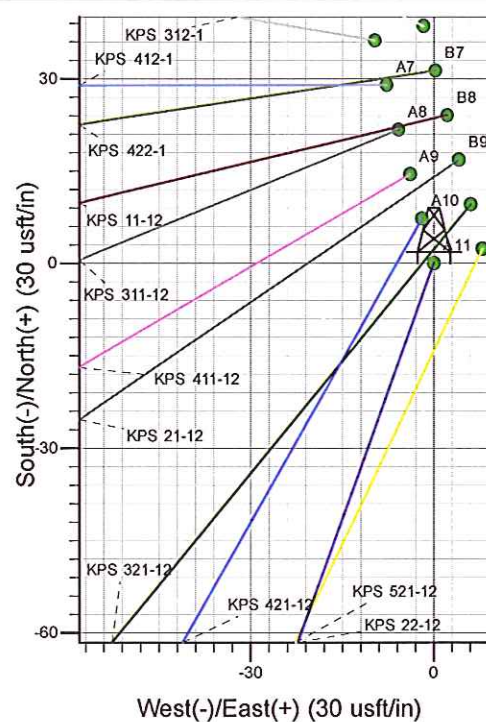
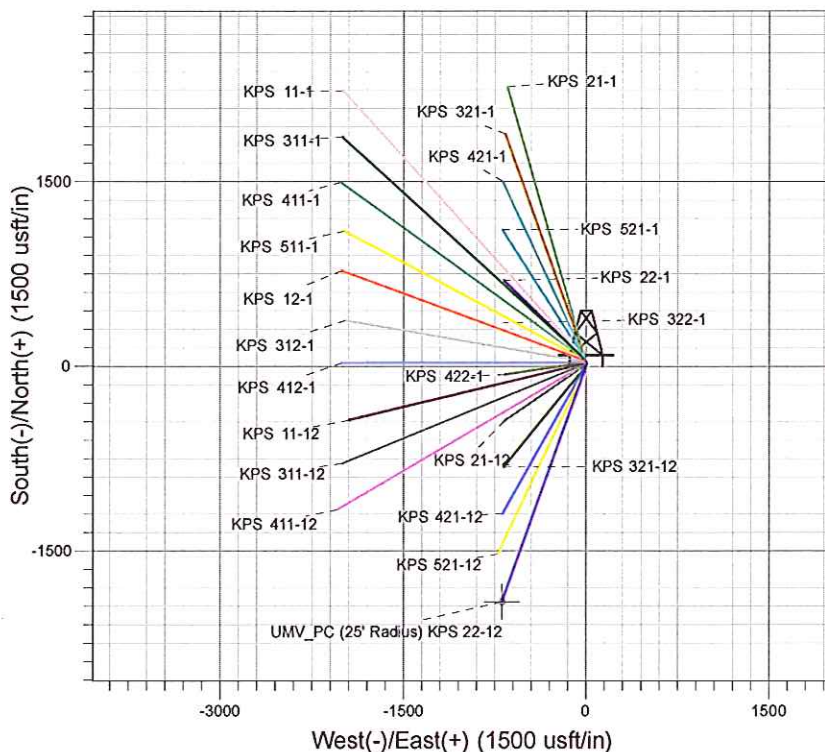
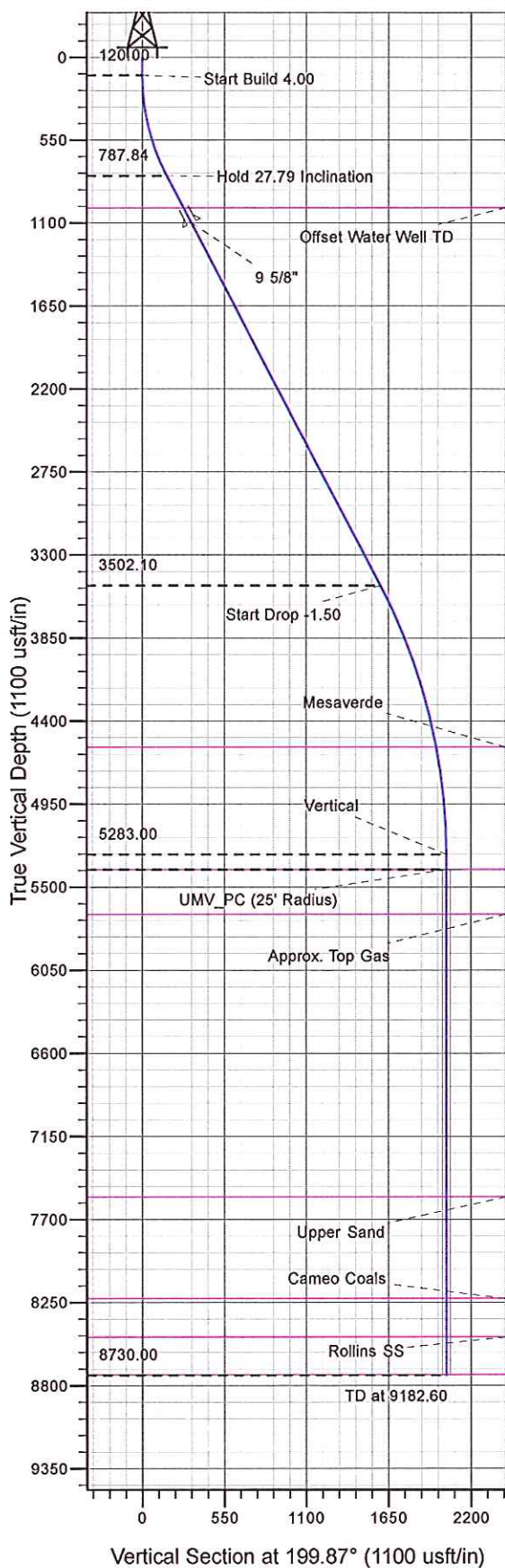




Well Name: KPS 22-12
 Surface Location: KPS 22-1 Pad
 North American Datum 1983 , US State Plane 1983, Colorado Central Zone
 Ground Elevation: 7349.00
 +N/-S 0.00 +E/-W 0.00 Northing 1602795.10 Easting 2434800.30 Latitude 39.47134 Longitude -107.50229 Slot A11
 KELLY BUSHING @ 7375.00usft (Original Well Elev)



Project: Sec. 01-T7S-R91W
 Site: KPS 22-1 Pad
 Well: KPS 22-12
 Design #1 07Aug12 kjs



Azimuths to True North
 Magnetic North: 9.98°
 Magnetic Field
 Strength: 52173.4snT
 Dip Angle: 65.78°
 Date: 8/7/2012
 Model: IGRF2010

ANNOTATIONS

MD	Inc	Azi	TVD	+N/-S	+E/-W	Vsect	Departure	Annotation
120.00	0.00	0.00	120.00	0.00	0.00	0.00	0.00	Start Build 4.00
814.76	27.79	199.87	787.84	-155.38	-56.15	165.21	165.21	Hold 27.79 Inclination
3882.90	27.79	199.87	3502.10	-1500.71	-542.36	1595.70	1595.70	Start Drop -1.50
5735.60	0.00	0.00	5283.00	-1915.05	-692.10	2036.28	2036.28	Vertical
5835.60	0.00	0.00	5383.00	-1915.05	-692.10	2036.28	2036.28	UMV_PC
9182.60	0.00	0.00	8730.00	-1915.05	-692.10	2036.28	2036.28	TD at 9182.60