

T6N

20

19

WHITNEY

PROPOSED LOCATION:
 RAINDANCE FD #29-31D, #29-11D,
 #29-4D, #20-25D, #20-18D,
 #20-32D, #20-33D, #20-34D,
 #19-14D & #29-32D

1000' OFFSET
 DOUBLE E & G INC.
 WATER WELL
 PERMIT #222173 -
 DEPTH TO BOTTOM 200'

RAINDANCE AQUATIC INVESTMENTS LLC
 WATER WELL
 PERMIT #62724-F -
 DEPTH TO BOTTOM 25'

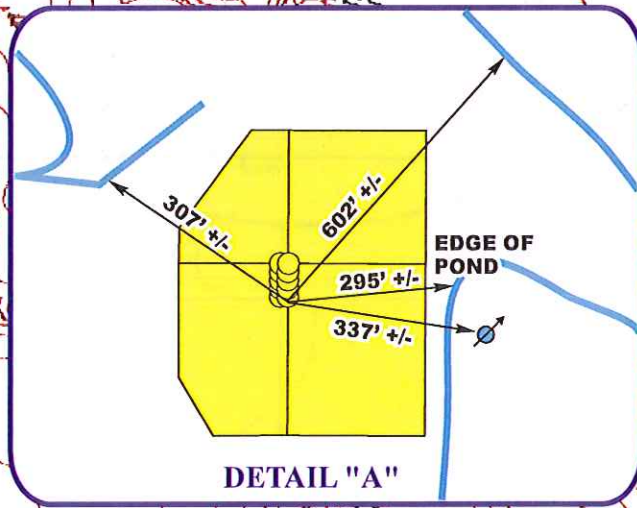
SEE DETAIL "A"

River

29

EATON

R
67
W



LEGEND:

- EXISTING DRAINAGE
- 1000' OFFSET BOUNDARY
- WATER WELL

GREAT WESTERN OIL & GAS COMPANY

N RAINDANCE FD #29-31D, #29-11D, #29-4D, #20-25D, #20-18D,
 #20-32D, #20-33D, #20-34D, #19-14D & #29-32D
 SECTION 30, T6N, R67W, 6th P.M.
 NE 1/4 NE 1/4



Uintah Engineering & Land Surveying
 85 South 200 East Vernal, Utah 84078
 (435) 789-1017 * FAX (435) 789-1813



HYDROLOGY MAP		10 04 12 MONTH DAY YEAR	W TOPO
SCALE: 1" = 1000'	DRAWN BY: J.L.H.	REV: 12-19-12 B.D.H.	