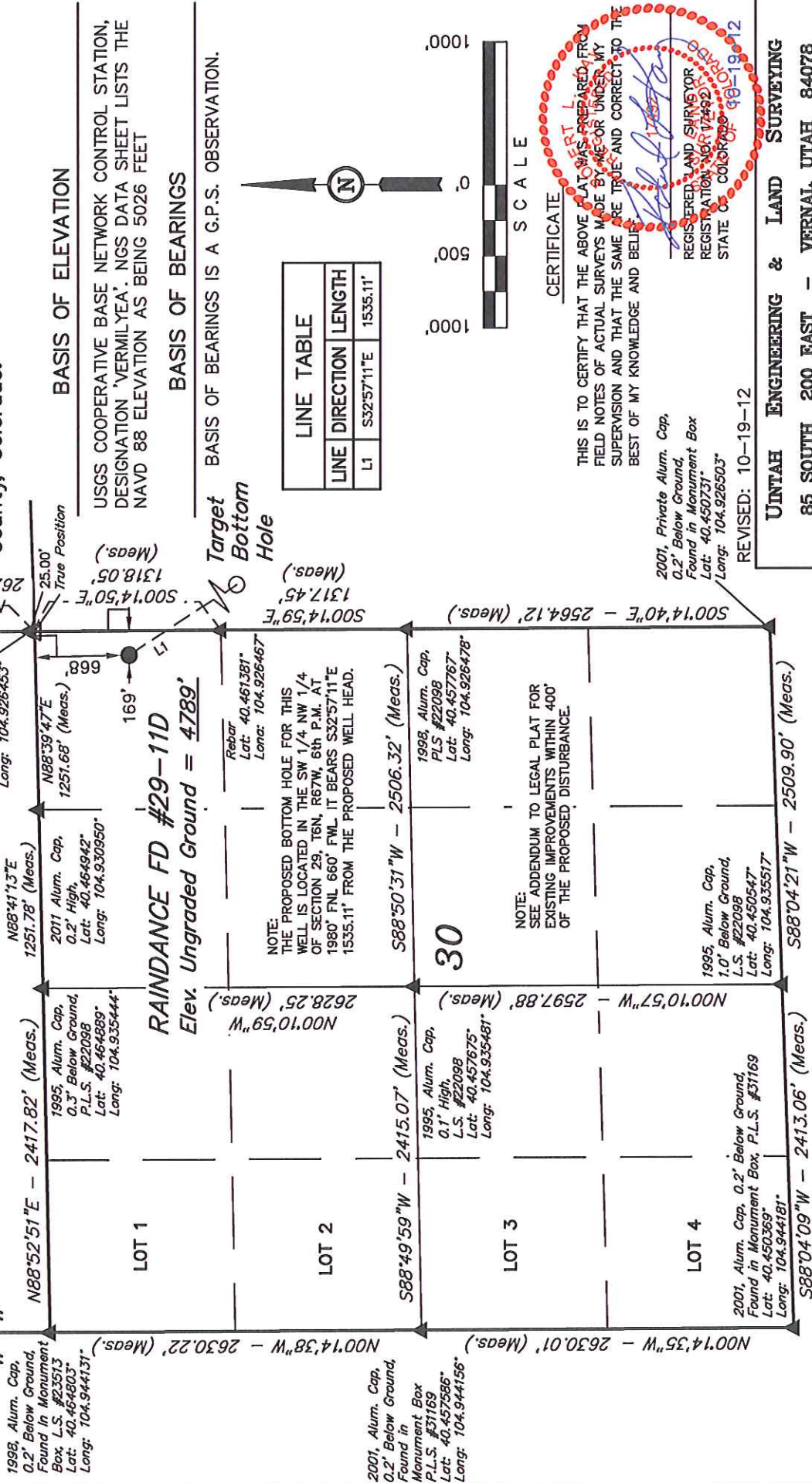


T6N, R67W, 6th P.M.

W 1/4 Cor. Sec. 20
1998, Alum. Cap. 0.4' Below Ground,
Found in Monument Box at Rd.
Intersection
Lat: 40.472189°
Long: 104.926436°

GREAT WESTERN OIL & GAS COMPANY

Well location, RAINDANCE FD #29-11D (SURFACE LOCATION), located as shown in the NE 1/4 NE 1/4 of Section 30, T6N, R67W, 6th P.M., Weld County, Colorado.



LEGEND:

- = 90° SYMBOL
- = PROPOSED WELL HEAD.
- ▲ = SECTION CORNERS LOCATED.
- △ = SECTION CORNERS RE-ESTABLISHED (Not Set on Ground.)

PDOP = 2.0

NAD 83 (SURFACE LOCATION)	
LATITUDE = 40°27'47.37" (40.463158)	
LONGITUDE = 104°55'37.44" (104.927067)	
NAD 27 (SURFACE LOCATION)	
LATITUDE = 40°27'47.43" (40.463175)	
LONGITUDE = 104°55'35.53" (104.926536)	

SCALE 1" = 1000'

DATE SURVEYED: 09-28-12

DATE DRAWN: 10-02-12

REFERENCES: G.L.O. PLAT

PARTY: L.S. G.W. J.W.

WEATHER: WARM

FILE: GREAT WESTERN OIL & GAS COMPANY

UNTAH ENGINEERING & LAND SURVEYING
85 SOUTH 200 EAST - VERNAL, UTAH 84078
(435) 789-1017

CERTIFICATE

THIS IS TO CERTIFY THAT THE ABOVE PLAT WAS PREPARED FROM FIELD NOTES OF ACTUAL SURVEYS MADE BY ME OR UNDER MY SUPERVISION AND THAT THE SAME ARE TRUE AND CORRECT TO THE BEST OF MY KNOWLEDGE AND BELIEF.

2001, Private Alum. Cap.
0.2' Below Ground,
Found in Monument Box
Lat: 40.450731°
Long: 104.926503°

REVISED: 10-19-12

REGISTERED LAND SURVEYOR
REGISTRATION NO. 172492
STATE OF COLORADO 98-19-12

