

GREAT WESTERN OIL & GAS COMPANY

1997 Alum. Cap 0.3'
Above Ground
Lat: 40.465086°
Long: 104.921761°

1000000

$N00^{\circ}10'59''W - 2628.25' (Meas.)$

169' -
RAINDANCE FD #29-4D
Elev. Ungraded Ground = 472'

660' FNL 660' FWL IT BEARS N88°44'42"E
829.78' FROM THE PROPOSED WELL HEAD.

1998, Alum. Cap,
PLS #22098
Lat: 40.457767*
Long: 104.926478

1. $N00^{\circ}10'57''W - 2597.88'$ (Mean)

1.0 BELOW GROUND,
L.S. #22098
Lat: 40.450547°
Long: 104.935517°

588°04'21"W - 2309.90' (meas.)

= 90° SYMBOL
 = PROPOSED WELL HEAD.

NAD 83 (SURFACE LOCATION)
 LATITUDE = 40°27'47.52" (40.463200)
 LONGITUDE = 104°55'37.44" (104.927067)

LATITUDE = 40°27'47.52" (40.463200)
LONGITUDE = 104°55'37.44" (104.927067)

NAD 27 (SURFACE LOCATION)
LATITUDE = 40°27'47.58" (40.463217)

LONGITUDE = 104°55'35.53" (104.926536)

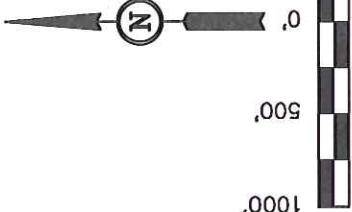
BASIS OF ELEVATION

USGS COOPERATIVE BASE NETWORK CONTROL STATION,
DESIGNATION 'VERMILYEA'. NGS DATA SHEET LISTS THE
NAVD 88 ELEVATION AS BEING 5026 FEET.

BASIS OF BEARINGS

BASIS OF BEARINGS IS A G.P.S. OBSERVATION.

LINE TABLE		
LINE	DIRECTION	LENGTH
L1	N88°44'42"E	829.78'



CERTIFICATE

THIS IS TO CERTIFY THAT THE ABOVE PLAT WAS PREPARED FROM FIELD NOTES OF ACTUAL SURVEYS MADE BY ME OR UNDER MY SUPERVISION AND THAT THE SAME ARE TRUE AND CORRECT TO THE BEST OF MY KNOWLEDGE AND BELIEF.

2001, Private Alum. Cap,
0.2' Below Ground,
Found in Monument Box
Lat: 40.450731°
/Long: 104.926503°

REVISÉ: 10-19-12

UNTAH ENGINEERING & LAND SURVEYING
85 SOUTH 200 EAST - VERNAL, UTAH 84078
(435) 789-1017

PDOP = 2.0

DATE SURVEYED:

DATE DRAWN:

PARTY

353

REFERENCES

WEATHER

--	--

FILE GREAT WESTERN OIL

WARM

9. CAC COMPANY

T6N, R67W, 6th P.M.

GREAT WESTERN OIL & GAS COMPANY

Well location, RAINANCE FD #29-4D (TARGET BOTTOM HOLE), located as shown in the NW 1/4 NW 1/4 of Section 29, T6N, R67W, 6th P.M., Weld County, Colorado.

BASIS OF ELEVATION

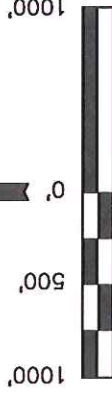
USGS COOPERATIVE BASE NETWORK CONTROL STATION, DESIGNATION 'VERMILYEA'. NGS DATA SHEET LISTS THE NAVD 88 ELEVATION AS BEING 5026 FEET

BASIS OF BEARINGS

BASIS OF BEARINGS IS A G.P.S. OBSERVATION.

LINE TABLE		
LINE	DIRECTION	LENGTH
L1	N88°44'42"E	829.78'

Section Corner
Re-Established
Using Previously
Recorded Survey
Plots (Not Set
on Ground)



SCALE

CERTIFICATE

THIS IS TO CERTIFY THAT THE ABOVE PLAT WAS PREPARED FROM FIELD NOTES OF ACTUAL SURVEYS MADE BY ME OR UNDER MY SUPERVISION AND THAT THE SAME ARE TRUE AND CORRECT TO THE BEST OF MY KNOWLEDGE AND BELIEF.

REGISTERED LAND SURVEYOR
REGISTRATION NO. 172492
STATE OF COLORADO
98-19-12

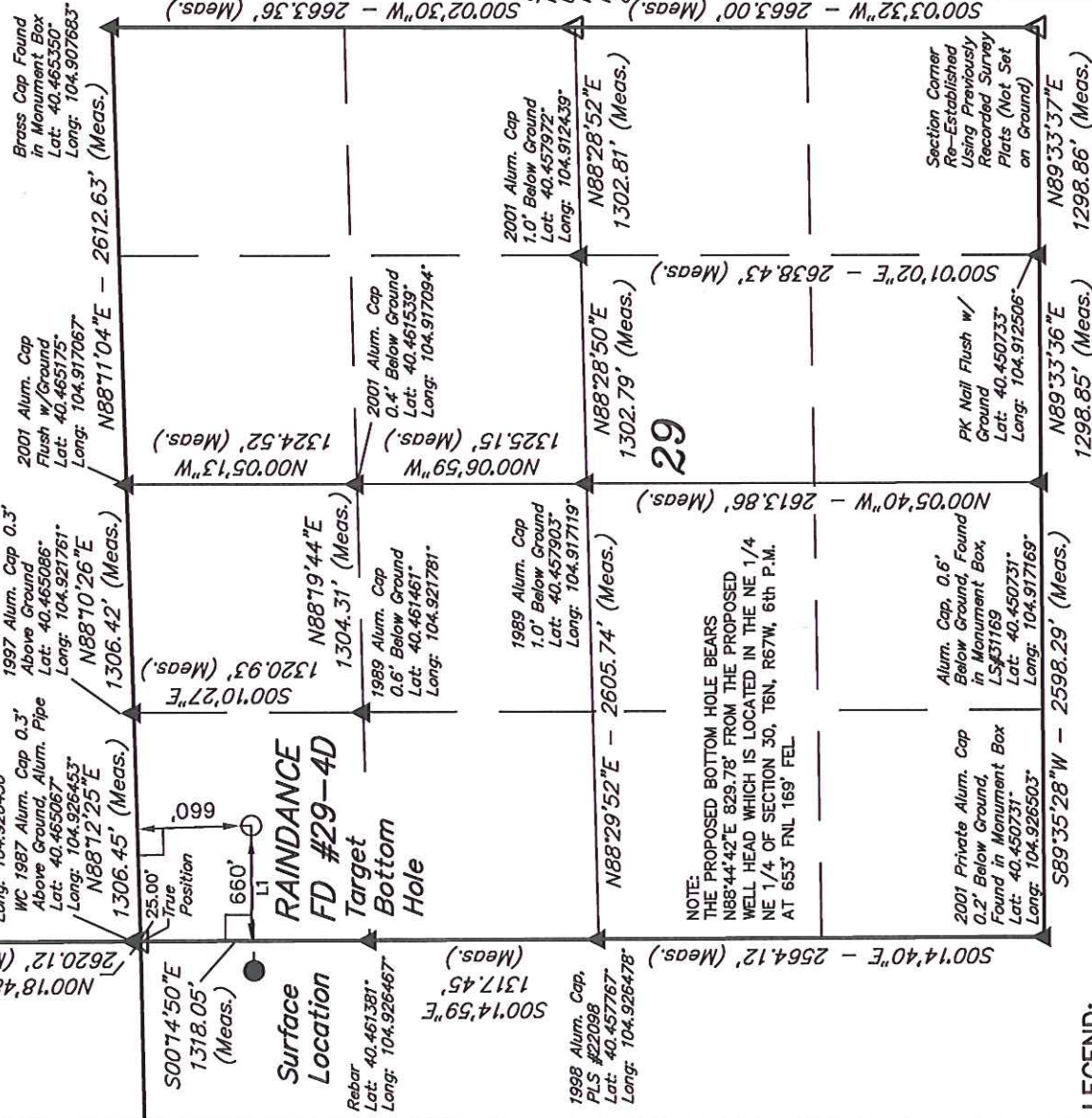
REVISED: 10-19-12

UINTAH ENGINEERING & LAND SURVEYING

85 SOUTH 200 EAST - VERNAL, UTAH 84078

(435) 789-1017

SCALE 1" = 1000'	DATE SURVEYED: 09-28-12	DATE DRAWN: 10-02-12
PARTY L.S. G.W. J.W.	REFERENCES G.L.O. PLAT	
WEATHER WARM	FILE GREAT WESTERN OIL & GAS COMPANY	



NOTE:
THE PROPOSED BOTTOM HOLE BEARS
N88°44'42"E 829.78' FROM THE PROPOSED
WELL HEAD WHICH IS LOCATED IN THE NE 1/4
NE 1/4 OF SECTION 30, T6N, R67W, 6th P.M.
AT 653' FNL 169' FEL

LEGEND:

- 90° SYMBOL = PROPOSED WELL HEAD.
- = SECTION CORNERS LOCATED.
- ▲ = SECTION CORNERS RE-ESTABLISHED (Not Set on Ground.)

NAD 83 (TARGET BOTTOM HOLE)
LATITUDE = 40°27'47.63" (40.463231)
LONGITUDE = 104°55'26.72" (104.924089)
NAD 27 (TARGET BOTTOM HOLE)
LATITUDE = 40°27'44.69" (40.462414)
LONGITUDE = 104°55'24.81" (104.923558)