

R R T10N, R57W, 6th P.M.  
58 57

2011 2 1/2" UELS Alum. Cap. RLS #17492  
Lat: 40.831603°  
Long: 103.803653°  
N89°56'55"E  
2539.76' (Meas.)  
2011 2 1/2" UELS Alum. Cap. Flush W/ Ground, RLS #17492  
Lat: 40.831606°  
Long: 103.794278°  
N89°55'14"E - 2657.22' (Meas.)  
1917 BLM Brass Cap, 0.5' High  
Lat: 40.831611°  
Long: 103.784878°

HORSETAIL #19-3012H  
Elev. Ungraded Ground = 4832'

NOTE:  
SEE ADDENDUM TO LEGAL PLAT FOR  
EXISTING IMPROVEMENTS WITHIN 400'  
OF THE PROPOSED DISTURBANCE.

NOTE:  
THE PROPOSED BOTTOM HOLE FOR THIS  
WELL IS LOCATED IN LOT 2 OF SECTION 30,  
T10N, R57W, 6th P.M. AT 1980' FNL 660'  
FWL. IT BEARS S00°33'03"E 6944.53' FROM  
THE PROPOSED WELL HEAD.

N00°31'12"W - 2648.35' (Meas.)  
N00°28'24"W - 2642.62' (Meas.)

S00°48'23"E - 2667.07' (Meas.)  
S00°47'38"E - 2648.85' (Meas.)

1917 BLM Brass Cap, 1.0' High  
Lat: 40.817086°  
Long: 103.803497°  
N89°44'58"W - 2560.47' (Meas.)  
N89°50'21"W - 2664.91' (Meas.)  
2011 Priv. Alum. Cap, 0.2' High, PLS #28285  
Lat: 40.817050°  
Long: 103.794247°  
1917 BLM Brass Cap, Flush W/ Ground  
Lat: 40.817025°  
Long: 103.784622°

Target Bottom Hole

- LEGEND:
- = 90° SYMBOL
  - = PROPOSED WELL HEAD.
  - = SECTION CORNERS LOCATED.

WHITTING OIL & GAS CORP.

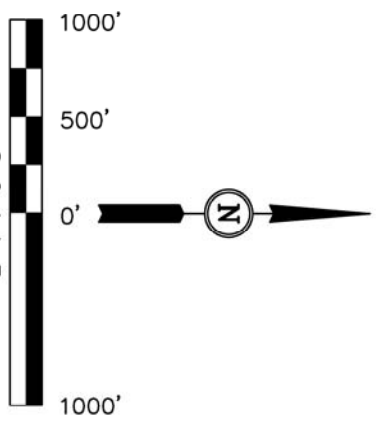
Well location, HORSETAIL #19-3012H (SURFACE LOCATION), located as shown in LOT 1 of Section 19, T10N, R57W, 6th P.M., Weld County, Colorado.

BASIS OF ELEVATION

SPOT ELEVATION LOCATED AT THE NORTHEAST CORNER OF SECTION 15, T9N, R58W, 6th P.M. TAKEN FROM THE GATEHOOK SPRING, QUADRANGLE, COLORADO, WELD COUNTY, 7.5 MINUTE QUAD (TOPOGRAPHIC MAP) PUBLISHED BY THE UNITED STATES DEPARTMENT OF THE INTERIOR, GEOLOGICAL SURVEY. SAID ELEVATION IS MARKED AS BEING 4679 FEET.

BASIS OF BEARINGS

BASIS OF BEARINGS IS A G.P.S. OBSERVATION.



CERTIFICATE

THIS IS TO CERTIFY THAT THE ABOVE PLAT WAS PREPARED FROM FIELD NOTES OF ACTUAL SURVEYS MADE BY ME OR UNDER MY SUPERVISION AND THAT THE SAME ARE TRUE AND CORRECT TO THE BEST OF MY KNOWLEDGE AND BELIEF.

REGISTERED LAND SURVEYOR  
REGISTRATION NO. 17492  
STATE OF COLORADO  
09-12-12

UINTAH ENGINEERING & LAND SURVEYING  
86 SOUTH 200 EAST - VERNAL, UTAH 84078  
(435) 789-1017

SCALE 1" = 1000'	DATE SURVEYED: 06-25-12	DATE DRAWN: 06-29-12
PARTY D.L.S. C.M. J.M.H.	REFERENCES G.L.O. PLAT	FILE WHITTING OIL & GAS CORP.
WEATHER HOT		

T10N, R57W, 6th P.M.

WHITTING OIL & GAS CORP.

R  
58  
57  
W

Surface Location

1917 BLM Brass  
Cap, 1.0' High  
Lat: 40.817086°  
Long: 103.803497°

1917 BLM Brass Cap,  
Flush W/ Ground  
Lat: 40.817025°  
Long: 103.784622°

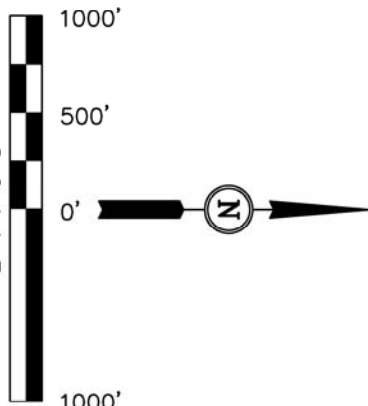
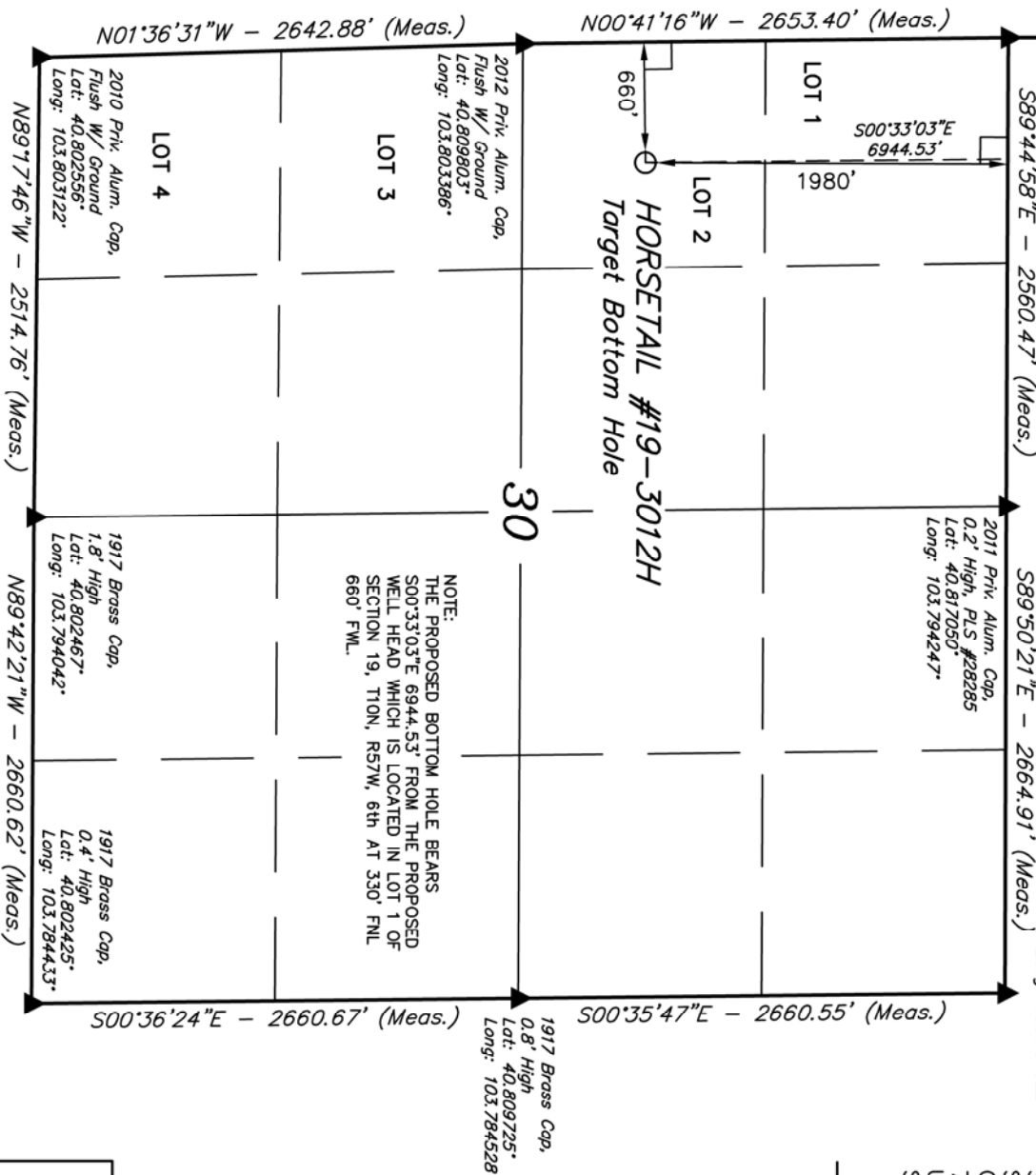
Well location, HORSETAIL #19-3012H (TARGET BOTTOM HOLE), located as shown in LOT 2 of Section 30, T10N, R57W, 6th P.M., Weld County, Colorado.

BASIS OF ELEVATION

SPOT ELEVATION LOCATED AT THE NORTHEAST CORNER OF SECTION 15, T9N, R58W, 6th P.M. TAKEN FROM THE GATEHOOK SPRING, QUADRANGLE, COLORADO, WELD COUNTY, 7.5 MINUTE QUAD (TOPOGRAPHIC MAP) PUBLISHED BY THE UNITED STATES DEPARTMENT OF THE INTERIOR, GEOLOGICAL SURVEY. SAID ELEVATION IS MARKED AS BEING 4679 FEET.

BASIS OF BEARINGS

BASIS OF BEARINGS IS A G.P.S. OBSERVATION.



THIS IS TO CERTIFY THAT THE ABOVE PLAT WAS PREPARED FROM FIELD NOTES OF ACTUAL SURVEYS MADE BY ME OR UNDER MY SUPERVISION AND THAT THE SAME ARE TRUE AND CORRECT TO THE BEST OF MY KNOWLEDGE AND BELIEF.

CERTIFICATE

REGISTERED LAND SURVEYOR  
REGISTRATION No. 17492  
STATE OF COLORADO  
09-12-12

UINTAH ENGINEERING & LAND SURVEYING  
86 SOUTH 200 EAST - VERNAL, UTAH 84078  
(435) 789-1017

SCALE 1" = 1000'  
DATE SURVEYED: 06-25-12  
DATE DRAWN: 06-29-12

PARTY D.L.S. C.M. J.M.H.  
REFERENCES G.L.O. PLAT  
WEATHER HOT  
FILE WHITTING OIL & GAS CORP.

LEGEND:

- 90° SYMBOL
- PROPOSED WELL HEAD.
- SECTION CORNERS LOCATED.

NAD 83 (TARGET BOTTOM HOLE)	
LATITUDE = 40°48'41.92" (40.811644)	
LONGITUDE = 103°48'03.71" (103.801031)	
NAD 27 (TARGET BOTTOM HOLE)	
LATITUDE = 40°48'41.97" (40.811658)	
LONGITUDE = 103°48'01.90" (103.800528)	