

WELL LOCATION CERTIFICATE

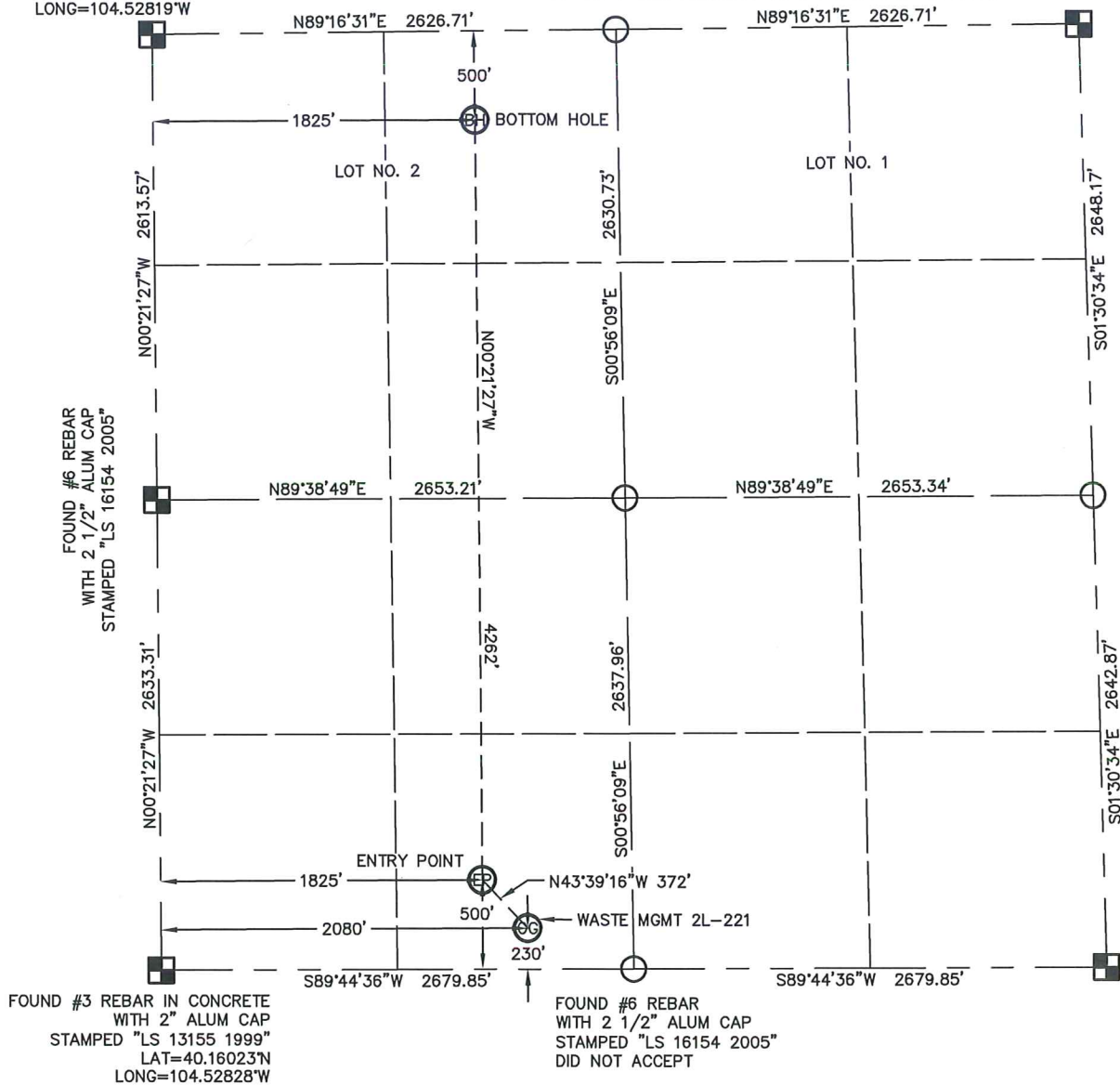
WASTE MGMT 2L-221

THIS MAP DOES NOT REPRESENT A BOUNDARY SURVEY

SECTION: 2
TOWNSHIP: 2N
RANGE: 64W

FOUND #6 REBAR
WITH 3 1/4" ALUM CAP
STAMPED "LS 16154"
LAT=40.17463°N
LONG=104.52819°W

FOUND 2 3/8" PIPE
WITH 3 1/4" ALUM CAP
STAMPED "LS 2279 1980"
LAT=40.17465°N
LONG=104.50940°W



In accordance with a request from MAC NEUMANN with PDC ENERGY, INC.

King Surveyors Inc. has determined the surface location of the WASTE MGMT 2L-221 to be 230' from the SOUTH line and 2080' from the WEST line, the entry point to be 500' from the SOUTH line and 1825' from the WEST line and the bottom hole to be 500' from the NORTH line and 1825' from the WEST line, as measured at right angles, from the section lines of Section 2, Township 2 North, Range 64 West of the Sixth Principal Meridian, County of Weld, State of Colorado.

I hereby state that this Well Location Certificate was prepared by me, or under my direct supervision, that the fieldwork was completed on 12-7-2012, for and on behalf of PDC ENERGY, INC., that this is not a Land Survey Plat or an Improvement Survey Plat, and that it is not to be relied upon for establishment of fence, building, or other future improvement lines.

SURFACE LOCATION
LATITUDE: 40.16082°N
LONGITUDE: 104.52084°W
PDOP: 1.3
ELEV: 4934'
1/4, 1/4: SE 1/4 SW 1/4
NEAREST PROPERTY LINE: ±2900' SOUTH

ENTRY POINT
LATITUDE: 40.16157°N
LONGITUDE: 104.52175°W
BOTTOM HOLE
LATITUDE: 40.17326°N
LONGITUDE: 104.52167°W

NOTES:

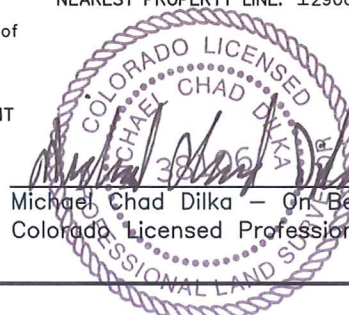
- 1) Bearings shown are Grid Bearings of the Colorado State Plane Coordinate System, North Zone, North American Datum 1983/2007. The lineal dimensions as contained herein are based upon the "U.S. Survey Foot."
- 2) Ground elevations are based on an observed GPS elevation (NAVD 1988 DATUM).
- 3) NEAREST EXISTING WELL: NO EXISTING WELLS IN THIS SECTION
- 4) IMPROVEMENTS: See LOCATION DRAWING for all visible improvements within 400' of the disturbed area.
- 5) SURFACE USE: PASTURE/PRAIRIE
- 6) FIELD OPERATOR: RON EDWARDS

NOTE

According to Colorado law, you must commence any legal action based upon any defect in this W.L.C. within three years after you discover such defect. In no event, may any action based upon any defect in this survey be commenced more than ten years after the date of the certificate shown hereon. (13-80-105 C.R.S.)

LEGEND

- FOUND ALIQUOT MONUMENT AS DESCRIBED
- CALCULATED POSITION
- SET ALIQUOT MONUMENT AS DESCRIBED



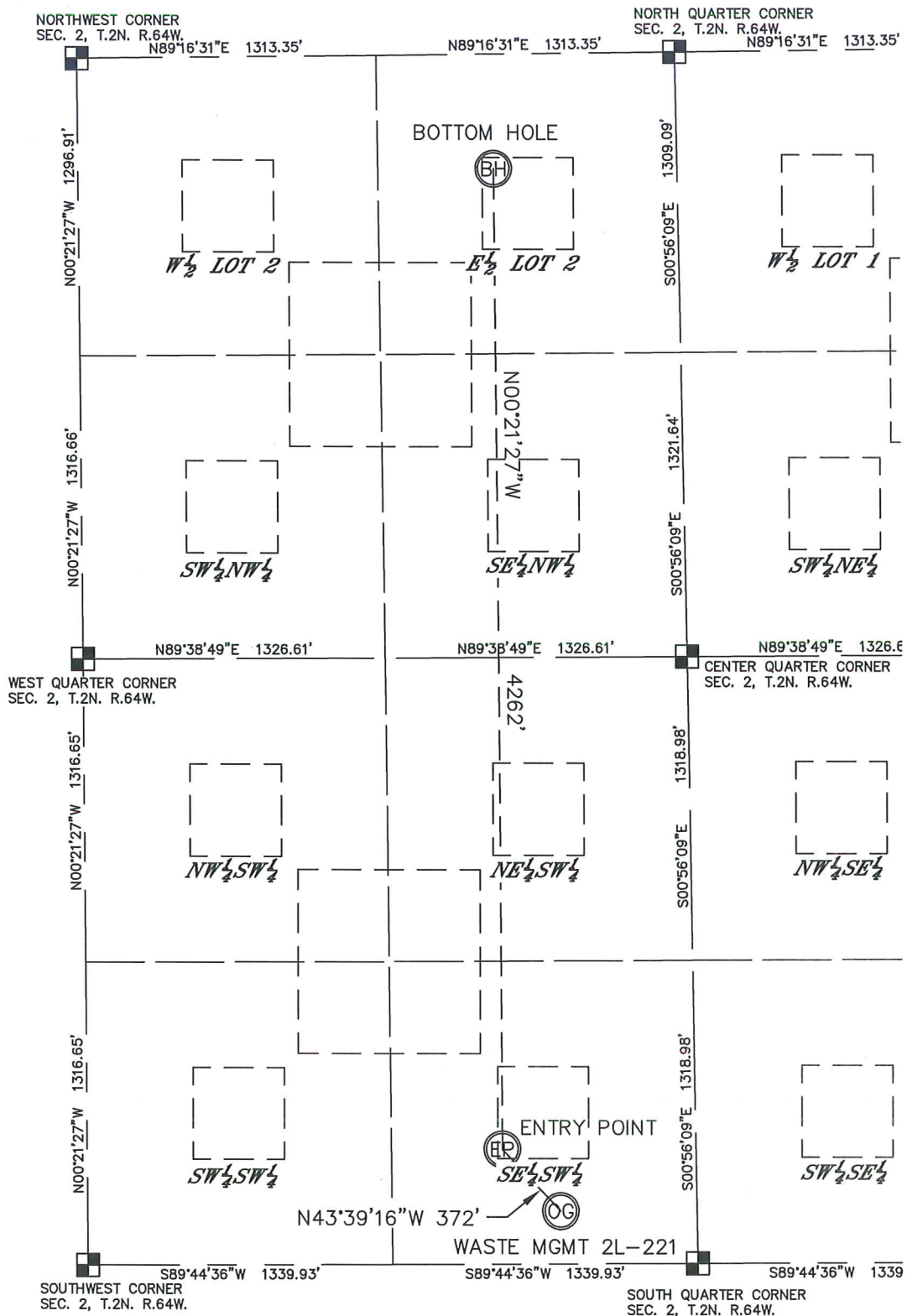
Michael Chad Dilka - On Behalf Of King Surveyors, Inc.
Colorado Licensed Professional Land Surveyor #38106

PROJECT#: 2012372

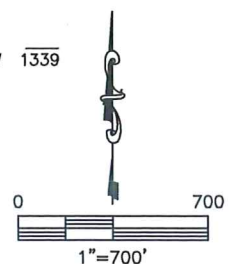
SITE SKETCH

WASTE MGMT 2L-221

SECTION: 2
TOWNSHIP: 2N
RANGE: 64W



NOTE
THERE ARE NO EXISTING WELLS IN THIS SECTION.



PROJECT#: 2012372