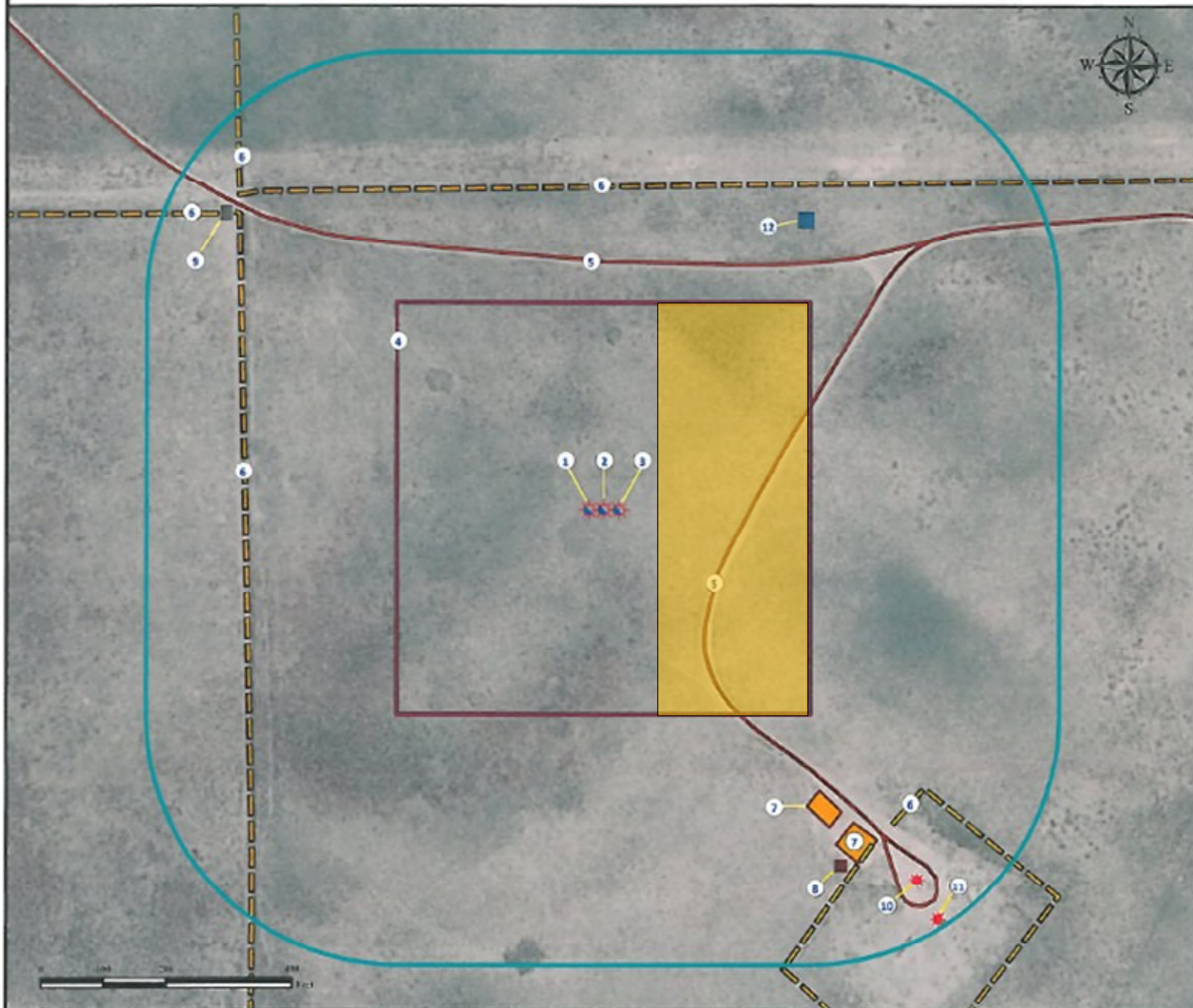


# Location Drawing

## COLFER 13C-34HZ

### Horizontal Multi Well Pad

NW¼ NW¼ SECTION 34, TOWNSHIP 2 NORTH, RANGE 65 WEST OF THE 6TH PRINCIPAL MERIDIAN



1. Proposed well COLFER 13N-34HZ.
2. Proposed well COLFER 13C-34HZ.
3. Proposed well COLFER 35N-34HZ.
4. Operational Disturbance Area.

5. Private roads are  $\pm 207'$  SE and  $\pm 395'$  N.
6. Fences are  $\pm 573'$  W,  $\pm 520'$  N,  $\pm 750'$  NW,  $\pm 769'$  NW and  $\pm 684'$  SE.
7. Facilities are  $\pm 576'$  SE and  $\pm 641'$  SE.

8. Emissions control device is  $\pm 684'$  SE.
9. Gate is  $\pm 768'$  NW.
10. Existing well EICHHALER #2 is  $\pm 776'$  SE.
11. Existing well ALLEN 3-34A (DIR) is  $\pm 846'$  SE.
12. Pig Launcher is  $\pm 563'$  NE

Approximately 480' FNL, 580' FWL

#### Legend

Proposed Facility	Existing Well	Oil & Gas Equipment	Facilities Enclosure
Proposed Well	Gate	Disturbance Area	Private Road
ECD	400' Radius	Fence	

#### Reference Location

\*\* All Measurements are Made from Reference Well COLFER 13C-34HZ\*\*  
 Lat: 40.100997° Long: -104.657180° (NAD83)  
 Elevation: 4943 Feet

Surface Use: Rangeland



Use our resources to find yours!  
[www.petro-fs.com](http://www.petro-fs.com)  
 (303) 928-7128

Field Date: 03/23/2011  
 Drafting Date: 04/07/2011  
 Drafter: DMM  
 Checked By: BHF

Data Sources:  
 - Aerial courtesy of NAIP (2009)

Prepared for: **Anadarko**  
 Petroleum Corporation  
**KERR-MCGEE OIL & GAS ONSHORE LP**