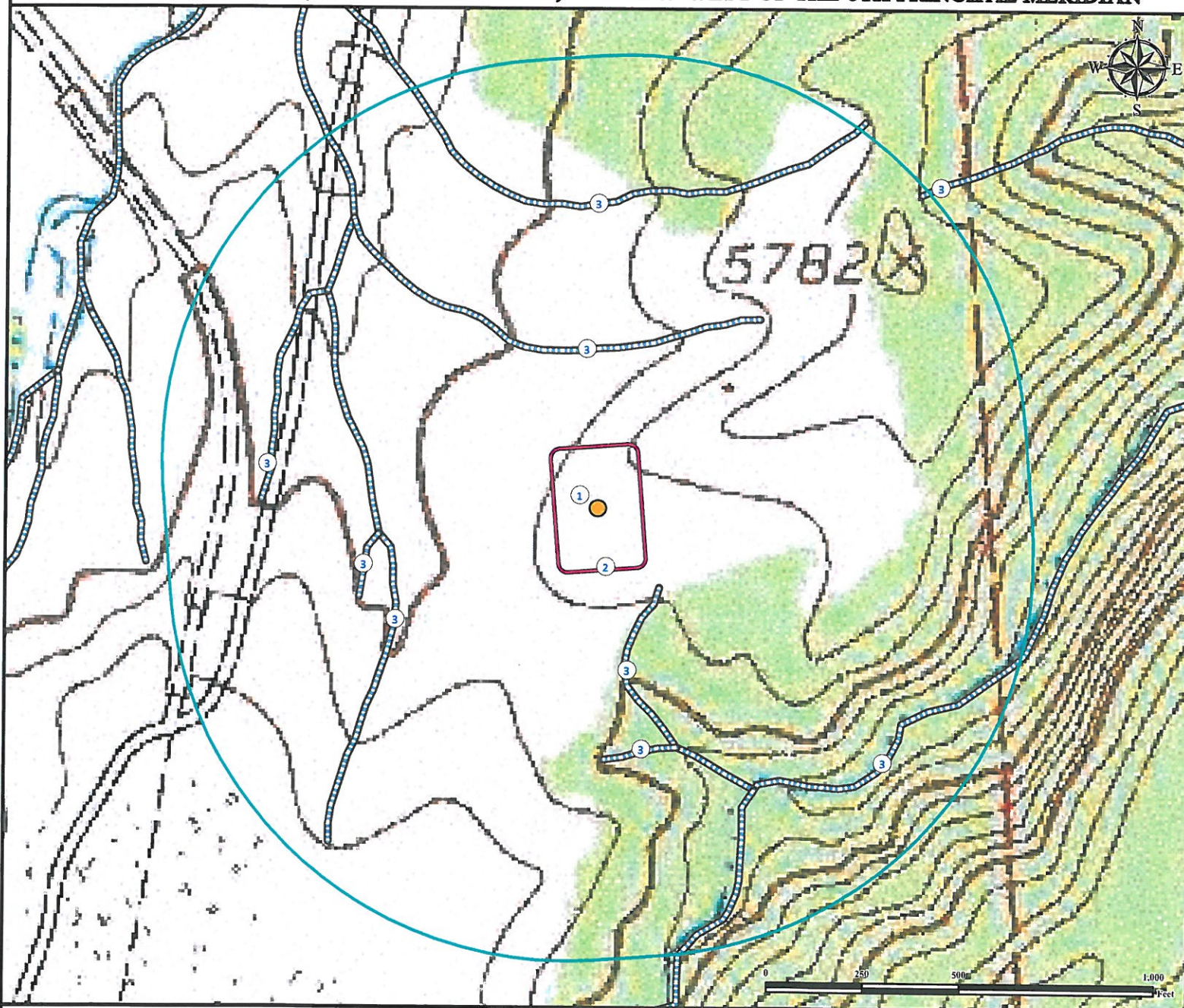


Hydrology Map

BASS 08-07

SE¼ NE¼ SECTION 7, TOWNSHIP 20 SOUTH, RANGE 69 WEST OF THE 6TH PRINCIPAL MERIDIAN



1. Proposed Well BASS 08-07.

2. Operational Disturbance Area.

3. Intermittent Streams are $\pm 257'$ SE, $\pm 408'$ N, $\pm 542'$ SW, $\pm 567'$ SW, $\pm 636'$ S, $\pm 776'$ N, $\pm 846'$ NW, $\pm 819'$ SE, and $\pm 1158'$ NE.

Legend

- | | |
|---------------------|------------------|
| Proposed Well | Disturbance Area |
| Intermittent Stream | 1000' Radius |

Reference Location

** All Measurements are Made from Reference Well BASS 08-07 **

Lat: 38.323888° Long: -105.147001° (NAD83)
Elevation: 5733 Feet



Use our resources to find yours!
www.petro-fs.com
(303) 928-7128

Field Date: 12/12/2012
Drafting Date: 01/15/2012
Drafter: GWB
Revision:

Data Sources:
- TOPO courtesy of USGS
- Intermittent Stream data courtesy of NHD

Prepared for:

incremental
OIL AND GAS
LTD