



CEMENT BOND
LOG

Mesa Wireline

Company	ENCANA OIL & GAS (USA) INC		
Well	ARISTOCRAT ANGUS 6-4-4		
Field	WATTENBERG		
County	WELD		
State	COLORADO		
Company ENCANA OIL & GAS (USA) INC		Well ARISTOCRAT ANGUS 6-4-4	
Field WATTENBERG		County WELD State COLORADO	
Location:	API #: 05-123-34136-0000		Other Services
SHL: 1975' FSL & 656' FEL NESE		NONE	
BHL: 2590' FNL & 1300' FEL SENE			
SEC: 4 TWP: 3N RGE: 6SW			
Permanent Datum	GROUND LEVEL	Elevation	4805'
Log Measured From	KELLY BUSHING = 13'	K.B. 4818'	
Drilling Measured From	KELLY BUSHING	D.F. 4817'	
		G.L. 4805'	

Date	30 NOVEMBER 2012			
Run Number	ONE			
Depth Driller	7488'			
Depth Logger	7480'			
Bottom Logged Interval	7480'			
Top Log Interval	3000'			
Open Hole Size	7.875"			
Type Fluid	WATER			
Density / Viscosity	~8.3#			
Max. Recorded Temp.	285 DEG F			
Estimated Cement Top	3330'			
Time Well Ready	N/A			
Time Logger on Bottom	N/A			
Equipment Number	10501 PRD01			
Location	AULT. CO			
Recorded By	Z. EMWICK			
Witnessed By	K. REDD			
Borehole Record				
Run Number	Bit	From	To	Size
ONE	12.25"	0'	640'	
TWO	7.875"	640'	7510'	
Tubing Record				
Casing Record	Size	Wgt/Ft	Top	Bottom
Surface String	8.625"	24#	0'	632'
Prot. String				
Production String	4.5"	11.6#	0'	7492'
Liner				

<<< Fold Here >>>

All interpretations are opinions based on inferences from electrical or other measurements and we cannot and do not guarantee the accuracy or correctness of any interpretation, and we shall not, except in the case of gross or willful negligence on our part, be liable or responsible for any loss, costs, damages, or expenses incurred or sustained by anyone resulting from any interpretation made by any of our officers, agents or employees. These interpretations are also subject to our general terms and conditions set out in our current Price Schedule.

Comments

LOG CORRELATED TO PSI HIGH RESOLUTION INDUCTION LOG DATED 19 NOVEMBER 2012

SHORT JOINT: 6870' - 6891'

WE APPRECIATE YOUR BUSINESS, MESA WIRELINE LLC, AULT CO. (970) 834-2495



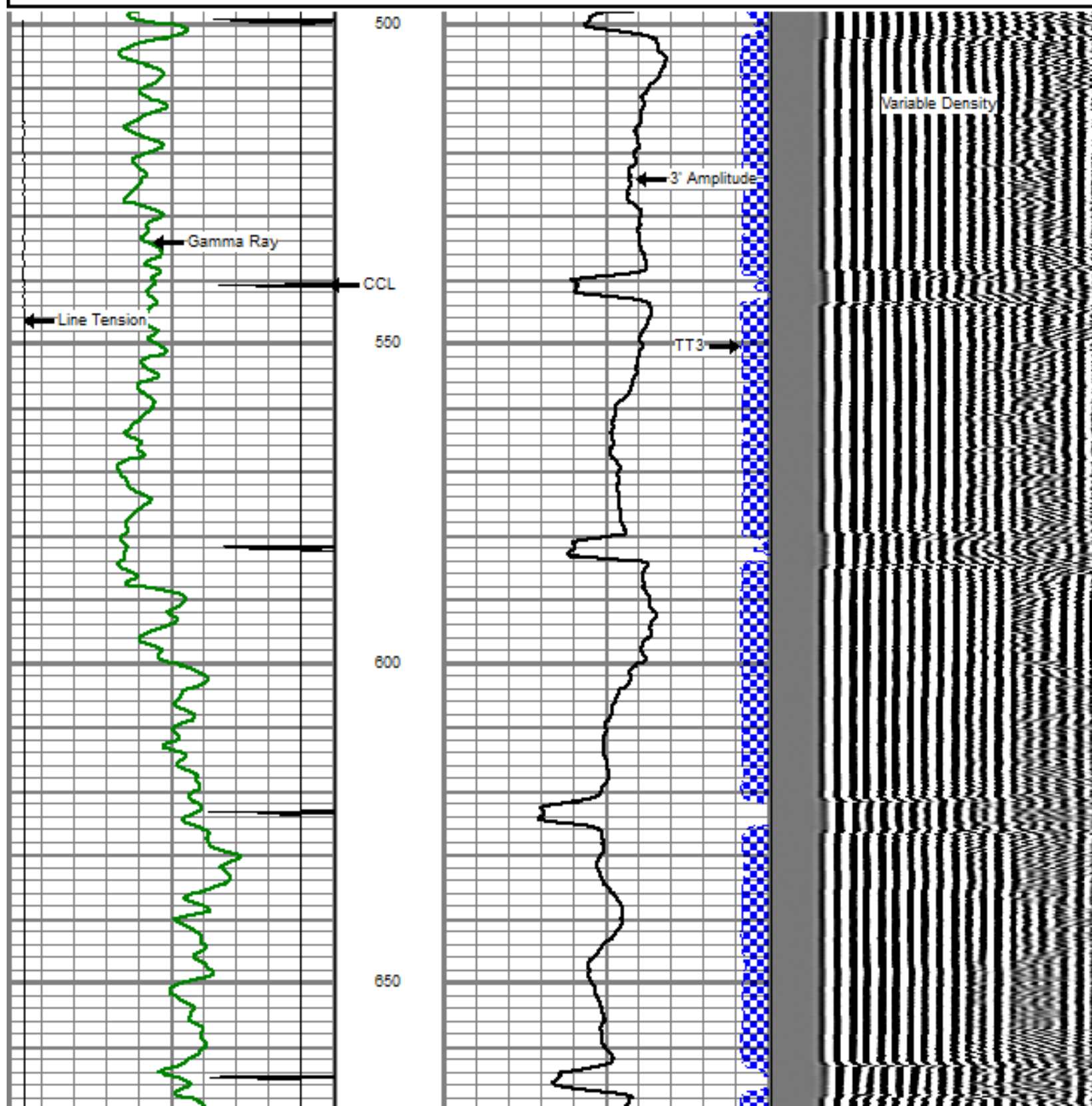
TOP PASS

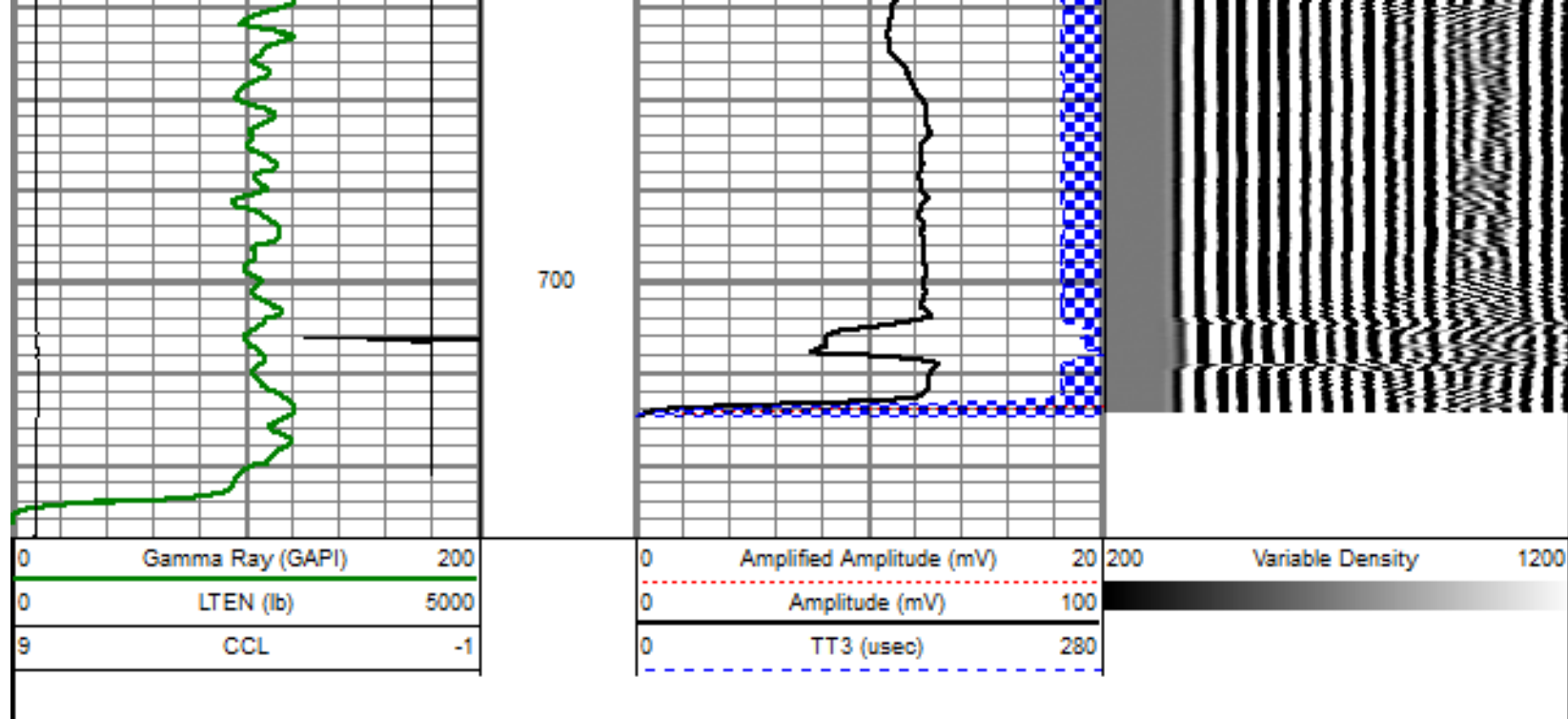
Database File: aristocrat angus 6-4-4.db
Dataset Pathname: pass7
Presentation Format: dobl_prb
Dataset Creation: Fri Nov 30 13:12:35 2012 by Log SCH 110930
Charted by: Depth in Feet scaled 1:240

0	Gamma Ray (GAPI)	200
0	LTEN (lb)	5000
9	CCL	-1

0	Amplified Amplitude (mV)	20
0	Amplitude (mV)	100
0	TT3 (usec)	280

200 Variable Density 1200

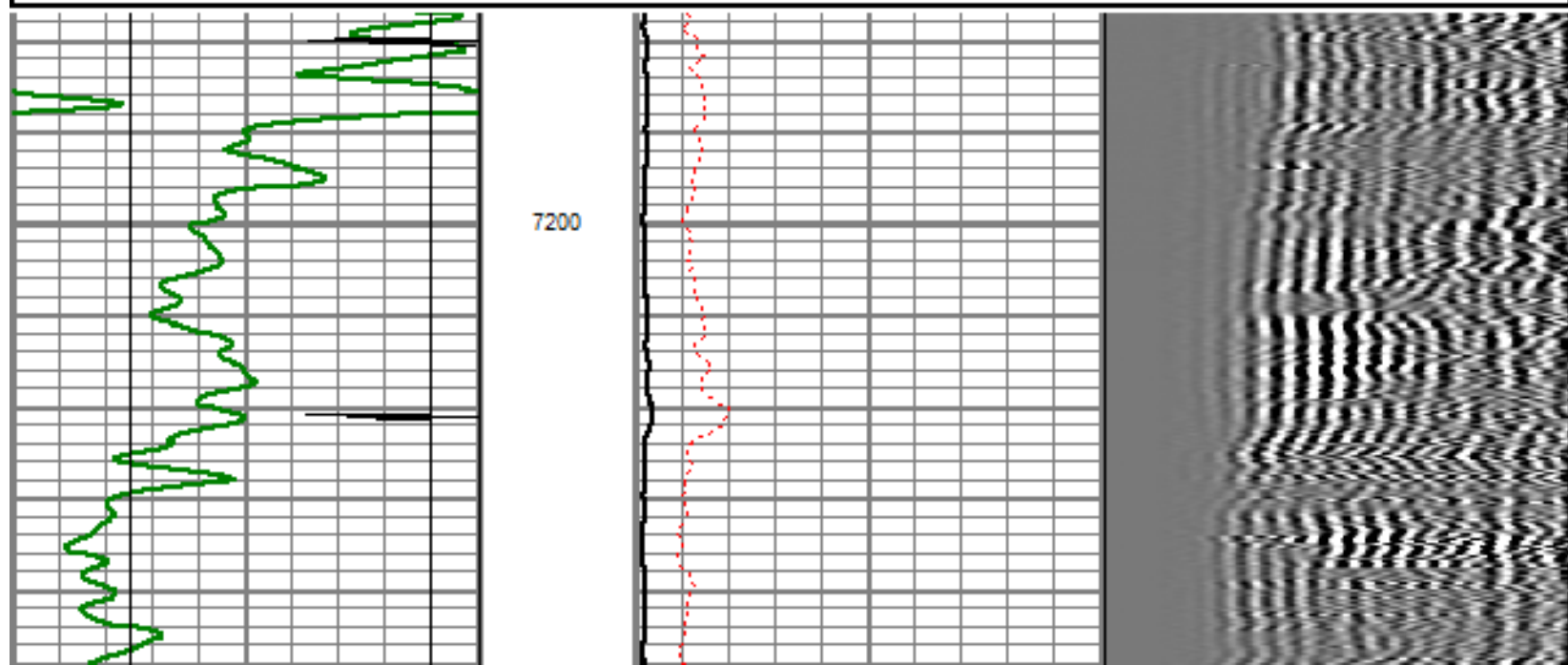
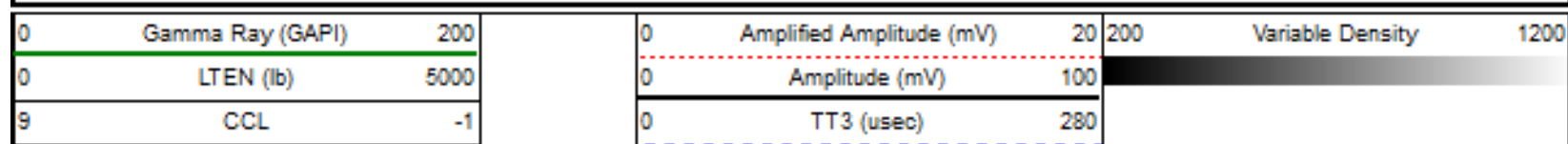


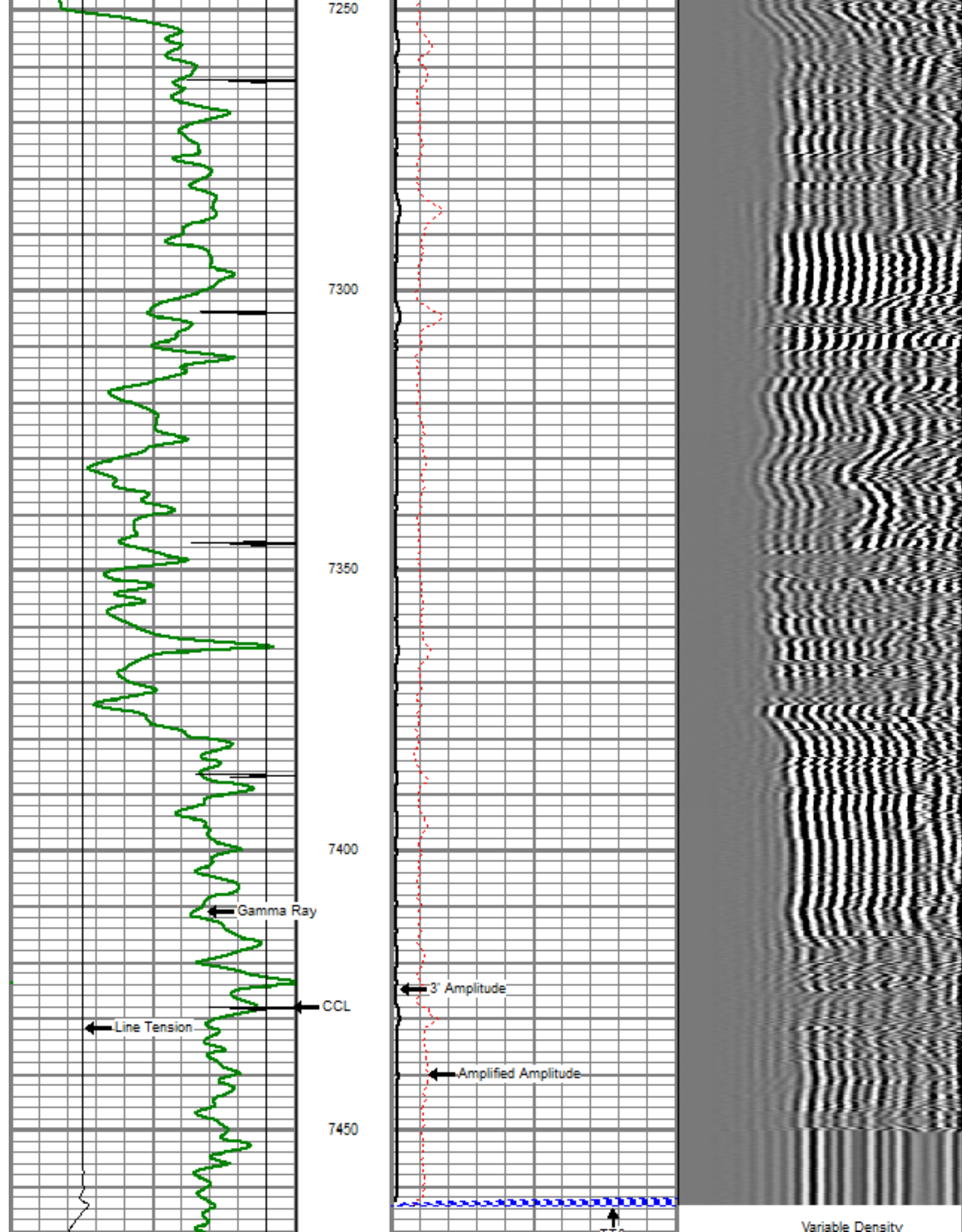


REPEAT PASS

5" = 100'

Database File: aristocrat angus 6-4-4.db
 Dataset Pathname: pass5
 Presentation Format: dobl_prb
 Dataset Creation: Fri Nov 30 11:47:40 2012 by Log SCH 110930
 Charted by: Depth in Feet scaled 1:240





0	Gamma Ray (GAPI)	200
0	LTEN (lb)	5000
9	CCL	-1

0	Amplified Amplitude (mV)	20
0	Amplitude (mV)	100
0	TT3 (usec)	280

200	Variable Density	1200
-----	------------------	------



MAIN PASS

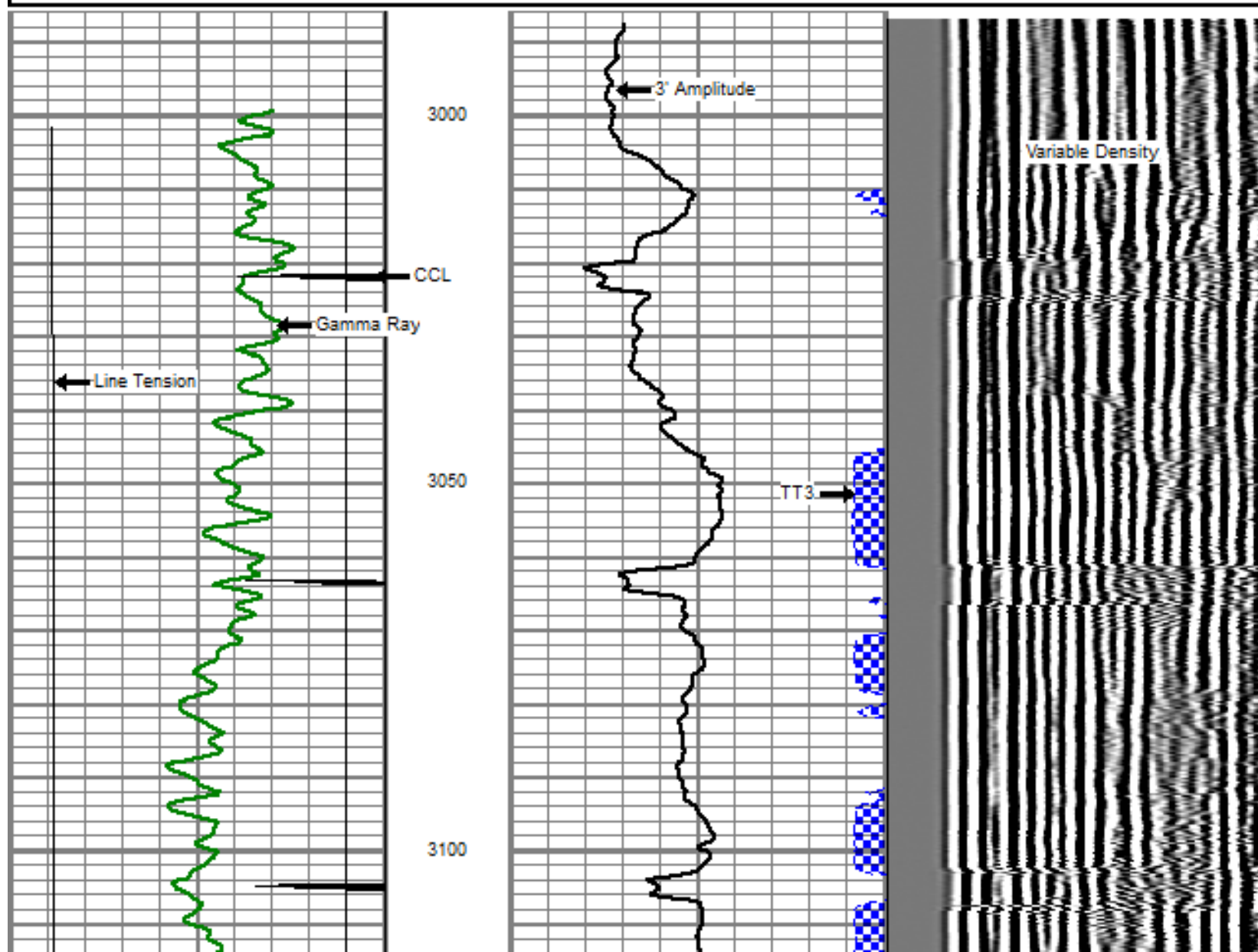
5" = 100'

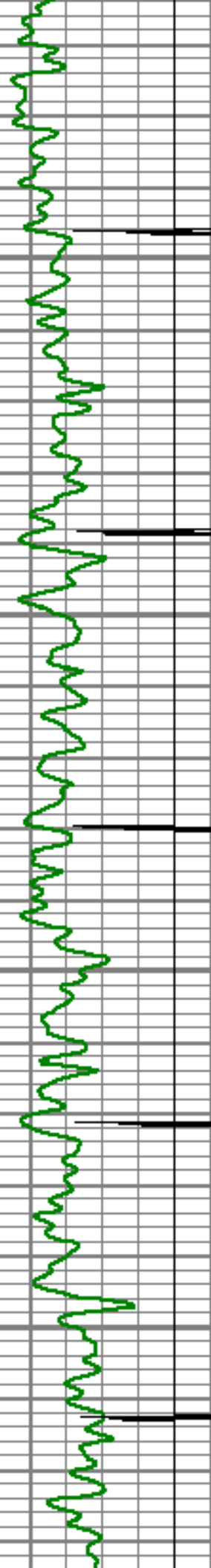
Database File: aristocrat angus 6-4-4.db
 Dataset Pathname: pass6.20H
 Presentation Format: dobl_prb
 Dataset Creation: Fri Nov 30 13:02:40 2012
 Charted by: Depth in Feet scaled 1:240

0	Gamma Ray (GAPI)	200
0	LTEN (lb)	5000
9	CCL	-1

0	Amplified Amplitude (mV)	20
0	Amplitude (mV)	100
0	TT3 (usec)	280

200	Variable Density	1200
-----	------------------	------





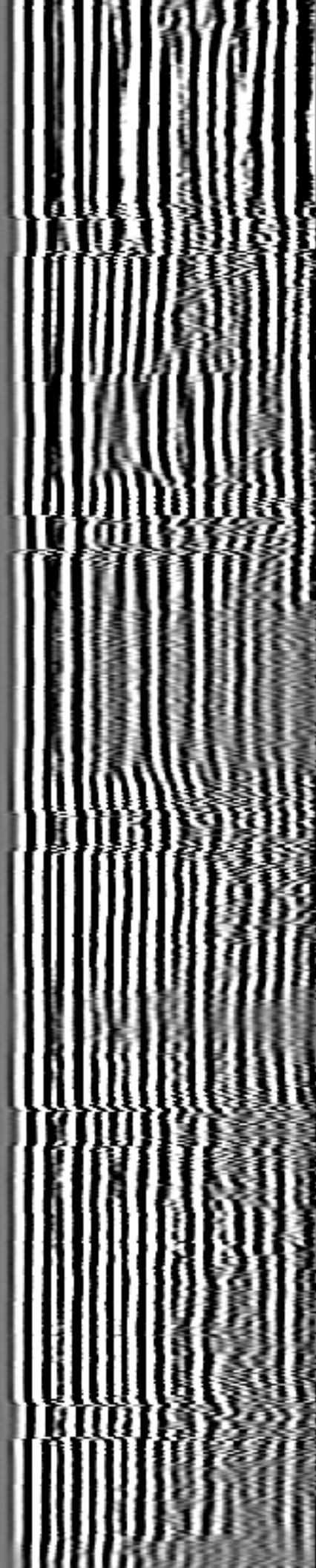
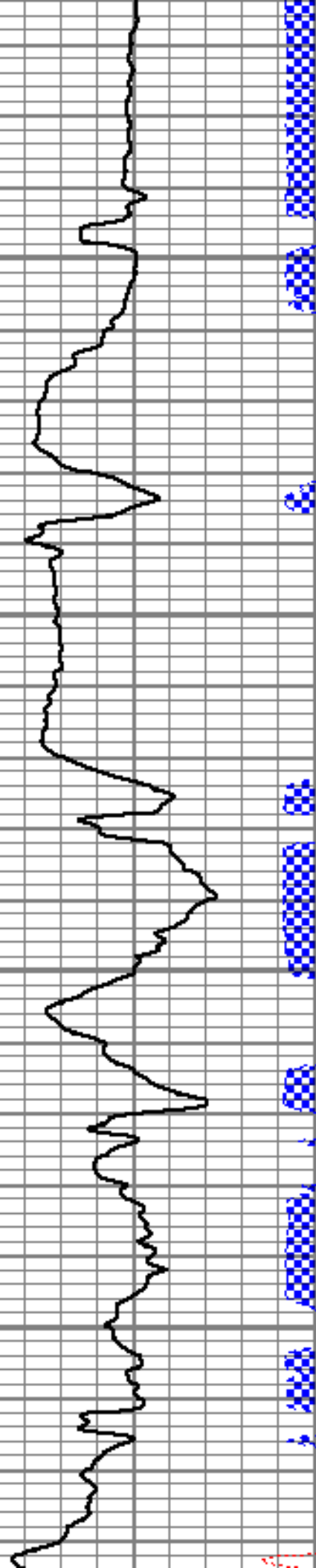
3150

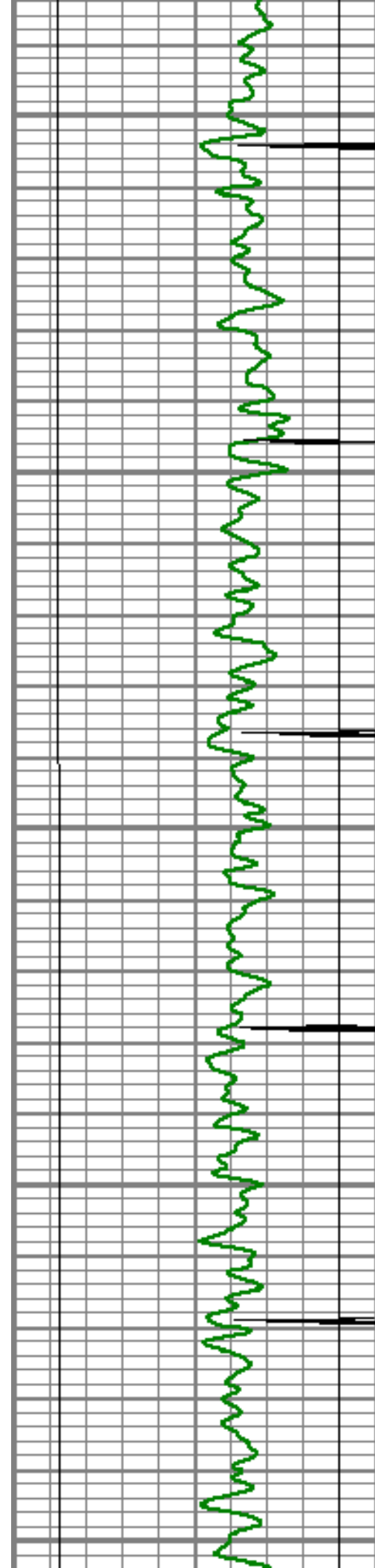
3200

3250

3300

Top of Cement





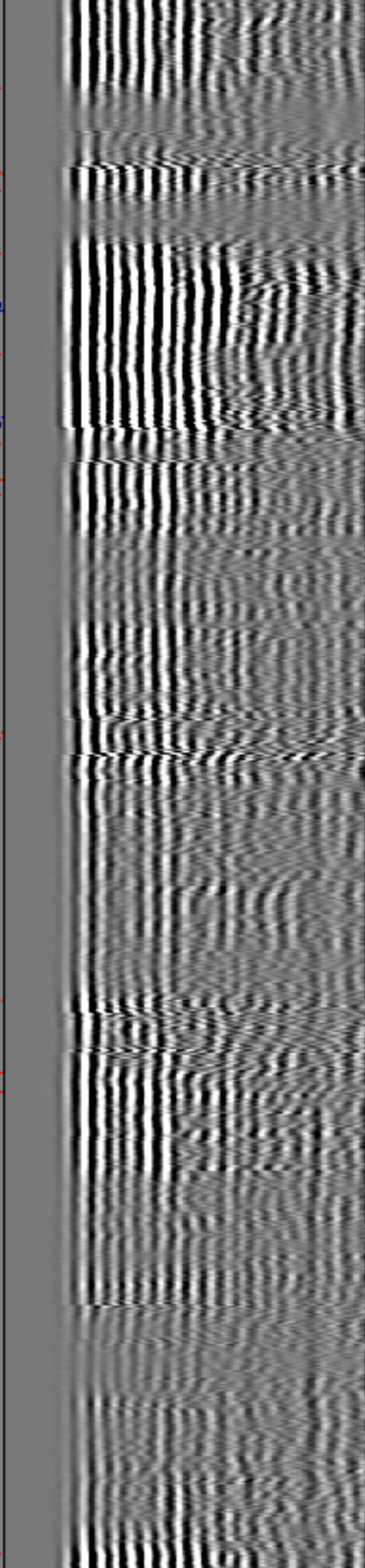
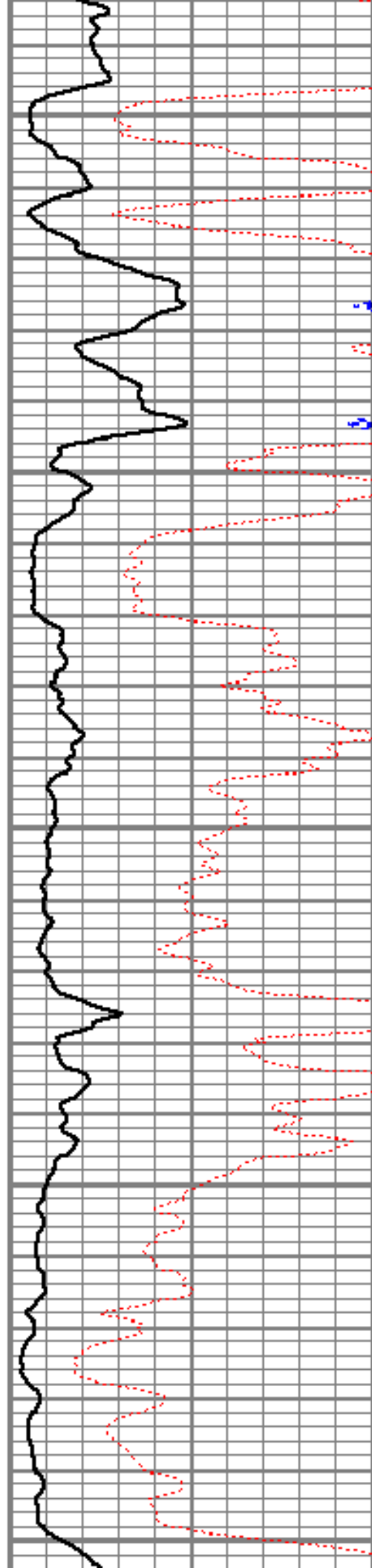
3350

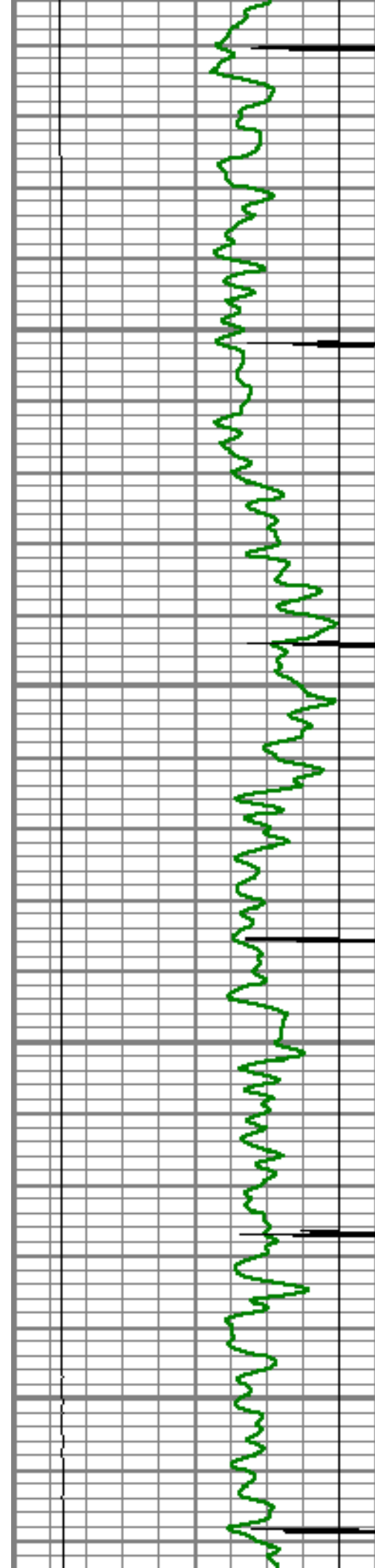
3400

3450

3500

3550



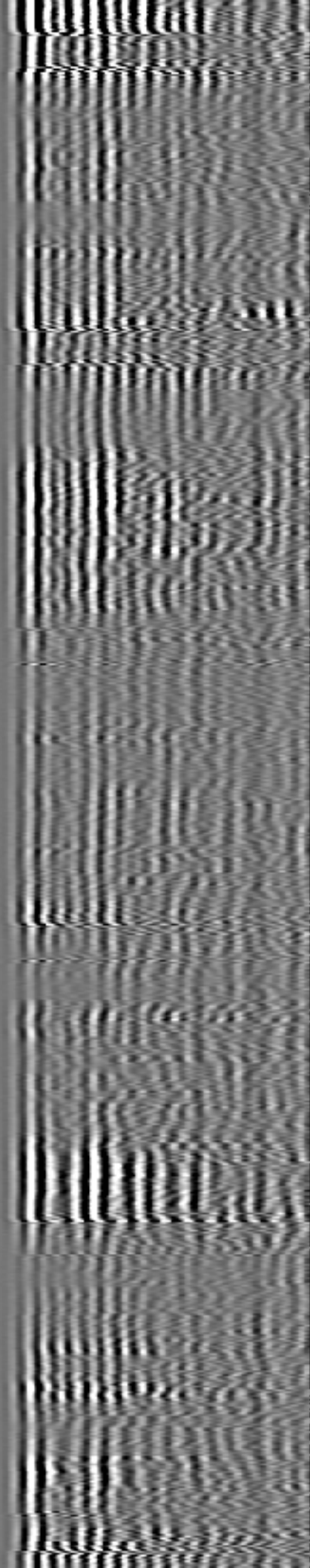
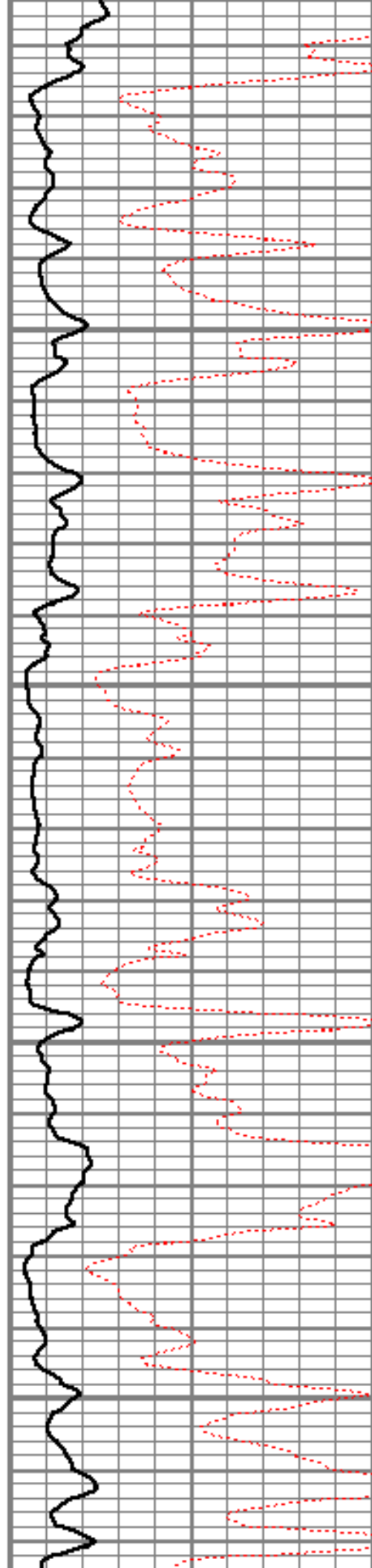


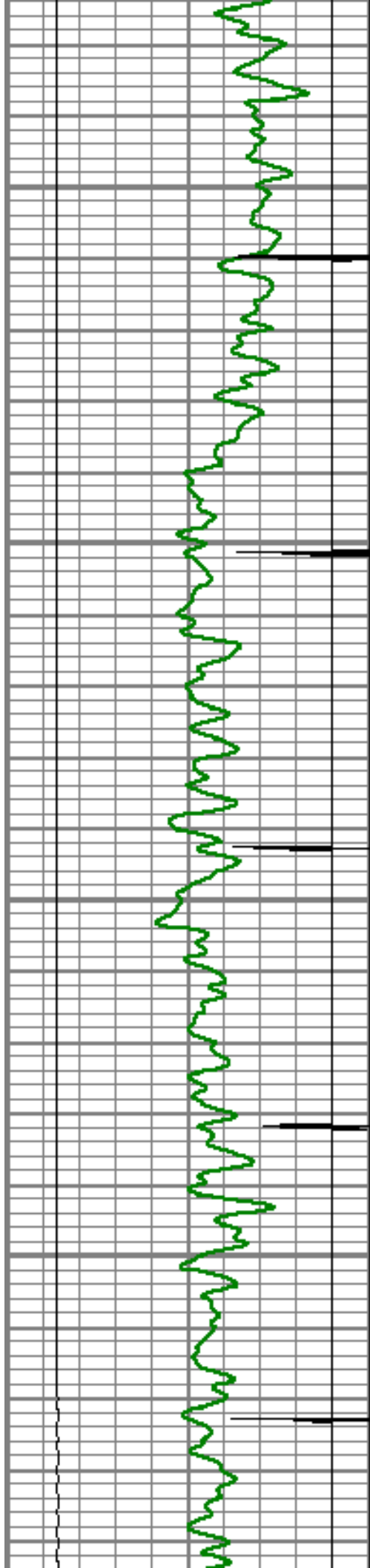
3600

3650

3700

3750



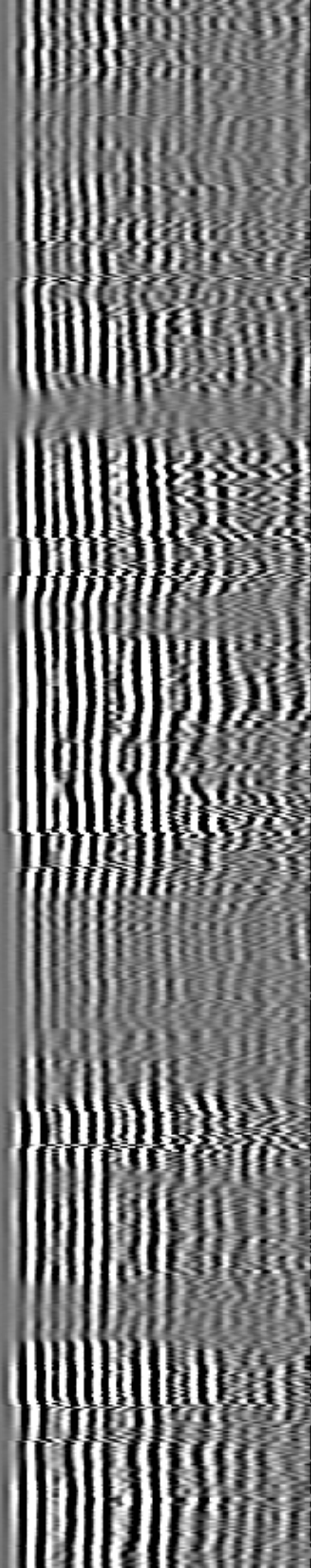
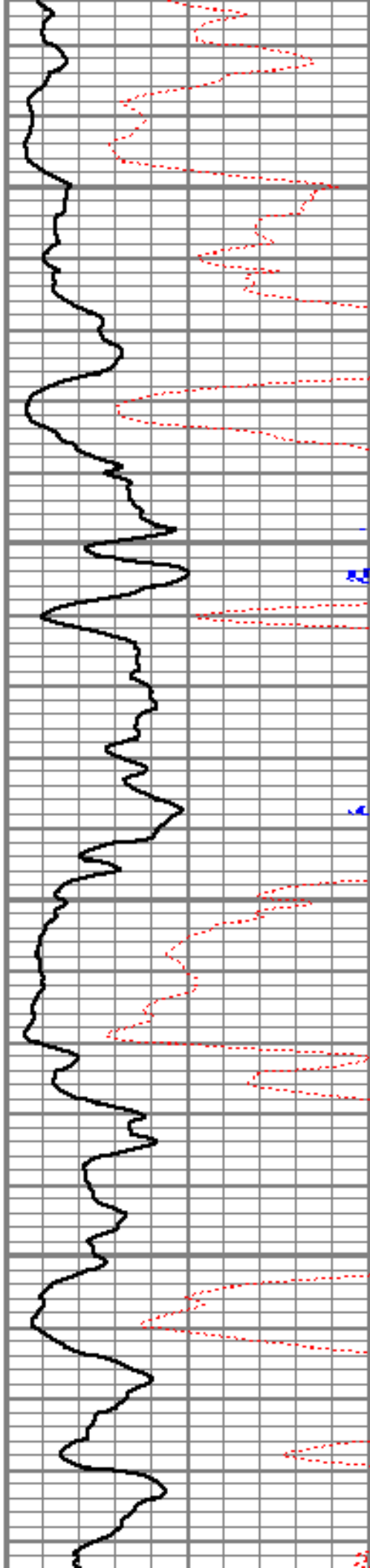


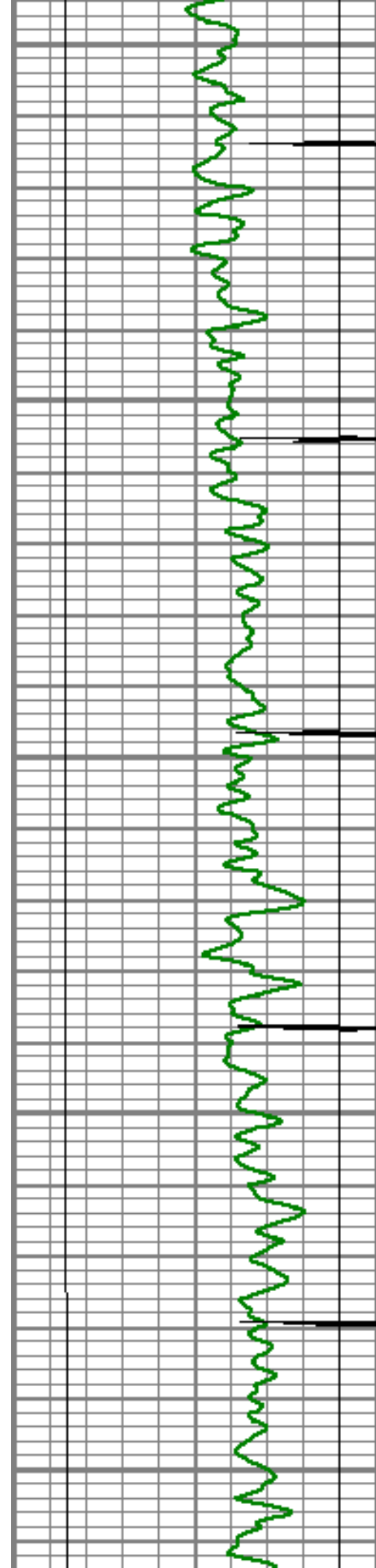
3800

3850

3900

3950





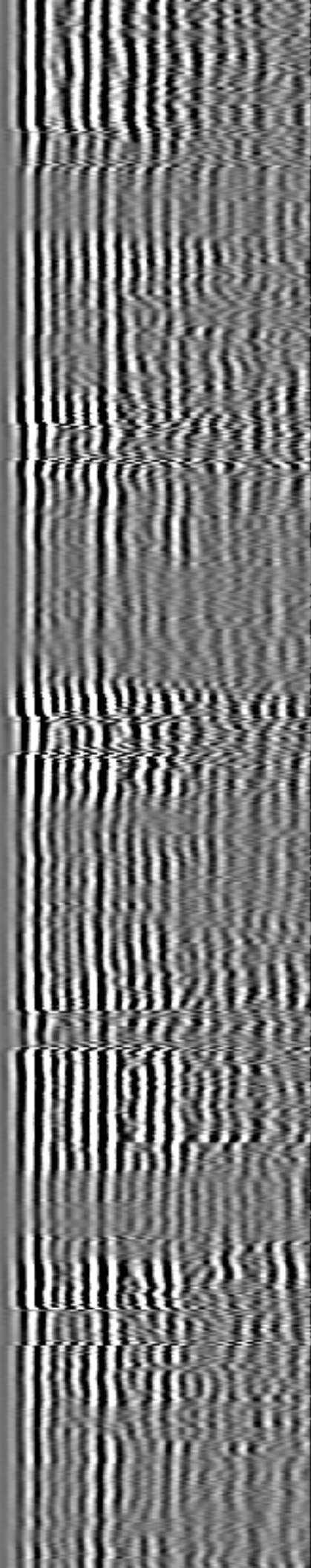
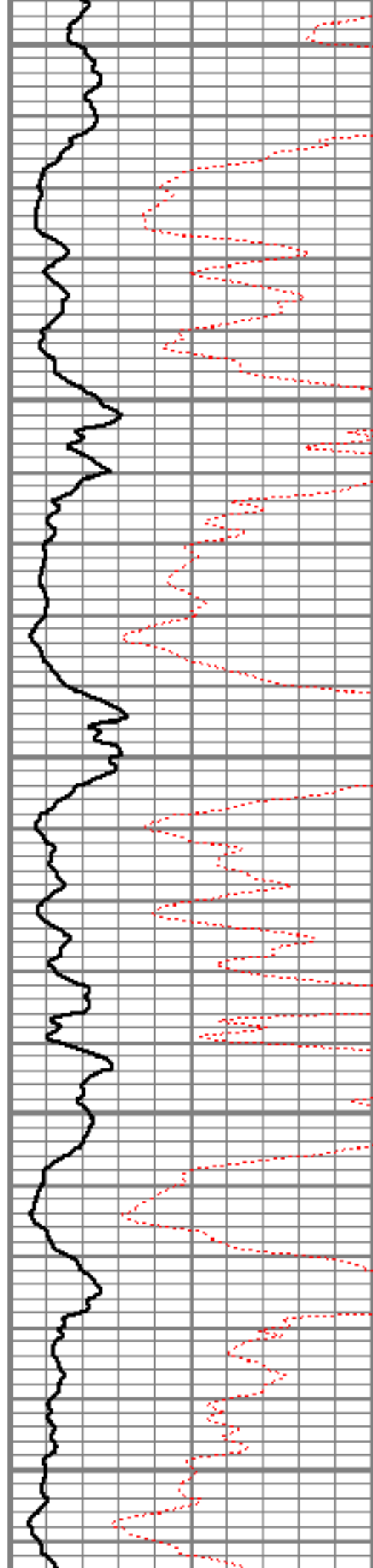
4000

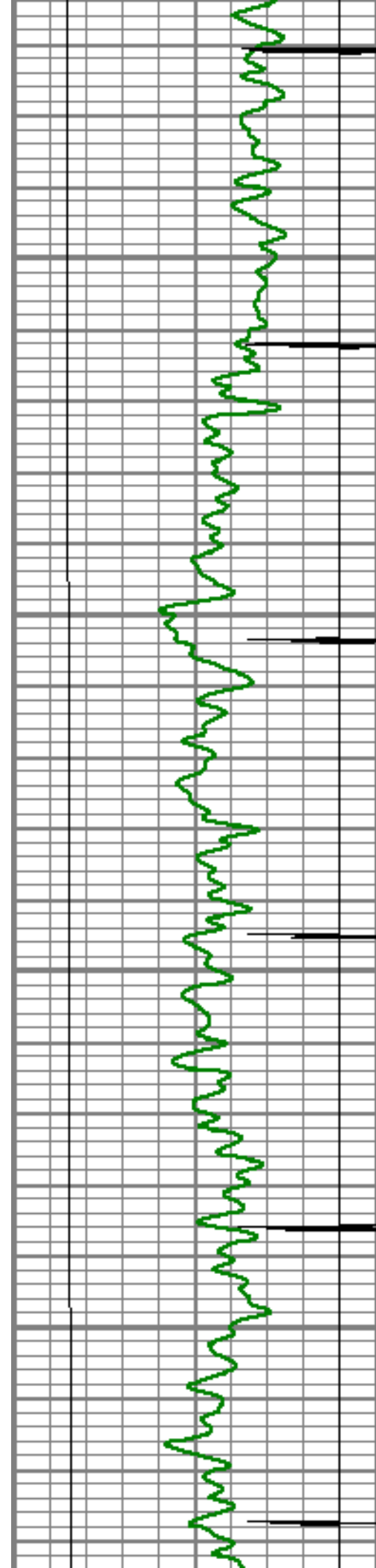
4050

4100

4150

4200



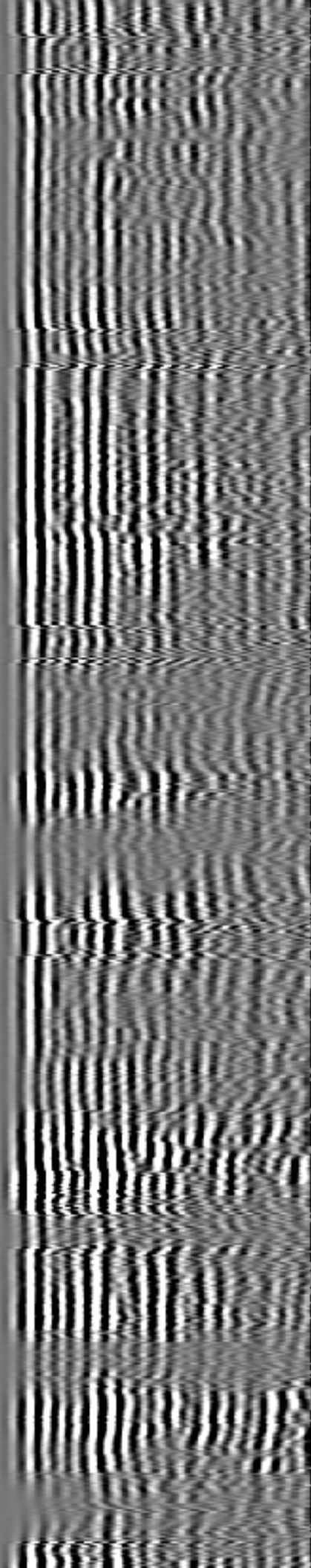
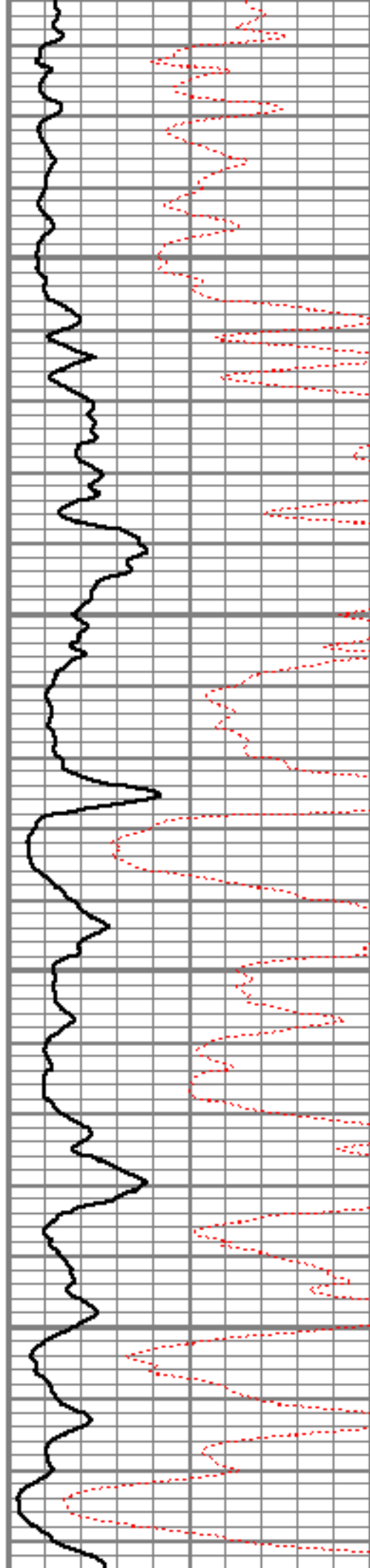


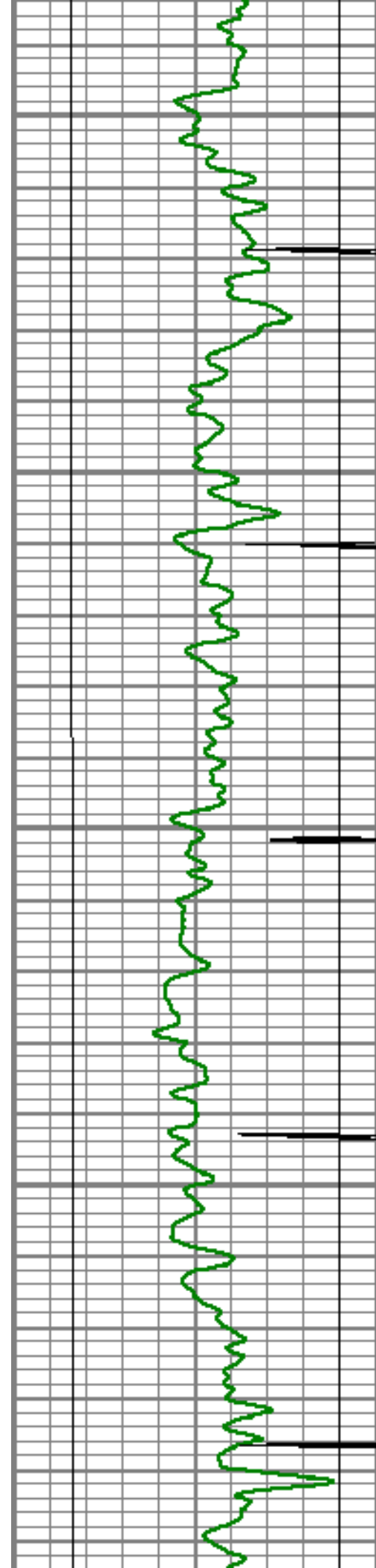
4250

4300

4350

4400





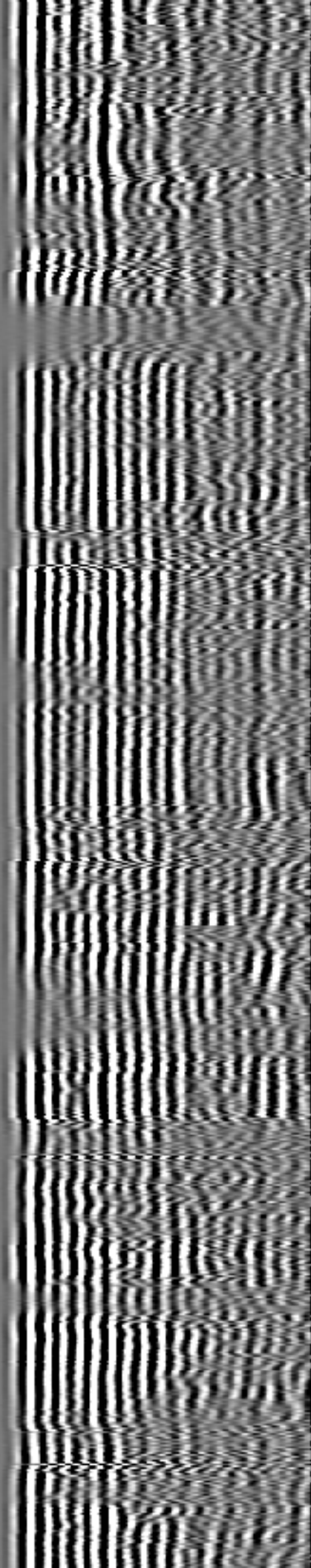
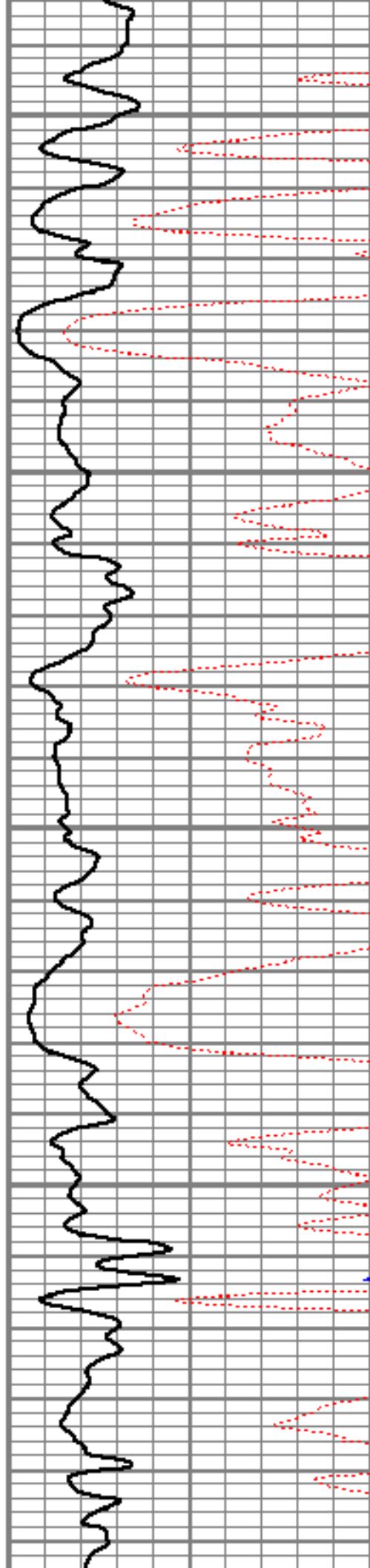
4450

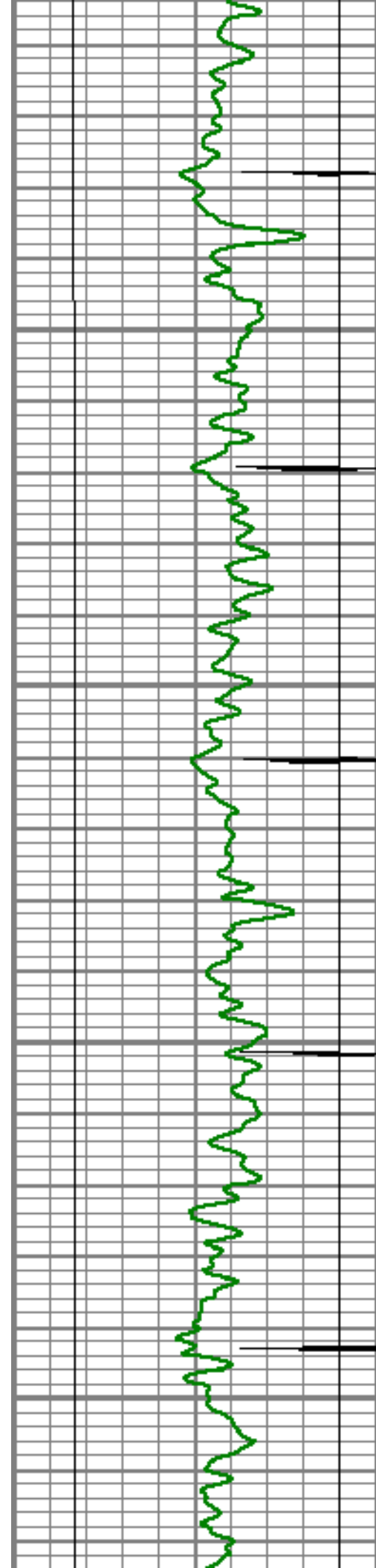
4500

4550

4600

4650



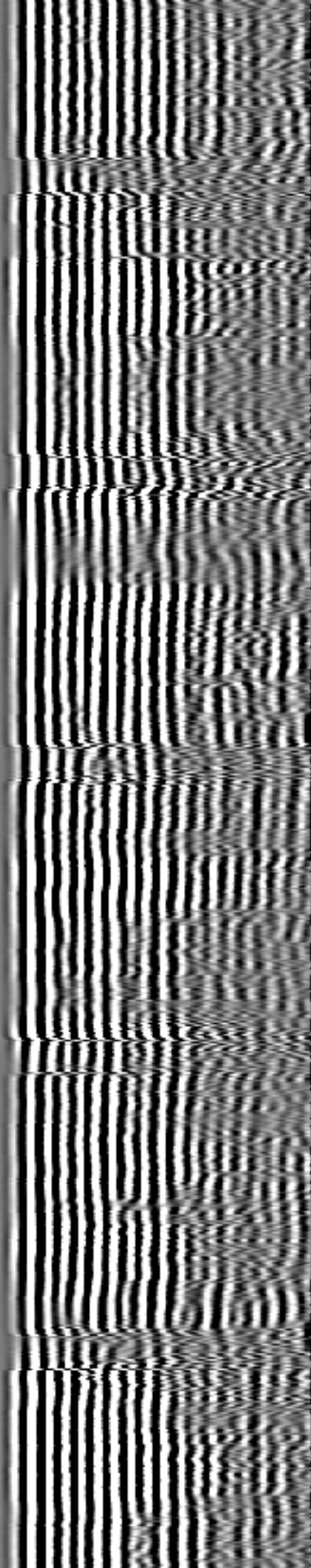
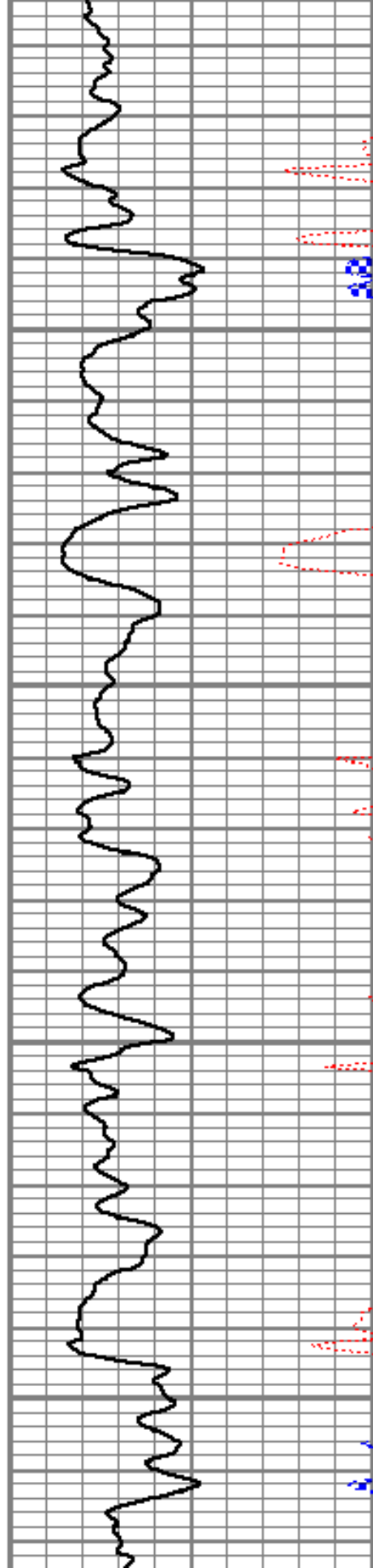


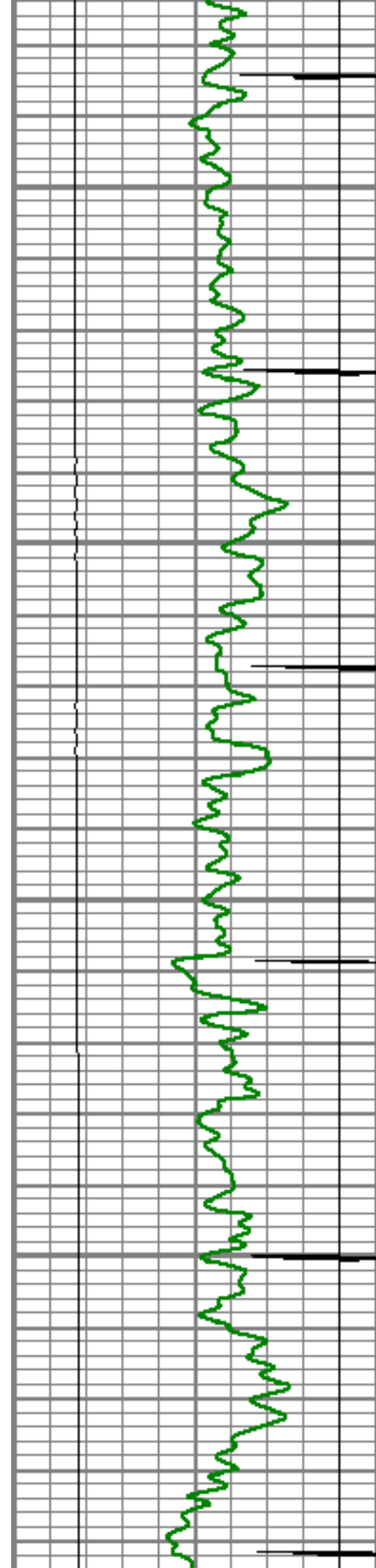
4700

4750

4800

4850



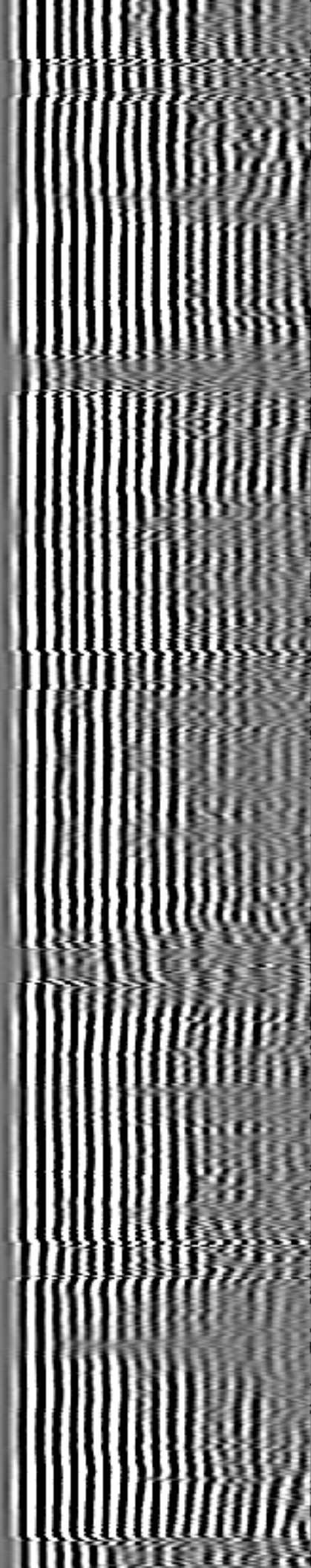
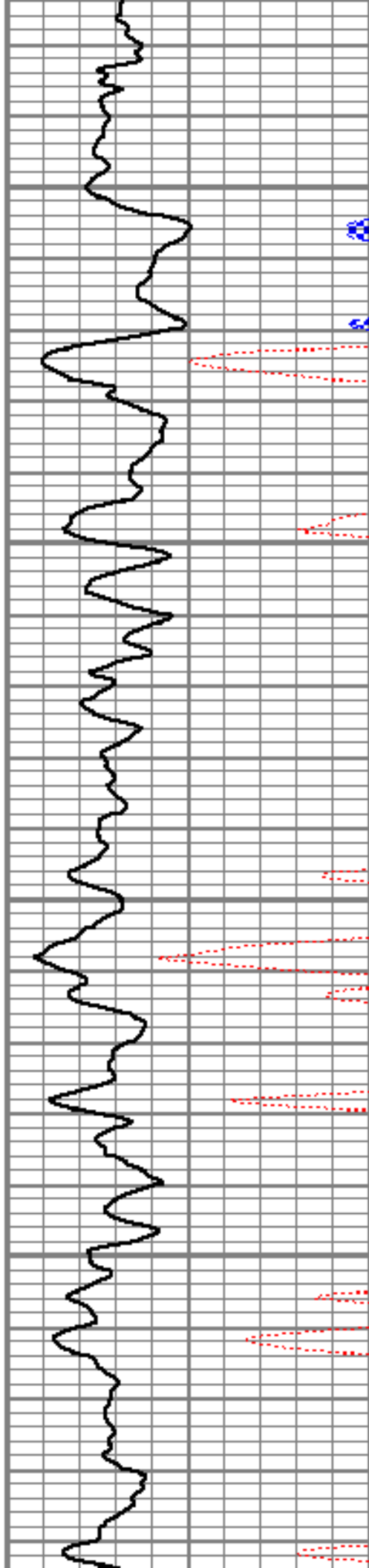


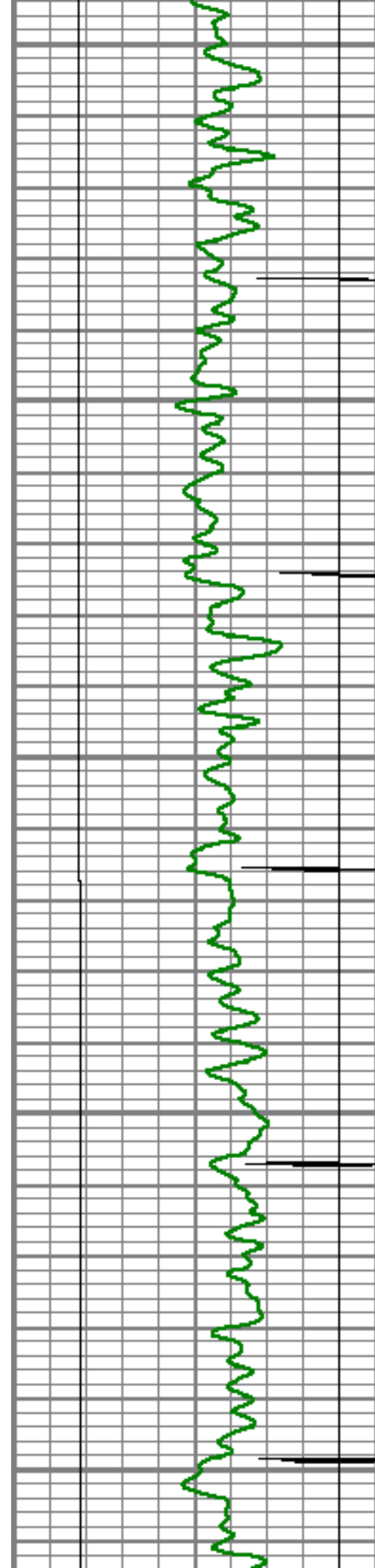
4900

4950

5000

5050





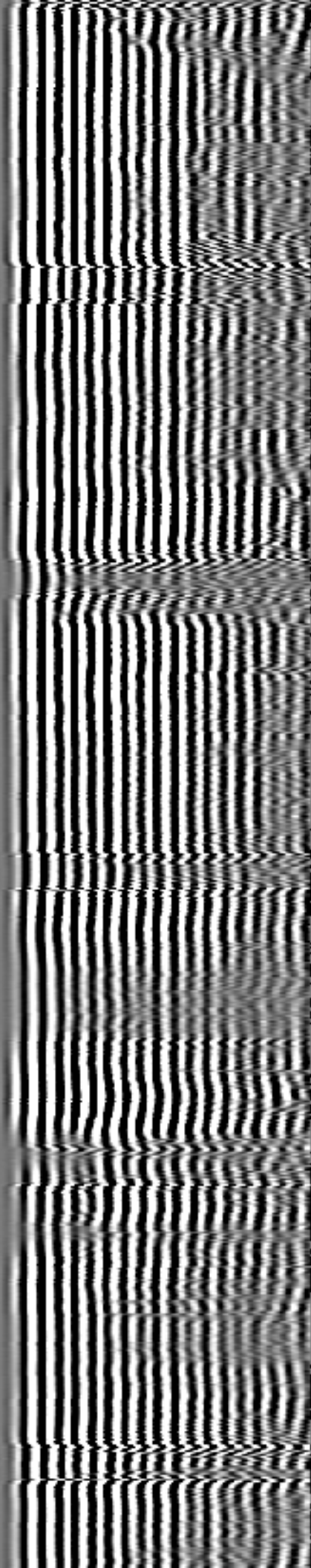
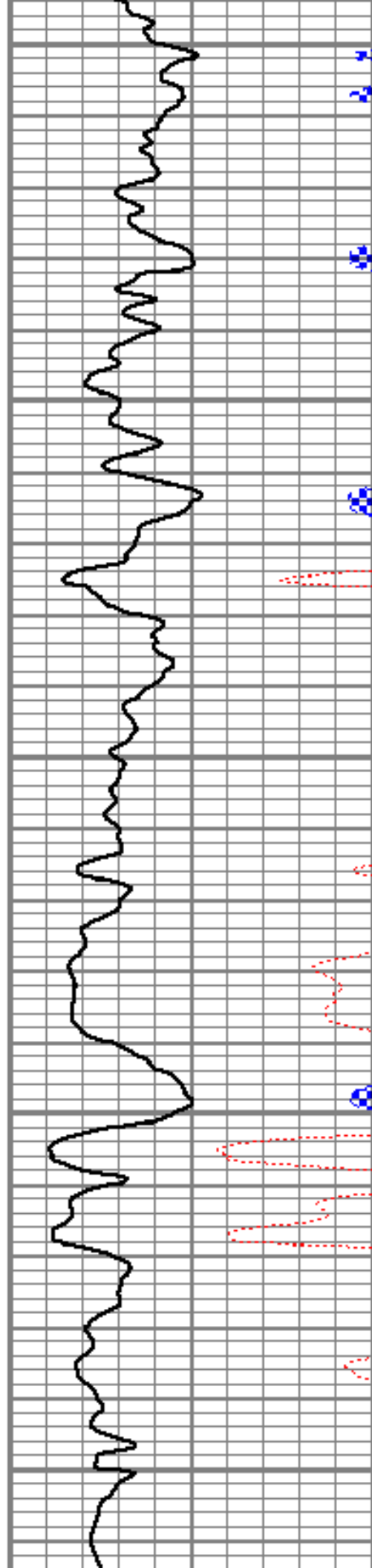
5100

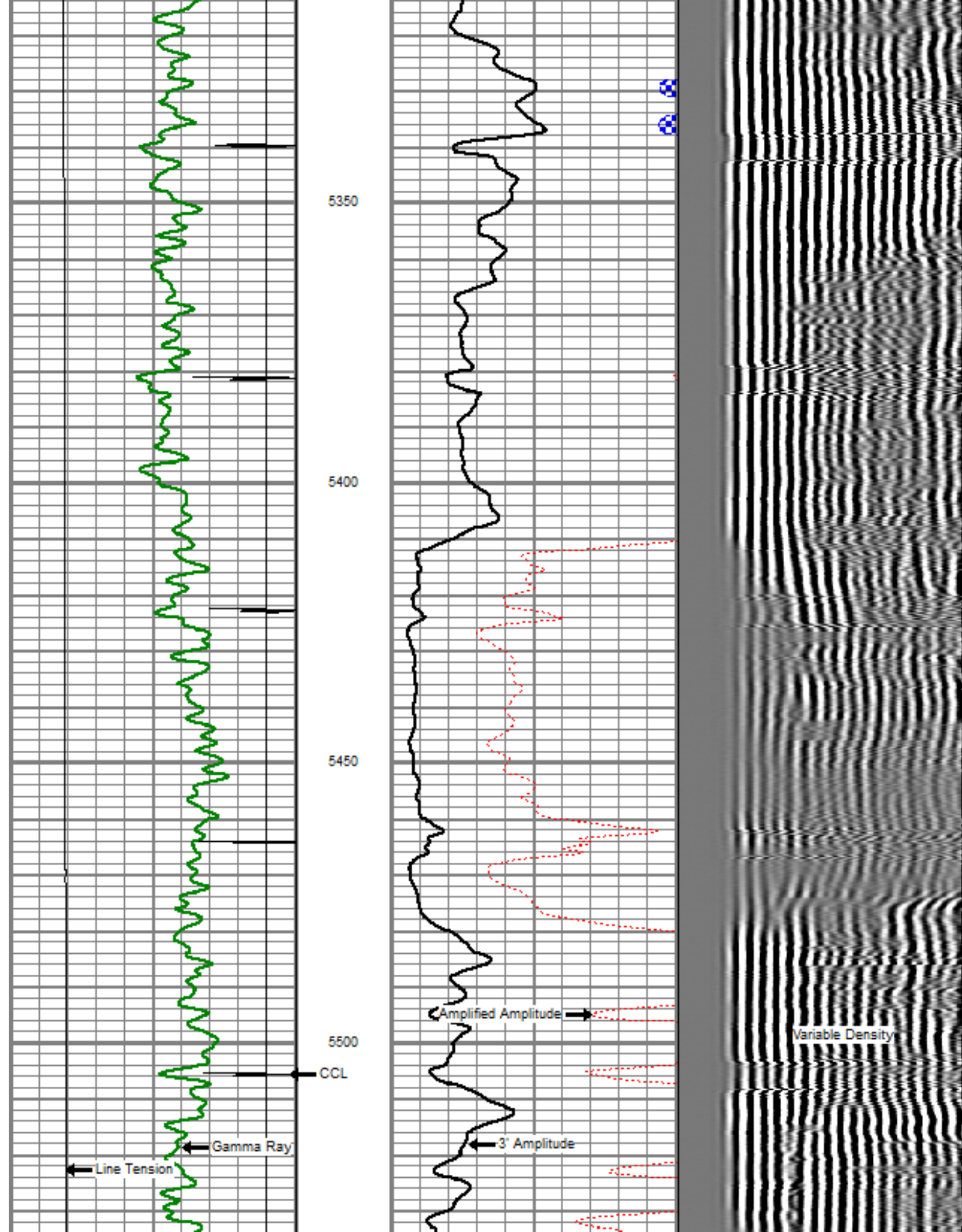
5150

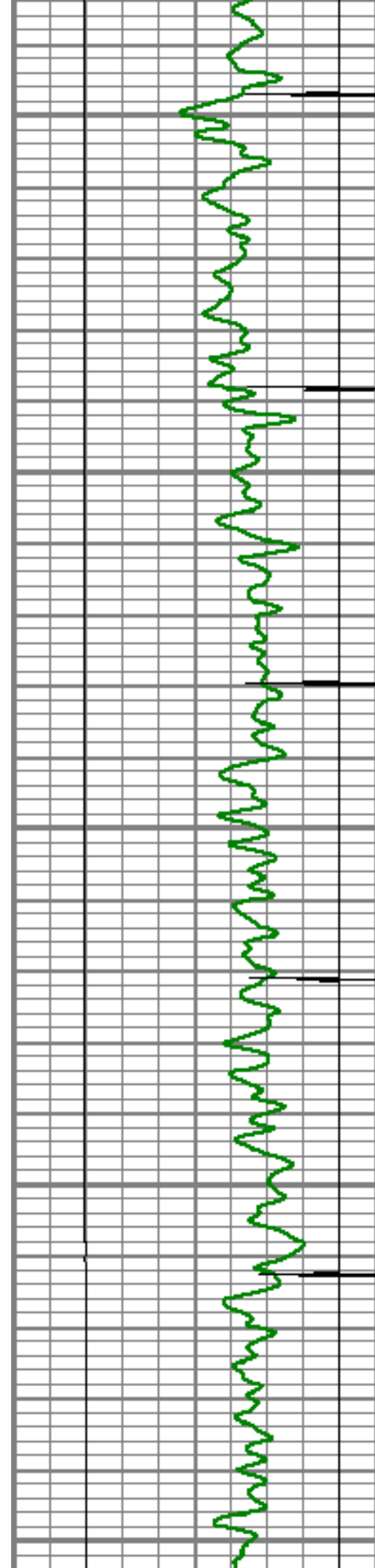
5200

5250

5300







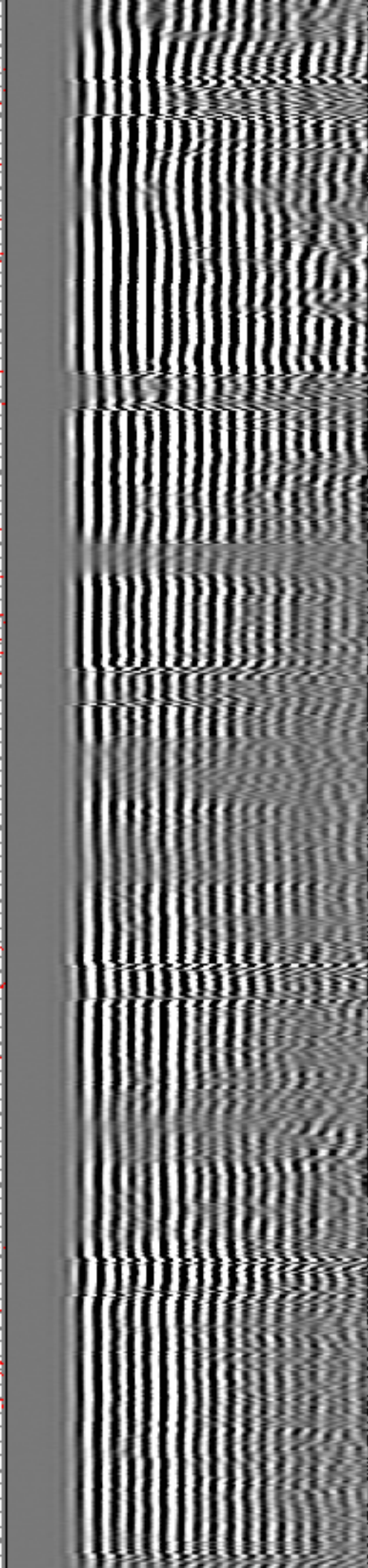
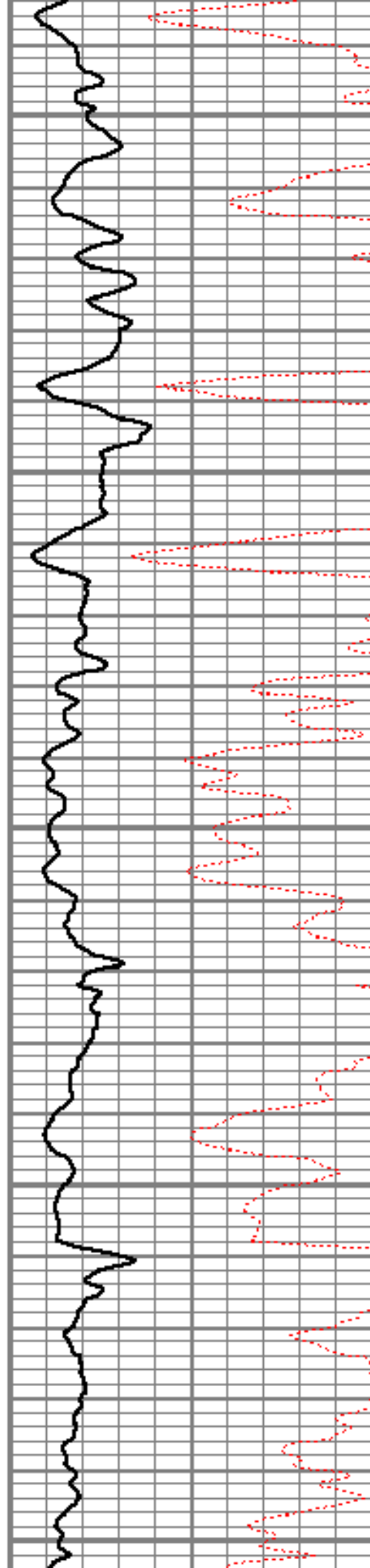
5550

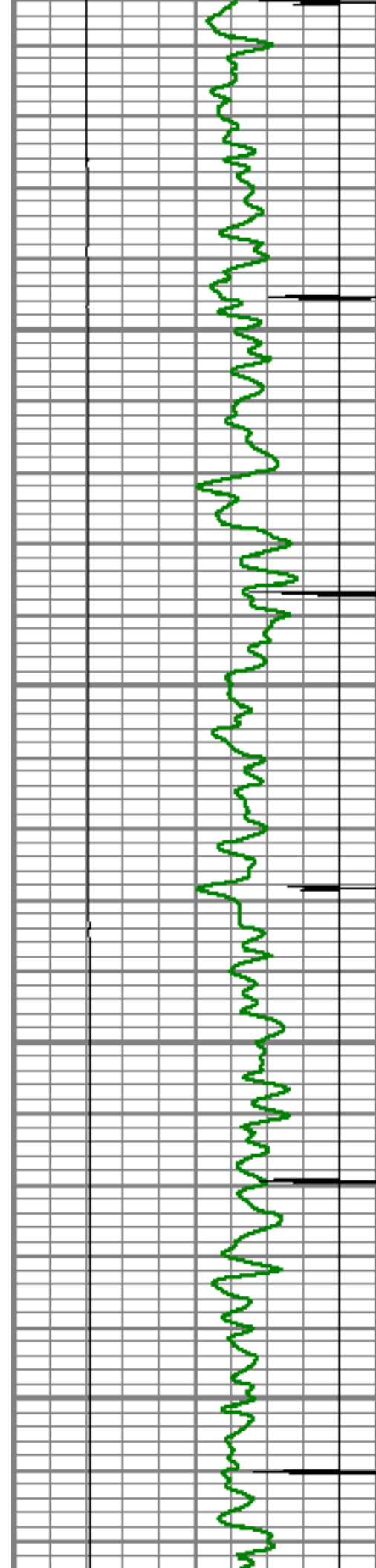
5600

5650

5700

5750



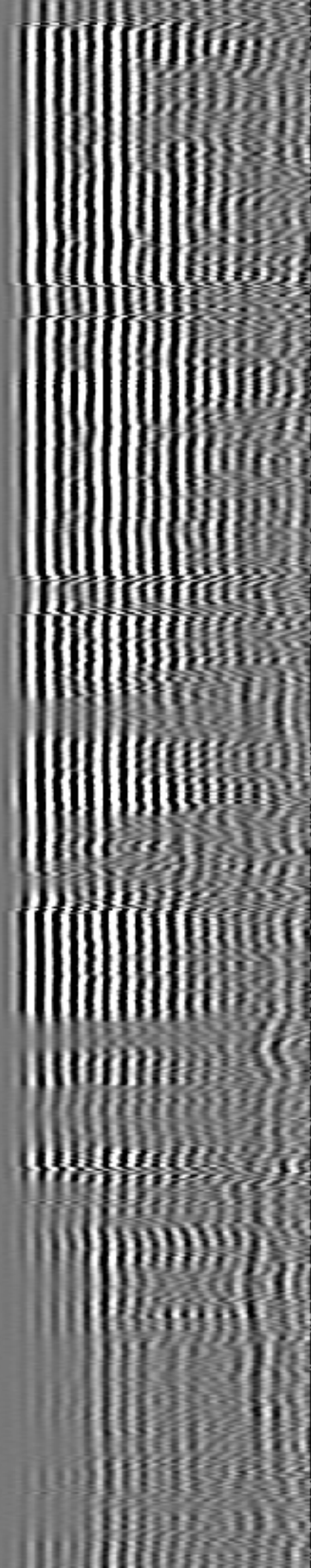
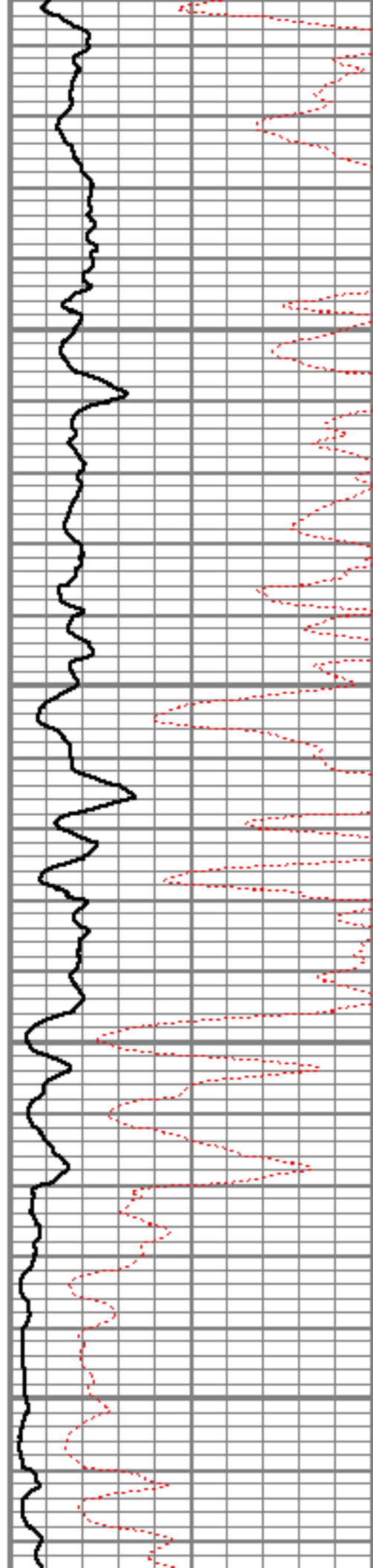


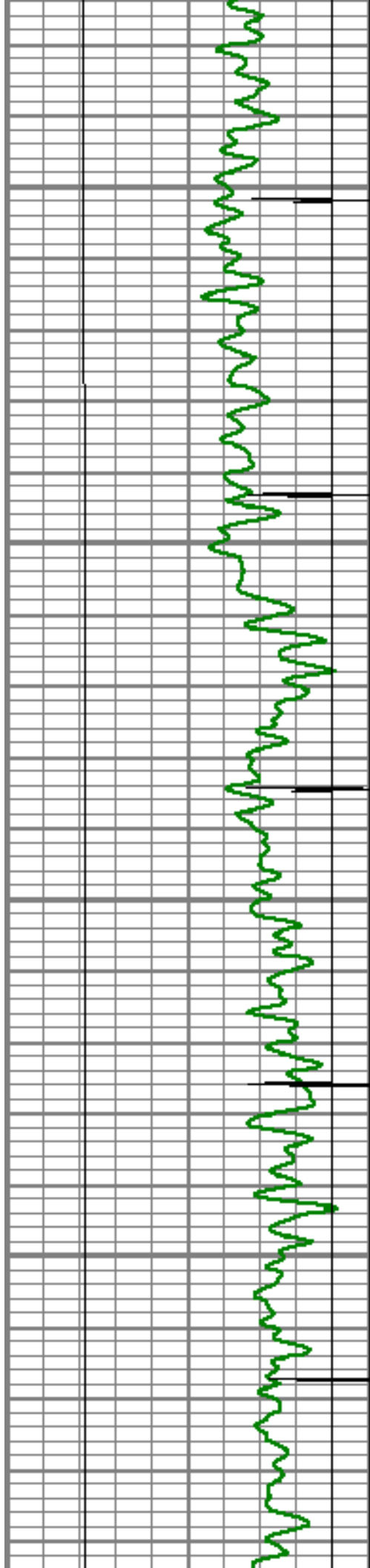
5800

5850

5900

5950



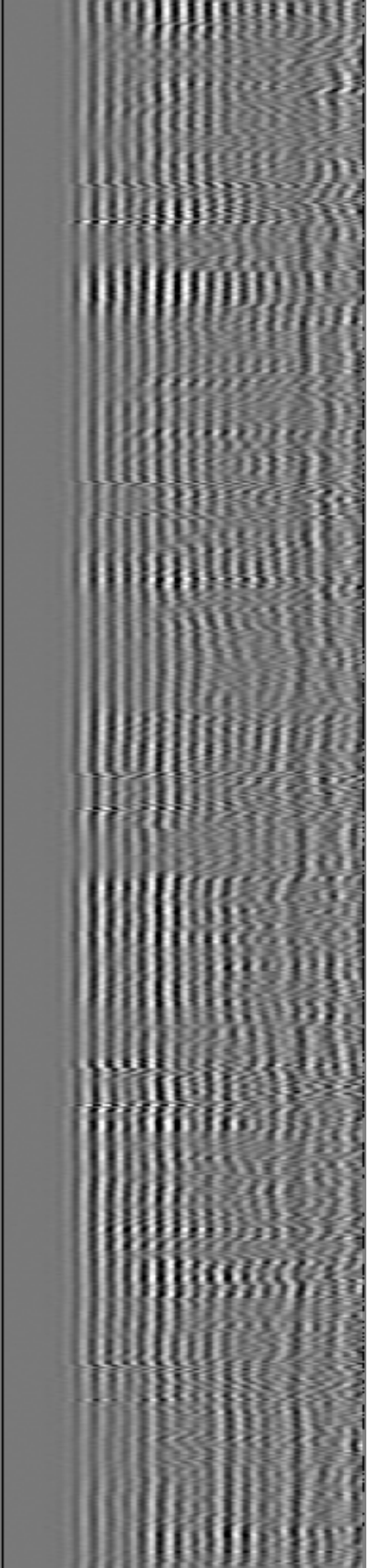
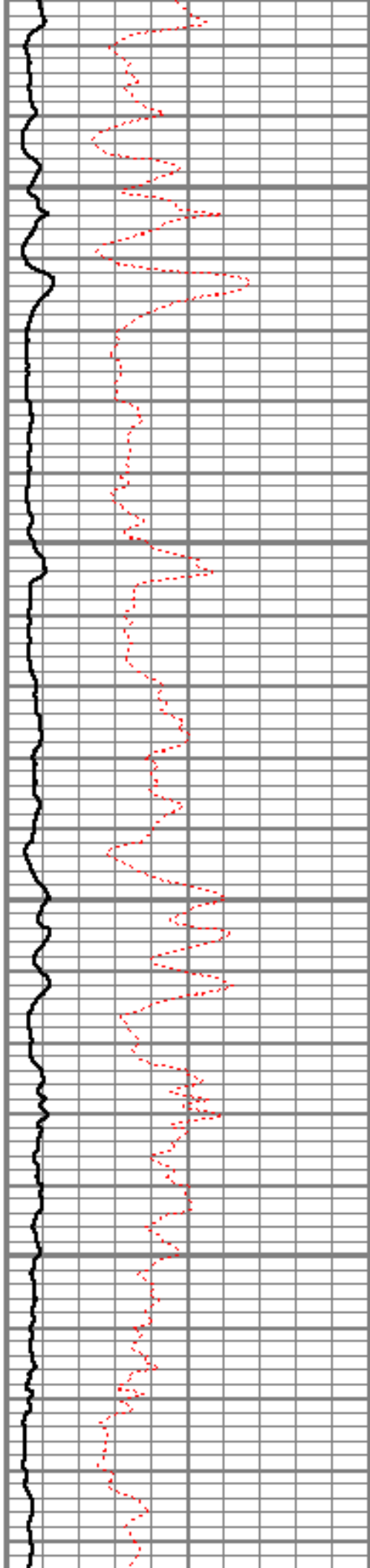


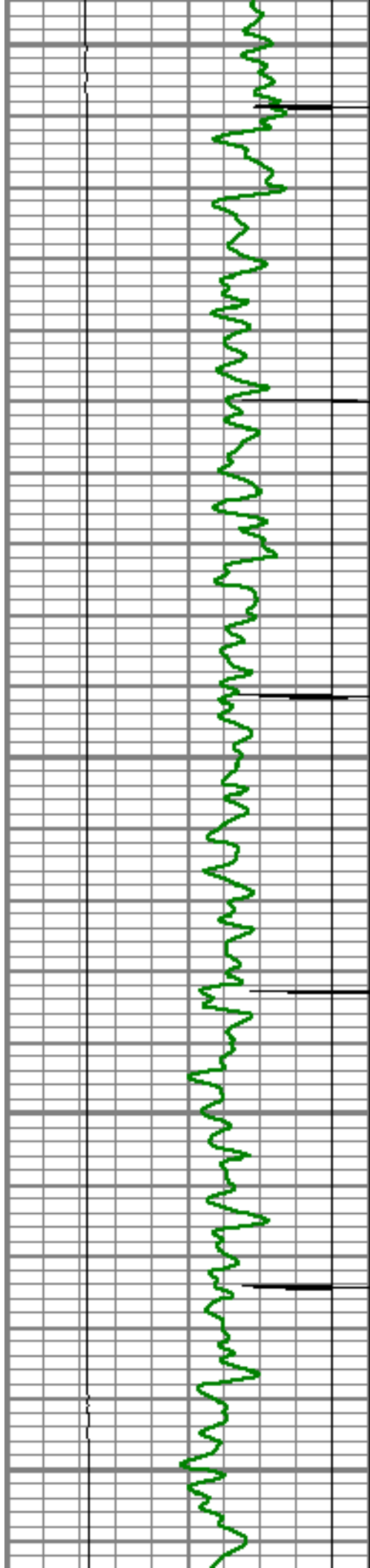
6000

6050

6100

6150





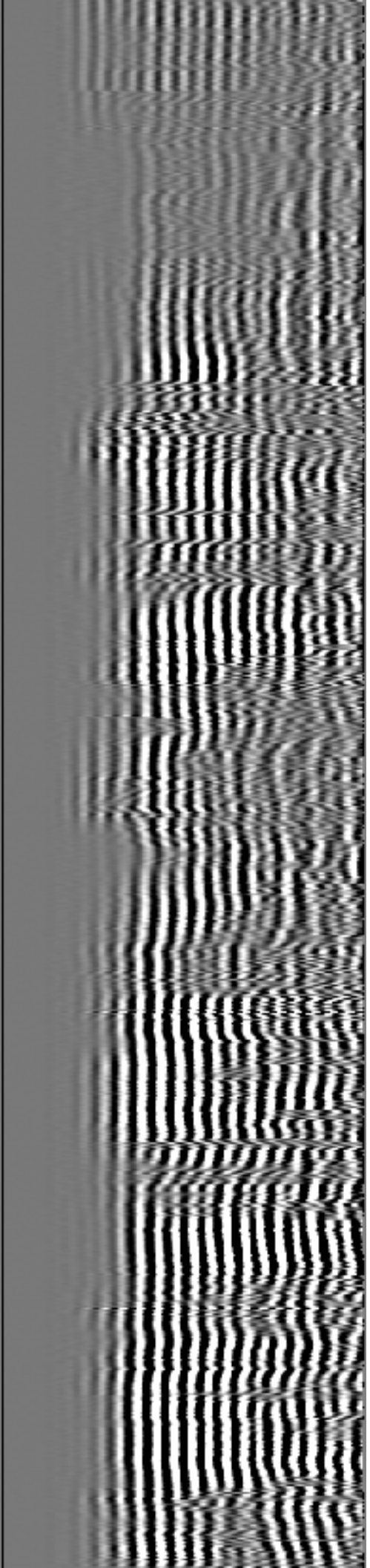
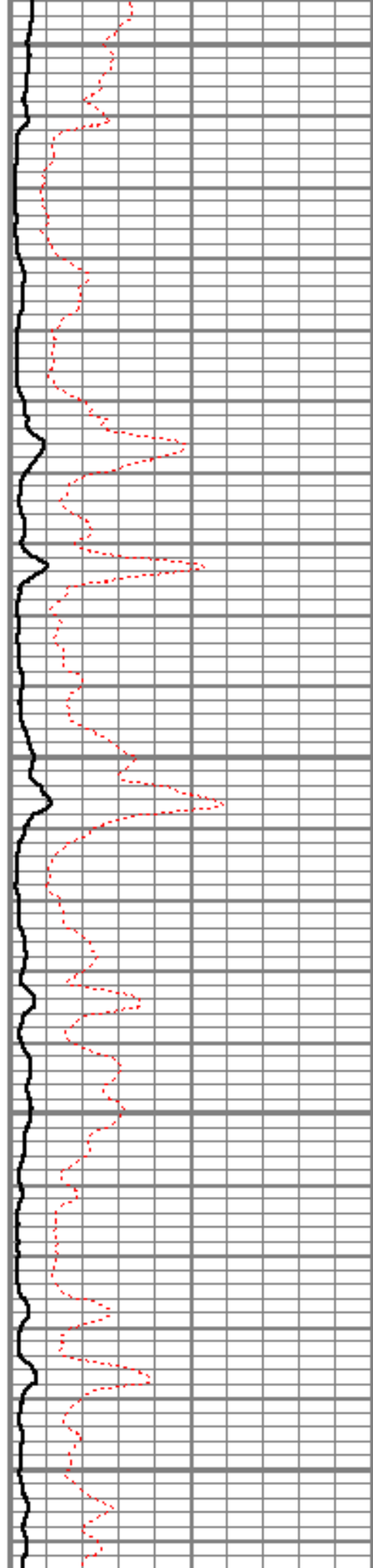
6200

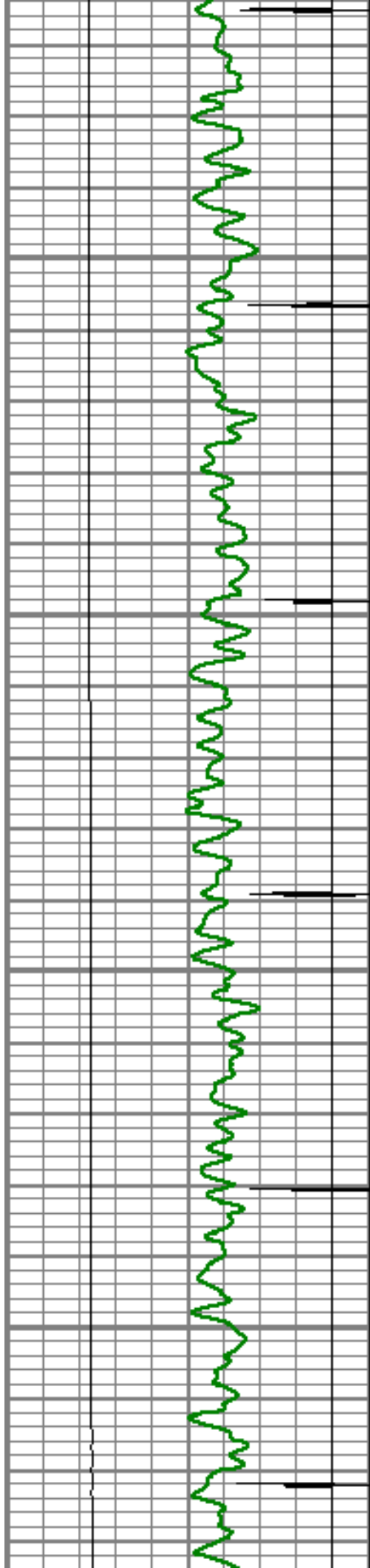
6250

6300

6350

6400



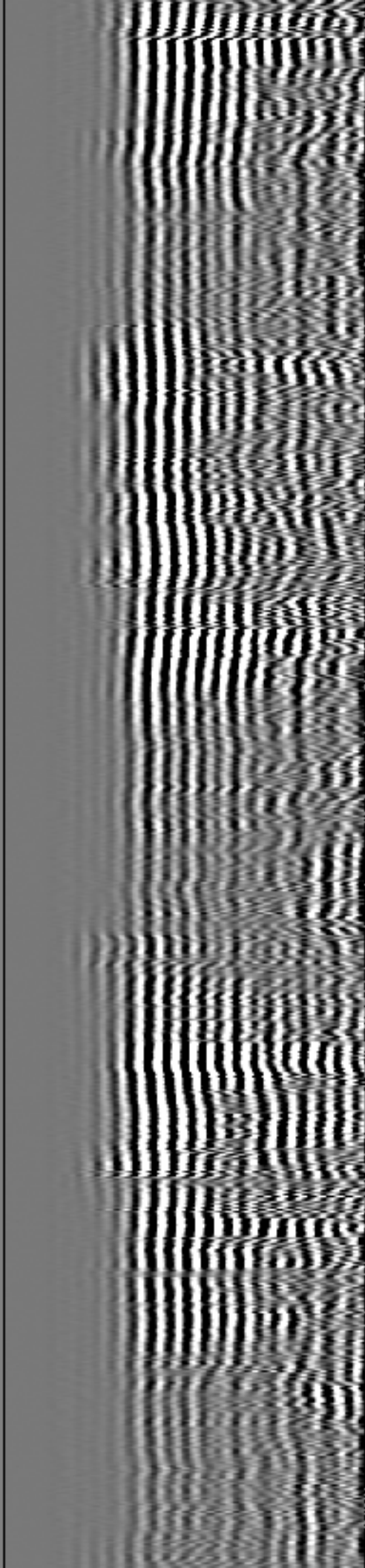
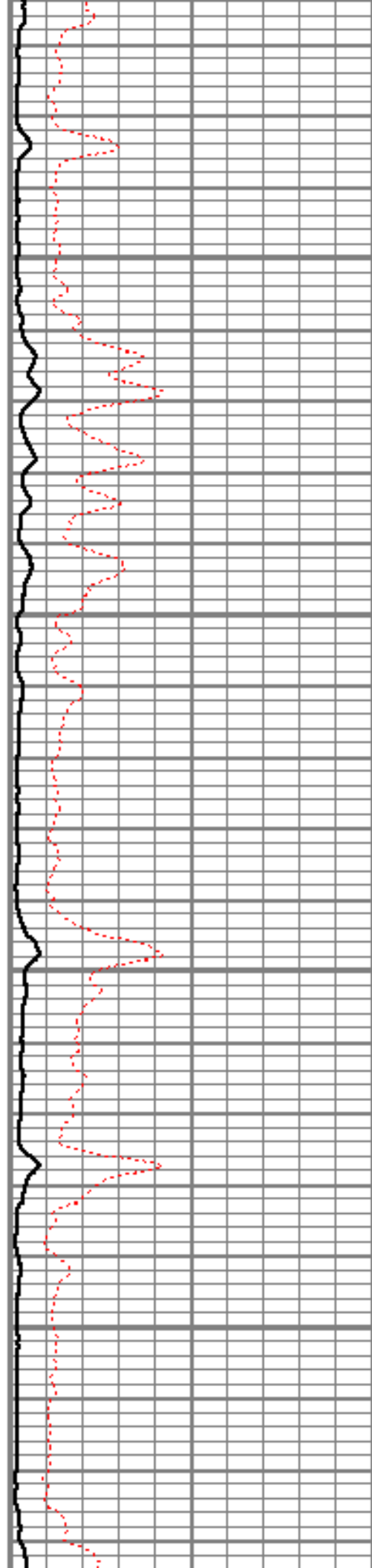


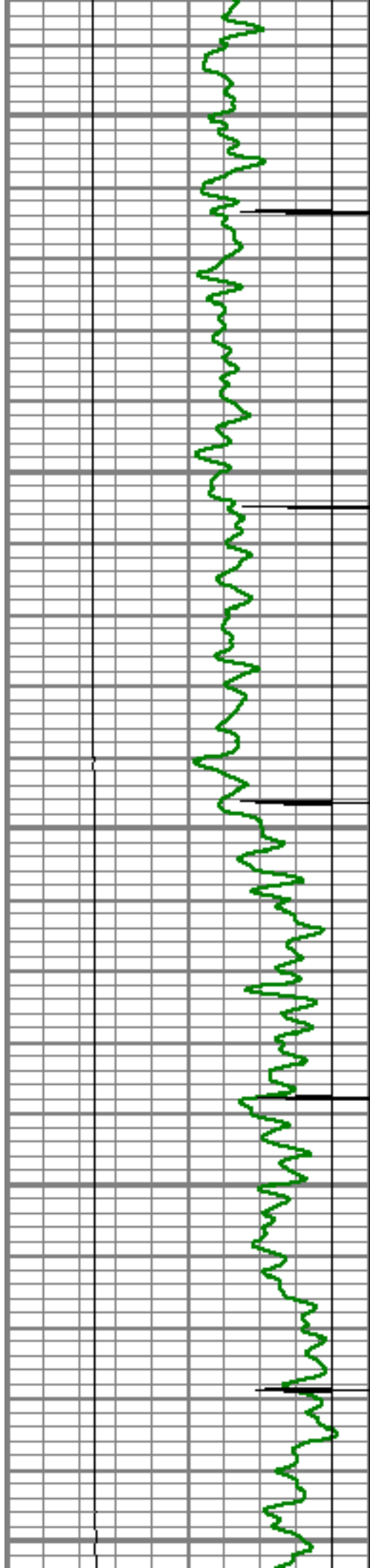
6450

6500

6550

6600





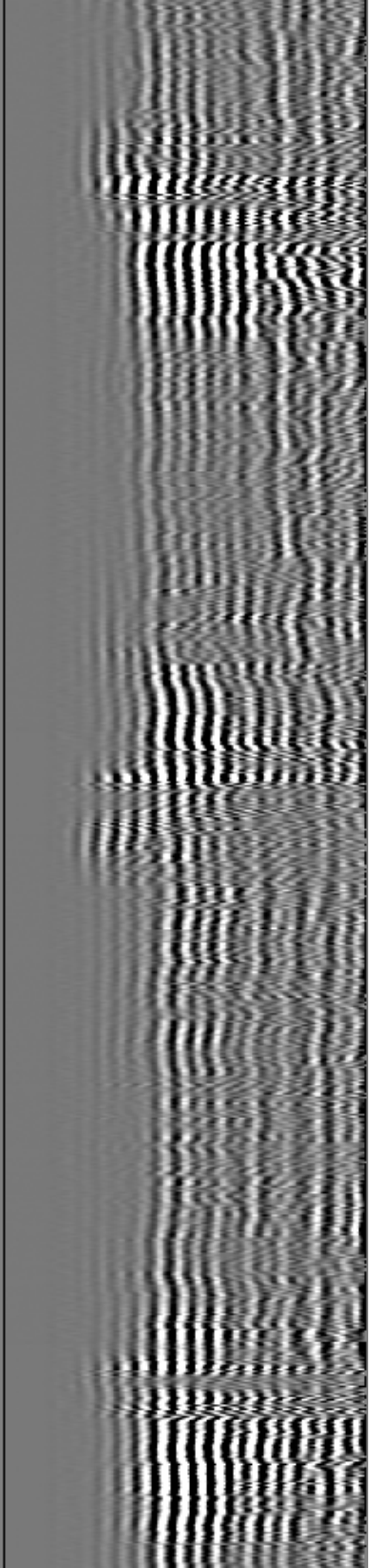
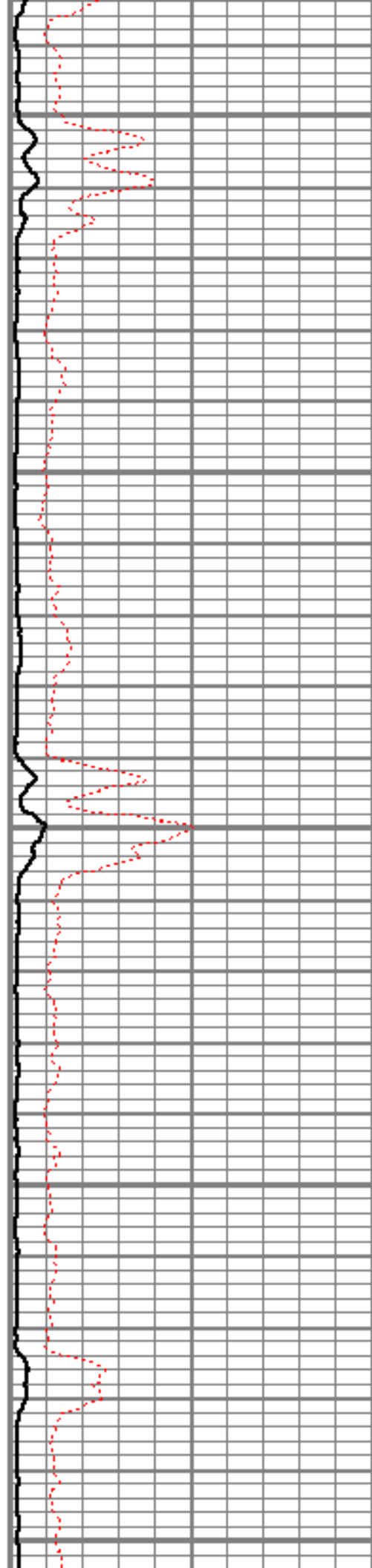
6650

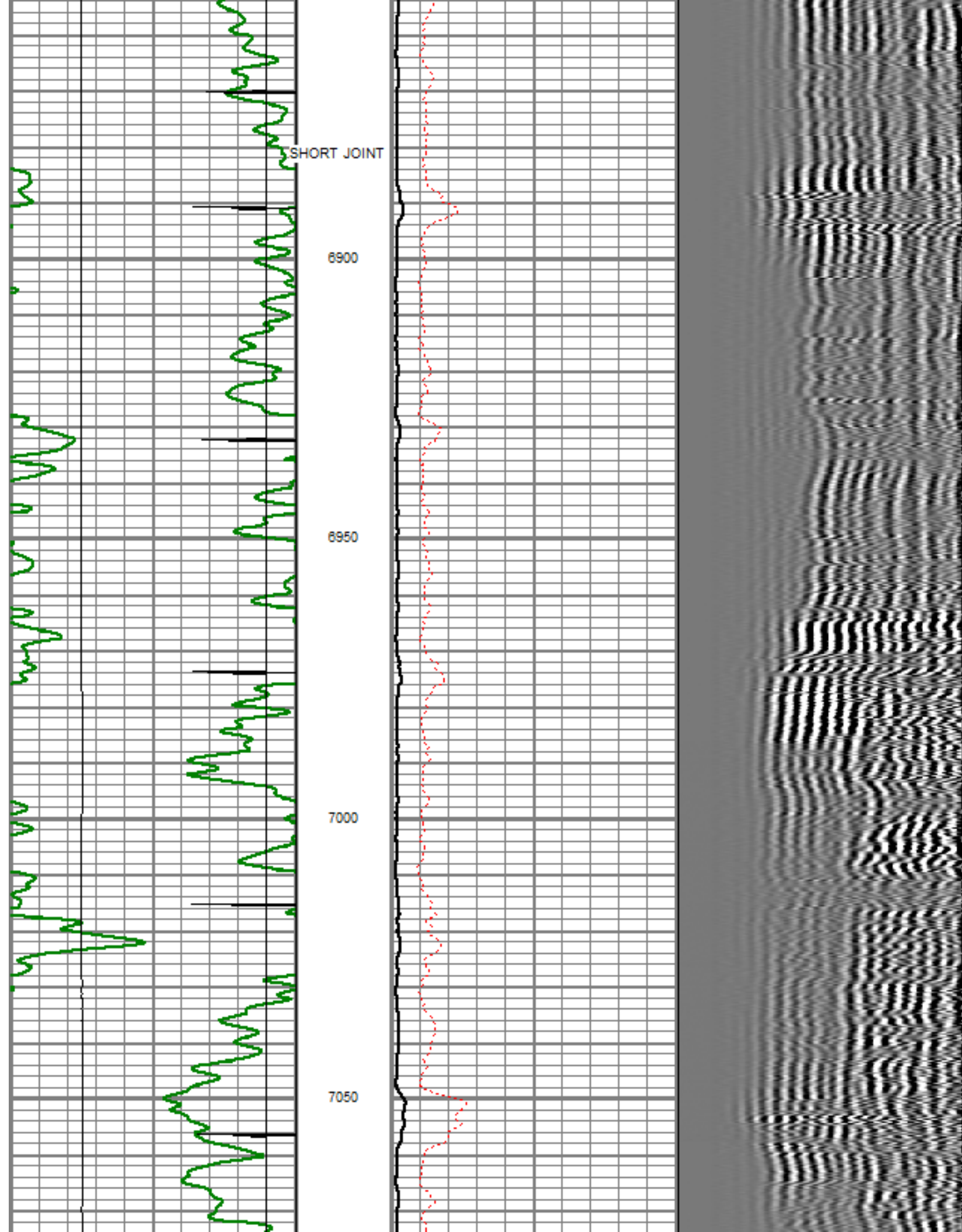
6700

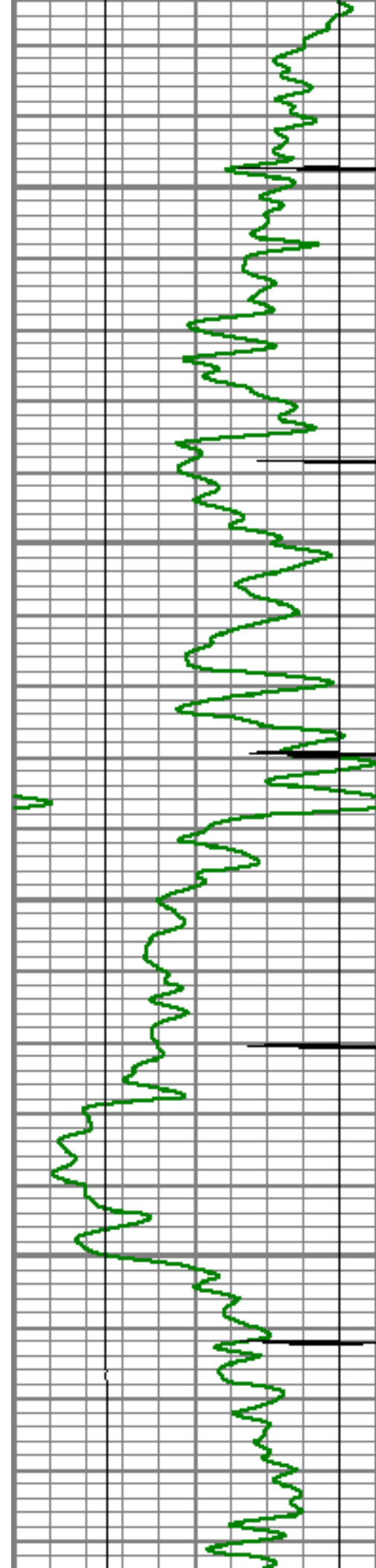
6750

6800

6850





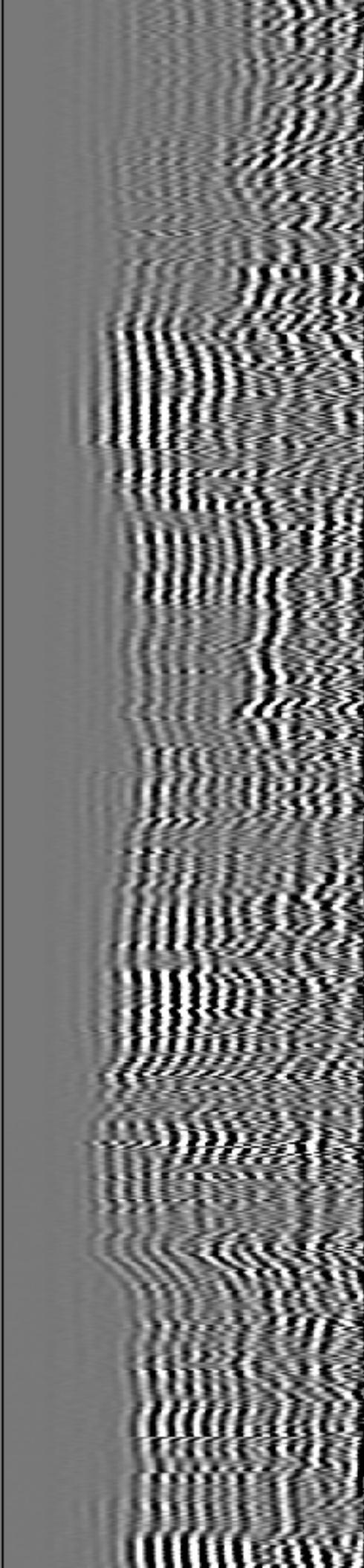
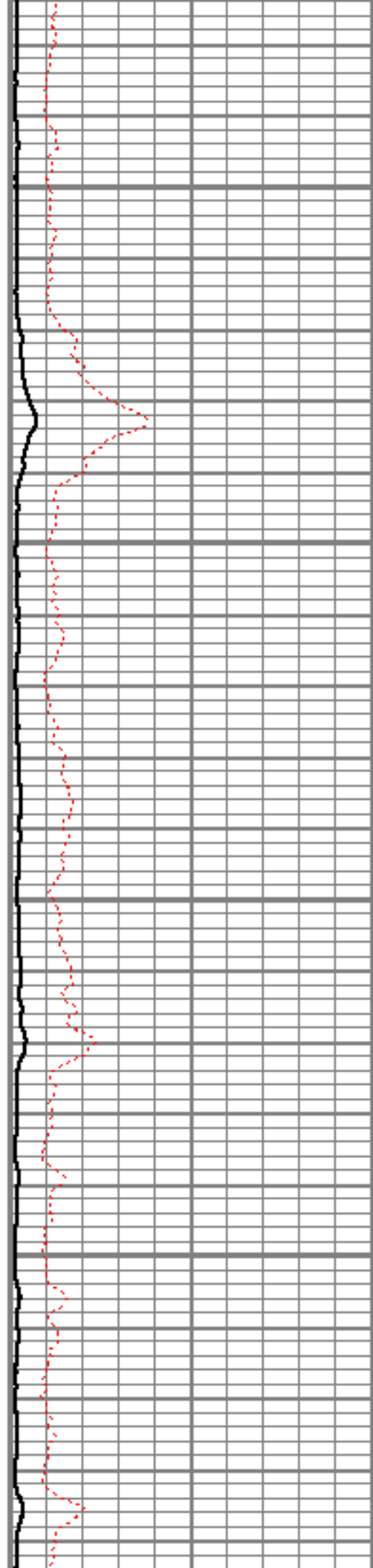


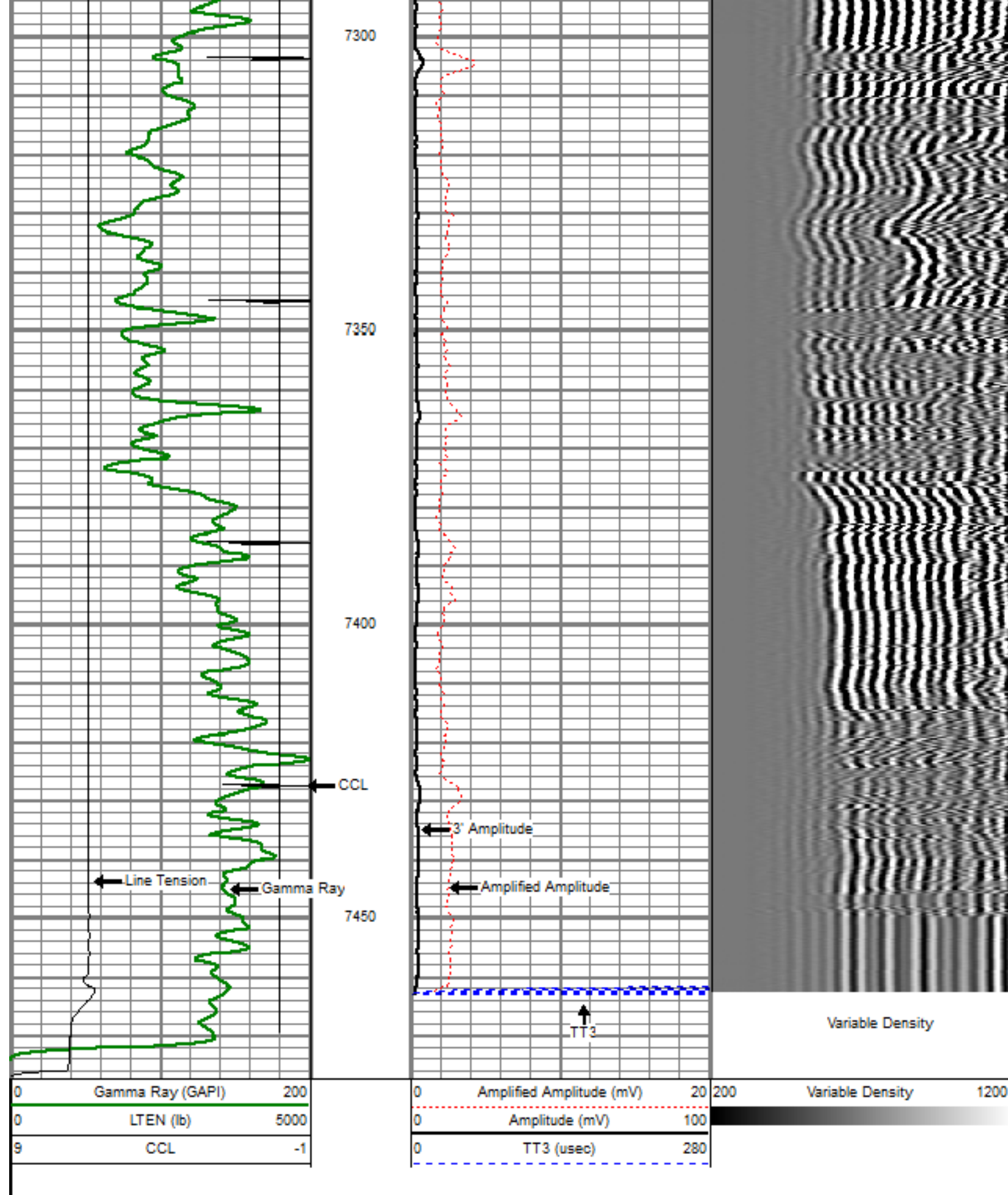
7100


7150

7200

7250





Sensor	Offset (ft)	Schematic	Description	Len (ft)	OD (in)	Wt (lb)
			titan	1.02	1.44	1.50

				Titan Cable Head Go Pin.	0.02	0.01	0.00
				Centralizer-Probe (CENT-PROBE-1) Probe Bowspring Centralizer	2.88	2.75	10.00
WVF3	14.54						
WVF5	13.54			CBL-PRB_CBL_DIGITAL (PRB_CBL_DIG_28.77 1) Probe 2.75" Dual Receiver Bond		2.75	60.00
				Centralizer-Probe (CENT-PROBE-2) Probe Bowspring Centralizer	2.88	2.75	10.00
CCL	6.50						
				GR-PROBE_GRCL (PRB_GRCL_275_014.54) Probe 2.75" 4 Channel Pulse		2.75	30.00
GR	3.77						
				TEMP-Comprobe (TEMP_CMPRB_1375_012.88) Positive pulse Temp tool		1.38	15.00
TEMP	0.17						
Dataset: aristocrat angus 6-4-4.db: field/well/run1/pass6.2OH Total Length: 22.96 ft Total Weight: 126.50 lb O.D. 2.75 in							





Company	ENGAGE OIL & GAS (USA) INC
Well	ARISTOCRAT ANGUS 6-4-4
Field	WATTENBERG
County	WELD
State	COLORADO