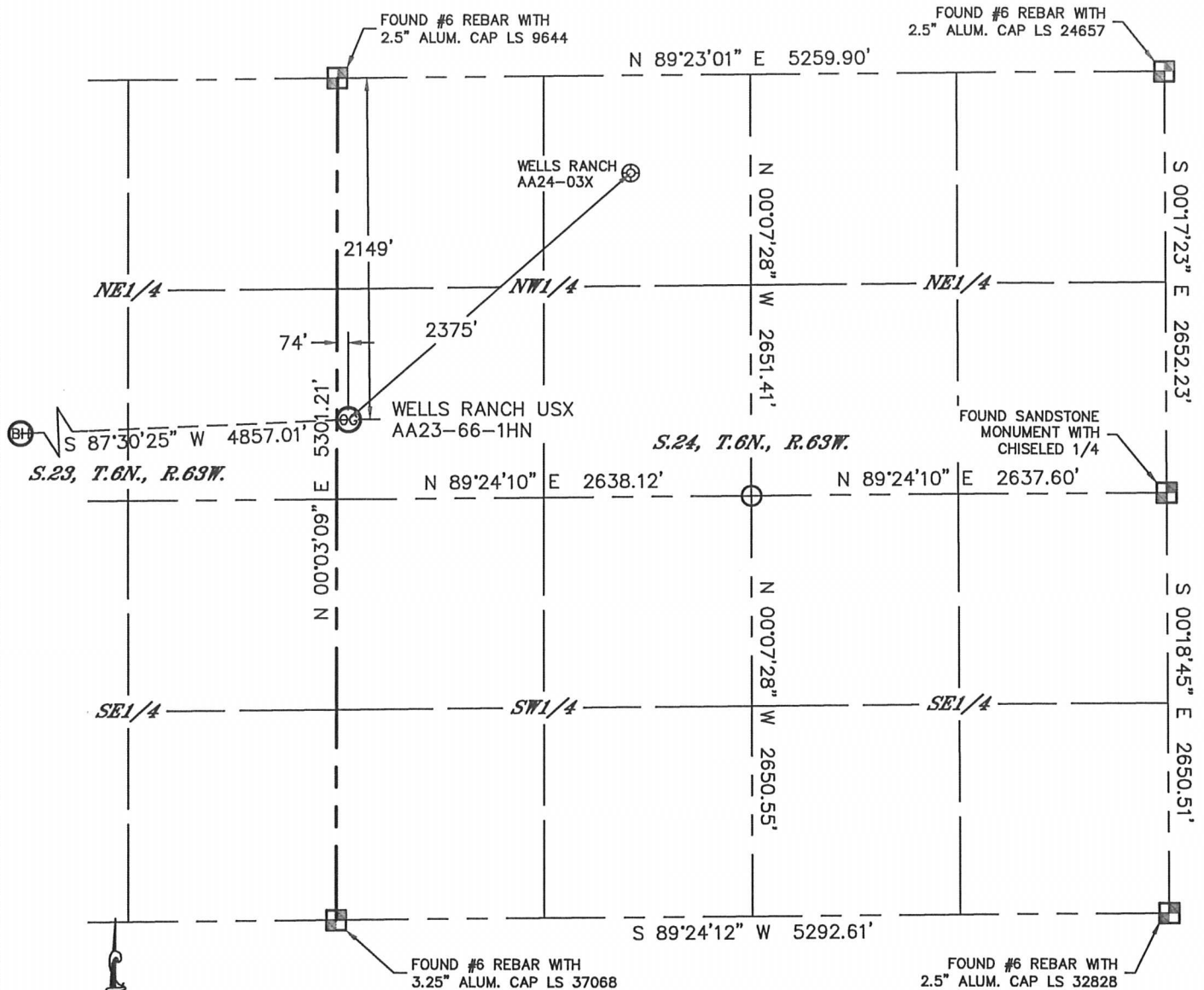


WELL LOCATION CERTIFICATE

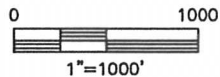
THIS MAP DOES NOT REPRESENT A BOUNDARY SURVEY

SECTION: 24
TOWNSHIP: 6N
RANGE: 63W



In accordance with a request from Greg Wilson with Noble Energy Inc., Lat40°, Inc. has determined the surface location of the WELLS RANCH USX AA23-66-1HN to be 2149' from the NORTH line and 74' from the WEST line as measured at right angles from the section lines of Section 24, Township 6 North, Range 63 West and the bottom hole to be 2310' from the NORTH line and 535' from the WEST line as measured at right angles from the section lines of Section 23, Township 6 North, Range 63 West of the Sixth Principal Meridian, County of Weld, State of Colorado.

I hereby state that this Well Location Certificate was prepared by me, or under my direct supervision, that the fieldwork was completed on 6/21/2012, for and on behalf of Noble Energy Inc.. That this is not a Land Survey Plat or an Improvement Survey Plat, and that it is not to be relied upon for establishment of fence, building, or other future improvement lines.



NOTE:

- 1) Bearings shown are Grid Bearings of the Colorado State Plane Coordinate System, North Zone, North American Datum 1983/2007. The lineal dimensions as contained herein are based upon the "U.S. Survey Foot."
- 2) Ground elevations are based on an observed GPS elevation (NAVD 1988 DATUM).
- 3) NEAREST EXISTING WELL: WELLS RANCH AA24-03X, 2375'
- 4) IMPROVEMENTS: See LOCATION DRAWING for all visible Improvements within 400' of disturbed area.
- 5) SURFACE USE: RANGELAND
- 6) INSTRUMENT OPERATOR: ADAM KELLY

NOTE

According to Colorado law, you must commence any legal action based upon any defect in this W.L.C. within three years after you discover such defect. In no event, may any action based upon any defect in this survey be commenced more than ten years after the date of the certificate shown hereon. (13-80-105 C.R.S.)

LEGEND

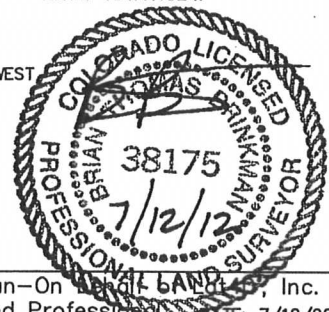
- = ALIQUOT MONUMENT AS DESCRIBED
- = CALCULATED POSITION

SURFACE LOCATION

LAT: 40.47339°N
LONG: 104.39418°W
PDOP: 1.5
ELEV: 4808'
1/4,1/4: SW1/4NW1/4
NEAREST PROPERTY LINE: 74' WEST

BOTTOM HOLE

LAT: 40.47298°N
LONG: 104.41162°W



SHEET 1 OF 2

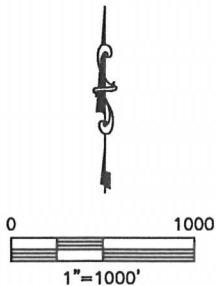
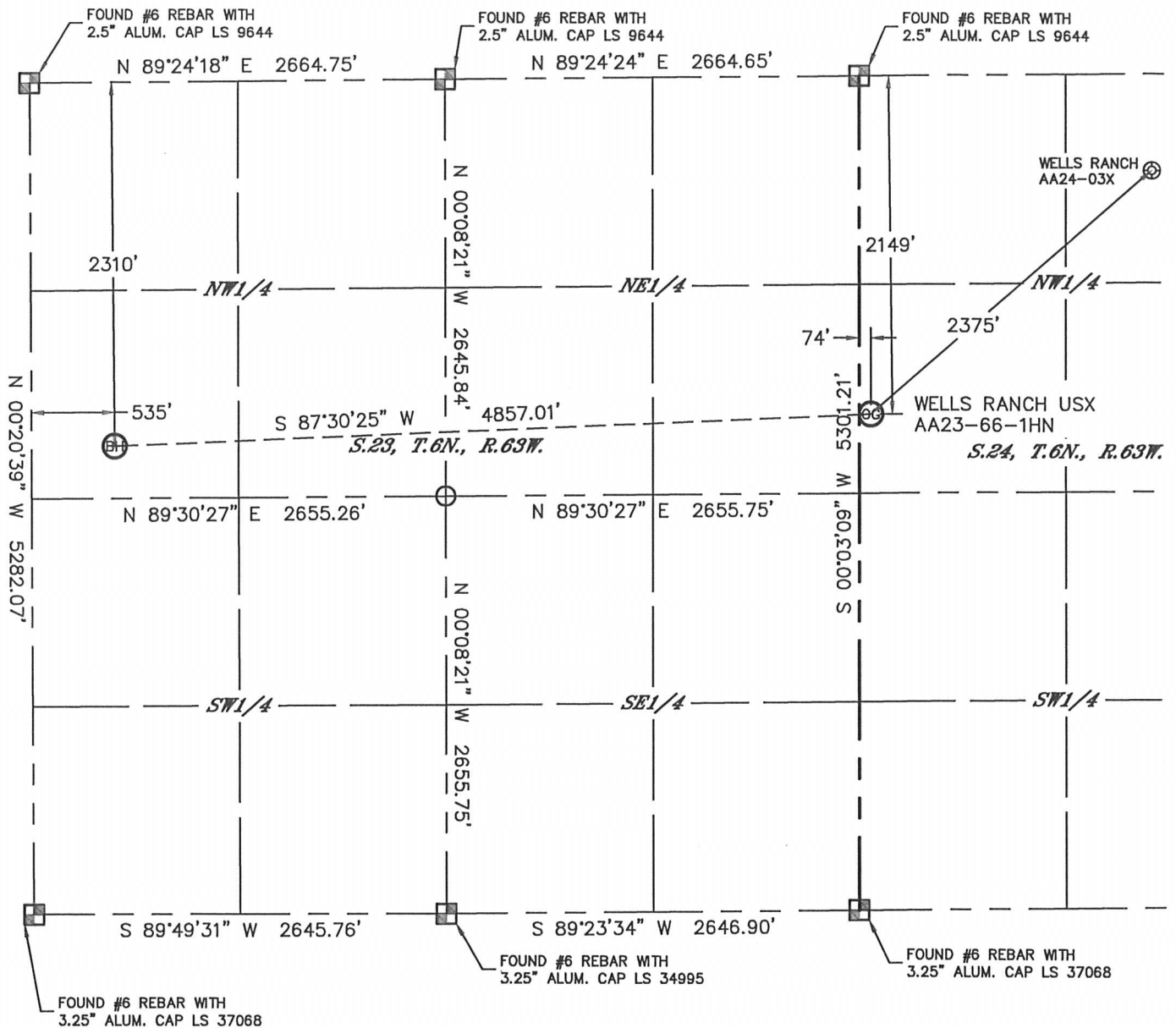
Brian T. Brinkman—On behalf of Lat40°, Inc.
Colorado Licensed Professional Surveyor
Land Surveyor No. 38175

DATE: 7/12/2012
PROJECT#: 2012094

WELL LOCATION CERTIFICATE

THIS MAP DOES NOT REPRESENT A BOUNDARY SURVEY



SECTION: 24
TOWNSHIP: 6N
RANGE: 63W



NOTE

According to Colorado law, you must commence any legal action based upon any defect in this W.L.C. within three years after you discover such defect. In no event, may any action based upon any defect in this survey be commenced more than ten years after the date of the certificate shown hereon. (13-80-105 C.R.S.)

LEGEND

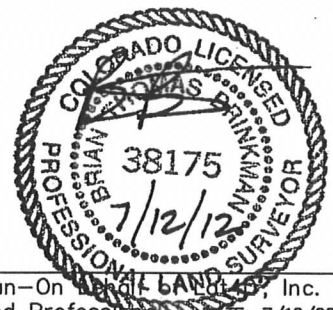
-  = ALIQUOT MONUMENT AS DESCRIBED
-  = CALCULATED POSITION

SHEET 2 OF 2

Brian T. Brinkman—On behalf of Lat40°, Inc.

Colorado Licensed Professional
Land Surveyor No. 38175

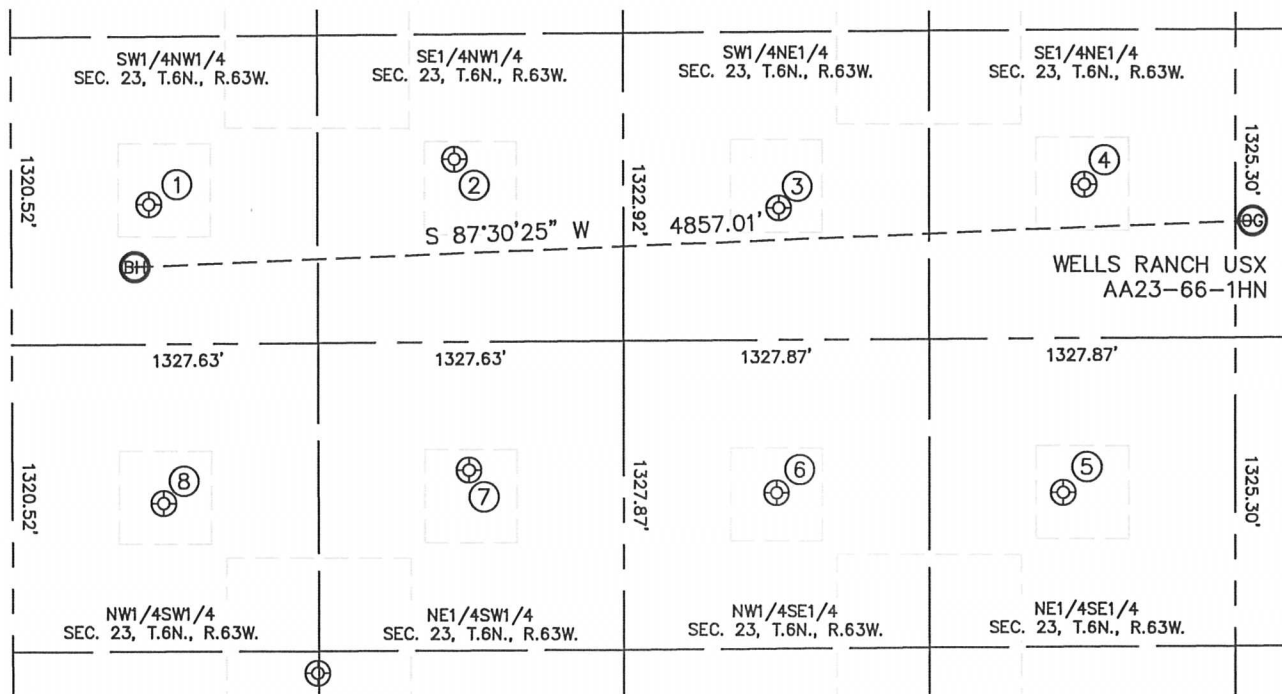
DATE: 7/12/2012
PROJECT#: 2012094



SITE SKETCH

WELLS RANCH USX AA23-66-1HN

SECTION: 24
TOWNSHIP: 6N
RANGE: 63W



①

WELLS RANCH USX
AA23-05
SW1/4NW1/4
2043' FNL
597' FWL
LAT-40.47371N
LONG-104.41140W
PDOP: 1.9
ELEV: 4783'

②

WELLS RANCH USX
AA23-06
SE1/4NW1/4
1859' FNL
1923' FWL
LAT-40.47421N
LONG-104.40663W
PDOP: 2.1
ELEV: 4764'

③

WELLS RANCH USX
AA23-07
SW1/4NE1/4
2080' FNL
1982' FEL
LAT-40.47359N
LONG-104.40157W
PDOP: 2.0
ELEV: 4790'

④

WELLS RANCH USX
AA23-08
SE1/4NE1/4
1991' FNL
655' FEL
LAT-40.47383N
LONG-104.39679W
PDOP: 2.2
ELEV: 4815'

⑤

WELLS RANCH USX
AA23-09
NE1/4SE1/4
1989' FSL
745' FEL
LAT-40.47020N
LONG-104.39718W
PDOP: 2.3
ELEV: 4816'

⑥

WELLS RANCH USX
AA23-10
NW1/4SE1/4
1998' FSL
1990' FEL
LAT-40.47023N
LONG-104.40165W
PDOP: 2.3
ELEV: 4796'

⑦

WELLS RANCH USX
AA23-11
NE1/4SW1/4
2102' FSL
1980' FWL
LAT-40.47054N
LONG-104.40645W
PDOP: 2.2
ELEV: 4800'

⑧

WELLS RANCH USX
AA23-12
NW1/4SW1/4
1961' FSL
656' FWL
LAT-40.47019N
LONG-104.41121W
PDOP: 2.4
ELEV: 4799'

