

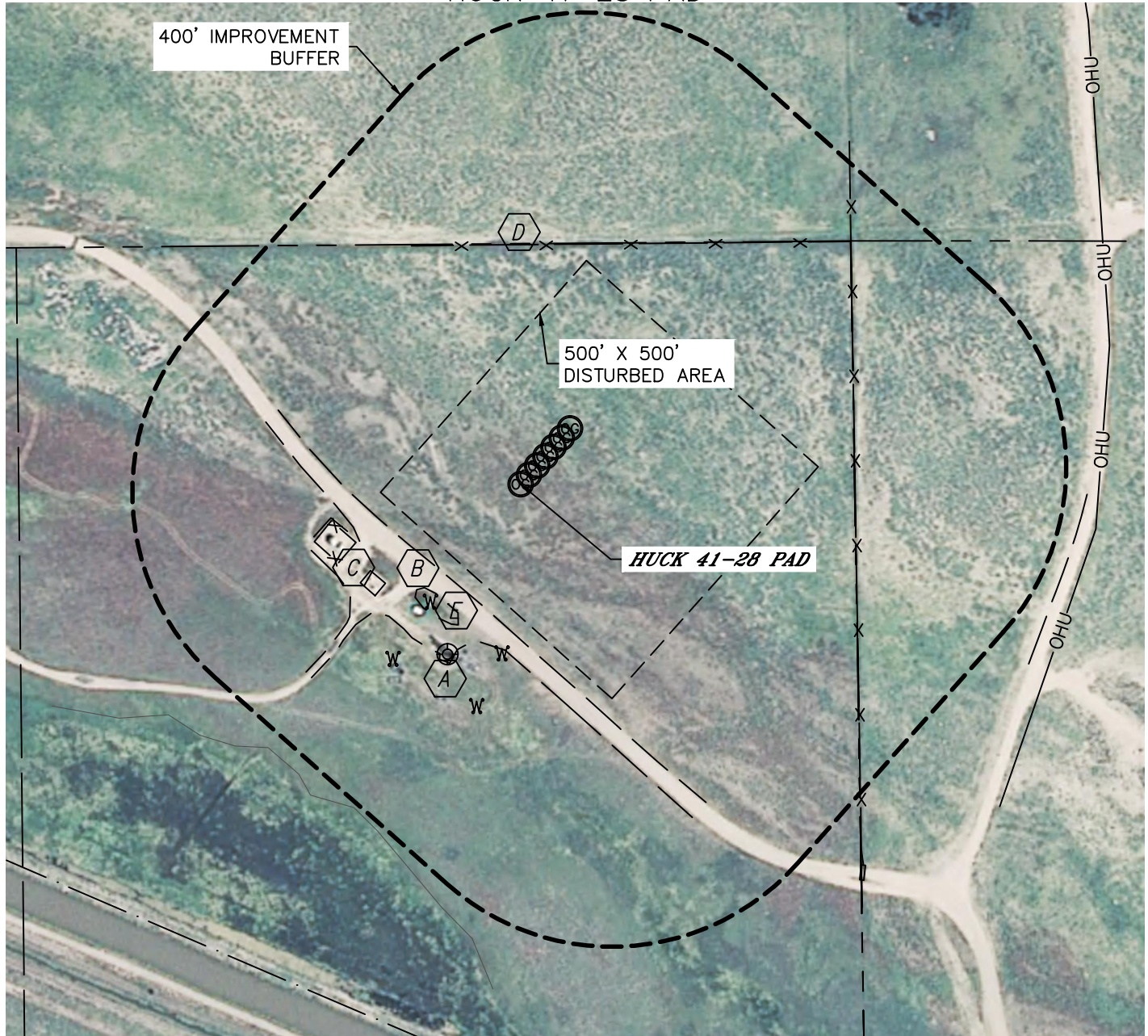


Lat40°, Inc. 1635 Foxtrail Drive, Suite 325 Loveland, CO 970-776-3321

LOCATION DRAWING

SECTION: 28
TOWNSHIP: 5N
RANGE: 63W

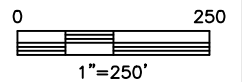
HUCK 41-28 PAD



IMPROVEMENTS:

(MEASURED FROM PROPOSED NORTH PLATTE U-Y-28HNB WELL LOCATION)

- A** EX. O&G WELL 298' SW
- B** EDGE OF GRAVEL 189' SW
- C** EX PRODUCTION FACILITIES 270' & 281' SW
- D** FENCE 386' N, 538' E
- E** DEADMAN 275' & 365' SW, 239' & 385' SW



NEAREST: BUILDING 1357' NE, PUBLIC ROAD 5280' +,
ABOVE GROUND UTILITY 900' SE, RAILROAD 5280'+, PROPERTY LINE 388' N

DATE: 12/10/2012
PROJECT#: 2012053