



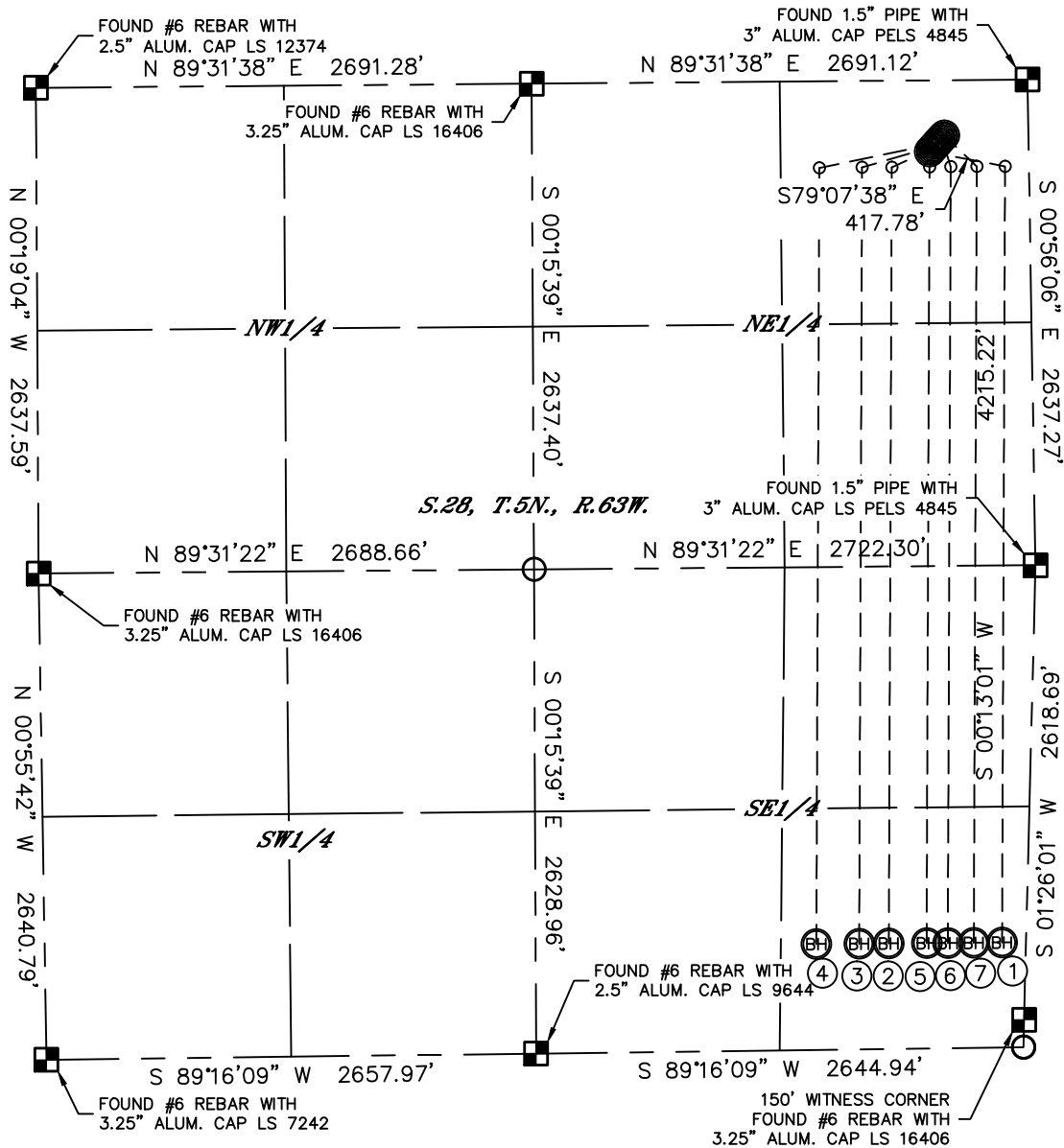
Lat40°, Inc. 1635 Foxtrail Drive, Suite 325 Loveland, CO 970-776-3321

MULTI-WELL PLAN

HUCK 41-28 PAD

THIS MAP DOES NOT REPRESENT A BOUNDARY SURVEY

SECTION: 28
TOWNSHIP: 5N
RANGE: 63W



①
—SURFACE LOCATION—
NORTH PLATTE
U-Y-28HNB
388' FNL
539' FEL
LAT: 40.37664°N
LONG: 104.43305°W

②
—SURFACE LOCATION—
NORTH PLATTE A2
373' FNL
525' FEL
LAT: 40.37668°N
LONG: 104.43300°W

③
—SURFACE LOCATION—
NORTH PLATTE A3
358' FNL
512' FEL
LAT: 40.37672°N
LONG: 104.43295°W

④
—SURFACE LOCATION—
NORTH PLATTE A4
343' FNL
498' FEL
LAT: 40.37676°N
LONG: 104.43291°W

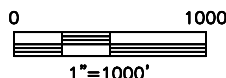
⑤
—SURFACE LOCATION—
NORTH PLATTE A5
328' FNL
485' FEL
LAT: 40.37680°N
LONG: 104.43286°W

⑥
—SURFACE LOCATION—
NORTH PLATTE A6
314' FNL
471' FEL
LAT: 40.37684°N
LONG: 104.43281°W

⑦
—SURFACE LOCATION—
NORTH PLATTE A7
299' FNL
458' FEL
LAT: 40.37688°N
LONG: 104.43276°W

LEGEND

- = ALIQUOT MONUMENT AS DESCRIBED
- = CALCULATED POSITION



DATE: 12/10/2012
PROJECT#: 2012053

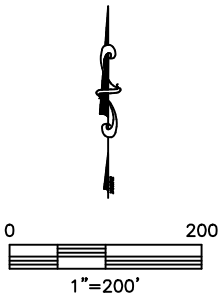
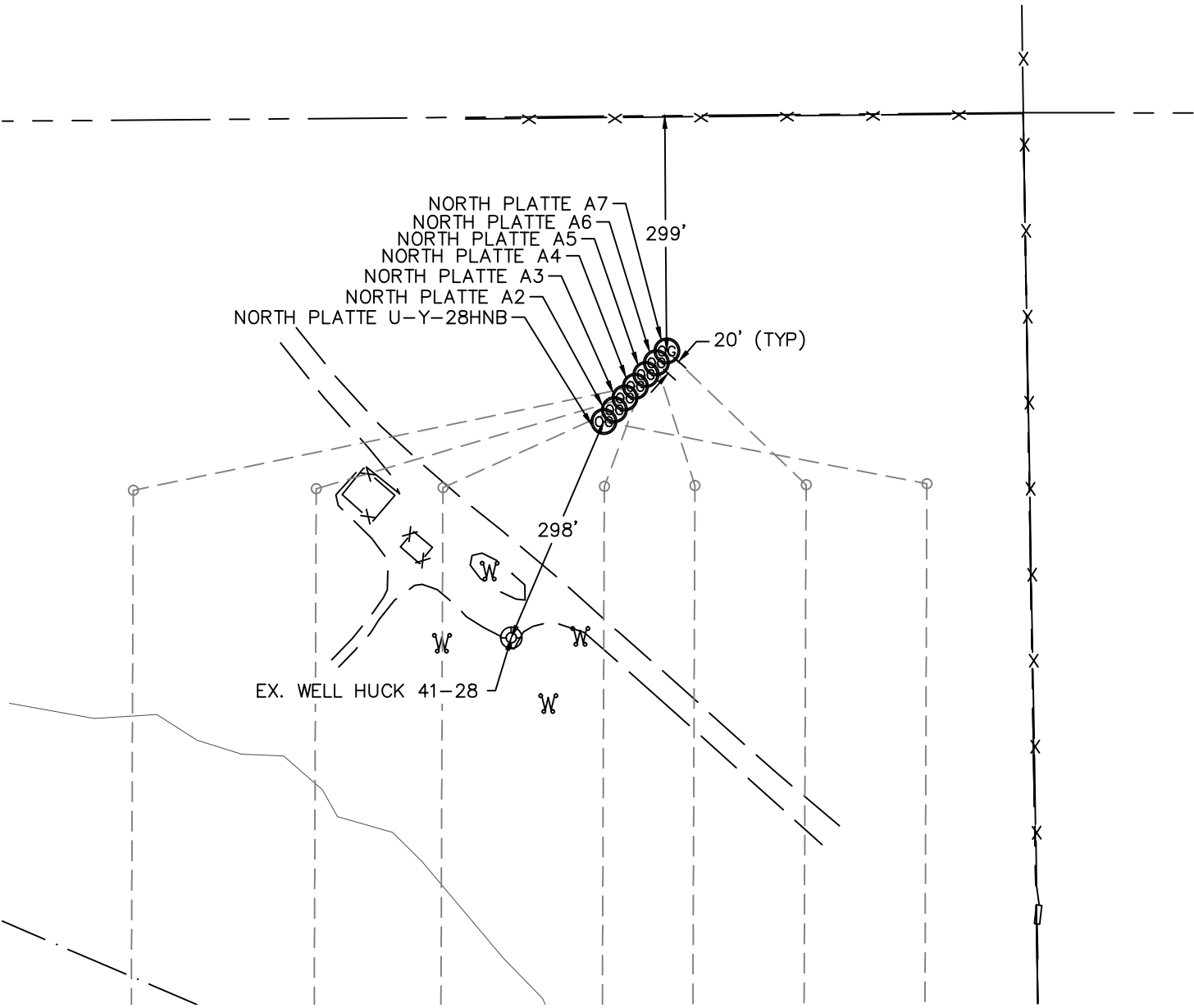


Lat40°, Inc. 1635 Foxtrail Drive, Suite 325 Loveland, CO 970-776-3321

MULTI-WELL PLAN

HUCK 41-28 PAD

SECTION: 28
TOWNSHIP: 5N
RANGE: 63W



DATE: 12/10/2012
PROJECT#: 2012053