

Nighthawk Productions, LLC

Taos 1-10
Lincoln County, CO

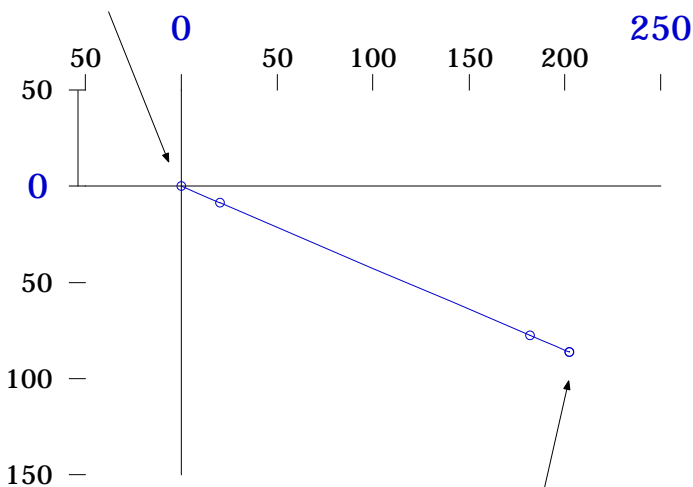
Horizontal Plan
1" = 100'



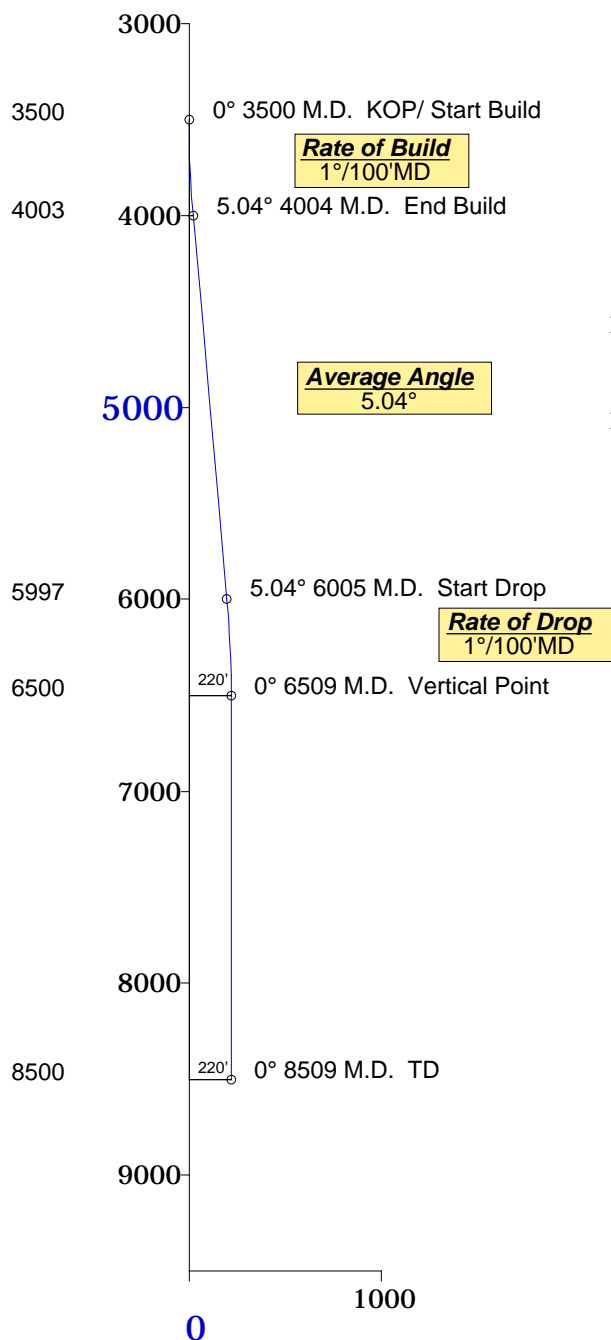
Plane of Proposal
113.14° Azimuth

Vertical Section
1" = 1000'

Surface Location
Y=1630991.8'
X=3586547.66'
NAD 83



Vertical Point
219.96' Displacement from S/L
@ 113.14° Azimuth from S/L
South-86.45' East-202.96' of S/L
TVD-6500' MD-6509'
Y=1630905.4', X=3586749.9'
TD
TVD-8500' MD-8509'



Denver, Colorado
303-463-1919

01-16-2013

Bighorn Directional, Inc.



Minimum of Curvature

Slot Location: 1630991.80', 3586547.66'

Plane of Vertical Section: 113.14°

Measured Depth Feet	BORE Inc Degrees	HOLE Direction Degrees	True Vertical Depth Feet	RECTANGULAR COORDINATES		LAMBERT COORDINATES		Vertical Section Feet	CLOSURES		Dogleg Severity Deg/100'
				North(-South) Feet	East(-West) Feet	Y Feet	X Feet		Distance Feet	Direction Deg	
KOP/ Start Build	3500.00	0.00	0.00	3500.00	0.00	0.00	1630991.8	3586547.7	0.00	0.00	0.00
	3600.00	1.00	113.14	3599.99	-0.34	0.80	1630991.5	3586548.5	0.87	0.87	113.14
	3700.00	2.00	113.14	3699.96	-1.37	3.21	1630990.4	3586550.9	3.49	3.49	113.14
	3800.00	3.00	113.14	3799.86	-3.09	7.22	1630988.7	3586554.9	7.85	7.85	113.14
	3900.00	4.00	113.14	3899.68	-5.49	12.83	1630986.3	3586560.5	13.96	13.96	113.14
	4000.00	5.00	113.14	3999.37	-8.57	20.05	1630983.2	3586567.7	21.80	21.80	113.14
	4003.58	5.04	113.14	4002.93	-8.69	20.34	1630983.1	3586568.0	22.12	22.12	113.14
End Build	4503.57	5.04	113.14	4501.00	-25.94	60.69	1630965.9	3586608.4	66.01	66.01	113.14
	5003.57	5.04	113.14	4999.07	-43.19	101.05	1630948.6	3586648.7	109.90	109.90	113.14
	5503.57	5.04	113.14	5497.14	-60.45	141.41	1630931.4	3586689.1	153.79	153.79	113.14
	6003.57	5.04	113.14	5995.21	-77.70	181.77	1630914.1	3586729.4	197.68	197.68	113.14
	6005.45	5.04	113.14	5997.07	-77.76	181.92	1630914.0	3586729.6	197.84	197.84	113.14
Start Drop	6105.45	4.04	113.14	6096.76	-80.87	189.19	1630910.9	3586736.8	205.75	205.75	113.14
	6205.45	3.04	113.14	6196.57	-83.29	194.86	1630908.5	3586742.5	211.92	211.92	113.14
	6305.45	2.04	113.14	6296.47	-85.03	198.93	1630906.8	3586746.6	216.34	216.34	113.14
	6405.45	1.04	113.14	6396.43	-86.09	201.40	1630905.7	3586749.1	219.02	219.02	113.14
	6505.45	0.04	113.14	6496.43	-86.45	202.26	1630905.4	3586749.9	219.96	219.96	113.14
	6509.02	0.00	113.14	6500.00	-86.45	202.26	1630905.4	3586749.9	219.96	219.96	113.14
Vertical Point	8509.02	0.00	113.14	8500.00	-86.45	202.26	1630905.4	3586749.9	219.96	219.96	113.14

TD
Final Station Closure Distance: 219.96' Direction: 113.14°