

# KERR-MCGEE OIL & GAS ONSHORE LP

Location: COLORADO Slot: SLOT#18 USA FED 03N-36HZ (653'FSL & 1903'FWL, SEC.36)  
Field: WELD COUNTY (KERR MCGEE) Well: USA FED 03N-36HZ  
Facility: SEC.36-T3N-R66W Wellbore: USA FED 03N-36HZ PWB

Plot reference wellpath is USA FED 03N-36HZ (PERMIT REV-B.0) PWP

True vertical depths are referenced to XTREME 6 (RKB)	Grid System: NAD83 / Lambert Colorado SP, Northern Zone (501), US feet
Measured depths are referenced to XTREME 6 (RKB)	North Reference: True north
XTREME 6 (RKB) to Mean Sea Level: 5022 feet	Scale: True distance
Mean Sea Level to Mud line (At Slot: SLOT#18 USA FED 03N-36HZ (653'FSL & 1903'FWL, SEC.36)): 0 feet	Depths are in feet
Coordinates are in feet referenced to Slot	Created by: wlsjef02 on 2/6/2013

## Location Information

Facility Name				Grid East (US ft)	Grid North (US ft)	Latitude	Longitude
SEC.36-T3N-R66W				3214305.575	1310913.744	40°11'03.516"N	104°43'58.656"W
Slot	Local N (ft)	Local E (ft)	Grid East (US ft)	Grid North (US ft)	Latitude	Longitude	
SLOT#18 USA FED 03N-36HZ (653'FSL & 1903'FWL, SEC.36)	-2862.24	1334.64	3215664.864	1308063.287	40°10'35.231"N	104°43'41.462"W	
XTREME 6 (RKB) to Mud line (At Slot: SLOT#18 USA FED 03N-36HZ (653'FSL & 1903'FWL, SEC.36))						5022ft	
Mean Sea Level to Mud line (At Slot: SLOT#18 USA FED 03N-36HZ (653'FSL & 1903'FWL, SEC.36))						0ft	
XTREME 6 (RKB) to Mean Sea Level						5022ft	

## Survey Program

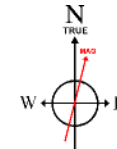
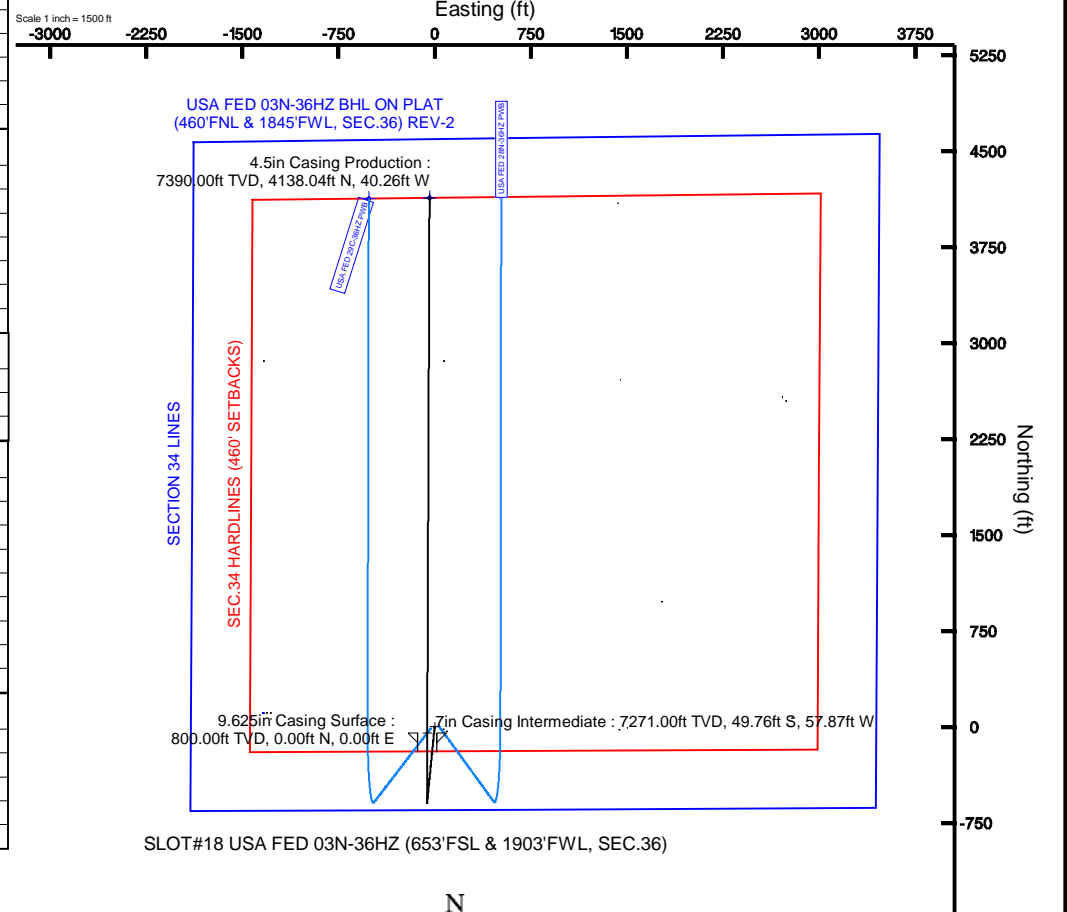
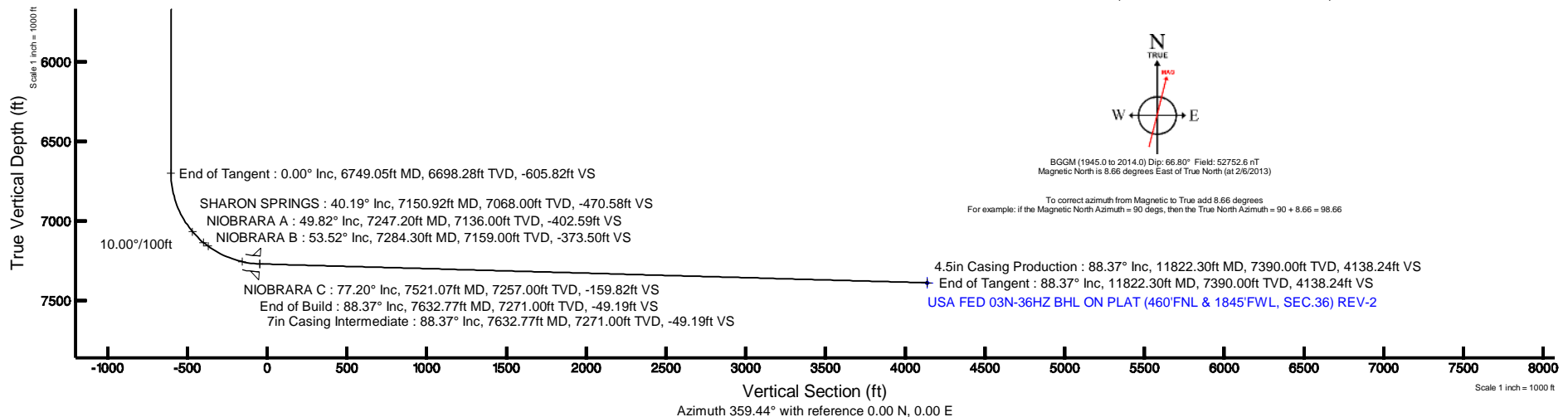
Start MD (ft)	End MD (ft)	Tool	Model	Log Name/Comment	Wellbore
17.00	7632.77	NaviTrak	NaviTrak (Standard)		USA FED 03N-36HZ PWB
7632.77	11822.30	OnTrak	OnTrak (Standard)		USA FED 03N-36HZ PWB

## Well Profile Data

Design Comment	MD (ft)	Inc (°)	Az (°)	TVD (ft)	Local N (ft)	Local E (ft)	DLS (°/100ft)	VS (ft)
Tie On	17.00	0.000	185.670	17.00	0.00	0.00	0.00	0.00
End of Tangent	1100.00	0.000	185.670	1100.00	0.00	0.00	0.00	0.00
End of Build	1600.00	10.000	185.670	1597.47	-43.31	-4.30	2.00	-43.27
End of Tangent	4608.24	10.000	185.670	4560.00	-563.13	-55.91	0.00	-562.56
End of Drop	5108.24	0.000	0.241	5057.47	-606.44	-60.21	2.00	-605.82
End of Tangent	6749.05	0.000	0.241	6698.28	-606.44	-60.21	0.00	-605.82
End of Build	7632.77	88.372	0.241	7271.00	-49.76	-57.87	10.00	-49.19
End of Tangent	11822.30	88.372	0.241	7390.00	4138.04	-40.26	0.00	4138.24

## Targets

Name	MD (ft)	TVD (ft)	Local N (ft)	Local E (ft)	Grid East (US ft)	Grid North (US ft)	Latitude	Longitude
USA FED 13-36HZ PAD SECTION LINES		-19.00	107.50	-1341.62	3214322.42	1308159.11	40°10'38.293"N	104°43'58.746"W
USA FED 03N-36HZ BHL ON PLAT (460'FNL & 1770'FWL, SEC.36) REV-1		7390.00	4137.32	-115.17	3215513.69	1312199.26	40°11'16.116"N	104°43'42.946"W
USA FED 03N-36HZ BHL ON PLAT (460'FNL & 1845'FWL, SEC.36) REV-2	11822.30	7390.00	4138.04	-40.26	3215588.59	1312200.64	40°11'16.123"N	104°43'41.981"W
USA FED 13-36HZ PAD HARDLINES (460' SETBACKS)		7421.00	107.50	-1341.62	3214322.42	1308159.11	40°10'38.293"N	104°43'58.746"W



BGGM (1945.0 to 2014.0) Dip: 66.80° Field: 52752.6 nT  
Magnetic North is 8.66 degrees East of True North (at 2/6/2013)

To correct azimuth from Magnetic to True add 8.66 degrees  
For example: if the Magnetic North Azimuth = 90 degs, then the True North Azimuth = 90 + 8.66 = 98.66



# Planned Wellpath Report

USA FED 03N-36HZ (PERMIT REV-B.0) PWP

Page 1 of 6



REFERENCE WELLPATH IDENTIFICATION			
Operator	KERR-MCGEE OIL & GAS ONSHORE LP	Slot	SLOT#18 USA FED 03N-36HZ (653'FSL & 1903'FWL, SEC.36)
Area	COLORADO	Well	USA FED 03N-36HZ
Field	WELD COUNTY (KERR MCGEE)	Wellbore	USA FED 03N-36HZ PWB
Facility	SEC.36-T3N-R66W		

REPORT SETUP INFORMATION			
Projection System	NAD83 / Lambert Colorado SP, Northern Zone (501), US feet	Software System	WellArchitect® 3.0.2
North Reference	True	User	Wilsjef02
Scale	0.999958	Report Generated	2/6/2013 at 08:40:07
Convergence at slot	0.50° East	Database/Source file	WellArchitectDB/USA_FED_03N-36HZ_PWB.xml

WELLPATH LOCATION						
	Local coordinates		Grid coordinates		Geographic coordinates	
	North[ft]	East[ft]	Easting[US ft]	Northing[US ft]	Latitude	Longitude
Slot Location	-2862.24	1334.64	3215664.86	1308063.29	40°10'35.231"N	104°43'41.462"W
Facility Reference Pt			3214305.58	1310913.74	40°11'03.516"N	104°43'58.656"W
Field Reference Pt			3197771.84	1268891.29	40°04'09.600"N	104°47'36.000"W

WELLPATH DATUM			
Calculation method	Minimum curvature	XTREME 6 (RKB) to Facility Vertical Datum	5022.00ft
Horizontal Reference Pt	Slot	XTREME 6 (RKB) to Mean Sea Level	5022.00ft
Vertical Reference Pt	XTREME 6 (RKB)	XTREME 6 (RKB) to Mud Line at Slot (SLOT#18 USA FED 03N-36HZ (653'FSL & 1903'FWL, SEC.36))	5022.00ft
MD Reference Pt	XTREME 6 (RKB)	Section Origin	N 0.00, E 0.00 ft
Field Vertical Reference	Mean Sea Level	Section Azimuth	359.44°



# Planned Wellpath Report

USA FED 03N-36HZ (PERMIT REV-B.0) PWP

Page 2 of 6



REFERENCE WELLPATH IDENTIFICATION			
Operator	KERR-MCGEE OIL & GAS ONSHORE LP	Slot	SLOT#18 USA FED 03N-36HZ (653'FSL & 1903'FWL, SEC.36)
Area	COLORADO	Well	USA FED 03N-36HZ
Field	WELD COUNTY (KERR MCGEE)	Wellbore	USA FED 03N-36HZ PWB
Facility	SEC.36-T3N-R66W		

WELLPATH DATA (133 stations) † = interpolated/extrapolated station										
MD [ft]	Inclination [°]	Azimuth [°]	TVD [ft]	Vert Sect [ft]	North [ft]	East [ft]	Latitude	Longitude	DLS [°/100ft]	Comments
0.00†	0.000	185.670	0.00	0.00	0.00	0.00	40°10'35.231"N	104°43'41.462"W	0.00	
17.00	0.000	185.670	17.00	0.00	0.00	0.00	40°10'35.231"N	104°43'41.462"W	0.00	Tie On
117.00†	0.000	185.670	117.00	0.00	0.00	0.00	40°10'35.231"N	104°43'41.462"W	0.00	
217.00†	0.000	185.670	217.00	0.00	0.00	0.00	40°10'35.231"N	104°43'41.462"W	0.00	
317.00†	0.000	185.670	317.00	0.00	0.00	0.00	40°10'35.231"N	104°43'41.462"W	0.00	
417.00†	0.000	185.670	417.00	0.00	0.00	0.00	40°10'35.231"N	104°43'41.462"W	0.00	
517.00†	0.000	185.670	517.00	0.00	0.00	0.00	40°10'35.231"N	104°43'41.462"W	0.00	
617.00†	0.000	185.670	617.00	0.00	0.00	0.00	40°10'35.231"N	104°43'41.462"W	0.00	
717.00†	0.000	185.670	717.00	0.00	0.00	0.00	40°10'35.231"N	104°43'41.462"W	0.00	
817.00†	0.000	185.670	817.00	0.00	0.00	0.00	40°10'35.231"N	104°43'41.462"W	0.00	
917.00†	0.000	185.670	917.00	0.00	0.00	0.00	40°10'35.231"N	104°43'41.462"W	0.00	
1017.00†	0.000	185.670	1017.00	0.00	0.00	0.00	40°10'35.231"N	104°43'41.462"W	0.00	
1100.00	0.000	185.670	1100.00	0.00	0.00	0.00	40°10'35.231"N	104°43'41.462"W	0.00	End of Tangent
1117.00†	0.340	185.670	1117.00	-0.05	-0.05	0.00	40°10'35.231"N	104°43'41.462"W	2.00	
1217.00†	2.340	185.670	1216.97	-2.37	-2.38	-0.24	40°10'35.208"N	104°43'41.465"W	2.00	
1317.00†	4.340	185.670	1316.79	-8.17	-8.17	-0.81	40°10'35.150"N	104°43'41.472"W	2.00	
1417.00†	6.340	185.670	1416.35	-17.42	-17.44	-1.73	40°10'35.059"N	104°43'41.484"W	2.00	
1517.00†	8.340	185.670	1515.53	-30.12	-30.15	-2.99	40°10'34.933"N	104°43'41.501"W	2.00	
1600.00	10.000	185.670	1597.47	-43.27	-43.31	-4.30	40°10'34.803"N	104°43'41.517"W	2.00	End of Build
1617.00†	10.000	185.670	1614.21	-46.20	-46.25	-4.59	40°10'34.774"N	104°43'41.521"W	0.00	
1717.00†	10.000	185.670	1712.69	-63.46	-63.53	-6.31	40°10'34.603"N	104°43'41.543"W	0.00	
1817.00†	10.000	185.670	1811.17	-80.73	-80.81	-8.02	40°10'34.432"N	104°43'41.565"W	0.00	
1917.00†	10.000	185.670	1909.65	-97.99	-98.09	-9.74	40°10'34.262"N	104°43'41.587"W	0.00	
2017.00†	10.000	185.670	2008.13	-115.25	-115.37	-11.45	40°10'34.091"N	104°43'41.610"W	0.00	
2117.00†	10.000	185.670	2106.61	-132.51	-132.65	-13.17	40°10'33.920"N	104°43'41.632"W	0.00	
2217.00†	10.000	185.670	2205.09	-149.77	-149.93	-14.89	40°10'33.749"N	104°43'41.654"W	0.00	
2317.00†	10.000	185.670	2303.57	-167.04	-167.21	-16.60	40°10'33.579"N	104°43'41.676"W	0.00	
2417.00†	10.000	185.670	2402.05	-184.30	-184.49	-18.32	40°10'33.408"N	104°43'41.698"W	0.00	
2517.00†	10.000	185.670	2500.53	-201.56	-201.77	-20.03	40°10'33.237"N	104°43'41.720"W	0.00	
2617.00†	10.000	185.670	2599.01	-218.82	-219.05	-21.75	40°10'33.066"N	104°43'41.742"W	0.00	
2717.00†	10.000	185.670	2697.50	-236.09	-236.33	-23.46	40°10'32.896"N	104°43'41.764"W	0.00	
2817.00†	10.000	185.670	2795.98	-253.35	-253.61	-25.18	40°10'32.725"N	104°43'41.786"W	0.00	
2917.00†	10.000	185.670	2894.46	-270.61	-270.89	-26.89	40°10'32.554"N	104°43'41.808"W	0.00	
3017.00†	10.000	185.670	2992.94	-287.87	-288.17	-28.61	40°10'32.383"N	104°43'41.831"W	0.00	
3117.00†	10.000	185.670	3091.42	-305.14	-305.45	-30.33	40°10'32.213"N	104°43'41.853"W	0.00	
3217.00†	10.000	185.670	3189.90	-322.40	-322.72	-32.04	40°10'32.042"N	104°43'41.875"W	0.00	
3317.00†	10.000	185.670	3288.38	-339.66	-340.00	-33.76	40°10'31.871"N	104°43'41.897"W	0.00	
3417.00†	10.000	185.670	3386.86	-356.92	-357.28	-35.47	40°10'31.700"N	104°43'41.919"W	0.00	
3517.00†	10.000	185.670	3485.34	-374.18	-374.56	-37.19	40°10'31.530"N	104°43'41.941"W	0.00	
3617.00†	10.000	185.670	3583.82	-391.45	-391.84	-38.90	40°10'31.359"N	104°43'41.963"W	0.00	
3717.00†	10.000	185.670	3682.30	-408.71	-409.12	-40.62	40°10'31.188"N	104°43'41.985"W	0.00	
3817.00†	10.000	185.670	3780.78	-425.97	-426.40	-42.34	40°10'31.017"N	104°43'42.007"W	0.00	
3917.00†	10.000	185.670	3879.26	-443.23	-443.68	-44.05	40°10'30.847"N	104°43'42.029"W	0.00	
4017.00†	10.000	185.670	3977.75	-460.50	-460.96	-45.77	40°10'30.676"N	104°43'42.052"W	0.00	
4117.00†	10.000	185.670	4076.23	-477.76	-478.24	-47.48	40°10'30.505"N	104°43'42.074"W	0.00	



# Planned Wellpath Report

USA FED 03N-36HZ (PERMIT REV-B.0) PWP

Page 3 of 6



## REFERENCE WELLPATH IDENTIFICATION

Operator	KERR-MCGEE OIL & GAS ONSHORE LP	Slot	SLOT#18 USA FED 03N-36HZ (653'FSL & 1903'FWL, SEC.36)
Area	COLORADO	Well	USA FED 03N-36HZ
Field	WELD COUNTY (KERR MCGEE)	Wellbore	USA FED 03N-36HZ PWB
Facility	SEC.36-T3N-R66W		

## WELLPATH DATA (133 stations) † = interpolated/extrapolated station

MD [ft]	Inclination [°]	Azimuth [°]	TVD [ft]	Vert Sect [ft]	North [ft]	East [ft]	Latitude	Longitude	DLS [°/100ft]	Comments
4165.51†	10.000	185.670	4124.00	-486.13	-486.63	-48.31	40°10'30.422"N	104°43'42.084"W	0.00	PARKMAN
4217.00†	10.000	185.670	4174.71	-495.02	-495.52	-49.20	40°10'30.334"N	104°43'42.096"W	0.00	
4317.00†	10.000	185.670	4273.19	-512.28	-512.80	-50.91	40°10'30.163"N	104°43'42.118"W	0.00	
4417.00†	10.000	185.670	4371.67	-529.55	-530.08	-52.63	40°10'29.993"N	104°43'42.140"W	0.00	
4517.00†	10.000	185.670	4470.15	-546.81	-547.36	-54.34	40°10'29.822"N	104°43'42.162"W	0.00	
4608.24	10.000	185.670	4560.00	-562.56	-563.13	-55.91	40°10'29.666"N	104°43'42.182"W	0.00	End of Tangent
4617.00†	9.825	185.670	4568.63	-564.06	-564.63	-56.06	40°10'29.651"N	104°43'42.184"W	2.00	
4631.57†	9.533	185.670	4583.00	-566.49	-567.07	-56.30	40°10'29.627"N	104°43'42.187"W	2.00	SUSSEX
4717.00†	7.825	185.670	4667.44	-579.31	-579.90	-57.57	40°10'29.500"N	104°43'42.204"W	2.00	
4817.00†	5.825	185.670	4766.73	-591.12	-591.72	-58.75	40°10'29.384"N	104°43'42.219"W	2.00	
4917.00†	3.825	185.670	4866.37	-599.48	-600.09	-59.58	40°10'29.301"N	104°43'42.230"W	2.00	
5017.00†	1.825	185.670	4966.24	-604.38	-604.99	-60.07	40°10'29.252"N	104°43'42.236"W	2.00	
5108.24	0.000	0.241	5057.47	-605.82	-606.44	-60.21	40°10'29.238"N	104°43'42.238"W	2.00	End of Drop
5117.00†	0.000	0.241	5066.23	-605.82	-606.44	-60.21	40°10'29.238"N	104°43'42.238"W	0.00	
5217.00†	0.000	0.241	5166.23	-605.82	-606.44	-60.21	40°10'29.238"N	104°43'42.238"W	0.00	
5317.00†	0.000	0.241	5266.23	-605.82	-606.44	-60.21	40°10'29.238"N	104°43'42.238"W	0.00	
5417.00†	0.000	0.241	5366.23	-605.82	-606.44	-60.21	40°10'29.238"N	104°43'42.238"W	0.00	
5517.00†	0.000	0.241	5466.23	-605.82	-606.44	-60.21	40°10'29.238"N	104°43'42.238"W	0.00	
5617.00†	0.000	0.241	5566.23	-605.82	-606.44	-60.21	40°10'29.238"N	104°43'42.238"W	0.00	
5717.00†	0.000	0.241	5666.23	-605.82	-606.44	-60.21	40°10'29.238"N	104°43'42.238"W	0.00	
5817.00†	0.000	0.241	5766.23	-605.82	-606.44	-60.21	40°10'29.238"N	104°43'42.238"W	0.00	
5917.00†	0.000	0.241	5866.23	-605.82	-606.44	-60.21	40°10'29.238"N	104°43'42.238"W	0.00	
6017.00†	0.000	0.241	5966.23	-605.82	-606.44	-60.21	40°10'29.238"N	104°43'42.238"W	0.00	
6117.00†	0.000	0.241	6066.23	-605.82	-606.44	-60.21	40°10'29.238"N	104°43'42.238"W	0.00	
6217.00†	0.000	0.241	6166.23	-605.82	-606.44	-60.21	40°10'29.238"N	104°43'42.238"W	0.00	
6317.00†	0.000	0.241	6266.23	-605.82	-606.44	-60.21	40°10'29.238"N	104°43'42.238"W	0.00	
6417.00†	0.000	0.241	6366.23	-605.82	-606.44	-60.21	40°10'29.238"N	104°43'42.238"W	0.00	
6517.00†	0.000	0.241	6466.23	-605.82	-606.44	-60.21	40°10'29.238"N	104°43'42.238"W	0.00	
6617.00†	0.000	0.241	6566.23	-605.82	-606.44	-60.21	40°10'29.238"N	104°43'42.238"W	0.00	
6717.00†	0.000	0.241	6666.23	-605.82	-606.44	-60.21	40°10'29.238"N	104°43'42.238"W	0.00	
6749.05	0.000	0.241	6698.28	-605.82	-606.44	-60.21	40°10'29.238"N	104°43'42.238"W	0.00	End of Tangent
6817.00†	6.795	0.241	6766.07	-601.80	-602.41	-60.19	40°10'29.278"N	104°43'42.237"W	10.00	
6917.00†	16.795	0.241	6863.83	-581.39	-582.00	-60.11	40°10'29.480"N	104°43'42.236"W	10.00	
7017.00†	26.795	0.241	6956.57	-544.31	-544.92	-59.95	40°10'29.846"N	104°43'42.234"W	10.00	
7117.00†	36.795	0.241	7041.45	-491.69	-492.29	-59.73	40°10'30.366"N	104°43'42.231"W	10.00	
7150.92†	40.188	0.241	7068.00	-470.58	-471.19	-59.64	40°10'30.575"N	104°43'42.230"W	10.00	SHARON SPRINGS
7217.00†	46.795	0.241	7115.91	-425.13	-425.73	-59.45	40°10'31.024"N	104°43'42.228"W	10.00	
7247.20†	49.816	0.241	7136.00	-402.59	-403.18	-59.36	40°10'31.247"N	104°43'42.227"W	10.00	NIOBRARA A
7284.30†	53.525	0.241	7159.00	-373.50	-374.09	-59.23	40°10'31.534"N	104°43'42.225"W	10.00	NIOBRARA B
7317.00†	56.795	0.241	7177.68	-346.66	-347.25	-59.12	40°10'31.799"N	104°43'42.224"W	10.00	
7417.00†	66.795	0.241	7224.88	-258.65	-259.24	-58.75	40°10'32.669"N	104°43'42.219"W	10.00	
7517.00†	76.795	0.241	7256.08	-163.79	-164.37	-58.35	40°10'33.607"N	104°43'42.214"W	10.00	
7521.07†	77.202	0.241	7257.00	-159.82	-160.40	-58.33	40°10'33.646"N	104°43'42.214"W	10.00	NIOBRARA C
7617.00†	86.795	0.241	7270.34	-64.95	-65.52	-57.94	40°10'34.584"N	104°43'42.208"W	10.00	
7632.77	88.372	0.241	7271.00	-49.19	-49.76	-57.87	40°10'34.739"N	104°43'42.208"W	10.00	End of Build



# Planned Wellpath Report

USA FED 03N-36HZ (PERMIT REV-B.0) PWP

Page 4 of 6



REFERENCE WELLPATH IDENTIFICATION			
Operator	KERR-MCGEE OIL & GAS ONSHORE LP	Slot	SLOT#18 USA FED 03N-36HZ (653'FSL & 1903'FWL, SEC.36)
Area	COLORADO	Well	USA FED 03N-36HZ
Field	WELD COUNTY (KERR MCGEE)	Wellbore	USA FED 03N-36HZ PWB
Facility	SEC.36-T3N-R66W		

WELLPATH DATA (133 stations) † = interpolated/extrapolated station										
MD [ft]	Inclination [°]	Azimuth [°]	TVD [ft]	Vert Sect [ft]	North [ft]	East [ft]	Latitude	Longitude	DLS [°/100ft]	Comments
7717.00†	88.372	0.241	7273.39	34.99	34.44	-57.52	40°10'35.571"N	104°43'42.203"W	0.00	
7817.00†	88.372	0.241	7276.23	134.94	134.39	-57.10	40°10'36.559"N	104°43'42.198"W	0.00	
7917.00†	88.372	0.241	7279.08	234.89	234.35	-56.68	40°10'37.547"N	104°43'42.192"W	0.00	
8017.00†	88.372	0.241	7281.92	334.84	334.31	-56.25	40°10'38.535"N	104°43'42.187"W	0.00	
8117.00†	88.372	0.241	7284.76	434.79	434.27	-55.83	40°10'39.522"N	104°43'42.181"W	0.00	
8217.00†	88.372	0.241	7287.60	534.74	534.23	-55.41	40°10'40.510"N	104°43'42.176"W	0.00	
8317.00†	88.372	0.241	7290.44	634.69	634.19	-54.99	40°10'41.498"N	104°43'42.171"W	0.00	
8417.00†	88.372	0.241	7293.28	734.64	734.15	-54.57	40°10'42.486"N	104°43'42.165"W	0.00	
8517.00†	88.372	0.241	7296.12	834.59	834.11	-54.15	40°10'43.474"N	104°43'42.160"W	0.00	
8617.00†	88.372	0.241	7298.96	934.54	934.06	-53.73	40°10'44.461"N	104°43'42.154"W	0.00	
8717.00†	88.372	0.241	7301.80	1034.49	1034.02	-53.31	40°10'45.449"N	104°43'42.149"W	0.00	
8817.00†	88.372	0.241	7304.64	1134.44	1133.98	-52.89	40°10'46.437"N	104°43'42.143"W	0.00	
8917.00†	88.372	0.241	7307.48	1234.39	1233.94	-52.47	40°10'47.425"N	104°43'42.138"W	0.00	
9017.00†	88.372	0.241	7310.32	1334.34	1333.90	-52.05	40°10'48.413"N	104°43'42.133"W	0.00	
9117.00†	88.372	0.241	7313.16	1434.29	1433.86	-51.63	40°10'49.400"N	104°43'42.127"W	0.00	
9217.00†	88.372	0.241	7316.00	1534.24	1533.82	-51.21	40°10'50.388"N	104°43'42.122"W	0.00	
9317.00†	88.372	0.241	7318.84	1634.19	1633.78	-50.79	40°10'51.376"N	104°43'42.116"W	0.00	
9417.00†	88.372	0.241	7321.68	1734.14	1733.73	-50.37	40°10'52.364"N	104°43'42.111"W	0.00	
9517.00†	88.372	0.241	7324.52	1834.09	1833.69	-49.95	40°10'53.352"N	104°43'42.106"W	0.00	
9617.00†	88.372	0.241	7327.36	1934.04	1933.65	-49.53	40°10'54.339"N	104°43'42.100"W	0.00	
9717.00†	88.372	0.241	7330.20	2033.99	2033.61	-49.11	40°10'55.327"N	104°43'42.095"W	0.00	
9817.00†	88.372	0.241	7333.04	2133.94	2133.57	-48.69	40°10'56.315"N	104°43'42.089"W	0.00	
9917.00†	88.372	0.241	7335.88	2233.89	2233.53	-48.27	40°10'57.303"N	104°43'42.084"W	0.00	
10017.00†	88.372	0.241	7338.72	2333.84	2333.49	-47.85	40°10'58.291"N	104°43'42.079"W	0.00	
10117.00†	88.372	0.241	7341.56	2433.79	2433.45	-47.43	40°10'59.278"N	104°43'42.073"W	0.00	
10217.00†	88.372	0.241	7344.40	2533.74	2533.40	-47.01	40°11'00.266"N	104°43'42.068"W	0.00	
10317.00†	88.372	0.241	7347.24	2633.69	2633.36	-46.59	40°11'01.254"N	104°43'42.062"W	0.00	
10417.00†	88.372	0.241	7350.08	2733.64	2733.32	-46.17	40°11'02.242"N	104°43'42.057"W	0.00	
10517.00†	88.372	0.241	7352.92	2833.59	2833.28	-45.75	40°11'03.230"N	104°43'42.051"W	0.00	
10617.00†	88.372	0.241	7355.77	2933.54	2933.24	-45.33	40°11'04.217"N	104°43'42.046"W	0.00	
10717.00†	88.372	0.241	7358.61	3033.49	3033.20	-44.91	40°11'05.205"N	104°43'42.041"W	0.00	
10817.00†	88.372	0.241	7361.45	3133.44	3133.16	-44.49	40°11'06.193"N	104°43'42.035"W	0.00	
10917.00†	88.372	0.241	7364.29	3233.39	3233.12	-44.07	40°11'07.181"N	104°43'42.030"W	0.00	
11017.00†	88.372	0.241	7367.13	3333.34	3333.07	-43.65	40°11'08.168"N	104°43'42.024"W	0.00	
11117.00†	88.372	0.241	7369.97	3433.29	3433.03	-43.23	40°11'09.156"N	104°43'42.019"W	0.00	
11217.00†	88.372	0.241	7372.81	3533.24	3532.99	-42.81	40°11'10.144"N	104°43'42.014"W	0.00	
11317.00†	88.372	0.241	7375.65	3633.19	3632.95	-42.39	40°11'11.132"N	104°43'42.008"W	0.00	
11417.00†	88.372	0.241	7378.49	3733.14	3732.91	-41.97	40°11'12.120"N	104°43'42.003"W	0.00	
11517.00†	88.372	0.241	7381.33	3833.09	3832.87	-41.55	40°11'13.107"N	104°43'41.997"W	0.00	
11617.00†	88.372	0.241	7384.17	3933.04	3932.83	-41.13	40°11'14.095"N	104°43'41.992"W	0.00	
11717.00†	88.372	0.241	7387.01	4032.99	4032.79	-40.71	40°11'15.083"N	104°43'41.986"W	0.00	
11817.00†	88.372	0.241	7389.85	4132.94	4132.75	-40.29	40°11'16.071"N	104°43'41.981"W	0.00	
11822.30	88.372	0.241	7390.00†	4138.24	4138.04	-40.26	40°11'16.123"N	104°43'41.981"W	0.00	End of Tangent



# Planned Wellpath Report

USA FED 03N-36HZ (PERMIT REV-B.0) PWP

Page 5 of 6



REFERENCE WELLPATH IDENTIFICATION			
Operator	KERR-MCGEE OIL & GAS ONSHORE LP	Slot	SLOT#18 USA FED 03N-36HZ (653'FSL & 1903'FWL, SEC.36)
Area	COLORADO	Well	USA FED 03N-36HZ
Field	WELD COUNTY (KERR MCGEE)	Wellbore	USA FED 03N-36HZ PWB
Facility	SEC.36-T3N-R66W		

HOLE & CASING SECTIONS - Ref Wellbore: USA FED 03N-36HZ PWB Ref Wellpath: USA FED 03N-36HZ (PERMIT REV-B.0) PWP									
String/Diameter	Start MD [ft]	End MD [ft]	Interval [ft]	Start TVD [ft]	End TVD [ft]	Start N/S [ft]	Start E/W [ft]	End N/S [ft]	End E/W [ft]
13.5in Open Hole	17.00	800.00	783.00	17.00	800.00	0.00	0.00	0.00	0.00
9.625in Casing Surface	17.00	800.00	783.00	17.00	800.00	0.00	0.00	0.00	0.00
8.75in Open Hole	800.00	7632.77	6832.77	800.00	7271.00	0.00	0.00	-49.76	-57.87
7in Casing Intermediate	17.00	7632.77	7615.77	17.00	7271.00	0.00	0.00	-49.76	-57.87
6.125in Open Hole	7632.77	11822.30	4189.53	7271.00	7390.00	-49.76	-57.87	4138.04	-40.26
4.5in Casing Production	17.00	11822.30	11805.30	17.00	7390.00	0.00	0.00	4138.04	-40.26

TARGETS									
Name	MD [ft]	TVD [ft]	North [ft]	East [ft]	Grid East [US ft]	Grid North [US ft]	Latitude	Longitude	Shape
USA FED 13-36HZ PAD SECTION LINES		-19.00	107.50	-1341.62	3214322.42	1308159.11	40°10'36.293"N	104°43'58.746"W	polygon
USA FED 03N-36HZ BHL ON PLAT (460'FNL & 1770'FWL, SEC.36) REV-1		7390.00	4137.32	-115.17	3215513.69	1312199.26	40°11'16.116"N	104°43'42.946"W	point
1) USA FED 03N-36HZ BHL ON PLAT (460'FNL & 1845'FWL, SEC.36) REV-2	11822.30	7390.00	4138.04	-40.26	3215588.59	1312200.64	40°11'16.123"N	104°43'41.981"W	point
USA FED 13-36HZ PAD HARDLINES (460' SETBACKS)		7421.00	107.50	-1341.62	3214322.42	1308159.11	40°10'36.293"N	104°43'58.746"W	polygon

SURVEY PROGRAM - Ref Wellbore: USA FED 03N-36HZ PWB Ref Wellpath: USA FED 03N-36HZ (PERMIT REV-B.0) PWP				
Start MD [ft]	End MD [ft]	Positional Uncertainty Model	Log Name/Comment	Wellbore
17.00	7632.77	NaviTrak (Standard)		USA FED 03N-36HZ PWB
7632.77	11822.30	OnTrak (Standard)		USA FED 03N-36HZ PWB



# Planned Wellpath Report

USA FED 03N-36HZ (PERMIT REV-B.0) PWP

Page 6 of 6



REFERENCE WELLPATH IDENTIFICATION			
Operator	KERR-MCGEE OIL & GAS ONSHORE LP	Slot	SLOT#18 USA FED 03N-36HZ (653'FSL & 1903'FWL, SEC.36)
Area	COLORADO	Well	USA FED 03N-36HZ
Field	WELD COUNTY (KERR MCGEE)	Wellbore	USA FED 03N-36HZ PWB
Facility	SEC.36-T3N-R66W		

WELLPATH COMMENTS				
MD [ft]	Inclination [°]	Azimuth [°]	TVD [ft]	Comment
4165.51	10.000	185.670	4124.00	PARKMAN
4631.57	9.533	185.670	4583.00	SUSSEX
7150.92	40.188	0.241	7068.00	SHARON SPRINGS
7247.20	49.816	0.241	7136.00	NIOBRARA A
7284.30	53.525	0.241	7159.00	NIOBRARA B
7521.07	77.202	0.241	7257.00	NIOBRARA C