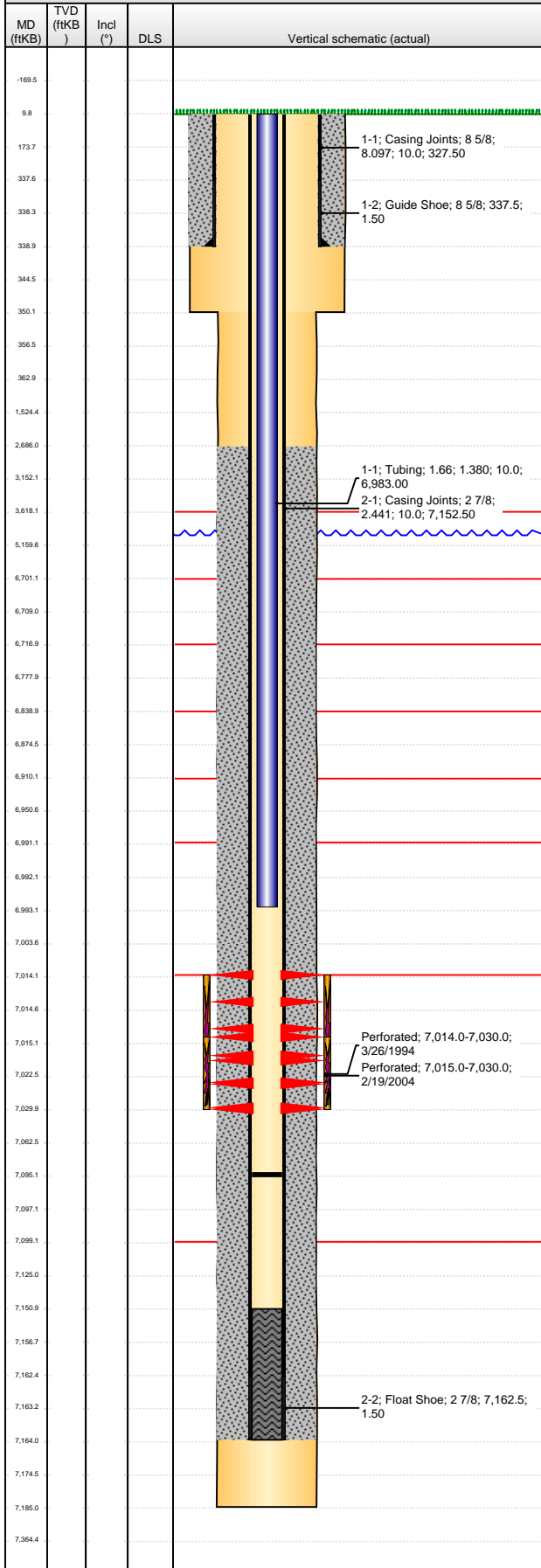


Well Name: SITZMAN E23-12

VERTICAL - ORIGINAL HOLE, 2/6/2013 9:11:32 AM



Logs	API 05-123-17854		Business Unit WATTENBERG		District 15		Well Config VERTICAL	
	Original KB Elevation (ft) 4,726.00		KB - GL / MSL (ftKB) 10.00		Spud Date 2/12/1994		P & A Date	
	Comment DISCREPANCY: DR RPT TD 7190; ST RPT TD 7185							
	Directions To Well							
	Congressional Location							
	Quarter 1	Quarter 2	Quarter 3 NW	Quarter 4 SW	Section 23	Township 6 N	Twnshp N... 65	Range W
	Bottom Hole Location							
	North-South Distance (ft)		From N or S Line		East-West Distance (ft)		From E or W Line	
	Plug Back Total Depths							
	Date	Depth (ftKB)	Method			Com		
	2/19/1994	7,161.0	CASING TALLY			FLOAT SHOE WITH BAFFLE		
3/23/1994	7,151.0	CASED HOLE LOG			DEPTH LOGGER ON CBL			
1/15/2005	7,095.0	TAG			TAGGED TO LAND TUBING			
Wellbore Sections								
Section Des			Size (in)		Act Top (ftKB)		Act Btm (ftKB)	
SURFACE			12 1/4		10.0		350.0	
PRODUCTION			7 7/8		350.0		7,185.0	
Zone Statuses								
Zone Name		Status Date	Status		Job			
CODELL		4/20/1994	PR		DRILLING/COMPLETION - ORIGINAL, 2/12/1994 00:00			
CODELL		2/27/2004	PR		RE-FRAC, 2/18/2004 00:00			
Casing Strings								
Surface, 339.0ftKB								
Casing Description Surface		Run Date 2/13/1994	OD (in) 8 5/8	Wt/Len (l... 24.00	Grade ?	Top (ftKB) 10.0	Set Depth... 339.0	
Production, 7,164.0ftKB								
Casing Description Production		Run Date 2/19/1994	OD (in) 2 7/8	Wt/Len (l... 6.50	Grade N-80	Top (ftKB) 10.0	Set Depth... 7,164.0	
Cement								
Description SURFACE CASING CEMENT				Top Depth (ftKB) 10.0		Bottom Depth (ftKB) 339.0		
Description PRODUCTION CASING CEMENT				Top Depth (ftKB) 2,686.0		Bottom Depth (ftKB) 7,164.0		
Tubing Components								
Item Des		OD (in)	Wt (lb/ft)	Grade	Jts	Len (ft)	Btm (ftKB)	Btm (TVD) (ftKB)
Tubing		1.66	2.40	J-55	210	6,983.00	6,993.0	
Perforation Data								
Zone		Bnch/St g	Entered Shot Total	Top (ftKB)		Btm (ftKB)		Date
CODELL, ORIGINAL HOLE			28	7,014.00		7,030.00		3/26/1994
CODELL, ORIGINAL HOLE			60	7,015.00		7,030.00		2/19/2004
Stimulations & Treatments								
Date 3/26/1994		Zone CODELL, ORIGINAL HOLE			Primary Job Type DRILLING/COMPLETION - ORIGINAL			
Technical Result			Tech Result Details			Tech Result Note		
Comment								
Date 2/26/2004		Zone CODELL, ORIGINAL HOLE			Primary Job Type RE-FRAC			
Technical Result			Tech Result Details			Tech Result Note		
Comment								
Other In Hole								
Run Date		Des				OD (in)	Top (ftKB)	Btm (ftKB)
Logs								
Date		Type				Top (ftKB)		Btm (ftKB)
2/18/1994		COMPENSATED DENSITY				3,200.0		7,200.0
2/18/1994		INDUCTION				3,200.0		7,200.0
3/23/1994		CEMENT BOND				2,550.0		7,144.0

Well Name: SITZMAN E23-12

VERTICAL - ORIGINAL HOLE, 2/6/2013 9:11:32 AM

VERTICAL - ORIGINAL HOLE, 2/6/2013 9:11:32 AM					Logs			
MD (ftKB)	TVD (ftKB)	Incl (°)	DLS	Vertical schematic (actual)	Logs	Date	Type	Top (ftKB)
						1/17/2011	GYRO	10.0
-169.5								6,985.0
9.8								
173.7								
337.6								
338.3								
338.9								
344.5								
350.1								
356.5								
362.9								
1,524.4								
2,686.0								
3,152.1								
3,619.1								
5,159.6								
6,701.1								
6,709.0								
6,716.9								
6,777.9								
6,838.9								
6,874.5								
6,910.1								
6,950.6								
6,991.1								
6,992.1								
6,993.1								
7,003.6								
7,014.1								
7,014.6								
7,015.1								
7,022.5								
7,029.9								
7,062.5								
7,095.1								
7,097.1								
7,099.1								
7,125.0								
7,150.9								
7,156.7								
7,162.4								
7,163.2								
7,164.0								
7,174.5								
7,185.0								
7,364.4								

1-1; Casing Joints; 8 5/8;
8.097; 10.0; 327.50

1-2; Guide Shoe; 8 5/8; 337.5;
1.50

1-1; Tubing; 1.66; 1.380; 10.0;
6,983.00
2-1; Casing Joints; 2 7/8;
2.441; 10.0; 7,152.50

Perforated; 7,014.0-7,030.0;
3/26/1994
Perforated; 7,015.0-7,030.0;
2/19/2004

2-2; Float Shoe; 2 7/8; 7,162.5;
1.50