

Noble Energy

Weld County, CO (NAD 83)

Sec. 8-T5N-R62W (Wells Ranch 8 PAD)

Wells Ranch AF08-69-1HN - A2

Design: MWD Survey

Sperry Drilling Services

Final Survey Report

17 December, 2012

Well Coordinates: 1,397,888.68 N, 3,318,691.38 E (40° 25' 11.86" N, 104° 21' 19.30" W)

Ground Level: 4,664.00 ft

Local Coordinate Origin: Centered on Well Wells Ranch AF08-69-1HN - Slot A

Viewing Datum: KB @ 4688.00ft (H&P 343)

TVDs to System: N

North Reference: Grid

Unit System: API - US Survey Feet - Custom

Geodetic Scale Factor Applied

Version: 2003.16 Build: 431

HALLIBURTON

Design Report for Wells Ranch AF08-68-1HN - MWD Survey

Measured Depth (ft)	Inclination (°)	Azimuth (°)	Vertical Depth (ft)	+N/-S (ft)	+E/-W (ft)	Vertical Section (ft)	Dogleg Rate (°/100ft)
0.00	0.00	0.00	0.00	0.00	0.00	0.00	0.00
584.00	0.00	0.00	584.00	0.00	0.00	0.00	0.00
Surface Casing Assumed Vertical at 584.00ft							
629.00	0.31	173.74	629.00	-0.12	0.01	0.02	0.69
First MWD Survey							
819.00	0.61	174.54	818.99	-1.64	0.17	0.20	0.16
914.00	0.76	185.08	913.99	-2.77	0.16	0.21	0.21
1,008.00	0.58	186.60	1,007.98	-3.86	0.05	0.13	0.19
1,103.00	0.61	177.76	1,102.98	-4.85	0.01	0.11	0.10
1,195.00	0.74	191.80	1,194.97	-5.92	-0.09	0.03	0.23
1,287.00	0.81	188.14	1,286.96	-7.14	-0.30	-0.16	0.09
1,380.00	0.75	189.30	1,379.95	-8.39	-0.49	-0.32	0.07
1,472.00	0.91	193.19	1,471.94	-9.70	-0.76	-0.56	0.18
1,656.00	0.68	189.92	1,655.92	-12.20	-1.28	-1.03	0.13
1,748.00	3.58	185.11	1,747.85	-15.60	-1.63	-1.31	3.16
1,840.00	5.54	181.75	1,839.56	-22.90	-2.02	-1.56	2.15
1,932.00	7.45	183.35	1,930.96	-33.29	-2.51	-1.83	2.09
2,025.00	9.69	174.64	2,022.92	-47.11	-2.13	-1.17	2.78
2,117.00	10.53	175.95	2,113.49	-63.20	-0.81	0.47	0.95
2,216.00	9.84	179.42	2,210.93	-80.68	-0.09	1.55	0.93
2,312.00	8.80	177.99	2,305.66	-96.22	0.26	2.20	1.11
2,406.00	10.14	182.77	2,398.38	-111.68	0.11	2.37	1.65
2,501.00	10.00	183.58	2,491.92	-128.26	-0.81	1.78	0.21
2,597.00	10.43	179.21	2,586.40	-145.27	-1.21	1.73	0.92
2,692.00	9.22	175.55	2,680.00	-161.46	-0.50	2.76	1.43
2,787.00	10.83	180.81	2,773.55	-177.97	-0.04	3.56	1.95
2,883.00	10.87	179.85	2,867.84	-196.04	-0.14	3.82	0.19
2,978.00	10.06	186.13	2,961.26	-213.25	-1.01	3.31	1.47
3,074.00	9.54	181.61	3,055.86	-229.54	-2.12	2.52	0.97
3,169.00	9.71	182.63	3,149.52	-245.41	-2.71	2.25	0.25
3,265.00	9.25	181.77	3,244.21	-261.21	-3.32	1.96	0.50
3,360.00	9.34	175.14	3,337.96	-276.52	-2.91	2.69	1.13
3,455.00	11.23	176.06	3,431.43	-293.43	-1.62	4.32	2.00
3,551.00	11.49	175.66	3,525.55	-312.29	-0.25	6.07	0.28
3,646.00	11.55	180.46	3,618.64	-331.24	0.39	7.09	1.01
3,742.00	12.27	178.65	3,712.57	-351.05	0.55	7.65	0.84
3,837.00	10.53	181.96	3,805.70	-369.82	0.49	7.97	1.96
3,933.00	10.40	185.01	3,900.10	-387.22	-0.56	7.27	0.59
4,028.00	9.12	185.13	3,993.72	-403.26	-1.99	6.17	1.35
4,124.00	9.55	180.08	4,088.45	-418.80	-2.68	5.79	0.96
4,219.00	8.73	176.60	4,182.25	-433.88	-2.26	6.52	1.04
4,314.00	10.02	183.12	4,275.98	-449.33	-2.28	6.81	1.76
4,410.00	9.68	183.70	4,370.57	-465.72	-3.26	6.16	0.37
4,506.00	8.91	182.52	4,465.30	-481.20	-4.11	5.63	0.83
4,601.00	6.38	184.47	4,559.45	-493.82	-4.84	5.15	2.68
4,696.00	4.58	193.86	4,654.02	-502.76	-6.16	4.01	2.11
4,792.00	3.15	162.99	4,749.81	-509.01	-6.31	3.99	2.58
4,887.00	0.86	125.54	4,844.74	-511.92	-4.96	5.39	2.65
4,983.00	0.64	154.76	4,940.74	-512.82	-4.15	6.23	0.45
5,079.00	0.57	113.75	5,036.73	-513.50	-3.48	6.90	0.45

Design Report for Wells Ranch AF08-68-1HN - MWD Survey

Measured Depth (ft)	Inclination (°)	Azimuth (°)	Vertical Depth (ft)	+N/-S (ft)	+E/-W (ft)	Vertical Section (ft)	Dogleg Rate (°/100ft)
5,174.00	0.29	100.82	5,131.73	-513.73	-2.81	7.58	0.31
5,269.00	1.05	145.51	5,226.72	-514.50	-2.09	8.32	0.91
5,365.00	1.75	137.65	5,322.69	-516.30	-0.60	9.84	0.75
5,460.00	1.20	358.02	5,417.68	-516.38	0.34	10.79	2.92
5,556.00	1.13	34.21	5,513.66	-514.59	0.84	11.25	0.76
5,651.00	1.18	12.29	5,608.64	-512.86	1.58	11.95	0.47
5,699.00	2.17	71.11	5,656.62	-512.09	2.54	12.90	3.87
5,746.00	8.00	80.95	5,703.42	-511.28	6.62	16.96	12.50
5,794.00	11.29	89.60	5,750.74	-510.72	14.62	24.94	7.47
5,842.00	10.86	90.30	5,797.84	-510.72	23.84	34.16	0.94
5,890.00	14.52	91.54	5,844.66	-510.90	34.38	44.70	7.65
5,937.00	19.11	87.21	5,889.64	-510.68	47.96	58.28	10.12
5,985.00	23.43	83.20	5,934.36	-509.17	65.29	75.58	9.49
6,033.00	26.71	82.72	5,977.84	-506.67	85.47	95.70	6.85
6,081.00	30.41	86.92	6,019.99	-504.65	108.31	118.50	8.77
6,129.00	34.15	90.52	6,060.57	-504.12	133.93	144.10	8.76
6,177.00	38.82	89.40	6,099.15	-504.09	162.46	172.62	9.83
6,225.00	42.97	89.74	6,135.43	-503.86	193.88	204.03	8.66
6,273.00	46.43	89.55	6,169.54	-503.64	227.64	237.78	7.21
6,320.00	50.08	88.94	6,200.83	-503.18	262.69	272.82	7.83
6,368.00	53.54	88.79	6,230.50	-502.43	300.41	310.51	7.21
6,416.00	56.71	89.85	6,257.94	-501.97	339.78	349.86	6.85
6,464.00	61.16	88.20	6,282.71	-501.26	380.87	390.94	9.73
6,512.00	66.02	86.94	6,304.05	-499.42	423.81	433.83	10.39
6,560.00	69.91	87.20	6,322.06	-497.15	468.24	478.20	8.12
6,607.00	73.23	87.85	6,336.91	-495.23	512.78	522.69	7.18
6,655.00	76.41	88.25	6,349.48	-493.65	559.07	568.94	6.67
6,702.00	80.51	88.79	6,358.88	-492.47	605.10	614.93	8.80
6,726.00	82.79	88.62	6,362.37	-491.93	628.83	638.66	9.53
6,779.00	85.65	89.78	6,367.70	-491.19	681.55	691.35	5.82
6,875.00	86.27	90.55	6,374.47	-491.47	777.31	787.10	1.03
6,970.00	88.34	88.24	6,378.93	-490.47	872.19	881.93	3.26
7,066.00	89.41	87.15	6,380.82	-486.61	968.09	977.74	1.59
7,161.00	89.91	87.13	6,381.38	-481.87	1,062.97	1,072.50	0.53
7,256.00	90.28	87.76	6,381.23	-477.63	1,157.88	1,167.30	0.77
7,351.00	90.62	87.79	6,380.48	-473.94	1,252.80	1,262.13	0.36
7,447.00	89.38	85.83	6,380.48	-468.60	1,348.65	1,357.85	2.42
7,542.00	89.44	86.22	6,381.46	-462.02	1,443.41	1,452.46	0.42
7,638.00	91.51	87.25	6,380.66	-456.55	1,539.25	1,548.17	2.41
7,733.00	90.49	87.69	6,379.00	-452.36	1,634.14	1,642.96	1.17
7,829.00	88.37	88.45	6,379.96	-449.12	1,730.07	1,738.80	2.35
7,924.00	89.26	88.02	6,381.92	-446.20	1,825.01	1,833.66	1.04
8,019.00	89.04	88.48	6,383.33	-443.30	1,919.95	1,928.53	0.54
8,115.00	90.49	89.12	6,383.73	-441.29	2,015.93	2,024.44	1.65
8,211.00	88.71	88.98	6,384.40	-439.70	2,111.91	2,120.37	1.86
8,306.00	89.85	89.44	6,385.59	-438.39	2,206.89	2,215.31	1.29
8,401.00	90.89	89.85	6,384.98	-437.80	2,301.88	2,310.27	1.18
8,497.00	91.57	87.82	6,382.92	-435.85	2,397.84	2,406.16	2.23
8,592.00	90.62	86.47	6,381.10	-431.12	2,492.70	2,500.91	1.74
8,688.00	90.71	88.13	6,379.99	-426.59	2,588.58	2,596.68	1.73
8,783.00	89.60	89.21	6,379.73	-424.39	2,683.55	2,691.59	1.63

Design Report for Wells Ranch AF08-68-1HN - MWD Survey

Measured Depth (ft)	Inclination (°)	Azimuth (°)	Vertical Depth (ft)	+N/-S (ft)	+E/-W (ft)	Vertical Section (ft)	Dogleg Rate (°/100ft)
8,879.00	89.91	88.66	6,380.14	-422.60	2,779.54	2,787.51	0.66
8,974.00	90.86	88.22	6,379.50	-420.02	2,874.50	2,882.40	1.10
9,070.00	90.22	87.51	6,378.60	-416.44	2,970.42	2,978.24	1.00
9,165.00	89.14	88.57	6,379.13	-413.19	3,065.36	3,073.10	1.59
9,261.00	90.15	88.94	6,379.72	-411.11	3,161.34	3,169.01	1.12
9,356.00	89.07	87.14	6,380.37	-407.86	3,256.28	3,263.86	2.21
9,452.00	90.06	87.46	6,381.10	-403.34	3,352.16	3,359.64	1.08
9,547.00	90.15	87.70	6,380.92	-399.32	3,447.08	3,454.45	0.27
9,642.00	87.78	87.59	6,382.64	-395.42	3,541.98	3,549.25	2.50
9,733.00	89.23	88.19	6,385.01	-392.07	3,632.88	3,640.07	1.72
9,825.00	90.55	88.75	6,385.19	-389.62	3,724.85	3,731.97	1.56
9,916.00	91.29	87.74	6,383.73	-386.83	3,815.79	3,822.83	1.38
10,007.00	90.99	86.57	6,381.92	-382.31	3,906.66	3,913.59	1.33
10,099.00	90.46	86.15	6,380.75	-376.47	3,998.47	4,005.26	0.74
10,190.00	90.12	86.57	6,380.29	-370.70	4,089.28	4,095.94	0.59
10,282.00	89.94	87.84	6,380.25	-366.21	4,181.17	4,187.72	1.39
10,374.00	89.45	89.18	6,380.74	-363.82	4,273.13	4,279.62	1.55
10,466.00	90.31	88.05	6,380.93	-361.59	4,365.10	4,371.53	1.54
10,558.00	90.59	86.93	6,380.21	-357.57	4,457.01	4,463.33	1.25
10,650.00	90.80	87.94	6,379.09	-353.45	4,548.91	4,555.13	1.12
10,745.00	89.29	88.45	6,379.02	-350.46	4,643.86	4,650.00	1.68
10,841.00	88.64	88.43	6,380.75	-347.84	4,739.81	4,745.88	0.68
10,936.00	89.60	88.66	6,382.21	-345.43	4,834.77	4,840.76	1.04
11,032.00	90.40	88.82	6,382.21	-343.32	4,930.74	4,936.68	0.85
11,128.00	89.45	88.87	6,382.33	-341.39	5,026.72	5,032.60	0.99
11,224.00	89.05	88.77	6,383.59	-339.41	5,122.69	5,128.51	0.43
11,319.00	90.62	90.12	6,383.86	-338.49	5,217.68	5,223.46	2.18
11,415.00	90.37	92.16	6,383.03	-340.40	5,313.66	5,319.45	2.14
11,510.00	89.51	93.04	6,383.13	-344.71	5,408.56	5,414.42	1.30
11,606.00	89.66	89.57	6,383.83	-346.89	5,504.51	5,510.40	3.62
11,701.00	89.75	90.85	6,384.32	-347.24	5,599.51	5,605.39	1.35
11,797.00	90.34	95.53	6,384.24	-352.58	5,695.33	5,701.30	4.91
11,892.00	90.59	95.48	6,383.47	-361.70	5,789.89	5,796.02	0.27
11,988.00	91.36	91.09	6,381.84	-367.20	5,885.70	5,891.92	4.64
12,083.00	88.74	88.43	6,381.76	-366.80	5,980.68	5,986.87	3.93
12,179.00	87.62	88.14	6,384.80	-363.93	6,076.59	6,082.70	1.21
12,274.00	88.68	86.94	6,387.87	-359.85	6,171.45	6,177.46	1.68
12,369.00	89.54	87.19	6,389.35	-354.99	6,266.31	6,272.21	0.94
12,465.00	89.97	86.05	6,389.76	-349.33	6,362.14	6,367.90	1.27
12,560.00	90.49	84.30	6,389.38	-341.34	6,456.80	6,462.38	1.92
12,656.00	90.52	84.94	6,388.53	-332.34	6,552.37	6,557.75	0.67
12,751.00	89.07	85.99	6,388.87	-324.83	6,647.07	6,652.28	1.88
12,846.00	91.11	86.26	6,388.72	-318.41	6,741.85	6,746.91	2.17
12,942.00	90.37	87.32	6,387.48	-313.03	6,837.69	6,842.62	1.35
13,037.00	88.49	86.65	6,388.43	-308.03	6,932.54	6,937.36	2.10
13,132.00	87.75	87.36	6,391.54	-303.07	7,027.36	7,032.06	1.08
13,228.00	88.30	88.10	6,394.85	-299.27	7,123.23	7,127.83	0.96
13,323.00	88.24	86.22	6,397.72	-294.57	7,218.07	7,222.55	1.98
13,418.00	90.83	87.03	6,398.49	-288.98	7,312.89	7,317.24	2.86
13,514.00	90.80	86.45	6,397.12	-283.52	7,408.72	7,412.94	0.60
13,609.00	90.74	85.82	6,395.85	-277.12	7,503.50	7,507.57	0.67

Design Report for Wells Ranch AF08-69-1HN - MWD Survey

Measured Depth (ft)	Inclination (°)	Azimuth (°)	Vertical Depth (ft)	+N/-S (ft)	+E/-W (ft)	Vertical Section (ft)	Dogleg Rate (°/100ft)
13,705.00	88.12	86.05	6,396.80	-270.31	7,599.24	7,603.16	2.74
13,800.00	90.34	86.47	6,398.08	-264.12	7,694.03	7,697.79	2.38
13,896.00	89.75	86.85	6,398.00	-258.52	7,789.86	7,793.50	0.73
13,991.00	90.86	86.80	6,397.50	-253.26	7,884.71	7,888.22	1.17
14,087.00	89.91	87.21	6,396.85	-248.24	7,980.58	7,983.97	1.08
14,182.00	89.48	86.97	6,397.36	-243.42	8,075.45	8,078.73	0.52
14,277.00	91.82	88.13	6,396.28	-239.36	8,170.35	8,173.52	2.75
14,373.00	91.73	87.12	6,393.31	-235.39	8,266.22	8,269.29	1.06
14,468.00	90.03	88.27	6,391.85	-231.57	8,361.13	8,364.10	2.16
14,564.00	88.65	88.84	6,392.95	-229.14	8,457.09	8,460.00	1.56
14,659.00	89.66	88.90	6,394.36	-227.27	8,552.06	8,554.91	1.07
14,755.00	91.20	89.20	6,393.63	-225.68	8,648.04	8,650.84	1.63
14,850.00	87.84	88.31	6,394.43	-223.62	8,743.00	8,745.74	3.66
14,945.00	88.27	88.41	6,397.65	-220.90	8,837.91	8,840.57	0.46
15,041.00	89.01	88.71	6,399.93	-218.49	8,933.85	8,936.44	0.83
15,136.00	89.29	89.93	6,401.34	-217.36	9,028.83	9,031.38	1.32
15,231.00	87.90	87.36	6,403.67	-215.11	9,123.77	9,126.25	3.07
15,327.00	88.30	86.72	6,406.86	-210.16	9,219.58	9,221.95	0.79
15,422.00	91.02	87.92	6,407.42	-205.72	9,314.47	9,316.72	3.13
15,518.00	92.41	87.02	6,404.55	-201.48	9,410.33	9,412.48	1.72
15,613.00	93.64	87.00	6,399.53	-196.54	9,505.06	9,507.10	1.29
15,665.00	93.71	86.48	6,396.20	-193.58	9,556.87	9,558.83	1.01
Final MWD Survey							
15,725.00	93.71	86.48	6,392.32	-189.91	9,616.63	9,618.51	0.00

Survey Projection to TD - Estimated BHL: 986' FNL, 537' FEL

Design Annotations

Measured Depth (ft)	Vertical Depth (ft)	Local Coordinates		Comment
		+N/-S (ft)	+E/-W (ft)	
584.00	584.00	0.00	0.00	Surface Casing Assumed Vertical at 584.00ft
629.00	629.00	-0.12	0.01	First MWD Survey
15,665.00	6,396.20	-193.58	9,556.87	Final MWD Survey
15,725.00	6,392.32	-189.91	9,616.63	Survey Projection to TD
15,725.00	6,392.32	-189.91	9,616.63	Estimated BHL: 986' FNL, 537' FEL

Vertical Section Information

Angle Type	Target	Azimuth (°)	Origin Type	Origin		Start TVD (ft)
				+N/-S (ft)	+E/-W (ft)	
Target	Wells Ranch	91.16	Slot	0.00	0.00	0.00
	AF08-69-1HN_PlanA - Rev1_B					
	HL Tgt					

Survey tool program

From (ft)	To (ft)	Survey/Plan	Survey Tool
0.00	15,725.00	Sperry MWD Surveys	MWD

Design Report for Wells Ranch AF08-68-1HN - MWD Survey

Targets

Target Name - hit/miss target - Shape	Dip Angle (°)	Dip Dir. (°)	TVD (ft)	+N/-S (ft)	+E/-W (ft)	Northing (ft)	Easting (ft)	Latitude	Longitude
Wells Ranch	0.00	0.00	6,388.00	-194.59	9,617.94	1,397,694.10	3,328,308.95	40° 25' 8.688 N	104° 19' 14.988 W
- actual wellpath misses target center by 6.50ft at 15725.00ft MD (6392.32 TVD, -189.91 N, 9616.63 E)									
- Point									
Wells Ranch	0.00	0.00	0.00	36.43	-0.47	1,397,925.11	3,318,690.91	40° 25' 12.216 N	104° 21' 19.296 W
- actual wellpath misses target center by 36.43ft at 0.00ft MD (0.00 TVD, 0.00 N, 0.00 E)									
- Polygon									
Point 1				97.53	9.43	1,397,898.11	3,318,788.91		
Point 2				4,415.53	171.43	1,398,060.10	3,323,106.74		
Point 3				4,538.53	-4,247.57	1,393,641.27	3,323,229.74		
Point 4				219.53	-4,399.57	1,393,489.28	3,318,910.90		
Point 5				97.53	9.43	1,397,898.11	3,318,788.91		
Wells Ranch	0.00	0.00	0.00	36.43	-0.47	1,397,925.11	3,318,690.91	40° 25' 12.216 N	104° 21' 19.296 W
- actual wellpath misses target center by 36.43ft at 0.00ft MD (0.00 TVD, 0.00 N, 0.00 E)									
- Polygon									
Point 1				5,335.53	171.43	1,398,060.10	3,324,026.71		
Point 2				9,676.53	350.43	1,398,239.10	3,328,367.54		
Point 3				9,769.53	-4,058.57	1,393,830.27	3,328,460.53		
Point 4				5,458.53	-4,247.57	1,393,641.27	3,324,149.70		
Point 5				5,335.53	171.43	1,398,060.10	3,324,026.71		
Wells Ranch	0.00	0.00	0.00	36.43	-0.47	1,397,925.11	3,318,690.91	40° 25' 12.216 N	104° 21' 19.296 W
- actual wellpath misses target center by 36.43ft at 0.00ft MD (0.00 TVD, 0.00 N, 0.00 E)									
- Polygon									
Point 1				4,875.53	631.43	1,398,520.09	3,323,566.72		
Point 2				10,136.53	810.43	1,398,699.08	3,328,827.52		
Point 3				10,229.53	-4,518.57	1,393,370.29	3,328,920.52		
Point 4				4,998.53	-4,707.57	1,393,181.29	3,323,689.72		
Point 5				4,875.53	631.43	1,398,520.09	3,323,566.72		
Wells Ranch	0.00	0.00	0.00	36.43	-0.47	1,397,925.11	3,318,690.91	40° 25' 12.216 N	104° 21' 19.296 W
- actual wellpath misses target center by 36.43ft at 0.00ft MD (0.00 TVD, 0.00 N, 0.00 E)									
- Polygon									
Point 1				-362.47	469.43	1,398,358.09	3,318,328.93		
Point 2				4,875.53	631.43	1,398,520.09	3,323,566.72		
Point 3				4,998.53	-4,707.57	1,393,181.29	3,323,689.72		
Point 4				-240.47	-4,859.57	1,393,029.30	3,318,450.92		
Point 5				-362.47	469.43	1,398,358.09	3,318,328.93		

**North Reference Sheet for Sec. 8-T5N-R62W (Wells Ranch 8 PAD) - Wells Ranch
AF08-68-1HN**

All data is in US Feet unless otherwise stated. Directions and Coordinates are relative to Grid North Reference.

Vertical Depths are relative to KB @ 4688.00ft (H&P 343). Northing and Easting are relative to Wells Ranch AF08-69-1HN - Slot A2

Coordinate System is US State Plane 1983, Colorado Northern Zone using datum North American Datum 1983, ellipsoid GRS 1980

Projection method is Lambert Conformal Conic (2 parallel)

Central Meridian is 105° 30' 0.000 W°, Longitude Origin: 0° 0' 0.000 E°, Latitude Origin: 40° 47' 0.000 N°

False Easting: 3,000,000.00ft, False Northing: 1,000,000.00ft, Scale Reduction: 0.99996120

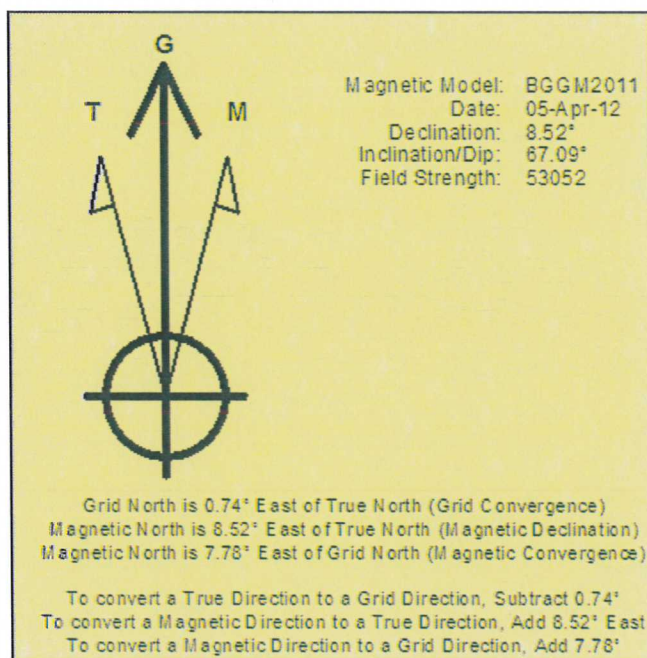
Grid Coordinates of Well: 1,397,888.68 ft N, 3,318,691.38 ft E

Geographical Coordinates of Well: 40° 25' 11.86" N, 104° 21' 19.30" W

Grid Convergence at Surface is: 0.74°

Based upon Minimum Curvature type calculations, at a Measured Depth of 15,725.00ft
the Bottom Hole Displacement is 9,618.51ft in the Direction of 91.13° (Grid).

Magnetic Convergence at surface is: -7.78° (5 April 2012, , BGGM2011)

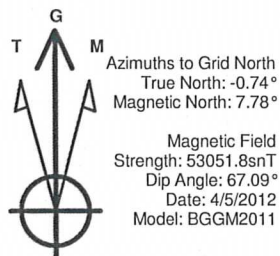


Project: Weld County, CO (NAD 83)
 Site: Sec. 8-T5N-R62W (Wells Ranch 8 PAD)
 Well: Wells Ranch AF08-69-1HN

Noble Energy

HALLIBURTON

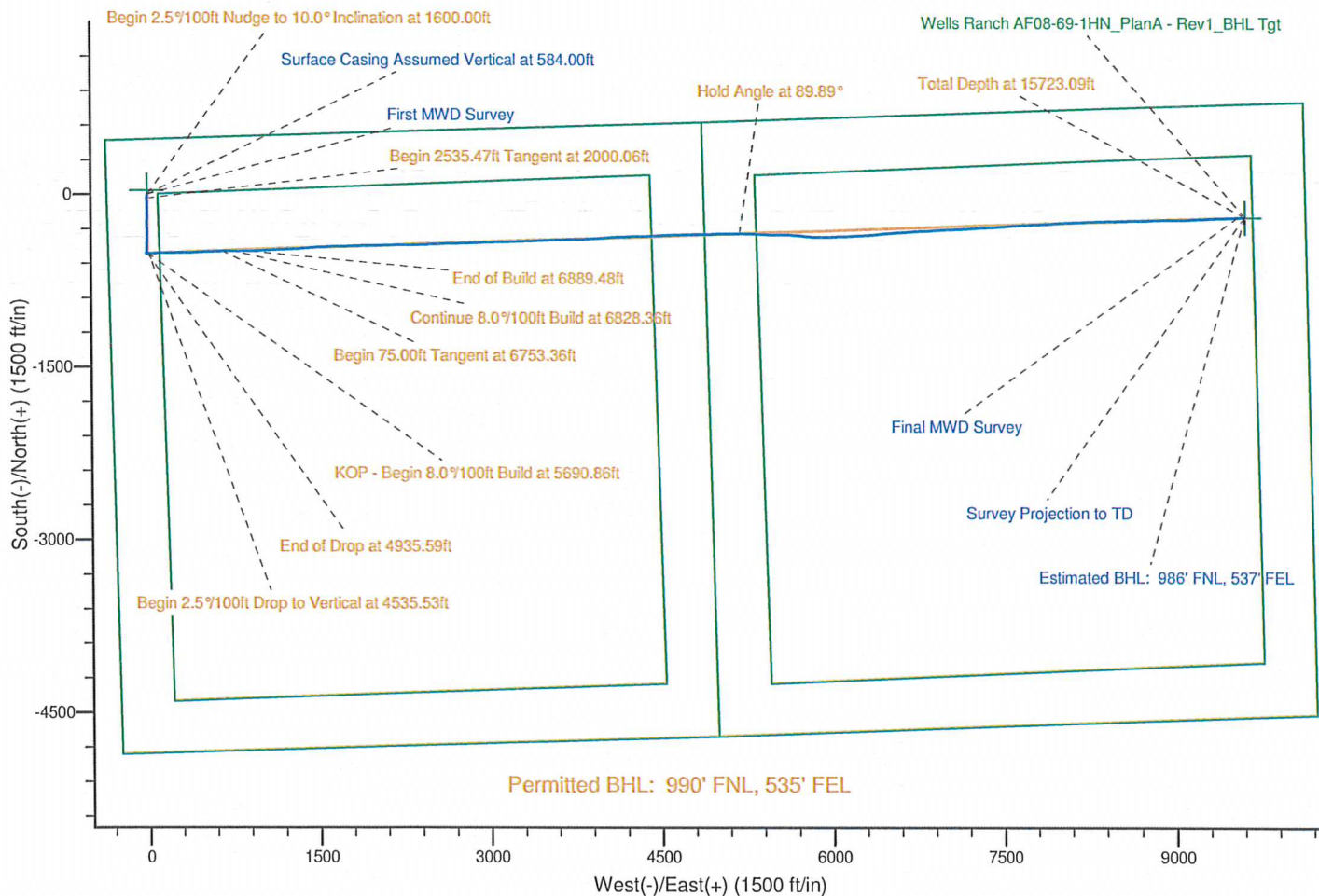
Sperry Drilling



LEGEND

- Wells Ranch AF08-69-1HN, Plan A, Plan A - Rev 1 Proposal V0
- MWD Survey

Halliburton Energy Services, Inc. ("Halliburton") recently completed directional drilling and MWD operations at the Wells Ranch AF08-69-1HN well located at Weld County, CO. At the conclusion of the job Halliburton performed a final survey on the well. Noble Energy has requested that Halliburton provide them the distances from BHL to section lines from that final survey to allow Noble Energy to meet its requirements under Colorado law. These distances are generated by a mathematical algorithm based on rough data collected after the well is drilled. Halliburton considers it to be a rough estimate only and it is not to be relied upon in any application where accurate data is required. In consideration for Halliburton releasing this data to Noble Energy, Noble Energy agrees to release Halliburton from any consequences of it or anyone else relying on such data.



Project: Weld County, CO (NAD 83)
 Site: Sec. 8-T5N-R62W (Wells Ranch 8 PAD)
 Well: Wells Ranch AF08-69-1HN

Noble Energy

HALLIBURTON

Sperry Drilling



Azimuths to Grid North
 True North: -0.74°
 Magnetic North: 7.78°

Magnetic Field
 Strength: 53051.8snT
 Dip Angle: 67.09°
 Date: 4/5/2012
 Model: BGGM2011

LEGEND

- Wells Ranch AF08-69-1HN, Plan A, Plan A - Rev 1 Proposal V0
- MWD Survey

Halliburton Energy Services, Inc. ("Halliburton") recently completed directional drilling and MWD operations at the Wells Ranch AF08-69-1HN well located at Weld County, CO. At the conclusion of the job Halliburton performed a final survey on the well. Noble Energy has requested that Halliburton provide them the distances from BHL to section lines from that final survey to allow Noble Energy to meet its requirements under Colorado law. These distances are generated by a mathematical algorithm based on rough data collected after the well is drilled. Halliburton considers it to be a rough estimate only and it is not to be relied upon in any application where accurate data is required. In consideration for Halliburton releasing this data to Noble Energy, Noble Energy agrees to release Halliburton from any consequences of it or anyone else relying on such data.

