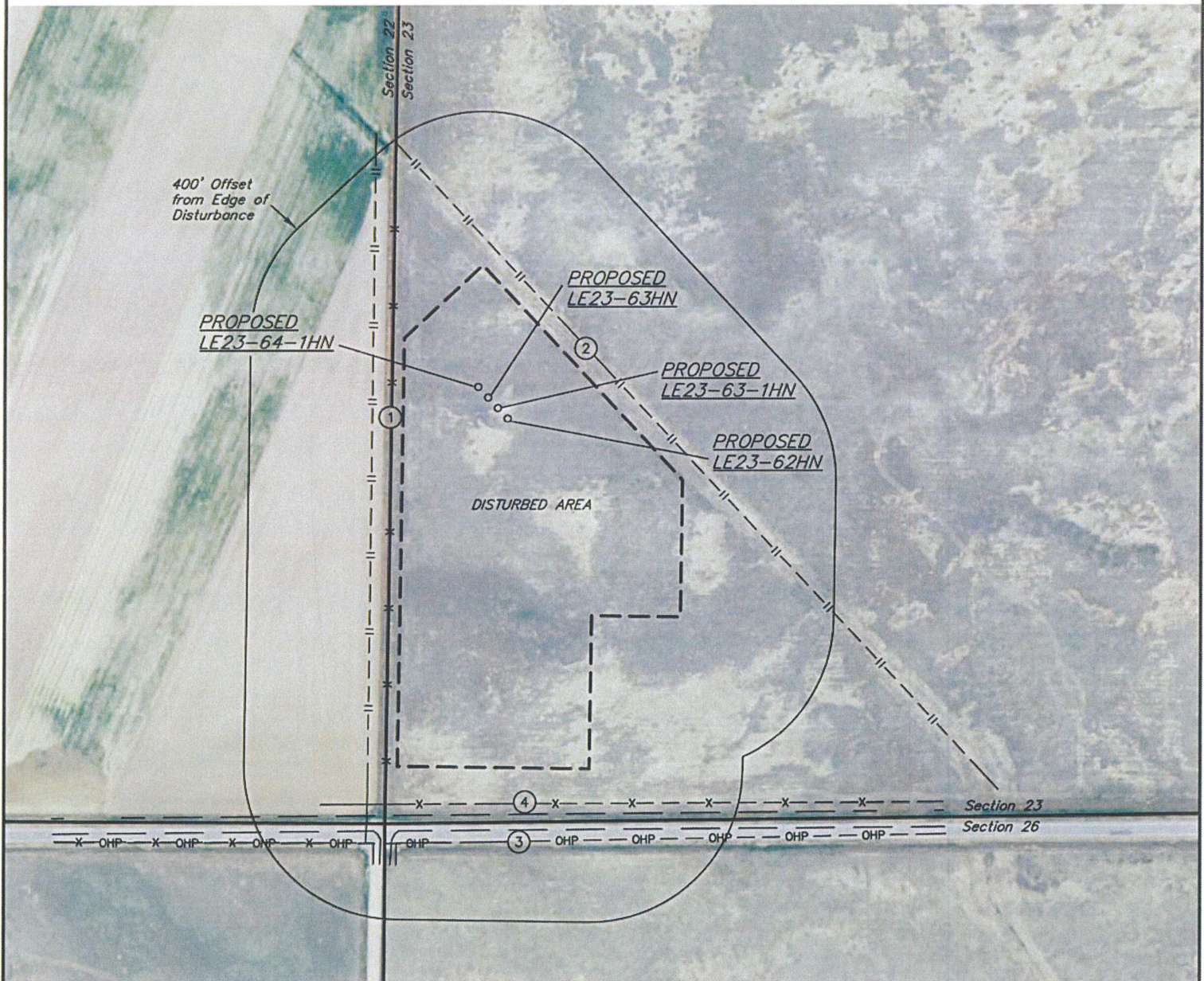


NOBLE ENERGY, INC.

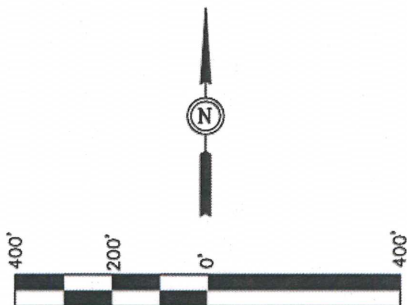
LOCATION DRAWING

KUMMER PC LE23-64-1HN, LE23-63HN,
LE23-63-1HN & LE23-62HN
SECTION 23, T8N, R61W, 6th P.M.

DATE: 09-12-12
DRAWN BY: S.R.L.
REVISED: 10-05-12



NOTE:
DIRECTION AND DISTANCE TO IMPROVEMENTS AND NEAREST FEATURES ARE FROM PROPOSED KUMMER PC LE23-62HN.



IMPROVEMENTS:

- ① FENCE 302' W, 1006' S
- ② GAS LINE 276' NE, 353' W
- ③ POWER LINE 1105' S
- ④ ROAD 1034' S

PAD DETAILS:
WELL HEAD SPACING = 37.5'

NEAREST FEATURE: BUILDING 2690' W, PUBLIC ROAD
1034' S (HWY 14), ABOVE GROUND UTILITY 1105' S,
RAILROAD 5280' +, PROPERTY LINE 303' W

UINTAH ENGINEERING & LAND SURVEYING
85 So. 200 East * Vernal, Utah 84078 * (435) 789-1017