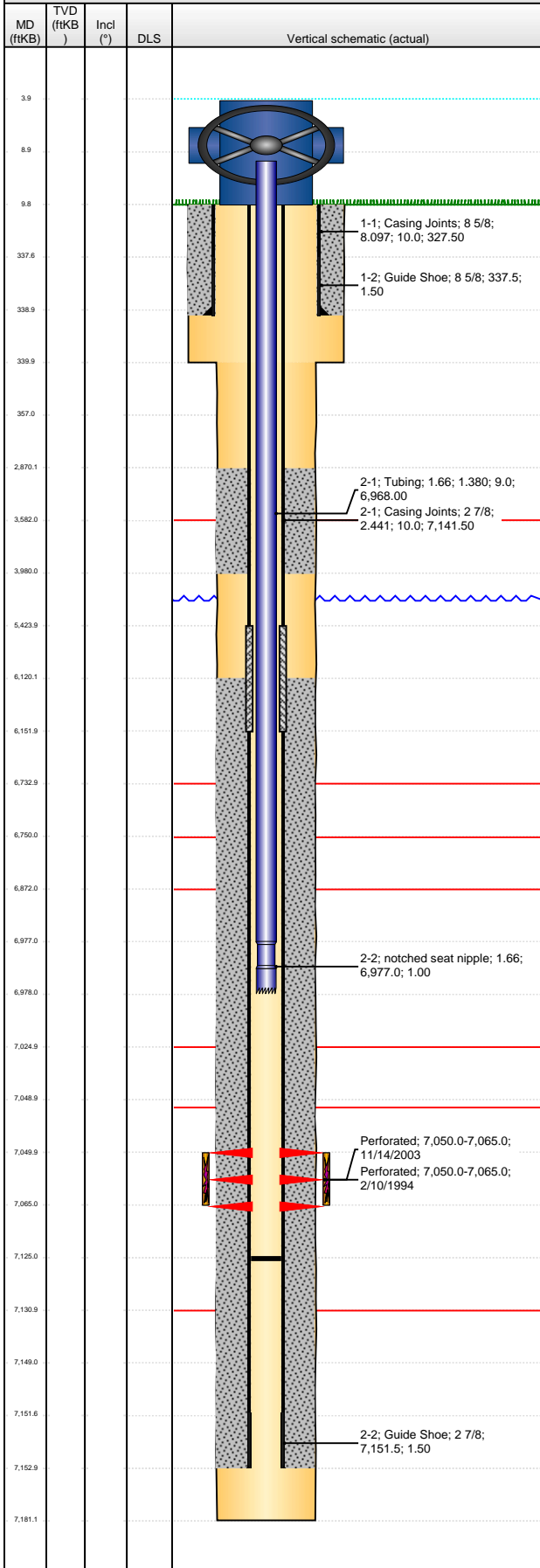


Well Name: FEIT E23-03

VERTICAL - ORIGINAL HOLE, 2/5/2013 2:17:32 PM



Well Header

API	Business Unit	District	Well Config
05-123-17727	WATTENBERG	15	VERTICAL
Original KB Elevation (ft)	KB - GL / MSL (ftKB)	Spud Date	P & A Date
4,714.00	10.00	2/2/1994	

Comment

CSG REPAIR 5/03 BTWN 5461'-6151' w/25 SKS CMNT

Directions To Well

WCR 66 AND WCR 47, N 1/2, W 2/10 TO BATTERY, N 3/10, W 2/10, N 1/10, W-INTO

Congressional Location

Quarter 1	Quarter 2	Quarter 3	Quarter 4	Section	Township	Twnshp N...	Range	Rng E/W Dir
		NE	NW	23	6	N	65	W

Bottom Hole Location

North-South Distance (ft)	From N or S Line	East-West Distance (ft)	From E or W Line

Plug Back Total Depths

Date	Depth (ftKB)	Method	Com
2/6/1994	7,149.0	TAG	
2/10/1994	7,099.0	CASED HOLE LOG	DEPTH LOGGER ON CBL
12/6/2003	7,125.0	TAG	C/O & LANDED TBG

Wellbore Sections

Section Des	Size (in)	Act Top (ftKB)	Act Btm (ftKB)
SURFACE	12 1/4	10.0	340.0
PRODUCTION	7 7/8	340.0	7,181.0

Zone Statuses

Zone Name	Status Date	Status	Job
CODELL	4/7/1994	PR	DRILLING/COMPLETION - ORIGINAL, 2/2/1994 00:00
CODELL	1/8/2004	PR	RE-FRAC, 11/13/2003 00:00

Casing Strings

Surface, 339.0ftKB

Casing Description	Run Date	OD (in)	Wt/Len (l...)	Grade	Top (ftKB)	Set Depth...
Surface	2/2/1994	8 5/8	24.00	J-55	10.0	339.0

Production, 7,153.0ftKB

Casing Description	Run Date	OD (in)	Wt/Len (l...)	Grade	Top (ftKB)	Set Depth...
Production	2/6/1994	2 7/8	6.50	N-80	10.0	7,153.0

Cement

Description	Top Depth (ftKB)	Bottom Depth (ftKB)
SURFACE CASING CEMENT	10.0	339.0
Description	Top Depth (ftKB)	Bottom Depth (ftKB)
PRODUCTION CASING CEMENT	2,870.0	3,980.0
Description	Top Depth (ftKB)	Bottom Depth (ftKB)
PRODUCTION CASING CEMENT	6,120.0	7,153.0
Description	Top Depth (ftKB)	Bottom Depth (ftKB)
CASING REPAIR - CEMENT SQUEEZE	5,424.0	6,152.0

Tubing Components

Item Des	OD (in)	Wt (lb/ft)	Grade	Jts	Len (ft)	Btm (ftKB)	Btm (TVD) (ftKB)
Tubing	1.66	2.30	J-55	211	6,968.00	6,977.0	
notched seat nipple	1.66		J-55	1	1.00	6,978.0	

Perforation Data

Zone	Bnch/St g	Entered Shot Total	Top (ftKB)	Btm (ftKB)	Date
CODELL, ORIGINAL HOLE		45	7,050.00	7,065.00	2/10/1994
CODELL, ORIGINAL HOLE		60	7,050.00	7,065.00	11/14/2003

Stimulations & Treatments

Date	Zone	Primary Job Type
2/11/1994	CODELL, ORIGINAL HOLE	DRILLING/COMPLETION - ORIGINAL
Technical Result	Tech Result Details	Tech Result Note

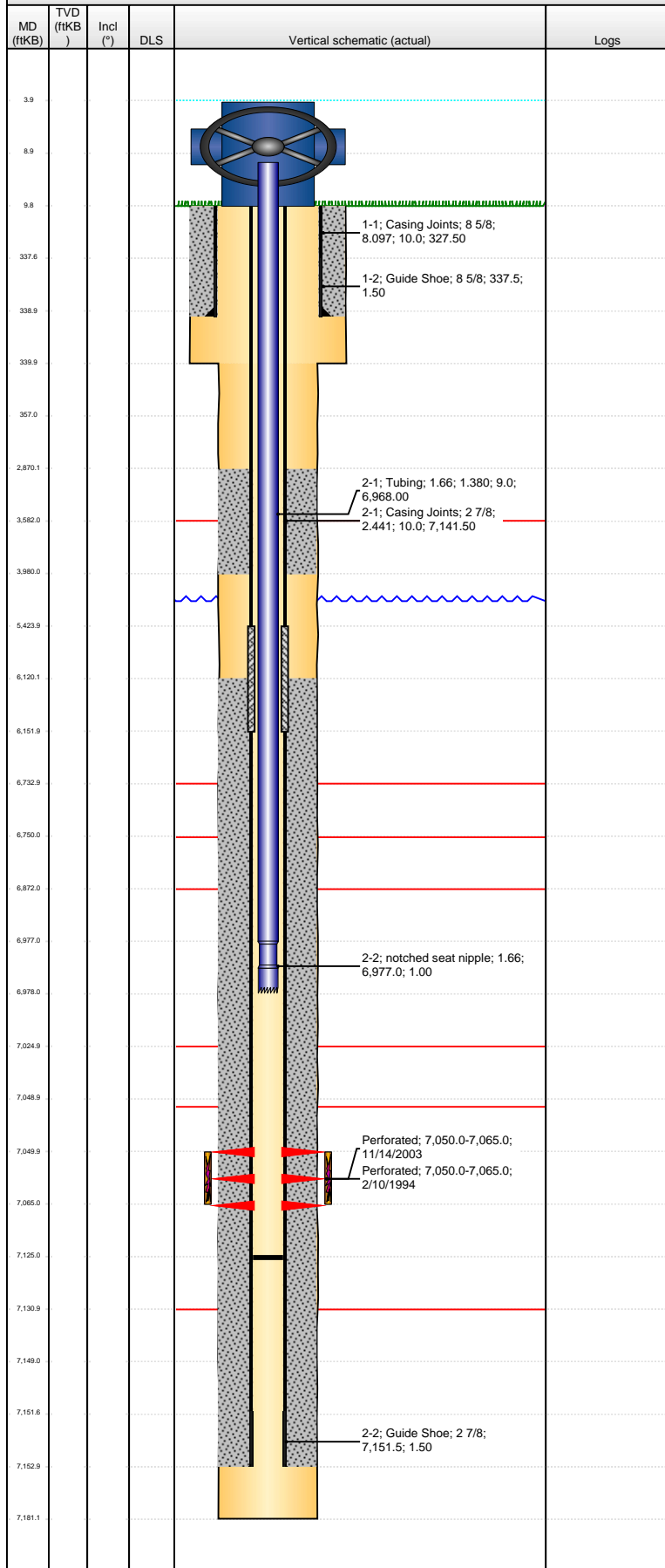
Comment

Date	Zone	Primary Job Type
11/20/2003	CODELL, ORIGINAL HOLE	RE-FRAC
Technical Result	Tech Result Details	Tech Result Note

Comment

Well Name: FEIT E23-03

VERTICAL - ORIGINAL HOLE, 2/5/2013 2:17:32 PM



Other In Hole				
Run Date	Des	OD (in)	Top (ftKB)	Btm (ftKB)
Logs				
Date	Type	Top (ftKB)	Btm (ftKB)	
2/7/1994	COMPENSATED DENSITY	3,100.0	7,170.0	
2/7/1994	INDUCTION	3,100.0	7,170.0	
2/10/1994	CEMENT BOND	2,600.0	7,092.0	
1/11/2011	GYRO	10.0	7,170.0	