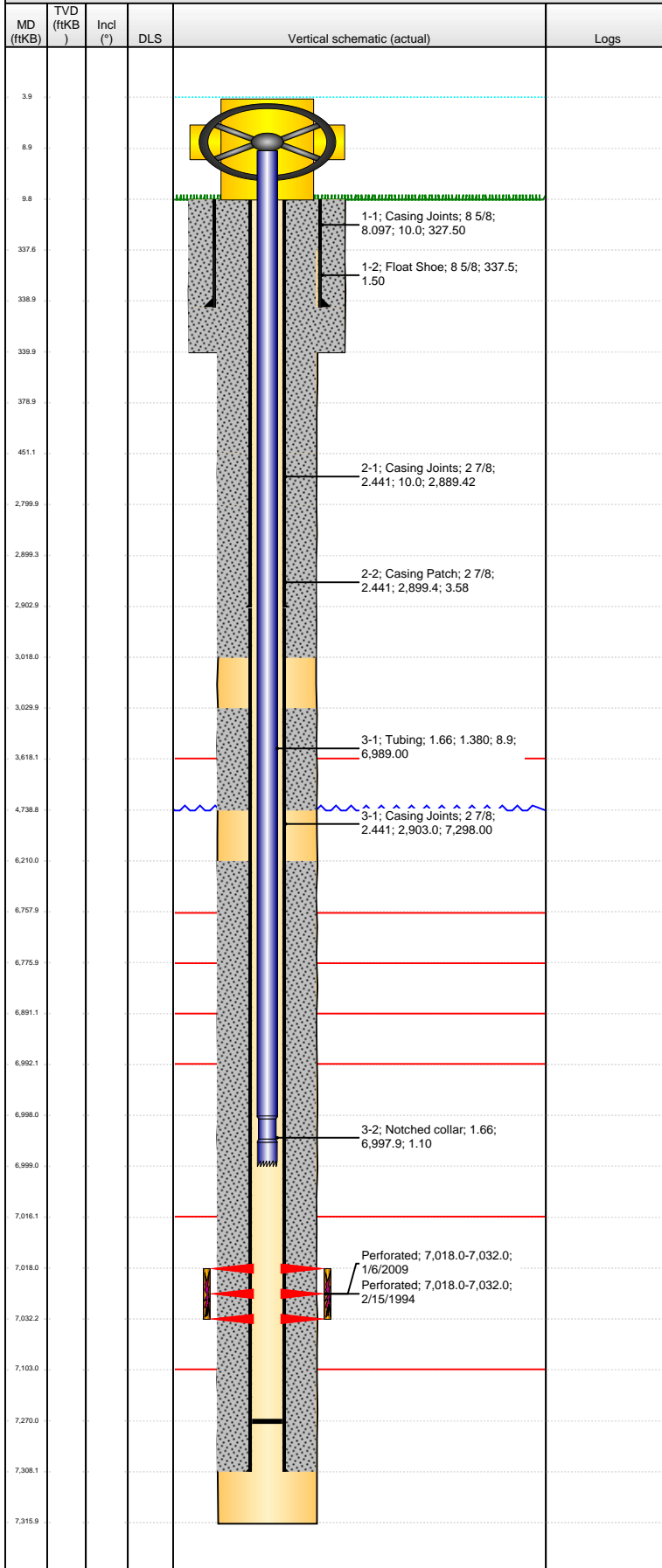


Well Name: FEIT E23-05

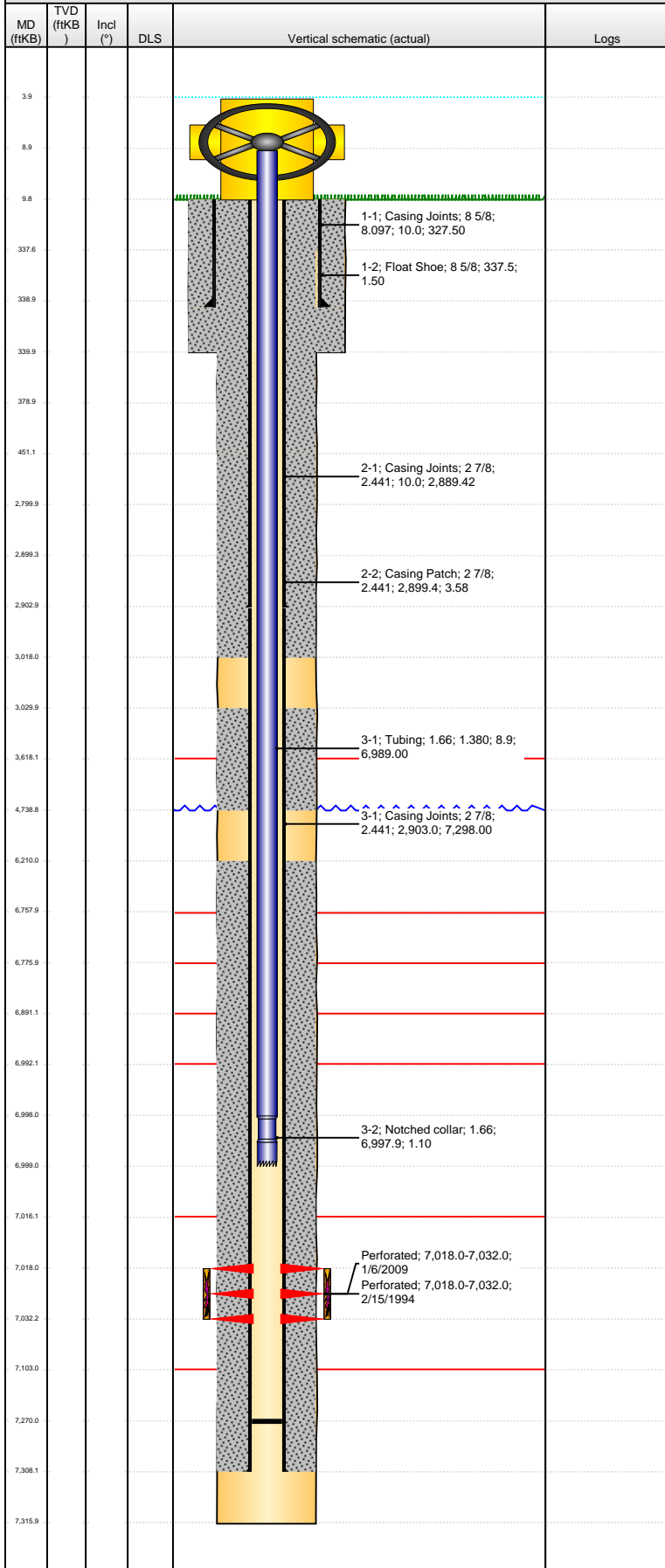
VERTICAL - ORIGINAL HOLE, 2/5/2013 11:30:41 AM



Well Header									
API 05-123-17728		Business Unit WATTENBERG			District 15		Well Config VERTICAL		
Original KB Elevation (ft) 4,738.00		KB - GL / MSL (ftKB) 10.00			Spud Date 2/8/1994		P & A Date		
Comment									
Directions To Well HWY 392/ RD 47 - S.5, W.25, N.15, W.3, 75 TDS TO PASTURE, NW.2, S/SE.15, W.1 INTO.									
Congressional Location									
Quarter 1	Quarter 2	Quarter 3 SW	Quarter 4 NW	Section 23	Township 6	Twnshp N... N	Range 65	Rng E/W Dir W	
Bottom Hole Location									
North-South Distance (ft)			From N or S Line		East-West Distance (ft)			From E or W Line	
Plug Back Total Depths									
Date	Depth (ftKB)		Method			Com			
2/12/1994	7,290.0		TAG			ROLL CLEAN WITH 231' OF RAT HOLE.			
1/5/2009	7,263.0		TAG						
1/20/2009	7,270.0		SLICKLINE TAG						
Wellbore Sections									
Section Des			Size (in)		Act Top (ftKB)		Act Btm (ftKB)		
SURFACE			12 1/4		10.0		340.0		
PRODUCTION			7 7/8		340.0		7,316.0		
Zone Statuses									
Zone Name		Status Date		Status		Job			
CODELL		4/4/1994		PR		DRILLING/COMPLETION - ORIGINAL, 2/8/1994 00:00			
CODELL		2/23/2009		PR		RE-FRAC, 12/16/2008 14:00			
Casing Strings									
Surface, 339.0ftKB									
Casing Description		Run Date		OD (in)	Wt/Len (l...	Grade	Top (ftKB)	Set Depth...	
Surface		2/8/1994		8 5/8	24.00		10.0	339.0	
Production, 2,903.0ftKB									
Casing Description		Run Date		OD (in)	Wt/Len (l...	Grade	Top (ftKB)	Set Depth...	
Production		12/19/2008		2 7/8	6.50	N-80	10.0	2,903.0	
Production, 7,308.0ftKB									
Casing Description		Run Date		OD (in)	Wt/Len (l...	Grade	Top (ftKB)	Set Depth...	
Production		2/12/1994		2 7/8	6.50	N-80	10.0	7,308.0	
Cement									
Description					Top Depth (ftKB)		Bottom Depth (ftKB)		
SURFACE CASING CEMENT					10.0		339.0		
Description					Top Depth (ftKB)		Bottom Depth (ftKB)		
PRODUCTION CASING CEMENT					3,030.0		4,739.0		
Description					Top Depth (ftKB)		Bottom Depth (ftKB)		
PRODUCTION CASING CEMENT					6,210.0		7,308.0		
Description					Top Depth (ftKB)		Bottom Depth (ftKB)		
CASING REPAIR CEMENT					10.0		451.0		
Description					Top Depth (ftKB)		Bottom Depth (ftKB)		
CASING REPAIR CEMENT					451.0		2,800.0		
Description					Top Depth (ftKB)		Bottom Depth (ftKB)		
CASING REPAIR CEMENT					2,800.0		3,018.0		
Tubing Components									
Item Des		OD (in)	Wt (lb/ft)	Grade	Jts	Len (ft)	Btm (ftKB)	Btm (TVD) (ftKB)	
Tubing		1.66	2.30	J-55	212	6,989.00	6,997.9		
Notched collar		1.66			1	1.10	6,999.0		
Perforation Data									
Zone		Bnch/St g	Entered Shot Total	Top (ftKB)		Btm (ftKB)		Date	
CODELL, ORIGINAL HOLE			42	7,018.00		7,032.00		2/15/1994	
CODELL, ORIGINAL HOLE			56	7,018.00		7,032.00		1/6/2009	
Stimulations & Treatments									
Date		Zone			Primary Job Type				
3/24/1994		CODELL, ORIGINAL HOLE			DRILLING/COMPLETION - ORIGINAL				
Technical Result			Tech Result Details				Tech Result Note		
Comment									

Well Name: FEIT E23-05

VERTICAL - ORIGINAL HOLE, 2/5/2013 11:30:42 AM



Stimulations & Treatments				
Date	Zone	Primary Job Type		
1/16/2009	CODELL, ORIGINAL HOLE	RE-FRAC		
Technical Result		Tech Result Details	Tech Result Note	
Success		According to Plan		
Comment				
(CODELL RF): JOB WENT WELL WITH NO ISSUES TO REPORT.				
Other In Hole				
Run Date	Des	OD (in)	Top (ftKB)	Btm (ftKB)
Logs				
Date	Type	Top (ftKB)	Btm (ftKB)	
2/12/1994	COMPENSATED DENSITY	4,000.0	7,793.0	
2/12/1994	INDUCTION	4,000.0	7,793.0	
2/15/1994	CBL/CCL/GR	2,780.0	7,286.0	
12/31/2008	CBL/CCL/GR/VDL	220.0	3,200.0	
1/12/2011	GYRO	10.0	7,246.0	