

BILL BARRETT CORP

WELD COUNTY, COLORADO

CVR 5-63-32-40H

CVR 5-63-32-40H

Wellbore #1

Plan: Design #1

Standard Planning Report

11 January, 2013



Bill Barrett Corporation

SITE DETAILS: CVR 5-63-32-40H
Wattenberg

Site Latitude: 40° 21' 18.000 N
Site Longitude: 104° 28' 7.140 W

COMPANY DETAILS: BILL BARRETT CORP

Calculation Method: Minimum Curvature
Error System: ISCWSA
Scan Method: Closest Approach 3D
Error Surface: Elliptical Conic
Warning Method: Error Ratio

Positional Uncertainty: 0.0
Convergence: 0.67
Local North: True

WELL DETAILS: CVR 5-63-32-40H

Ground Level: 4578.0
Easting: 3287425.84
Latitude: 40° 21' 18.000 N
Longitude: 104° 28' 7.140 W
Slot

+N/-S +E/-W
0.0 0.0

Northing
1373838.61

Easting
3287425.84

Latitude
40° 21' 18.000 N

Longitude
104° 28' 7.140 W

WELLBORE TARGET DETAILS (LAT/LONG)

Name	TVD	+N/-S	+E/-W	Latitude	Longitude	Shape
CVR 5-63-32-40H PBHL	6360.0	160.7	4581.7	40° 21' 19.584 N	104° 27' 7.956 W	Point
CVR 5-63-32-40H LP	6410.0	156.7	267.5	40° 21' 19.548 N	104° 28' 3.684 W	Point

SECTION DETAILS

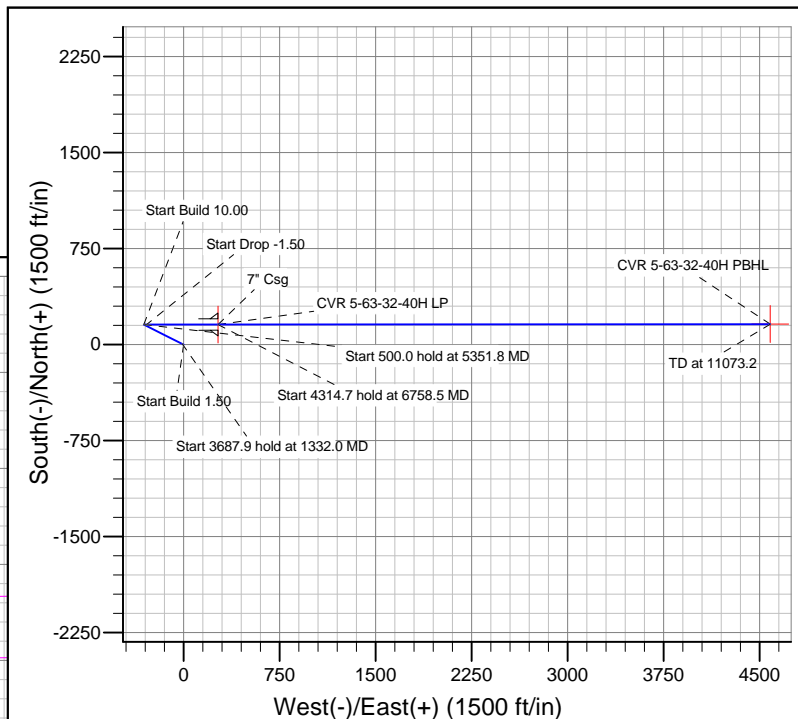
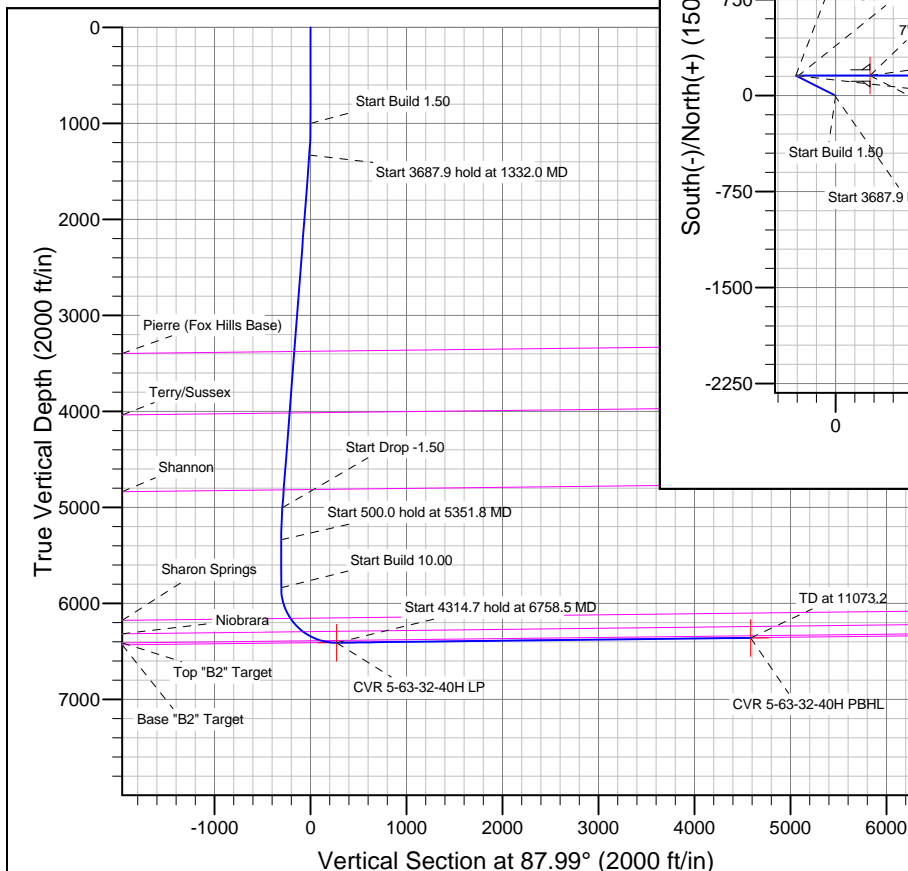
Sec	MD	Inc	Azi	TVD	+N/-S	+E/-W	DLeg	TFace	VSec	Target
1	0.0	0.00	0.00	0.0	0.0	0.0	0.00	0.00	0.0	
2	1000.0	0.00	0.00	1000.0	0.0	0.0	0.00	0.00	0.0	
3	1332.0	4.98	296.58	1331.5	6.5	-12.9	1.50	296.58	-12.7	
4	5019.9	4.98	296.58	5005.5	149.7	-299.1	0.00	0.00	-293.7	
5	5351.8	0.00	0.00	5337.1	156.1	-312.0	1.50	180.00	-306.4	
6	5851.8	0.00	0.00	5837.1	156.1	-312.0	0.00	0.00	-306.4	
7	6758.5	90.66	89.95	6410.0	156.7	267.6	10.00	89.95	272.9	
8	11073.2	90.66	89.95	6360.0	160.4	4582.0	0.00	0.00	4584.8	CVR 5-63-32-40H PBHL

FORMATION TOP DETAILS

TVDPath	MDPath	Formation
3376.0	3384.1	Pierre (Fox Hills Base)
4016.6	4027.1	Terry/Sussex
4817.3	4830.9	Shannon
6156.5	6190.6	Sharon Springs
6295.0	6382.3	Niobrara
6388.8	6595.2	Top "B2" Target
6407.6	6699.0	Base "B2" Target

CASING DETAILS

TVD	MD	Name	Size
6410.0	6758.5	7" Csg	7



Azimuths to True North
Magnetic North: 8.49°

Magnetic Field
Strength: 52975.5nT
Dip Angle: 67.01°
Date: 1/9/2013
Model: IGRF2010

Bill Barrett Corp

Planning Report

Database:	Compass	Local Co-ordinate Reference:	Well CVR 5-63-32-40H
Company:	BILL BARRETT CORP	TVD Reference:	KB @ 4602.0ft (Original Well Elev)
Project:	WELD COUNTY, COLORADO	MD Reference:	KB @ 4602.0ft (Original Well Elev)
Site:	CVR 5-63-32-40H	North Reference:	True
Well:	CVR 5-63-32-40H	Survey Calculation Method:	Minimum Curvature
Wellbore:	Wellbore #1		
Design:	Design #1		

Project	WELD COUNTY, COLORADO		
Map System:	US State Plane 1983	System Datum:	Mean Sea Level
Geo Datum:	North American Datum 1983		
Map Zone:	Colorado Northern Zone		

Site		CVR 5-63-32-40H			
Site Position:		Northing:	1,373,838.61 ft	Latitude:	40° 21' 18.000 N
From:	Lat/Long	Easting:	3,287,425.84 ft	Longitude:	104° 28' 7.140 W
Position Uncertainty:	0.0 ft	Slot Radius:	"	Grid Convergence:	0.67 °

Well	CVR 5-63-32-40H					
Well Position	+N/-S	0.0 ft	Northing:	1,373,838.61 ft	Latitude:	40° 21' 18.000 N
	+E/-W	0.0 ft	Easting:	3,287,425.84 ft	Longitude:	104° 28' 7.140 W
Position Uncertainty		0.0 ft	Wellhead Elevation:	ft	Ground Level:	4,578.0 ft

Wellbore	Wellbore #1				
Magnetics	Model Name	Sample Date	Declination (°)	Dip Angle (°)	Field Strength (nT)
	IGRF2010	1/9/2013	8.49	67.01	52,976

Design	Design #1			
Audit Notes:				
Version:	Phase:	PLAN	Tie On Depth:	0.0
Vertical Section:	Depth From (TVD) (ft)	+N/-S (ft)	+E/-W (ft)	Direction (°)
	0.0	0.0	0.0	87.99

Plan Sections										
Measured Depth (ft)	Inclination (°)	Azimuth (°)	Vertical Depth (ft)	+N/-S (ft)	+E/-W (ft)	Dogleg Rate (°/100ft)	Build Rate (°/100ft)	Turn Rate (°/100ft)	TFO (°)	Target
0.0	0.00	0.00	0.0	0.0	0.0	0.00	0.00	0.00	0.00	
1,000.0	0.00	0.00	1,000.0	0.0	0.0	0.00	0.00	0.00	0.00	
1,332.0	4.98	296.58	1,331.5	6.5	-12.9	1.50	1.50	0.00	296.58	
5,019.9	4.98	296.58	5,005.5	149.7	-299.1	0.00	0.00	0.00	0.00	
5,351.8	0.00	0.00	5,337.1	156.1	-312.0	1.50	-1.50	0.00	180.00	
5,851.8	0.00	0.00	5,837.1	156.1	-312.0	0.00	0.00	0.00	0.00	
6,758.5	90.66	89.95	6,410.0	156.7	267.6	10.00	10.00	0.00	89.95	
11,073.2	90.66	89.95	6,360.0	160.4	4,582.0	0.00	0.00	0.00	0.00	CVR 5-63-32-40H PB

Bill Barrett Corp

Planning Report

Database:	Compass	Local Co-ordinate Reference:	Well CVR 5-63-32-40H
Company:	BILL BARRETT CORP	TVD Reference:	KB @ 4602.0ft (Original Well Elev)
Project:	WELD COUNTY, COLORADO	MD Reference:	KB @ 4602.0ft (Original Well Elev)
Site:	CVR 5-63-32-40H	North Reference:	True
Well:	CVR 5-63-32-40H	Survey Calculation Method:	Minimum Curvature
Wellbore:	Wellbore #1		
Design:	Design #1		

Planned Survey									
Measured Depth (ft)	Inclination (°)	Azimuth (°)	Vertical Depth (ft)	+N/-S (ft)	+E/-W (ft)	Vertical Section (ft)	Dogleg Rate (°/100ft)	Build Rate (°/100ft)	Turn Rate (°/100ft)
0.0	0.00	0.00	0.0	0.0	0.0	0.0	0.00	0.00	0.00
100.0	0.00	0.00	100.0	0.0	0.0	0.0	0.00	0.00	0.00
200.0	0.00	0.00	200.0	0.0	0.0	0.0	0.00	0.00	0.00
300.0	0.00	0.00	300.0	0.0	0.0	0.0	0.00	0.00	0.00
400.0	0.00	0.00	400.0	0.0	0.0	0.0	0.00	0.00	0.00
500.0	0.00	0.00	500.0	0.0	0.0	0.0	0.00	0.00	0.00
600.0	0.00	0.00	600.0	0.0	0.0	0.0	0.00	0.00	0.00
700.0	0.00	0.00	700.0	0.0	0.0	0.0	0.00	0.00	0.00
800.0	0.00	0.00	800.0	0.0	0.0	0.0	0.00	0.00	0.00
900.0	0.00	0.00	900.0	0.0	0.0	0.0	0.00	0.00	0.00
1,000.0	0.00	0.00	1,000.0	0.0	0.0	0.0	0.00	0.00	0.00
Start Build 1.50									
1,100.0	1.50	296.58	1,100.0	0.6	-1.2	-1.1	1.50	1.50	0.00
1,200.0	3.00	296.58	1,199.9	2.3	-4.7	-4.6	1.50	1.50	0.00
1,300.0	4.50	296.58	1,299.7	5.3	-10.5	-10.3	1.50	1.50	0.00
1,332.0	4.98	296.58	1,331.5	6.5	-12.9	-12.7	1.50	1.50	0.00
Start 3687.9 hold at 1332.0 MD									
1,400.0	4.98	296.58	1,399.3	9.1	-18.2	-17.8	0.00	0.00	0.00
1,500.0	4.98	296.58	1,498.9	13.0	-25.9	-25.5	0.00	0.00	0.00
1,600.0	4.98	296.58	1,598.6	16.9	-33.7	-33.1	0.00	0.00	0.00
1,700.0	4.98	296.58	1,698.2	20.7	-41.5	-40.7	0.00	0.00	0.00
1,800.0	4.98	296.58	1,797.8	24.6	-49.2	-48.3	0.00	0.00	0.00
1,900.0	4.98	296.58	1,897.4	28.5	-57.0	-56.0	0.00	0.00	0.00
2,000.0	4.98	296.58	1,997.1	32.4	-64.7	-63.6	0.00	0.00	0.00
2,100.0	4.98	296.58	2,096.7	36.3	-72.5	-71.2	0.00	0.00	0.00
2,200.0	4.98	296.58	2,196.3	40.2	-80.3	-78.8	0.00	0.00	0.00
2,300.0	4.98	296.58	2,295.9	44.1	-88.0	-86.4	0.00	0.00	0.00
2,400.0	4.98	296.58	2,395.6	47.9	-95.8	-94.1	0.00	0.00	0.00
2,500.0	4.98	296.58	2,495.2	51.8	-103.6	-101.7	0.00	0.00	0.00
2,600.0	4.98	296.58	2,594.8	55.7	-111.3	-109.3	0.00	0.00	0.00
2,700.0	4.98	296.58	2,694.4	59.6	-119.1	-116.9	0.00	0.00	0.00
2,800.0	4.98	296.58	2,794.0	63.5	-126.8	-124.5	0.00	0.00	0.00
2,900.0	4.98	296.58	2,893.7	67.4	-134.6	-132.2	0.00	0.00	0.00
3,000.0	4.98	296.58	2,993.3	71.2	-142.4	-139.8	0.00	0.00	0.00
3,100.0	4.98	296.58	3,092.9	75.1	-150.1	-147.4	0.00	0.00	0.00
3,200.0	4.98	296.58	3,192.5	79.0	-157.9	-155.0	0.00	0.00	0.00
3,300.0	4.98	296.58	3,292.2	82.9	-165.7	-162.6	0.00	0.00	0.00
3,384.1	4.98	296.58	3,376.0	86.2	-172.2	-169.1	0.00	0.00	0.00
Pierre (Fox Hills Base)									
3,400.0	4.98	296.58	3,391.8	86.8	-173.4	-170.3	0.00	0.00	0.00
3,500.0	4.98	296.58	3,491.4	90.7	-181.2	-177.9	0.00	0.00	0.00
3,600.0	4.98	296.58	3,591.0	94.5	-188.9	-185.5	0.00	0.00	0.00
3,700.0	4.98	296.58	3,690.6	98.4	-196.7	-193.1	0.00	0.00	0.00
3,800.0	4.98	296.58	3,790.3	102.3	-204.5	-200.8	0.00	0.00	0.00
3,900.0	4.98	296.58	3,889.9	106.2	-212.2	-208.4	0.00	0.00	0.00
4,000.0	4.98	296.58	3,989.5	110.1	-220.0	-216.0	0.00	0.00	0.00
4,027.1	4.98	296.58	4,016.6	111.1	-222.1	-218.1	0.00	0.00	0.00
Terry/Sussex									
4,100.0	4.98	296.58	4,089.1	114.0	-227.7	-223.6	0.00	0.00	0.00
4,200.0	4.98	296.58	4,188.8	117.9	-235.5	-231.2	0.00	0.00	0.00
4,300.0	4.98	296.58	4,288.4	121.7	-243.3	-238.9	0.00	0.00	0.00
4,400.0	4.98	296.58	4,388.0	125.6	-251.0	-246.5	0.00	0.00	0.00
4,500.0	4.98	296.58	4,487.6	129.5	-258.8	-254.1	0.00	0.00	0.00
4,600.0	4.98	296.58	4,587.2	133.4	-266.6	-261.7	0.00	0.00	0.00

Bill Barrett Corp

Planning Report

Database:	Compass	Local Co-ordinate Reference:	Well CVR 5-63-32-40H
Company:	BILL BARRETT CORP	TVD Reference:	KB @ 4602.0ft (Original Well Elev)
Project:	WELD COUNTY, COLORADO	MD Reference:	KB @ 4602.0ft (Original Well Elev)
Site:	CVR 5-63-32-40H	North Reference:	True
Well:	CVR 5-63-32-40H	Survey Calculation Method:	Minimum Curvature
Wellbore:	Wellbore #1		
Design:	Design #1		

Planned Survey

Measured Depth (ft)	Inclination (°)	Azimuth (°)	Vertical Depth (ft)	+N/-S (ft)	+E/-W (ft)	Vertical Section (ft)	Dogleg Rate (°/100ft)	Build Rate (°/100ft)	Turn Rate (°/100ft)
4,700.0	4.98	296.58	4,686.9	137.3	-274.3	-269.3	0.00	0.00	0.00
4,800.0	4.98	296.58	4,786.5	141.2	-282.1	-277.0	0.00	0.00	0.00
4,830.9	4.98	296.58	4,817.3	142.4	-284.5	-279.3	0.00	0.00	0.00
Shannon									
4,900.0	4.98	296.58	4,886.1	145.0	-289.8	-284.6	0.00	0.00	0.00
5,000.0	4.98	296.58	4,985.7	148.9	-297.6	-292.2	0.00	0.00	0.00
5,019.9	4.98	296.58	5,005.5	149.7	-299.1	-293.7	0.00	0.00	0.00
Start Drop -1.50									
5,100.0	3.78	296.58	5,085.4	152.4	-304.6	-299.1	1.50	-1.50	0.00
5,200.0	2.28	296.58	5,185.3	154.8	-309.3	-303.7	1.50	-1.50	0.00
5,300.0	0.78	296.58	5,285.2	156.0	-311.7	-306.1	1.50	-1.50	0.00
5,351.8	0.00	0.00	5,337.1	156.1	-312.0	-306.4	1.50	-1.50	122.35
Start 500.0 hold at 5351.8 MD									
5,400.0	0.00	0.00	5,385.2	156.1	-312.0	-306.4	0.00	0.00	0.00
5,500.0	0.00	0.00	5,485.2	156.1	-312.0	-306.4	0.00	0.00	0.00
5,600.0	0.00	0.00	5,585.2	156.1	-312.0	-306.4	0.00	0.00	0.00
5,700.0	0.00	0.00	5,685.2	156.1	-312.0	-306.4	0.00	0.00	0.00
5,800.0	0.00	0.00	5,785.2	156.1	-312.0	-306.4	0.00	0.00	0.00
5,851.8	0.00	0.00	5,837.1	156.1	-312.0	-306.4	0.00	0.00	0.00
Start Build 10.00									
5,900.0	4.82	89.95	5,885.2	156.2	-310.0	-304.4	10.00	10.00	0.00
6,000.0	14.82	89.95	5,983.6	156.2	-293.0	-287.3	10.00	10.00	0.00
6,100.0	24.82	89.95	6,077.6	156.2	-259.1	-253.5	10.00	10.00	0.00
6,190.6	33.88	89.95	6,156.5	156.2	-214.8	-209.2	10.00	10.00	0.00
Sharon Springs									
6,200.0	34.82	89.95	6,164.2	156.2	-209.5	-203.9	10.00	10.00	0.00
6,300.0	44.82	89.95	6,240.9	156.3	-145.5	-140.0	10.00	10.00	0.00
6,382.3	53.05	89.95	6,295.0	156.3	-83.5	-78.0	10.00	10.00	0.00
Niobrara									
6,400.0	54.82	89.95	6,305.4	156.4	-69.2	-63.7	10.00	10.00	0.00
6,500.0	64.82	89.95	6,355.6	156.4	17.1	22.6	10.00	10.00	0.00
6,595.2	74.34	89.95	6,388.8	156.5	106.3	111.7	10.00	10.00	0.00
Top "B2" Target									
6,600.0	74.82	89.95	6,390.0	156.5	110.9	116.3	10.00	10.00	0.00
6,699.0	84.71	89.95	6,407.6	156.6	208.1	213.5	10.00	10.00	0.00
Base "B2" Target									
6,700.0	84.82	89.95	6,407.7	156.6	209.2	214.5	10.00	10.00	0.00
6,758.5	90.66	89.95	6,410.0	156.7	267.6	272.9	10.00	10.00	0.00
Start 4314.7 hold at 6758.5 MD - 7" Csg									
6,800.0	90.66	89.95	6,409.5	156.7	309.1	314.4	0.00	0.00	0.00
6,900.0	90.66	89.95	6,408.4	156.8	409.1	414.3	0.00	0.00	0.00
7,000.0	90.66	89.95	6,407.2	156.9	509.1	514.2	0.00	0.00	0.00
7,100.0	90.66	89.95	6,406.0	157.0	609.1	614.2	0.00	0.00	0.00
7,200.0	90.66	89.95	6,404.9	157.0	709.1	714.1	0.00	0.00	0.00
7,300.0	90.66	89.95	6,403.7	157.1	809.0	814.0	0.00	0.00	0.00
7,400.0	90.66	89.95	6,402.6	157.2	909.0	914.0	0.00	0.00	0.00
7,500.0	90.66	89.95	6,401.4	157.3	1,009.0	1,013.9	0.00	0.00	0.00
7,600.0	90.66	89.95	6,400.3	157.4	1,109.0	1,113.9	0.00	0.00	0.00
7,700.0	90.66	89.95	6,399.1	157.5	1,209.0	1,213.8	0.00	0.00	0.00
7,800.0	90.66	89.95	6,397.9	157.6	1,309.0	1,313.7	0.00	0.00	0.00
7,900.0	90.66	89.95	6,396.8	157.7	1,409.0	1,413.7	0.00	0.00	0.00
8,000.0	90.66	89.95	6,395.6	157.7	1,509.0	1,513.6	0.00	0.00	0.00
8,100.0	90.66	89.95	6,394.5	157.8	1,609.0	1,613.5	0.00	0.00	0.00

Bill Barrett Corp

Planning Report

Database:	Compass	Local Co-ordinate Reference:	Well CVR 5-63-32-40H
Company:	BILL BARRETT CORP	TVD Reference:	KB @ 4602.0ft (Original Well Elev)
Project:	WELD COUNTY, COLORADO	MD Reference:	KB @ 4602.0ft (Original Well Elev)
Site:	CVR 5-63-32-40H	North Reference:	True
Well:	CVR 5-63-32-40H	Survey Calculation Method:	Minimum Curvature
Wellbore:	Wellbore #1		
Design:	Design #1		

Planned Survey									
Measured Depth (ft)	Inclination (°)	Azimuth (°)	Vertical Depth (ft)	+N/-S (ft)	+E/-W (ft)	Vertical Section (ft)	Dogleg Rate (°/100ft)	Build Rate (°/100ft)	Turn Rate (°/100ft)
8,200.0	90.66	89.95	6,393.3	157.9	1,709.0	1,713.5	0.00	0.00	0.00
8,300.0	90.66	89.95	6,392.1	158.0	1,809.0	1,813.4	0.00	0.00	0.00
8,400.0	90.66	89.95	6,391.0	158.1	1,909.0	1,913.3	0.00	0.00	0.00
8,500.0	90.66	89.95	6,389.8	158.2	2,009.0	2,013.3	0.00	0.00	0.00
8,600.0	90.66	89.95	6,388.7	158.3	2,109.0	2,113.2	0.00	0.00	0.00
8,700.0	90.66	89.95	6,387.5	158.3	2,209.0	2,213.1	0.00	0.00	0.00
8,800.0	90.66	89.95	6,386.4	158.4	2,308.9	2,313.1	0.00	0.00	0.00
8,900.0	90.66	89.95	6,385.2	158.5	2,408.9	2,413.0	0.00	0.00	0.00
9,000.0	90.66	89.95	6,384.0	158.6	2,508.9	2,512.9	0.00	0.00	0.00
9,100.0	90.66	89.95	6,382.9	158.7	2,608.9	2,612.9	0.00	0.00	0.00
9,200.0	90.66	89.95	6,381.7	158.8	2,708.9	2,712.8	0.00	0.00	0.00
9,300.0	90.66	89.95	6,380.6	158.9	2,808.9	2,812.8	0.00	0.00	0.00
9,400.0	90.66	89.95	6,379.4	159.0	2,908.9	2,912.7	0.00	0.00	0.00
9,500.0	90.66	89.95	6,378.2	159.0	3,008.9	3,012.6	0.00	0.00	0.00
9,600.0	90.66	89.95	6,377.1	159.1	3,108.9	3,112.6	0.00	0.00	0.00
9,700.0	90.66	89.95	6,375.9	159.2	3,208.9	3,212.5	0.00	0.00	0.00
9,800.0	90.66	89.95	6,374.8	159.3	3,308.9	3,312.4	0.00	0.00	0.00
9,900.0	90.66	89.95	6,373.6	159.4	3,408.9	3,412.4	0.00	0.00	0.00
10,000.0	90.66	89.95	6,372.5	159.5	3,508.9	3,512.3	0.00	0.00	0.00
10,100.0	90.66	89.95	6,371.3	159.6	3,608.9	3,612.2	0.00	0.00	0.00
10,200.0	90.66	89.95	6,370.1	159.7	3,708.9	3,712.2	0.00	0.00	0.00
10,300.0	90.66	89.95	6,369.0	159.7	3,808.8	3,812.1	0.00	0.00	0.00
10,400.0	90.66	89.95	6,367.8	159.8	3,908.8	3,912.0	0.00	0.00	0.00
10,500.0	90.66	89.95	6,366.7	159.9	4,008.8	4,012.0	0.00	0.00	0.00
10,600.0	90.66	89.95	6,365.5	160.0	4,108.8	4,111.9	0.00	0.00	0.00
10,700.0	90.66	89.95	6,364.3	160.1	4,208.8	4,211.8	0.00	0.00	0.00
10,800.0	90.66	89.95	6,363.2	160.2	4,308.8	4,311.8	0.00	0.00	0.00
10,900.0	90.66	89.95	6,362.0	160.3	4,408.8	4,411.7	0.00	0.00	0.00
11,000.0	90.66	89.95	6,360.9	160.4	4,508.8	4,511.6	0.00	0.00	0.00
11,073.2	90.66	89.95	6,360.0	160.4	4,582.0	4,584.8	0.00	0.00	0.00

Targets									
Target Name - hit/miss target - Shape	Dip Angle (°)	Dip Dir. (°)	TVD (ft)	+N/-S (ft)	+E/-W (ft)	Northing (ft)	Easting (ft)	Latitude	Longitude
CVR 5-63-32-40H PBHL - plan misses by 0.3ft at 11072.9ft MD (6360.0 TVD, 160.4 N, 4581.7 E) - Point	0.00	0.00	6,360.0	160.7	4,581.7	1,374,052.60	3,292,005.38	40° 21' 19.584 N	104° 27' 7.956 W
CVR 5-63-32-40H LP - plan hits target - Point	0.00	0.00	6,410.0	156.7	267.5	1,373,998.36	3,287,691.55	40° 21' 19.548 N	104° 28' 3.684 W

Bill Barrett Corp

Planning Report

Database:	Compass	Local Co-ordinate Reference:	Well CVR 5-63-32-40H
Company:	BILL BARRETT CORP	TVD Reference:	KB @ 4602.0ft (Original Well Elev)
Project:	WELD COUNTY, COLORADO	MD Reference:	KB @ 4602.0ft (Original Well Elev)
Site:	CVR 5-63-32-40H	North Reference:	True
Well:	CVR 5-63-32-40H	Survey Calculation Method:	Minimum Curvature
Wellbore:	Wellbore #1		
Design:	Design #1		

Formations						
Measured Depth (ft)	Vertical Depth (ft)	Name	Lithology	Dip (°)	Dip Direction (°)	
3,384.1	3,374.0	Pierre (Fox Hills Base)		-0.66	89.95	
4,027.1	4,014.0	Terry/Sussex		-0.66	89.95	
4,830.9	4,814.0	Shannon		-0.66	89.95	
6,190.6	6,154.0	Sharon Springs		-0.66	89.95	
6,382.3	6,294.0	Niobrara		-0.66	89.95	
6,595.2	6,390.0	Top "B2" Target		-0.66	89.95	
6,699.0	6,410.0	Base "B2" Target		-0.66	89.95	

Plan Annotations					
Measured Depth (ft)	Vertical Depth (ft)	Local Coordinates			
		+N/-S (ft)	+E/-W (ft)	Comment	
1,000.0	1,000.0	0.0	0.0	Start Build 1.50	
1,332.0	1,331.5	6.5	-12.9	Start 3687.9 hold at 1332.0 MD	
5,019.9	5,005.5	149.7	-299.1	Start Drop -1.50	
5,351.8	5,337.1	156.1	-312.0	Start 500.0 hold at 5351.8 MD	
5,851.8	5,837.1	156.1	-312.0	Start Build 10.00	
6,758.5	6,410.0	156.7	267.6	Start 4314.7 hold at 6758.5 MD	
11,073.2	6,360.0	160.4	4,582.0	TD at 11073.2	