

BILL BARRETT CORP

WELD COUNTY, COLORADO

CVR 5-63-32-25H

CVR 5-63-32-25H

Wellbore #1

Plan: Design #1

Standard Planning Report

10 January, 2013



Bill Barrett Corporation

SITE DETAILS: CVR 5-63-32-25H
Wattenberg

Site Latitude: 40° 21' 18.468 N
Site Longitude: 104° 28' 7.140 W

COMPANY DETAILS: BILL BARRETT CORP

Calculation Method: Minimum Curvature
Error System: ISCWSA
Scan Method: Closest Approach 3D
Error Surface: Elliptical Conic
Warning Method: Error Ratio

Positional Uncertainty: 0.0
Convergence: 0.67
Local North: True

WELL DETAILS: CVR 5-63-32-25H

Ground Level: 4578.0
Northing 1373885.96 Easting 3287425.29 Latitude 40° 21' 18.468 N Longitude 104° 28' 7.140 W Slot

WELLBORE TARGET DETAILS (LAT/LONG)

Name	TVD	+N/-S	+E/-W	Latitude	Longitude	Shape
CVR 5-63-32-25H PBHL	6420.0	688.9	4578.8	40° 21' 25.272 N	104° 27' 7.992 W	Point
CVR 5-63-32-25H LP	6450.0	695.8	262.0	40° 21' 25.344 N	104° 28' 3.756 W	Point

SECTION DETAILS

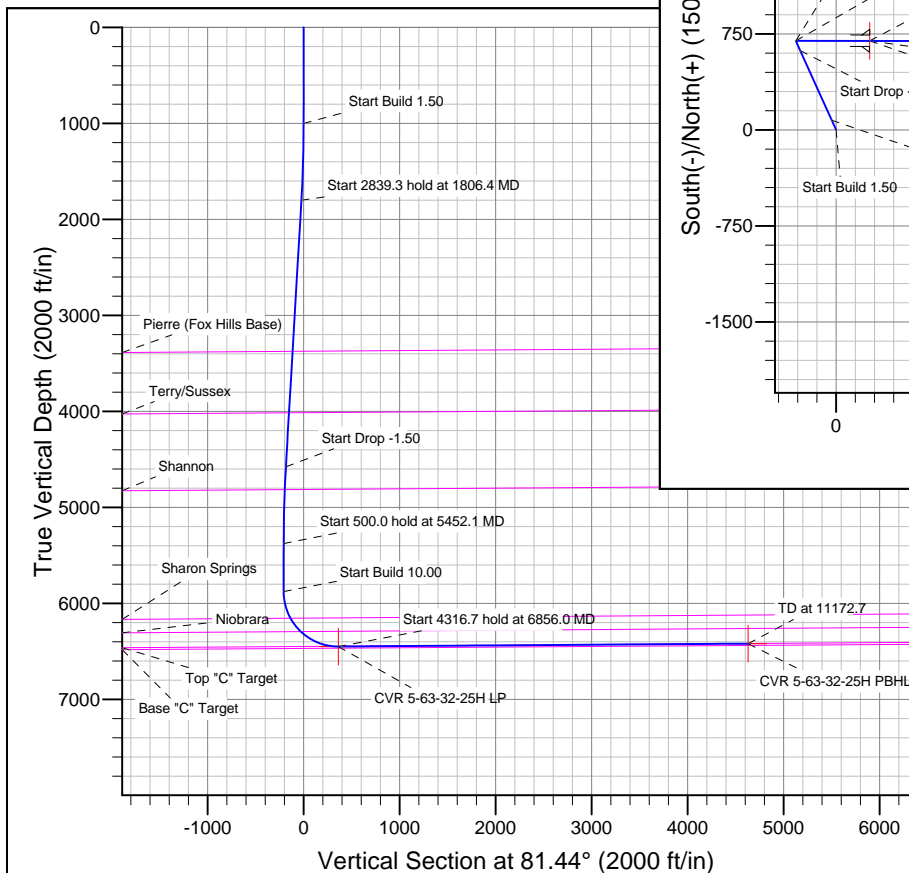
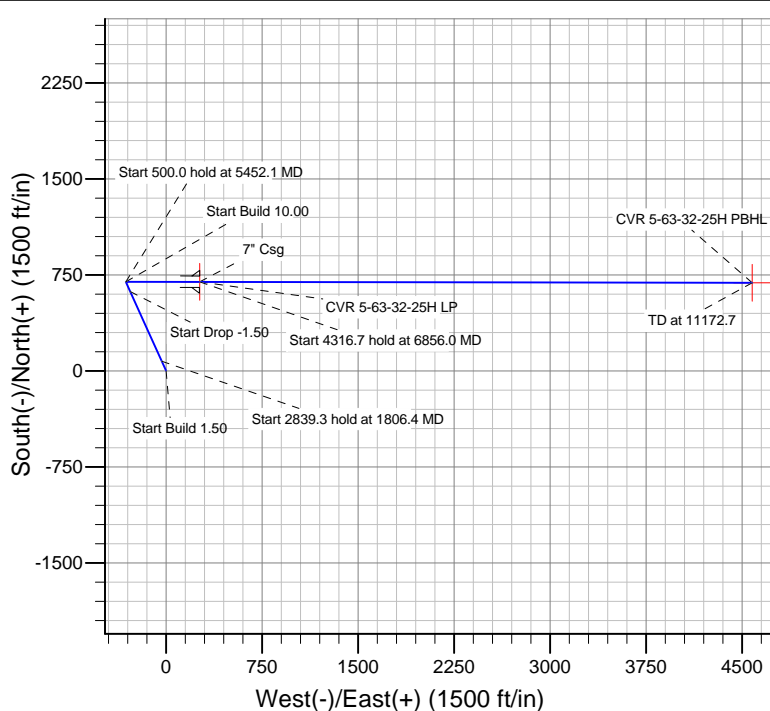
Sec	MD	Inc	Azi	TVD	+N/-S	+E/-W	DLeg	TFace	VSec	Target
1	0.0	0.00	0.00	0.0	0.0	0.0	0.00	0.00	0.0	
2	1000.0	0.00	0.00	1000.0	0.0	0.0	0.00	0.00	0.0	
3	1806.4	12.10	335.68	1800.4	77.3	-34.9	1.50	335.68	-23.0	
4	4645.7	12.10	335.68	4576.7	619.4	-280.0	0.00	0.00	-184.7	
5	5452.1	0.00	0.00	5377.1	696.7	-314.9	1.50	180.00	-207.7	
6	5952.1	0.00	0.00	5877.1	696.7	-314.9	0.00	0.00	-207.7	
7	6856.0	90.40	90.09	6450.0	695.8	262.0	10.00	90.09	362.7	
8	11172.7	90.40	90.09	6420.0	689.0	4578.6	0.00	0.00	4630.2	CVR 5-63-32-25H PBHL

FORMATION TOP DETAILS

TVDPath	MDPath	Formation
3375.2	3417.0	Base "C" Target
4015.6	4071.9	Pierre (Fox Hills Base)
4816.1	4889.0	Terry/Sussex
6155.7	6243.0	Shannon
6294.9	6420.4	Sharon Springs
6448.5	6810.2	Niobrara
		Top "C" Target

CASING DETAILS

TVD	MD	Name	Size
6450.0	6856.0	7" Csg	7



Azimuths to True North
Magnetic North: 8.49°

Magnetic Field
Strength: 52975.6snT
Dip Angle: 67.01°
Date: 1/9/2013
Model: IGRF2010

Bill Barrett Corp

Planning Report

Database:	Compass	Local Co-ordinate Reference:	Well CVR 5-63-32-25H
Company:	BILL BARRETT CORP	TVD Reference:	KB @ 4602.0ft (Original Well Elev)
Project:	WELD COUNTY, COLORADO	MD Reference:	KB @ 4602.0ft (Original Well Elev)
Site:	CVR 5-63-32-25H	North Reference:	True
Well:	CVR 5-63-32-25H	Survey Calculation Method:	Minimum Curvature
Wellbore:	Wellbore #1		
Design:	Design #1		

Project	WELD COUNTY, COLORADO		
Map System:	US State Plane 1983	System Datum:	Mean Sea Level
Geo Datum:	North American Datum 1983		
Map Zone:	Colorado Northern Zone		

Site		CVR 5-63-32-25H			
Site Position:		Northing:	1,373,885.97 ft	Latitude:	40° 21' 18.468 N
From:	Lat/Long	Easting:	3,287,425.29 ft	Longitude:	104° 28' 7.140 W
Position Uncertainty:	0.0 ft	Slot Radius:	"	Grid Convergence:	0.67 °

Well		CVR 5-63-32-25H				
Well Position	+N/-S	0.0 ft	Northing:	1,373,885.96 ft	Latitude:	40° 21' 18.468 N
	+E/-W	0.0 ft	Easting:	3,287,425.29 ft	Longitude:	104° 28' 7.140 W
Position Uncertainty		0.0 ft	Wellhead Elevation:	ft	Ground Level:	4,578.0 ft

Wellbore	Wellbore #1				
Magnetics	Model Name	Sample Date	Declination (°)	Dip Angle (°)	Field Strength (nT)
	IGRF2010	1/9/2013	8.49	67.01	52,976

Design	Design #1			
Audit Notes:				
Version:	Phase:	PLAN	Tie On Depth:	0.0
Vertical Section:	Depth From (TVD) (ft)	+N/-S (ft)	+E/-W (ft)	Direction (°)
	0.0	0.0	0.0	81.44

Plan Sections										
Measured Depth (ft)	Inclination (°)	Azimuth (°)	Vertical Depth (ft)	+N/-S (ft)	+E/-W (ft)	Dogleg Rate (°/100ft)	Build Rate (°/100ft)	Turn Rate (°/100ft)	TFO (°)	Target
0.0	0.00	0.00	0.0	0.0	0.0	0.00	0.00	0.00	0.00	
1,000.0	0.00	0.00	1,000.0	0.0	0.0	0.00	0.00	0.00	0.00	
1,806.4	12.10	335.68	1,800.4	77.3	-34.9	1.50	1.50	0.00	335.68	
4,645.7	12.10	335.68	4,576.7	619.4	-280.0	0.00	0.00	0.00	0.00	
5,452.1	0.00	0.00	5,377.1	696.7	-314.9	1.50	-1.50	0.00	180.00	
5,952.1	0.00	0.00	5,877.1	696.7	-314.9	0.00	0.00	0.00	0.00	
6,856.0	90.40	90.09	6,450.0	695.8	262.0	10.00	10.00	0.00	90.09	
11,172.7	90.40	90.09	6,420.0	689.0	4,578.6	0.00	0.00	0.00	0.00	CVR 5-63-32-25H PB

Bill Barrett Corp

Planning Report

Database:	Compass	Local Co-ordinate Reference:	Well CVR 5-63-32-25H
Company:	BILL BARRETT CORP	TVD Reference:	KB @ 4602.0ft (Original Well Elev)
Project:	WELD COUNTY, COLORADO	MD Reference:	KB @ 4602.0ft (Original Well Elev)
Site:	CVR 5-63-32-25H	North Reference:	True
Well:	CVR 5-63-32-25H	Survey Calculation Method:	Minimum Curvature
Wellbore:	Wellbore #1		
Design:	Design #1		

Planned Survey									
Measured Depth (ft)	Inclination (°)	Azimuth (°)	Vertical Depth (ft)	+N/-S (ft)	+E/-W (ft)	Vertical Section (ft)	Dogleg Rate (°/100ft)	Build Rate (°/100ft)	Turn Rate (°/100ft)
0.0	0.00	0.00	0.0	0.0	0.0	0.0	0.00	0.00	0.00
100.0	0.00	0.00	100.0	0.0	0.0	0.0	0.00	0.00	0.00
200.0	0.00	0.00	200.0	0.0	0.0	0.0	0.00	0.00	0.00
300.0	0.00	0.00	300.0	0.0	0.0	0.0	0.00	0.00	0.00
400.0	0.00	0.00	400.0	0.0	0.0	0.0	0.00	0.00	0.00
500.0	0.00	0.00	500.0	0.0	0.0	0.0	0.00	0.00	0.00
600.0	0.00	0.00	600.0	0.0	0.0	0.0	0.00	0.00	0.00
700.0	0.00	0.00	700.0	0.0	0.0	0.0	0.00	0.00	0.00
800.0	0.00	0.00	800.0	0.0	0.0	0.0	0.00	0.00	0.00
900.0	0.00	0.00	900.0	0.0	0.0	0.0	0.00	0.00	0.00
1,000.0	0.00	0.00	1,000.0	0.0	0.0	0.0	0.00	0.00	0.00
Start Build 1.50									
1,100.0	1.50	335.68	1,100.0	1.2	-0.5	-0.4	1.50	1.50	0.00
1,200.0	3.00	335.68	1,199.9	4.8	-2.2	-1.4	1.50	1.50	0.00
1,300.0	4.50	335.68	1,299.7	10.7	-4.8	-3.2	1.50	1.50	0.00
1,400.0	6.00	335.68	1,399.3	19.1	-8.6	-5.7	1.50	1.50	0.00
1,500.0	7.50	335.68	1,498.6	29.8	-13.5	-8.9	1.50	1.50	0.00
1,600.0	9.00	335.68	1,597.5	42.9	-19.4	-12.8	1.50	1.50	0.00
1,700.0	10.50	335.68	1,696.1	58.3	-26.3	-17.4	1.50	1.50	0.00
1,800.0	12.00	335.68	1,794.2	76.1	-34.4	-22.7	1.50	1.50	0.00
1,806.4	12.10	335.68	1,800.4	77.3	-34.9	-23.0	1.50	1.50	0.00
Start 2839.3 hold at 1806.4 MD									
1,900.0	12.10	335.68	1,891.9	95.2	-43.0	-28.4	0.00	0.00	0.00
2,000.0	12.10	335.68	1,989.7	114.2	-51.6	-34.1	0.00	0.00	0.00
2,100.0	12.10	335.68	2,087.5	133.3	-60.3	-39.8	0.00	0.00	0.00
2,200.0	12.10	335.68	2,185.3	152.4	-68.9	-45.4	0.00	0.00	0.00
2,300.0	12.10	335.68	2,283.1	171.5	-77.5	-51.1	0.00	0.00	0.00
2,400.0	12.10	335.68	2,380.8	190.6	-86.2	-56.8	0.00	0.00	0.00
2,500.0	12.10	335.68	2,478.6	209.7	-94.8	-62.5	0.00	0.00	0.00
2,600.0	12.10	335.68	2,576.4	228.8	-103.4	-68.2	0.00	0.00	0.00
2,700.0	12.10	335.68	2,674.2	247.9	-112.1	-73.9	0.00	0.00	0.00
2,800.0	12.10	335.68	2,772.0	267.0	-120.7	-79.6	0.00	0.00	0.00
2,900.0	12.10	335.68	2,869.7	286.1	-129.3	-85.3	0.00	0.00	0.00
3,000.0	12.10	335.68	2,967.5	305.2	-137.9	-91.0	0.00	0.00	0.00
3,100.0	12.10	335.68	3,065.3	324.3	-146.6	-96.7	0.00	0.00	0.00
3,200.0	12.10	335.68	3,163.1	343.4	-155.2	-102.4	0.00	0.00	0.00
3,300.0	12.10	335.68	3,260.9	362.5	-163.8	-108.1	0.00	0.00	0.00
3,400.0	12.10	335.68	3,358.6	381.6	-172.5	-113.8	0.00	0.00	0.00
3,417.0	12.10	335.68	3,375.2	384.8	-173.9	-114.7	0.00	0.00	0.00
Pierre (Fox Hills Base)									
3,500.0	12.10	335.68	3,456.4	400.7	-181.1	-119.5	0.00	0.00	0.00
3,600.0	12.10	335.68	3,554.2	419.8	-189.7	-125.1	0.00	0.00	0.00
3,700.0	12.10	335.68	3,652.0	438.9	-198.4	-130.8	0.00	0.00	0.00
3,800.0	12.10	335.68	3,749.8	457.9	-207.0	-136.5	0.00	0.00	0.00
3,900.0	12.10	335.68	3,847.5	477.0	-215.6	-142.2	0.00	0.00	0.00
4,000.0	12.10	335.68	3,945.3	496.1	-224.2	-147.9	0.00	0.00	0.00
4,071.9	12.10	335.68	4,015.6	509.9	-230.5	-152.0	0.00	0.00	0.00
Terry/Sussex									
4,100.0	12.10	335.68	4,043.1	515.2	-232.9	-153.6	0.00	0.00	0.00
4,200.0	12.10	335.68	4,140.9	534.3	-241.5	-159.3	0.00	0.00	0.00
4,300.0	12.10	335.68	4,238.7	553.4	-250.1	-165.0	0.00	0.00	0.00
4,400.0	12.10	335.68	4,336.4	572.5	-258.8	-170.7	0.00	0.00	0.00
4,500.0	12.10	335.68	4,434.2	591.6	-267.4	-176.4	0.00	0.00	0.00
4,600.0	12.10	335.68	4,532.0	610.7	-276.0	-182.1	0.00	0.00	0.00

Bill Barrett Corp

Planning Report

Database:	Compass	Local Co-ordinate Reference:	Well CVR 5-63-32-25H
Company:	BILL BARRETT CORP	TVD Reference:	KB @ 4602.0ft (Original Well Elev)
Project:	WELD COUNTY, COLORADO	MD Reference:	KB @ 4602.0ft (Original Well Elev)
Site:	CVR 5-63-32-25H	North Reference:	True
Well:	CVR 5-63-32-25H	Survey Calculation Method:	Minimum Curvature
Wellbore:	Wellbore #1		
Design:	Design #1		

Planned Survey									
Measured Depth (ft)	Inclination (°)	Azimuth (°)	Vertical Depth (ft)	+N/-S (ft)	+E/-W (ft)	Vertical Section (ft)	Dogleg Rate (°/100ft)	Build Rate (°/100ft)	Turn Rate (°/100ft)
4,645.7	12.10	335.68	4,576.7	619.4	-280.0	-184.7	0.00	0.00	0.00
Start Drop -1.50									
4,700.0	11.28	335.68	4,629.9	629.5	-284.5	-187.7	1.50	-1.50	0.00
4,800.0	9.78	335.68	4,728.2	646.1	-292.0	-192.6	1.50	-1.50	0.00
4,889.0	8.45	335.68	4,816.1	659.0	-297.8	-196.5	1.50	-1.50	0.00
Shannon									
4,900.0	8.28	335.68	4,826.9	660.4	-298.5	-196.9	1.50	-1.50	0.00
5,000.0	6.78	335.68	4,926.1	672.4	-303.9	-200.5	1.50	-1.50	0.00
5,100.0	5.28	335.68	5,025.5	681.9	-308.2	-203.3	1.50	-1.50	0.00
5,200.0	3.78	335.68	5,125.2	689.1	-311.5	-205.5	1.50	-1.50	0.00
5,300.0	2.28	335.68	5,225.1	693.9	-313.7	-206.9	1.50	-1.50	0.00
5,400.0	0.78	335.68	5,325.0	696.4	-314.8	-207.6	1.50	-1.50	0.00
5,452.1	0.00	0.00	5,377.1	696.7	-314.9	-207.7	1.50	-1.50	0.00
Start 500.0 hold at 5452.1 MD									
5,500.0	0.00	0.00	5,425.0	696.7	-314.9	-207.7	0.00	0.00	0.00
5,600.0	0.00	0.00	5,525.0	696.7	-314.9	-207.7	0.00	0.00	0.00
5,700.0	0.00	0.00	5,625.0	696.7	-314.9	-207.7	0.00	0.00	0.00
5,800.0	0.00	0.00	5,725.0	696.7	-314.9	-207.7	0.00	0.00	0.00
5,900.0	0.00	0.00	5,825.0	696.7	-314.9	-207.7	0.00	0.00	0.00
5,952.1	0.00	0.00	5,877.1	696.7	-314.9	-207.7	0.00	0.00	0.00
Start Build 10.00									
6,000.0	4.79	90.09	5,925.0	696.7	-312.9	-205.7	10.00	10.00	0.00
6,100.0	14.79	90.09	6,023.4	696.7	-295.9	-188.9	10.00	10.00	0.00
6,200.0	24.79	90.09	6,117.3	696.6	-262.1	-155.5	10.00	10.00	0.00
6,243.0	29.10	90.09	6,155.7	696.6	-242.6	-136.2	10.00	10.00	0.00
Sharon Springs									
6,300.0	34.79	90.09	6,204.0	696.5	-212.5	-106.4	10.00	10.00	0.00
6,400.0	44.79	90.09	6,280.8	696.4	-148.5	-43.2	10.00	10.00	0.00
6,420.4	46.83	90.09	6,294.9	696.4	-133.9	-28.8	10.00	10.00	0.00
Niobrara									
6,500.0	54.79	90.09	6,345.2	696.3	-72.3	32.2	10.00	10.00	0.00
6,600.0	64.79	90.09	6,395.5	696.2	14.1	117.5	10.00	10.00	0.00
6,700.0	74.79	90.09	6,430.0	696.0	107.8	210.2	10.00	10.00	0.00
6,800.0	84.79	90.09	6,447.7	695.9	206.1	307.3	10.00	10.00	0.00
6,810.2	85.82	90.09	6,448.5	695.9	216.3	317.4	10.00	10.00	0.00
Top "C" Target									
6,856.0	90.39	90.09	6,450.0	695.8	262.0	362.6	10.00	10.00	0.00
Start 4316.7 hold at 6856.0 MD - 7" Csg									
6,900.0	90.40	90.09	6,449.7	695.7	306.0	406.1	0.01	0.01	0.00
7,000.0	90.40	90.09	6,449.0	695.6	406.0	505.0	0.00	0.00	0.00
7,100.0	90.40	90.09	6,448.3	695.4	506.0	603.8	0.00	0.00	0.00
7,200.0	90.40	90.09	6,447.6	695.3	606.0	702.7	0.00	0.00	0.00
7,300.0	90.40	90.09	6,446.9	695.1	706.0	801.6	0.00	0.00	0.00
7,400.0	90.40	90.09	6,446.2	694.9	806.0	900.4	0.00	0.00	0.00
7,500.0	90.40	90.09	6,445.5	694.8	906.0	999.3	0.00	0.00	0.00
7,600.0	90.40	90.09	6,444.8	694.6	1,006.0	1,098.2	0.00	0.00	0.00
7,700.0	90.40	90.09	6,444.1	694.5	1,106.0	1,197.0	0.00	0.00	0.00
7,800.0	90.40	90.09	6,443.4	694.3	1,206.0	1,295.9	0.00	0.00	0.00
7,900.0	90.40	90.09	6,442.8	694.2	1,306.0	1,394.7	0.00	0.00	0.00
8,000.0	90.40	90.09	6,442.1	694.0	1,406.0	1,493.6	0.00	0.00	0.00
8,100.0	90.40	90.09	6,441.4	693.8	1,506.0	1,592.5	0.00	0.00	0.00
8,200.0	90.40	90.09	6,440.7	693.7	1,606.0	1,691.3	0.00	0.00	0.00
8,300.0	90.40	90.09	6,440.0	693.5	1,706.0	1,790.2	0.00	0.00	0.00

Bill Barrett Corp

Planning Report

Database:	Compass	Local Co-ordinate Reference:	Well CVR 5-63-32-25H
Company:	BILL BARRETT CORP	TVD Reference:	KB @ 4602.0ft (Original Well Elev)
Project:	WELD COUNTY, COLORADO	MD Reference:	KB @ 4602.0ft (Original Well Elev)
Site:	CVR 5-63-32-25H	North Reference:	True
Well:	CVR 5-63-32-25H	Survey Calculation Method:	Minimum Curvature
Wellbore:	Wellbore #1		
Design:	Design #1		

Planned Survey									
Measured Depth (ft)	Inclination (°)	Azimuth (°)	Vertical Depth (ft)	+N/-S (ft)	+E/-W (ft)	Vertical Section (ft)	Dogleg Rate (°/100ft)	Build Rate (°/100ft)	Turn Rate (°/100ft)
8,400.0	90.40	90.09	6,439.3	693.4	1,806.0	1,889.0	0.00	0.00	0.00
8,500.0	90.40	90.09	6,438.6	693.2	1,906.0	1,987.9	0.00	0.00	0.00
8,600.0	90.40	90.09	6,437.9	693.1	2,006.0	2,086.8	0.00	0.00	0.00
8,700.0	90.40	90.09	6,437.2	692.9	2,106.0	2,185.6	0.00	0.00	0.00
8,800.0	90.40	90.09	6,436.5	692.7	2,206.0	2,284.5	0.00	0.00	0.00
8,900.0	90.40	90.09	6,435.8	692.6	2,306.0	2,383.3	0.00	0.00	0.00
9,000.0	90.40	90.09	6,435.1	692.4	2,406.0	2,482.2	0.00	0.00	0.00
9,100.0	90.40	90.09	6,434.4	692.3	2,505.9	2,581.1	0.00	0.00	0.00
9,200.0	90.40	90.09	6,433.7	692.1	2,605.9	2,679.9	0.00	0.00	0.00
9,300.0	90.40	90.09	6,433.0	692.0	2,705.9	2,778.8	0.00	0.00	0.00
9,400.0	90.40	90.09	6,432.3	691.8	2,805.9	2,877.6	0.00	0.00	0.00
9,500.0	90.40	90.09	6,431.6	691.6	2,905.9	2,976.5	0.00	0.00	0.00
9,600.0	90.40	90.09	6,430.9	691.5	3,005.9	3,075.4	0.00	0.00	0.00
9,700.0	90.40	90.09	6,430.2	691.3	3,105.9	3,174.2	0.00	0.00	0.00
9,800.0	90.40	90.09	6,429.5	691.2	3,205.9	3,273.1	0.00	0.00	0.00
9,900.0	90.40	90.09	6,428.8	691.0	3,305.9	3,371.9	0.00	0.00	0.00
10,000.0	90.40	90.09	6,428.2	690.9	3,405.9	3,470.8	0.00	0.00	0.00
10,100.0	90.40	90.09	6,427.5	690.7	3,505.9	3,569.7	0.00	0.00	0.00
10,200.0	90.40	90.09	6,426.8	690.5	3,605.9	3,668.5	0.00	0.00	0.00
10,300.0	90.40	90.09	6,426.1	690.4	3,705.9	3,767.4	0.00	0.00	0.00
10,400.0	90.40	90.09	6,425.4	690.2	3,805.9	3,866.3	0.00	0.00	0.00
10,500.0	90.40	90.09	6,424.7	690.1	3,905.9	3,965.1	0.00	0.00	0.00
10,600.0	90.40	90.09	6,424.0	689.9	4,005.9	4,064.0	0.00	0.00	0.00
10,700.0	90.40	90.09	6,423.3	689.8	4,105.9	4,162.8	0.00	0.00	0.00
10,800.0	90.40	90.09	6,422.6	689.6	4,205.9	4,261.7	0.00	0.00	0.00
10,900.0	90.40	90.09	6,421.9	689.4	4,305.9	4,360.6	0.00	0.00	0.00
11,000.0	90.40	90.09	6,421.2	689.3	4,405.9	4,459.4	0.00	0.00	0.00
11,100.0	90.40	90.09	6,420.5	689.1	4,505.9	4,558.3	0.00	0.00	0.00
11,172.7	90.40	90.09	6,420.0	689.0	4,578.6	4,630.2	0.00	0.00	0.00
TD at 11172.7									

Targets									
Target Name	Dip Angle (°)	Dip Dir. (°)	TVD (ft)	+N/-S (ft)	+E/-W (ft)	Northing (ft)	Easting (ft)	Latitude	Longitude
- hit/miss target									
- Shape									
CVR 5-63-32-25H PBHL	0.00	0.00	6,420.0	688.9	4,578.8	1,374,628.11	3,291,995.79	40° 21' 25.272 N	104° 27' 7.992 W
- plan misses by 0.2ft at 11172.7ft MD (6420.0 TVD, 689.0 N, 4578.6 E)									
- Point									
CVR 5-63-32-25H LP	0.00	0.00	6,450.0	695.8	262.0	1,374,584.77	3,287,679.15	40° 21' 25.344 N	104° 28' 3.756 W
- plan hits target									
- Point									

Bill Barrett Corp

Planning Report

Database:	Compass	Local Co-ordinate Reference:	Well CVR 5-63-32-25H
Company:	BILL BARRETT CORP	TVD Reference:	KB @ 4602.0ft (Original Well Elev)
Project:	WELD COUNTY, COLORADO	MD Reference:	KB @ 4602.0ft (Original Well Elev)
Site:	CVR 5-63-32-25H	North Reference:	True
Well:	CVR 5-63-32-25H	Survey Calculation Method:	Minimum Curvature
Wellbore:	Wellbore #1		
Design:	Design #1		

Formations						
Measured Depth (ft)	Vertical Depth (ft)	Name	Lithology	Dip (°)	Dip Direction (°)	
3,417.0	3,374.0	Pierre (Fox Hills Base)		-0.40	90.09	
4,071.9	4,014.0	Terry/Sussex		-0.40	90.09	
4,889.0	4,814.0	Shannon		-0.40	90.09	
6,243.0	6,154.0	Sharon Springs		-0.40	90.09	
6,420.4	6,294.0	Niobrara		-0.40	90.09	
6,810.2	6,450.0	Top "C" Target		-0.40	90.09	
	6,470.0	Base "C" Target		-0.40	90.09	

Plan Annotations					
Measured Depth (ft)	Vertical Depth (ft)	Local Coordinates			
		+N/-S (ft)	+E/-W (ft)	Comment	
1,000.0	1,000.0	0.0	0.0	Start Build 1.50	
1,806.4	1,800.4	77.3	-34.9	Start 2839.3 hold at 1806.4 MD	
4,645.7	4,576.7	619.4	-280.0	Start Drop -1.50	
5,452.1	5,377.1	696.7	-314.9	Start 500.0 hold at 5452.1 MD	
5,952.1	5,877.1	696.7	-314.9	Start Build 10.00	
6,856.0	6,450.0	695.8	262.0	Start 4316.7 hold at 6856.0 MD	
11,172.7	6,420.0	689.0	4,578.6	TD at 11172.7	