

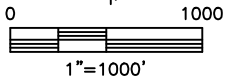
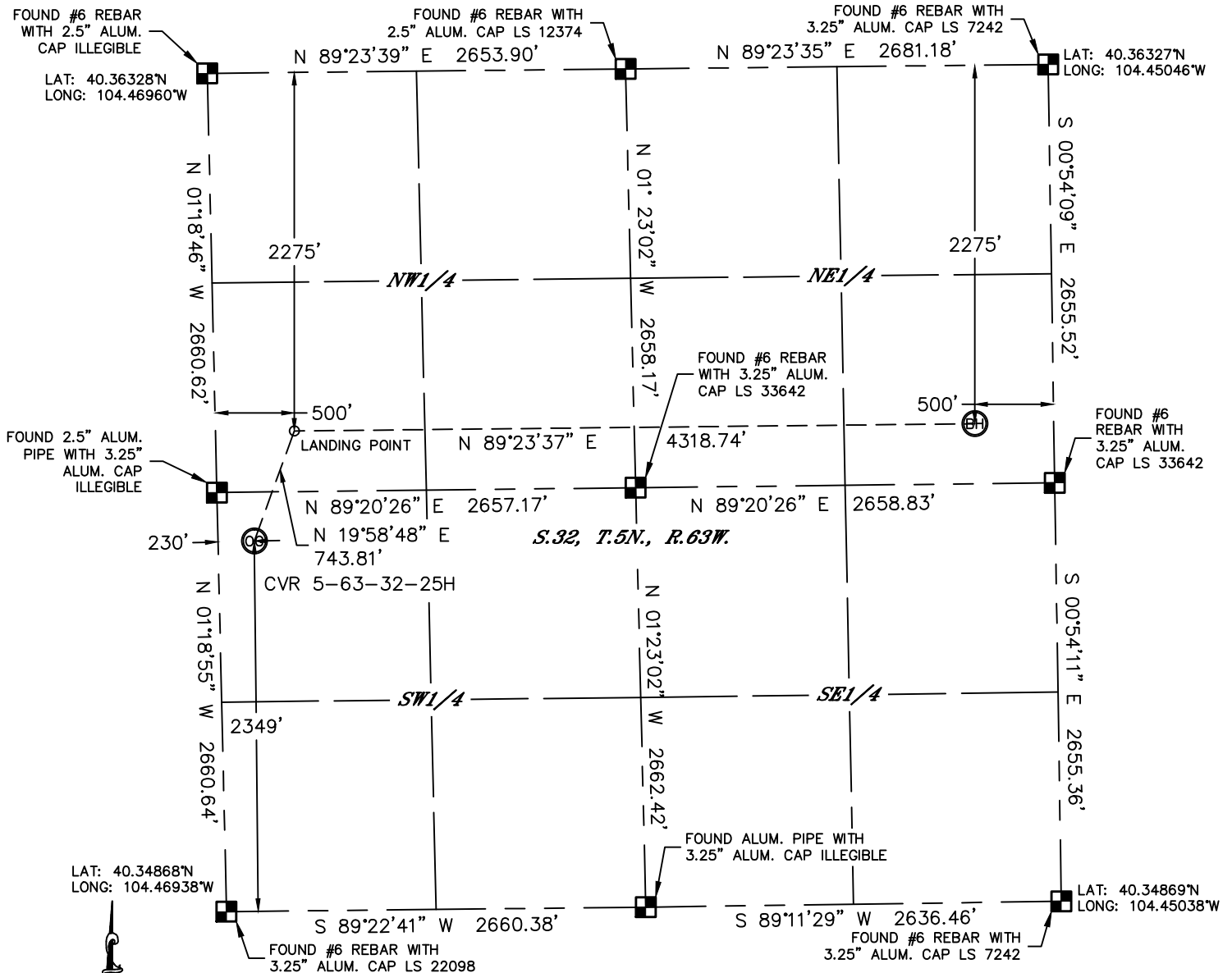


Lat40°, Inc. 1635 Foxtrail Drive, Suite 325 Loveland, CO 970-776-3321

# WELL LOCATION CERTIFICATE

THIS MAP DOES NOT REPRESENT A BOUNDARY SURVEY

SECTION: 32  
TOWNSHIP: 5N  
RANGE: 63W



In accordance with a request from Glenn Berglund with BILL BARRETT CORPORATION Lat40°, Inc. has determined the surface location of the CVR 5-63-32-25H to be 2349' from the SOUTH line and 230' from the WEST line and the bottom hole to be 2275' from the NORTH line and 500' from the EAST line as measured at right angles from the section lines of Section 32, Township 5 North, Range 63 West of the Sixth Principal Meridian, County of Weld, State of Colorado.

I hereby state that this Well Location Certificate was prepared by me, or under my direct supervision, that the fieldwork was completed on 12/13/2012, for and on behalf of BILL BARRETT CORPORATION That this is not a Land Survey Plat or an Improvement Survey Plat, and that it is not to be relied upon for establishment of fence, building, or other future improvement lines.

## NOTE:

- 1) Bearings shown are Grid Bearings of the Colorado State Plane Coordinate System, North Zone, North American Datum 1983/2007. The lineal dimensions as contained herein are based upon the "U.S. Survey Foot."
- 2) Ground elevations are based on an observed GPS elevation (NAVD 1988 DATUM).
- 3) IMPROVEMENTS: See LOCATION DRAWING for all visible improvements within 400' of disturbed area.
- 4) SURFACE USE: CROPLAND
- 5) INSTRUMENT OPERATOR: WYATT HALL

## SURFACE LOCATION

LAT: 40.35513°N (40°21'18.5"N)  
LONG: 104.46865°W (104°28'07.1"W)  
LAT: 40.35515°N (NAD27)  
LONG: 104.46814°W (NAD27)  
PDOP: 1.7  
ELEV: 4578'  
1/4, 1/4: NW1/4SW1/4  
NEAREST PROPERTY LINE: 230' WEST  
LANDING POINT  
LAT: 40.35704°N (40°21'25.3"N)  
LONG: 104.46771°W (104°28'03.8"W)  
LAT: 40.35706°N (NAD27)  
LONG: 104.46720°W (NAD27)

## BOTTOM HOLE

LAT: 40.35702°N (40°21'25.3"N)  
LONG: 104.45222°W (104°27'08.0"W)  
LAT: 40.35704°N (NAD27)  
LONG: 104.45171°W (NAD27)

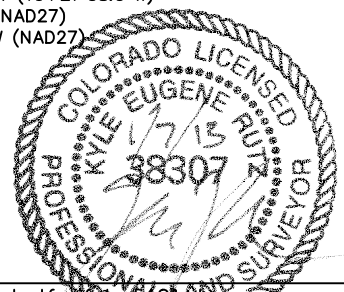
## NOTE

According to Colorado law, you must commence any legal action based upon any defect in this W.L.C. within three years after you discover such defect. In no event, may any action based upon any defect in this survey be commenced more than ten years after the date of the certificate shown hereon. (13-80-105 C.R.S.)

## LEGEND

- = ALIQUOT MONUMENT AS DESCRIBED
- = CALCULATED POSITION

Kyle E. Rutz—On behalf of Lat40°, Inc.  
Colorado Licensed Professional  
Land Surveyor No. 38307  
DATE: rev 1/7/2013  
PROJECT#: 2012174



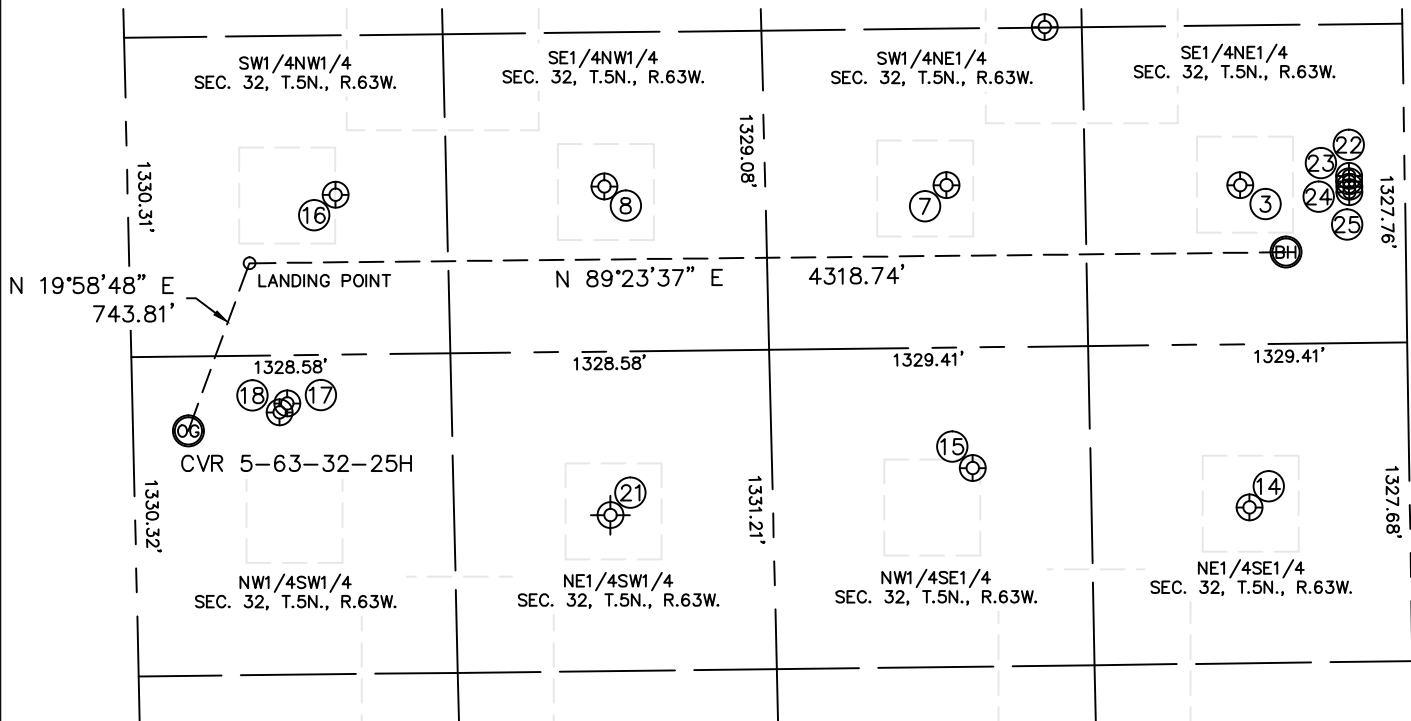


Lat40°, Inc. 1635 Foxtrail Drive, Suite 325 Loveland, CO 970-776-3321

# SITE SKETCH

CVR 5-63-32-25H

SECTION: 32  
TOWNSHIP: 5N  
RANGE: 63W



③

SIEBRING 42-32  
SE1/4NE1/4  
1994' FNL  
687' FEL  
LAT-40.35780°N  
LONG-104.45289°W  
PDOP: 1.7  
ELEV: 4571'

⑦

SIEBRING 32-32  
SW1/4NE1/4  
1981' FNL  
1909' FEL  
LAT-40.35784°N  
LONG-104.45728°W  
PDOP: 1.6  
ELEV: 4573'

⑧

VAN WYKE 22-32  
SE1/4NW1/4  
1972' FNL  
1986' FWL  
LAT-40.35786°N  
LONG-104.46239°W  
PDOP: 2.2  
ELEV: 4576'

⑭

HERGENREDER 32-9  
NE1/4SE1/4  
1977' FSL  
669' FEL  
LAT-40.35411°N  
LONG-104.45281°W  
PDOP: 2.1  
ELEV: 4570'

⑮

HERGENREDER BB 32-10DI  
NW1/4SE1/4  
2157' FSL  
1819' FEL  
LAT-40.35460°N  
LONG-104.45694°W  
PDOP: 1.7  
ELEV: 4569'

⑮

CAMPBELL BB 32-5  
SW1/4NW1/4  
1994' FNL  
865' FWL  
LAT-40.35781°N  
LONG-104.46641°W  
PDOP: 1.6  
ELEV: 4577'

⑮

CENTENNIAL-REIN  
23-32  
NW1/4SW1/4  
2460' FSL  
645' FWL  
LAT-40.35543°N  
LONG-104.46717°W  
PDOP: 1.7  
ELEV: 4578'

⑮

CENTENNIAL-REIN 13-32  
NW1/4SW1/4  
2423' FSL  
612' FWL  
LAT-40.35533°N  
LONG-104.46728°W  
PDOP: 1.6  
ELEV: 4578'

⑮

REIN 11-32  
(PLUGGED AND ABANDONED)  
NE1/4SW1/4  
1980' FSL (COGCC)  
1980' FWL (COGCC)  
LAT-40.35407°N (COGCC)  
LONG-104.46248°W (COGCC)  
PDOP: -N/A  
ELEV: 4573' (COGCC)

⑮

SIEBRING 5-63-32-16H  
SE1/1NE1/4  
1960' FNL  
232' FEL  
LAT-40.35789°N  
LONG-104.45126°W  
PDOP: 1.9  
ELEV: 4570'

⑮

SIEBRING 5-63-32-17H  
SE1/1NE1/4  
1983' FNL  
232' FEL  
LAT-40.35782°N  
LONG-104.45126°W  
PDOP: 1.6  
ELEV: 4570'

⑮

SIEBRING 5-63-32-32H  
SE1/1NE1/4  
2005' FNL  
232' FEL  
LAT-40.35776°N  
LONG-104.45126°W  
PDOP: 1.6  
ELEV: 4570'

⑮

SIEBRING 5-63-32-48H  
SE1/1NE1/4  
2028' FNL  
232' FEL  
LAT-40.35770°N  
LONG-104.45126°W  
PDOP: 1.3  
ELEV: 4570'

