

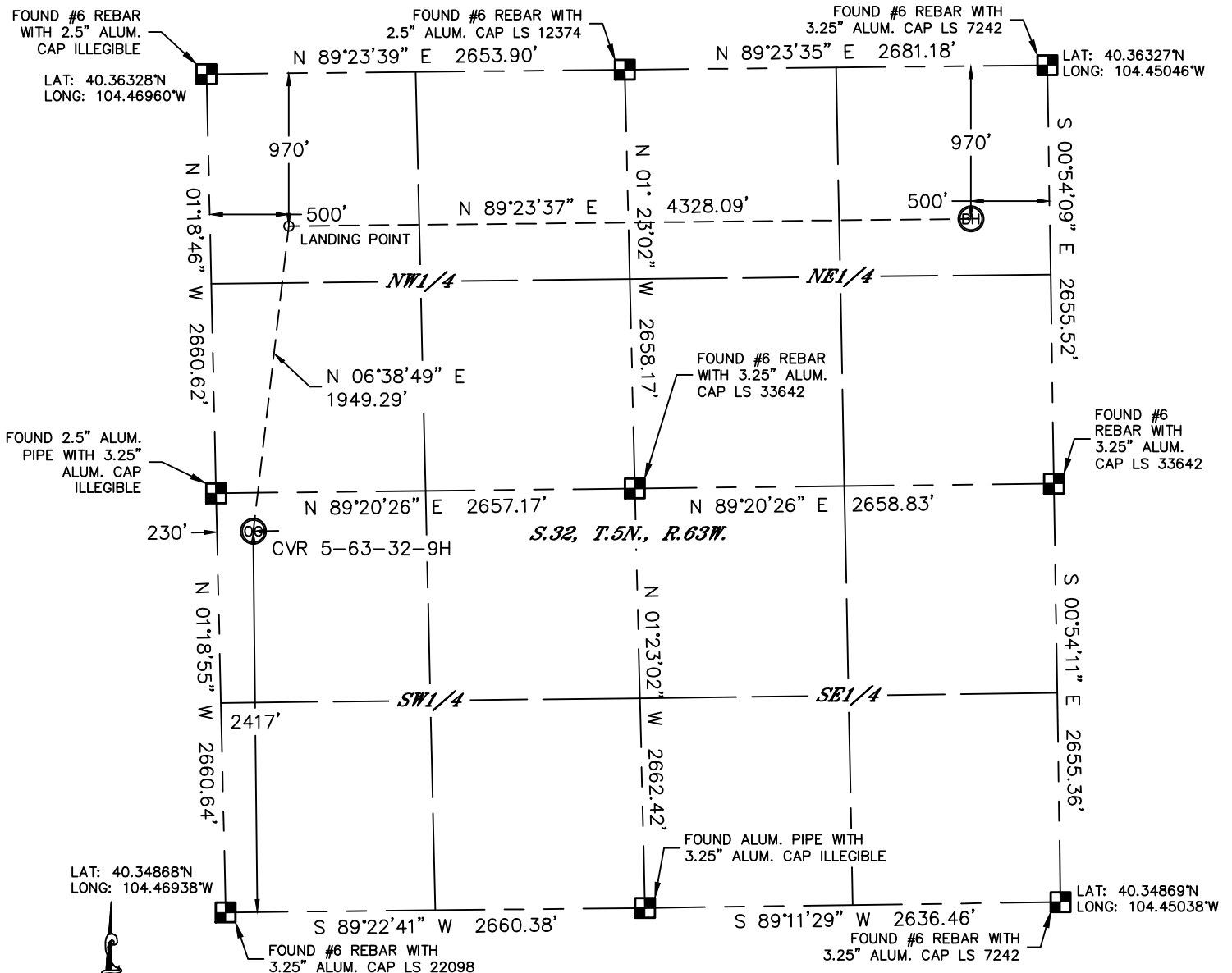


Lat40°, Inc. 1635 Foxtrail Drive, Suite 325 Loveland, CO 970-776-3321

WELL LOCATION CERTIFICATE

THIS MAP DOES NOT REPRESENT A BOUNDARY SURVEY

SECTION: 32
TOWNSHIP: 5N
RANGE: 63W



In accordance with a request from Glenn Berglund with BILL BARRETT CORPORATION Lat40°, Inc. has determined the surface location of the CVR 5-63-32-9H to be 2417' from the SOUTH line and 230' from the WEST line and the bottom hole to be 970' from the NORTH line and 500' from the EAST line as measured at right angles from the section lines of Section 32, Township 5 North, Range 63 West of the Sixth Principal Meridian, County of Weld, State of Colorado.

I hereby state that this Well Location Certificate was prepared by me, or under my direct supervision, that the fieldwork was completed on 12/13/2012, for and on behalf of BILL BARRETT CORPORATION That this is not a Land Survey Plat or an Improvement Survey Plat, and that it is not to be relied upon for establishment of fence, building, or other future improvement lines.

NOTE:

- 1) Bearings shown are Grid Bearings of the Colorado State Plane Coordinate System, North Zone, North American Datum 1983/2007. The lineal dimensions as contained herein are based upon the "U.S. Survey Foot."
- 2) Ground elevations are based on an observed GPS elevation (NAVD 1988 DATUM).
- 3) IMPROVEMENTS: See LOCATION DRAWING for all visible improvements within 400' of disturbed area.
- 4) SURFACE USE: CROPLAND
- 5) INSTRUMENT OPERATOR: WYATT HALL

NOTE

According to Colorado law, you must commence any legal action based upon any defect in this W.L.C. within three years after you discover such defect. In no event, may any action based upon any defect in this survey be commenced more than ten years after the date of the certificate shown hereon. (13-80-105 C.R.S.)

SURFACE LOCATION

LAT: 40.35531°N (40°21'19.1"N)
LONG: 104.46865°W (104°28'07.1"W)
LAT: 40.35533°N (NAD27)
LONG: 104.46814°W (NAD27)
PDOP: 2.2
ELEV: 4578'

1/4, 1/4: NW1/4SW1/4

NEAREST PROPERTY LINE: 230' WEST

LANDING POINT

LAT: 40.36062°N (40°21'38.2"N)
LONG: 104.46776°W (104°28'03.9"W)
LAT: 40.36064°N (NAD27)
LONG: 104.46725°W (NAD27)

BOTTOM HOLE

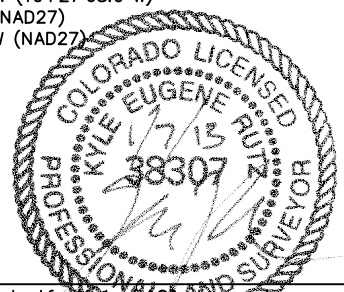
LAT: 40.36060°N (40°21'38.2"N)
LONG: 104.45224°W (104°27'08.0"W)
LAT: 40.36062°N (NAD27)
LONG: 104.45172°W (NAD27)

LEGEND

- = ALIQUOT MONUMENT AS DESCRIBED
- = CALCULATED POSITION

Kyle E. Rutz—On behalf of Lat40°, Inc.
Colorado Licensed Professional
Land Surveyor No. 38307

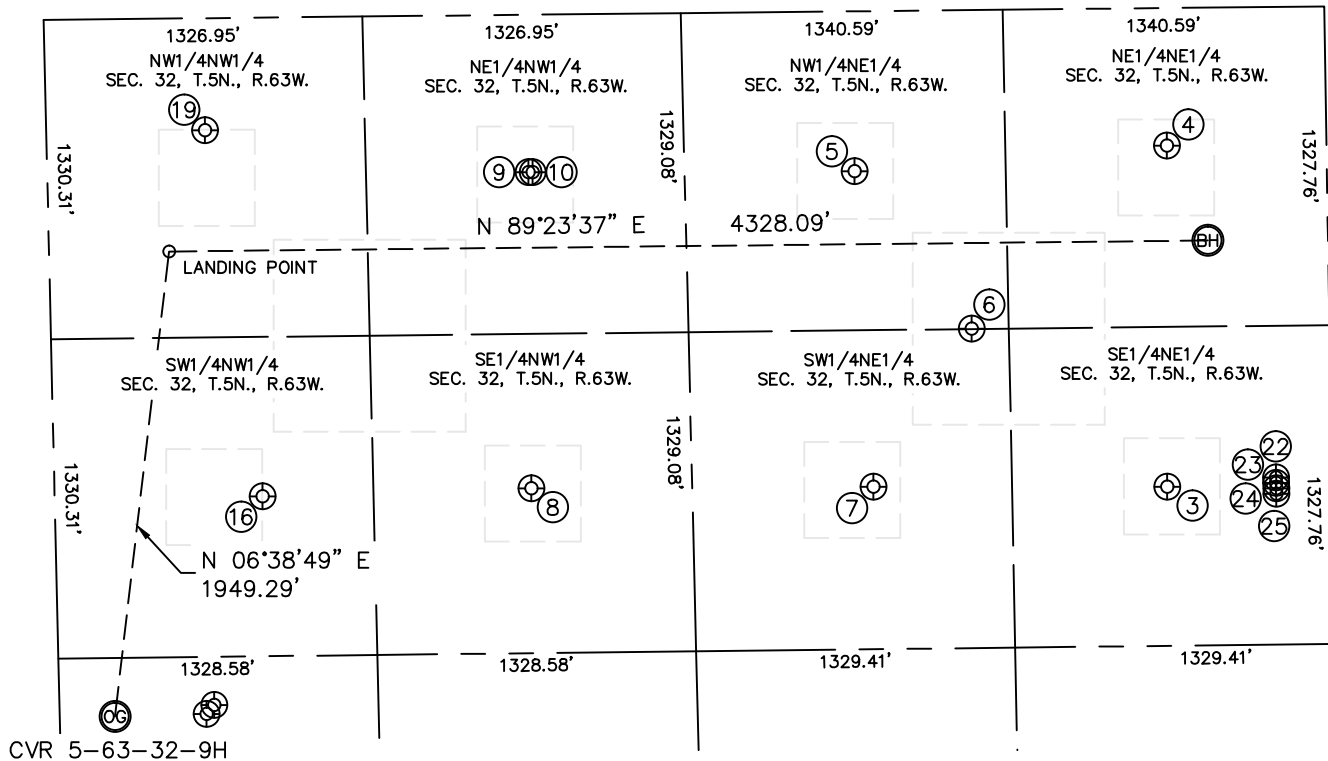
DATE: rev 1/7/2013
PROJECT#: 2012174



SITE SKETCH

CVR 5-63-32-9H

SECTION: 32
TOWNSHIP: 5N
RANGE: 63W



- | | | | | |
|---|---|---|---|--|
| ③ | ④ | ⑤ | ⑥ | ⑦ |
| SIEBRING 42-32
SE1/4NE1/4
1994' FNL
687' FEL
LAT-40.35780"N
LONG-104.45289"W
PDOP: 1.7
ELEV: 4571' | SIEBRING 41-32
NE1/4NE1/4
574' FNL
664' FEL
LAT-40.36169"N
LONG-104.45283"W
PDOP: 2.6
ELEV: 4571' | SIEBRING 31-32
NW1/4NE1/4
666' FNL
1968' FEL
LAT-40.36144"N
LONG-104.45751"W
PDOP: 2.5
ELEV: 4573' | SIEBRING CNE-32
NW1/4NE1/4
1327' FNL
1490' FEL
LAT-40.35963"N
LONG-104.45578"W
PDOP: 1.6
ELEV: 4571' | SIEBRING 32-32
SW1/4NE1/4
1981' FNL
1909' FEL
LAT-40.35784"N
LONG-104.45728"W
PDOP: 1.6
ELEV: 4573' |
| ⑧ | ⑨ | ⑩ | ⑪ | ⑫ |
| VAN WYKE 22-32
SE1/4NW1/4
1972' FNL
1986' FWL
LAT-40.35786"N
LONG-104.46239"W
PDOP: 2.2
ELEV: 4576' | VAN WYKE 42-32
NE1/4NW1/4
655' FNL
2004' FWL
LAT-40.36148"N
LONG-104.46238"W
PDOP: 1.4
ELEV: 4575' | VAN WYKE 31-32
NE1/4NW1/4
655' FNL
2021' FWL
LAT-40.36148"N
LONG-104.46232"W
PDOP: 1.4
ELEV: 4574' | CAMPBELL BB 32-5
SW1/4NW1/4
1994' FNL
865' FWL
LAT-40.35781"N
LONG-104.46641"W
PDOP: 1.6
ELEV: 4577' | CAMPBELL BB 32-4
NW1/4NW1/4
466' FNL
661' FWL
LAT-40.36200"N
LONG-104.46720"W
PDOP: 2.1
ELEV: 4573' |
| ⑬ | ⑭ | ⑮ | ⑯ | |
| SIEBRING 5-63-32-16H
SE1/1NE1/4
1960' FNL
232' FEL
LAT-40.35789"N
LONG-104.45126"W
PDOP: 1.9
ELEV: 4570' | SIEBRING 5-63-32-17H
SE1/1NE1/4
1983' FNL
232' FEL
LAT-40.35782"N
LONG-104.45126"W
PDOP: 1.6
ELEV: 4570' | SIEBRING 5-63-32-32H
SE1/1NE1/4
2005' FNL
232' FEL
LAT-40.35776"N
LONG-104.45126"W
PDOP: 1.6
ELEV: 4570' | SIEBRING 5-63-32-48H
SE1/1NE1/4
2028' FNL
232' FEL
LAT-40.35770"N
LONG-104.45126"W
PDOP: 1.3
ELEV: 4570' | |

