

# **BILL BARRETT CORP**

**WELD COUNTY, COLORADO**

**CVR 5-63-32-9H**

**CVR 5-63-32-9H**

**Wellbore #1**

**Plan: Design #1**

## **Standard Planning Report**

**10 January, 2013**



**Bill Barrett Corporation**

**SITE DETAILS:** CVR 5-63-32-9H  
Wattenberg

Site Latitude: 40° 21' 19.116 N  
Site Longitude: 104° 28' 7.140 W

**COMPANY DETAILS: BILL BARRETT CORP**

Calculation Method: Minimum Curvature  
Error System: ISCWSA  
Scan Method: Closest Approach 3D  
Error Surface: Elliptical Conic  
Warning Method: Error Ratio

Positional Uncertainty: 0.0  
Convergence: 0.67  
Local North: True

**WELL DETAILS:** CVR 5-63-32-9H

Ground Level: 4578.0  
Easting: 3287424.53  
Latitude: 40° 21' 19.116 N  
Longitude: 104° 28' 7.140 W  
Slot

+N/-S +E/-W  
0.0 0.0

Northing  
1373951.53

Easting  
3287424.53

Latitude  
40° 21' 19.116 N

Longitude  
104° 28' 7.140 W

**WELLBORE TARGET DETAILS (LAT/LONG)**

Name	TVD	+N/-S	+E/-W	Latitude	Longitude	Shape
CVR 5-63-32-9H PBHL	6430.0	1927.5	4573.0	40° 21' 38.160 N	104° 27' 8.064 W	Point
CVR 5-63-32-9H LP	6490.0	1934.4	248.0	40° 21' 38.232 N	104° 28' 3.936 W	Point

**SECTION DETAILS**

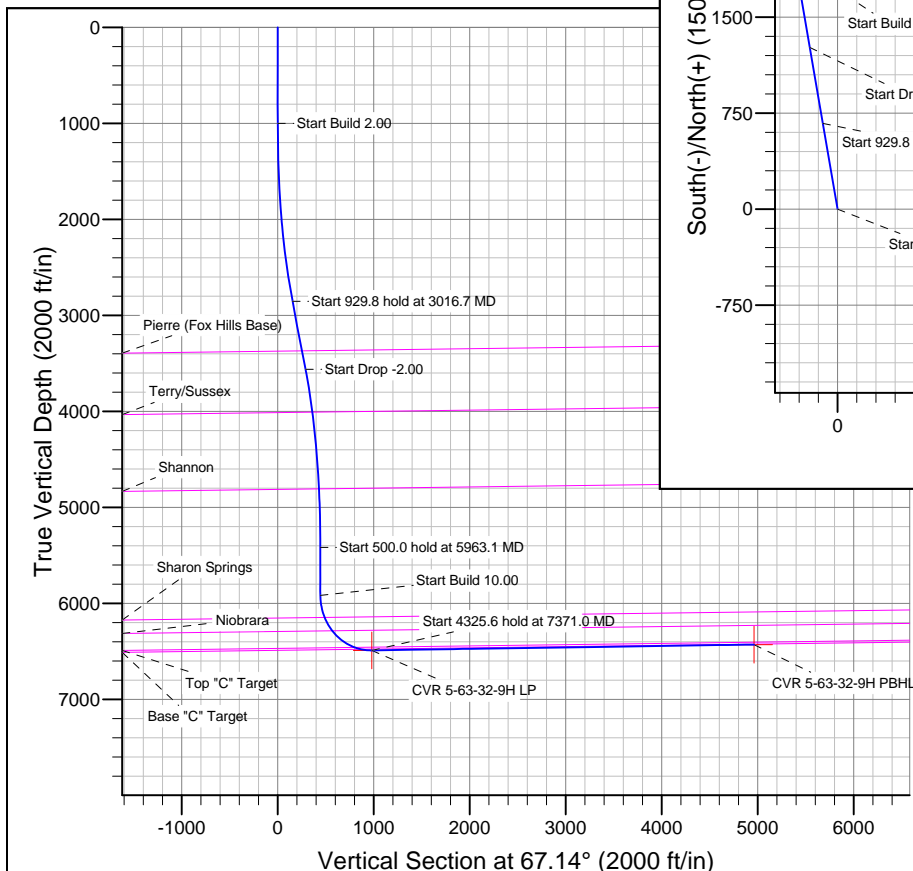
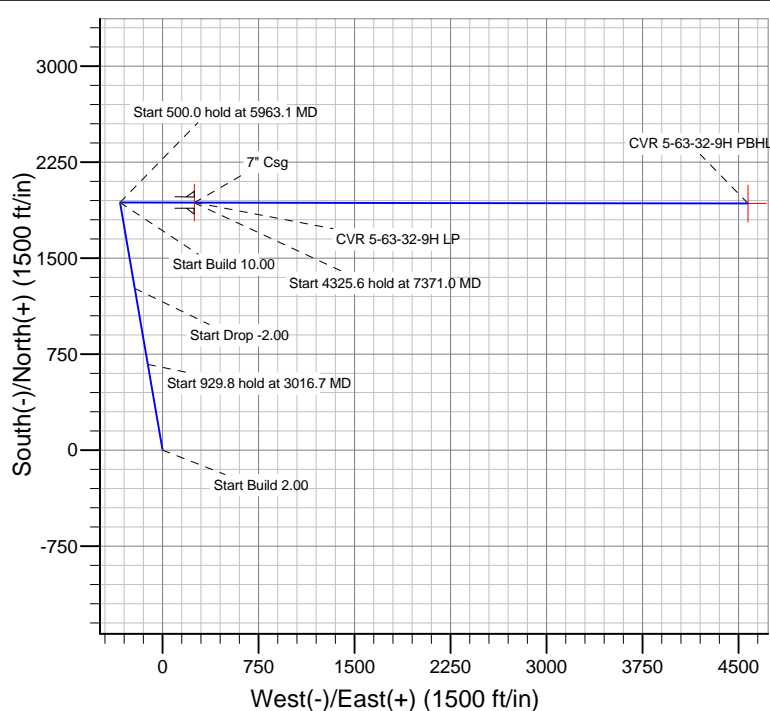
Sec	MD	Inc	Azi	TVD	+N/-S	+E/-W	DLeg	TFace	VSec	Target
1	0.0	0.00	0.00	0.0	0.0	0.0	0.00	0.00	0.0	
2	1000.0	0.00	0.00	1000.0	0.0	0.0	0.00	0.00	0.0	
3	3016.7	40.33	350.23	2854.2	671.1	-115.5	2.00	350.23	154.2	
4	3946.4	40.33	350.23	3562.9	1264.2	-217.6	0.00	0.00	290.5	
5	5963.1	0.00	0.00	5417.1	1935.3	-333.1	2.00	180.00	444.7	
6	6463.1	0.00	0.00	5917.1	1935.3	-333.1	0.00	0.00	444.7	
7	7371.0	90.79	90.09	6490.0	1934.4	247.8	10.00	90.09	979.7	
8	11696.7	90.79	90.09	6430.0	1927.5	4573.0	0.00	0.00	4962.7	CVR 5-63-32-9H PBHL

**FORMATION TOP DETAILS**

TVDPath	MDPath	Formation
3376.7	3702.1	Pierre (Fox Hills Base)
4017.9	4501.2	Terry/Sussex
4818.6	5360.1	Shannon
6158.0	6711.7	Sharon Springs
6296.7	6878.0	Niobrara
6468.8	7206.6	Top "C" Target
6487.4	7308.0	Base "C" Target

**CASING DETAILS**

TVD	MD	Name	Size
6490.0	7371.0	7" Csg	7



Azimuths to True North  
Magnetic North: 8.49°

Magnetic Field  
Strength: 52975.7snT  
Dip Angle: 67.01°  
Date: 1/9/2013  
Model: IGRF2010

# Bill Barrett Corp

## Planning Report

<b>Database:</b>	Compass	<b>Local Co-ordinate Reference:</b>	Well CVR 5-63-32-9H
<b>Company:</b>	BILL BARRETT CORP	<b>TVD Reference:</b>	KB @ 4602.0ft (Original Well Elev)
<b>Project:</b>	WELD COUNTY, COLORADO	<b>MD Reference:</b>	KB @ 4602.0ft (Original Well Elev)
<b>Site:</b>	CVR 5-63-32-9H	<b>North Reference:</b>	True
<b>Well:</b>	CVR 5-63-32-9H	<b>Survey Calculation Method:</b>	Minimum Curvature
<b>Wellbore:</b>	Wellbore #1		
<b>Design:</b>	Design #1		

<b>Project</b>	WELD COUNTY, COLORADO		
<b>Map System:</b>	US State Plane 1983	<b>System Datum:</b>	Mean Sea Level
<b>Geo Datum:</b>	North American Datum 1983		
<b>Map Zone:</b>	Colorado Northern Zone		

Site		CVR 5-63-32-9H			
Site Position:		Northing:	1,373,951.53 ft	Latitude:	40° 21' 19.116 N
From:	Lat/Long	Easting:	3,287,424.53 ft	Longitude:	104° 28' 7.140 W
Position Uncertainty:	0.0 ft	Slot Radius:	"	Grid Convergence:	0.67 °

Well	CVR 5-63-32-9H					
Well Position	+N/-S	0.0 ft	Northing:	1,373,951.53 ft	Latitude:	40° 21' 19.116 N
	+E/-W	0.0 ft	Easting:	3,287,424.53 ft	Longitude:	104° 28' 7.140 W
Position Uncertainty		0.0 ft	Wellhead Elevation:	ft	Ground Level:	4,578.0 ft

<b>Wellbore</b>	Wellbore #1				
<b>Magnetics</b>	<b>Model Name</b>	<b>Sample Date</b>	<b>Declination (°)</b>	<b>Dip Angle (°)</b>	<b>Field Strength (nT)</b>
	IGRF2010	1/9/2013	8.49	67.01	52,976

<b>Design</b>	Design #1			
<b>Audit Notes:</b>				
<b>Version:</b>	<b>Phase:</b>	PLAN	<b>Tie On Depth:</b>	0.0
<b>Vertical Section:</b>	<b>Depth From (TVD) (ft)</b>	<b>+N/-S (ft)</b>	<b>+E/-W (ft)</b>	<b>Direction (°)</b>
	0.0	0.0	0.0	67.14

<b>Plan Sections</b>										
Measured Depth (ft)	Inclination (°)	Azimuth (°)	Vertical Depth (ft)	+N/-S (ft)	+E/-W (ft)	Dogleg Rate (°/100ft)	Build Rate (°/100ft)	Turn Rate (°/100ft)	TFO (°)	Target
0.0	0.00	0.00	0.0	0.0	0.0	0.00	0.00	0.00	0.00	
1,000.0	0.00	0.00	1,000.0	0.0	0.0	0.00	0.00	0.00	0.00	
3,016.7	40.33	350.23	2,854.2	671.1	-115.5	2.00	2.00	0.00	350.23	
3,946.4	40.33	350.23	3,562.9	1,264.2	-217.6	0.00	0.00	0.00	0.00	
5,963.1	0.00	0.00	5,417.1	1,935.3	-333.1	2.00	-2.00	0.00	180.00	
6,463.1	0.00	0.00	5,917.1	1,935.3	-333.1	0.00	0.00	0.00	0.00	
7,371.0	90.79	90.09	6,490.0	1,934.4	247.8	10.00	10.00	0.00	90.09	
11,696.7	90.79	90.09	6,430.0	1,927.5	4,573.0	0.00	0.00	0.00	0.00	CVR 5-63-32-9H PBH

# Bill Barrett Corp

## Planning Report

<b>Database:</b>	Compass	<b>Local Co-ordinate Reference:</b>	Well CVR 5-63-32-9H
<b>Company:</b>	BILL BARRETT CORP	<b>TVD Reference:</b>	KB @ 4602.0ft (Original Well Elev)
<b>Project:</b>	WELD COUNTY, COLORADO	<b>MD Reference:</b>	KB @ 4602.0ft (Original Well Elev)
<b>Site:</b>	CVR 5-63-32-9H	<b>North Reference:</b>	True
<b>Well:</b>	CVR 5-63-32-9H	<b>Survey Calculation Method:</b>	Minimum Curvature
<b>Wellbore:</b>	Wellbore #1		
<b>Design:</b>	Design #1		

Planned Survey									
Measured Depth (ft)	Inclination (°)	Azimuth (°)	Vertical Depth (ft)	+N/-S (ft)	+E/-W (ft)	Vertical Section (ft)	Dogleg Rate (°/100ft)	Build Rate (°/100ft)	Turn Rate (°/100ft)
0.0	0.00	0.00	0.0	0.0	0.0	0.0	0.00	0.00	0.00
100.0	0.00	0.00	100.0	0.0	0.0	0.0	0.00	0.00	0.00
200.0	0.00	0.00	200.0	0.0	0.0	0.0	0.00	0.00	0.00
300.0	0.00	0.00	300.0	0.0	0.0	0.0	0.00	0.00	0.00
400.0	0.00	0.00	400.0	0.0	0.0	0.0	0.00	0.00	0.00
500.0	0.00	0.00	500.0	0.0	0.0	0.0	0.00	0.00	0.00
600.0	0.00	0.00	600.0	0.0	0.0	0.0	0.00	0.00	0.00
700.0	0.00	0.00	700.0	0.0	0.0	0.0	0.00	0.00	0.00
800.0	0.00	0.00	800.0	0.0	0.0	0.0	0.00	0.00	0.00
900.0	0.00	0.00	900.0	0.0	0.0	0.0	0.00	0.00	0.00
1,000.0	0.00	0.00	1,000.0	0.0	0.0	0.0	0.00	0.00	0.00
Start Build 2.0000									
1,100.0	2.00	350.23	1,100.0	1.7	-0.3	0.4	2.00	2.00	0.00
1,200.0	4.00	350.23	1,199.8	6.9	-1.2	1.6	2.00	2.00	0.00
1,300.0	6.00	350.23	1,299.5	15.5	-2.7	3.6	2.00	2.00	0.00
1,400.0	8.00	350.23	1,398.7	27.5	-4.7	6.3	2.00	2.00	0.00
1,500.0	10.00	350.23	1,497.5	42.9	-7.4	9.9	2.00	2.00	0.00
1,600.0	12.00	350.23	1,595.6	61.7	-10.6	14.2	2.00	2.00	0.00
1,700.0	14.00	350.23	1,693.1	83.9	-14.4	19.3	2.00	2.00	0.00
1,800.0	16.00	350.23	1,789.6	109.4	-18.8	25.1	2.00	2.00	0.00
1,900.0	18.00	350.23	1,885.3	138.2	-23.8	31.8	2.00	2.00	0.00
2,000.0	20.00	350.23	1,979.8	170.3	-29.3	39.1	2.00	2.00	0.00
2,100.0	22.00	350.23	2,073.2	205.6	-35.4	47.2	2.00	2.00	0.00
2,200.0	24.00	350.23	2,165.2	244.1	-42.0	56.1	2.00	2.00	0.00
2,300.0	26.00	350.23	2,255.8	285.7	-49.2	65.7	2.00	2.00	0.00
2,400.0	28.00	350.23	2,344.9	330.5	-56.9	75.9	2.00	2.00	0.00
2,500.0	30.00	350.23	2,432.4	378.2	-65.1	86.9	2.00	2.00	0.00
2,600.0	32.00	350.23	2,518.1	429.0	-73.8	98.6	2.00	2.00	0.00
2,700.0	34.00	350.23	2,602.0	482.7	-83.1	110.9	2.00	2.00	0.00
2,800.0	36.00	350.23	2,683.9	539.2	-92.8	123.9	2.00	2.00	0.00
2,900.0	38.00	350.23	2,763.7	598.5	-103.0	137.5	2.00	2.00	0.00
3,000.0	40.00	350.23	2,841.5	660.5	-113.7	151.8	2.00	2.00	0.00
3,016.7	40.33	350.23	2,854.2	671.1	-115.5	154.2	2.00	2.00	0.00
Start 929.7683 hold at 3016.6594 MD									
3,100.0	40.33	350.23	2,917.7	724.3	-124.7	166.4	0.00	0.00	0.00
3,200.0	40.33	350.23	2,993.9	788.1	-135.6	181.1	0.00	0.00	0.00
3,300.0	40.33	350.23	3,070.2	851.8	-146.6	195.7	0.00	0.00	0.00
3,400.0	40.33	350.23	3,146.4	915.6	-157.6	210.4	0.00	0.00	0.00
3,500.0	40.33	350.23	3,222.6	979.4	-168.6	225.1	0.00	0.00	0.00
3,600.0	40.33	350.23	3,298.9	1,043.2	-179.6	239.7	0.00	0.00	0.00
3,700.0	40.33	350.23	3,375.1	1,107.0	-190.5	254.4	0.00	0.00	0.00
3,702.1	40.33	350.23	3,376.7	1,108.3	-190.8	254.7	0.00	0.00	0.00
Pierre (Fox Hills Base)									
3,800.0	40.33	350.23	3,451.3	1,170.8	-201.5	269.0	0.00	0.00	0.00
3,900.0	40.33	350.23	3,527.5	1,234.5	-212.5	283.7	0.00	0.00	0.00
3,946.4	40.33	350.23	3,562.9	1,264.2	-217.6	290.5	0.00	0.00	0.00
Start Drop -2.0000									
4,000.0	39.26	350.23	3,604.1	1,298.0	-223.4	298.3	2.00	-2.00	0.00
4,100.0	37.26	350.23	3,682.6	1,359.0	-233.9	312.3	2.00	-2.00	0.00
4,200.0	35.26	350.23	3,763.2	1,417.3	-243.9	325.7	2.00	-2.00	0.00
4,300.0	33.26	350.23	3,845.9	1,472.7	-253.5	338.4	2.00	-2.00	0.00
4,400.0	31.26	350.23	3,930.4	1,525.3	-262.6	350.5	2.00	-2.00	0.00
4,500.0	29.26	350.23	4,016.8	1,575.0	-271.1	361.9	2.00	-2.00	0.00
4,501.2	29.24	350.23	4,017.9	1,575.6	-271.2	362.1	2.00	-2.00	0.00

# Bill Barrett Corp

## Planning Report

<b>Database:</b>	Compass	<b>Local Co-ordinate Reference:</b>	Well CVR 5-63-32-9H
<b>Company:</b>	BILL BARRETT CORP	<b>TVD Reference:</b>	KB @ 4602.0ft (Original Well Elev)
<b>Project:</b>	WELD COUNTY, COLORADO	<b>MD Reference:</b>	KB @ 4602.0ft (Original Well Elev)
<b>Site:</b>	CVR 5-63-32-9H	<b>North Reference:</b>	True
<b>Well:</b>	CVR 5-63-32-9H	<b>Survey Calculation Method:</b>	Minimum Curvature
<b>Wellbore:</b>	Wellbore #1		
<b>Design:</b>	Design #1		

Planned Survey									
Measured Depth (ft)	Inclination (°)	Azimuth (°)	Vertical Depth (ft)	+N/-S (ft)	+E/-W (ft)	Vertical Section (ft)	Dogleg Rate (°/100ft)	Build Rate (°/100ft)	Turn Rate (°/100ft)
<b>Terry/Sussex</b>									
4,600.0	27.26	350.23	4,104.9	1,621.7	-279.1	372.7	2.00	-2.00	0.00
4,700.0	25.26	350.23	4,194.6	1,665.3	-286.6	382.7	2.00	-2.00	0.00
4,800.0	23.26	350.23	4,285.7	1,705.8	-293.6	392.0	2.00	-2.00	0.00
4,900.0	21.26	350.23	4,378.3	1,743.1	-300.0	400.6	2.00	-2.00	0.00
5,000.0	19.26	350.23	4,472.1	1,777.2	-305.9	408.4	2.00	-2.00	0.00
5,100.0	17.26	350.23	4,567.0	1,808.1	-311.2	415.5	2.00	-2.00	0.00
5,200.0	15.26	350.23	4,663.0	1,835.7	-316.0	421.8	2.00	-2.00	0.00
5,300.0	13.26	350.23	4,759.9	1,860.0	-320.2	427.4	2.00	-2.00	0.00
5,360.1	12.06	350.23	4,818.6	1,873.0	-322.4	430.4	2.00	-2.00	0.00
<b>Shannon</b>									
5,400.0	11.26	350.23	4,857.7	1,880.9	-323.8	432.2	2.00	-2.00	0.00
5,500.0	9.26	350.23	4,956.0	1,898.5	-326.8	436.3	2.00	-2.00	0.00
5,600.0	7.26	350.23	5,055.0	1,912.6	-329.2	439.5	2.00	-2.00	0.00
5,700.0	5.26	350.23	5,154.4	1,923.4	-331.1	442.0	2.00	-2.00	0.00
5,800.0	3.26	350.23	5,254.1	1,930.7	-332.3	443.7	2.00	-2.00	0.00
5,900.0	1.26	350.23	5,354.0	1,934.6	-333.0	444.6	2.00	-2.00	0.00
5,963.1	0.00	0.00	5,417.1	1,935.3	-333.1	444.7	2.00	-2.00	0.00
<b>Start 500.0000 hold at 5963.0871 MD</b>									
6,000.0	0.00	0.00	5,454.0	1,935.3	-333.1	444.7	0.00	0.00	0.00
6,100.0	0.00	0.00	5,554.0	1,935.3	-333.1	444.7	0.00	0.00	0.00
6,200.0	0.00	0.00	5,654.0	1,935.3	-333.1	444.7	0.00	0.00	0.00
6,300.0	0.00	0.00	5,754.0	1,935.3	-333.1	444.7	0.00	0.00	0.00
6,400.0	0.00	0.00	5,854.0	1,935.3	-333.1	444.7	0.00	0.00	0.00
6,463.1	0.00	0.00	5,917.1	1,935.3	-333.1	444.7	0.00	0.00	0.00
<b>Start Build 10.0000</b>									
6,500.0	3.69	90.09	5,954.0	1,935.3	-331.9	445.8	10.00	10.00	0.00
6,600.0	13.69	90.09	6,052.7	1,935.2	-316.8	459.7	10.00	10.00	0.00
6,700.0	23.69	90.09	6,147.3	1,935.2	-284.8	489.2	10.00	10.00	0.00
6,711.7	24.86	90.09	6,158.0	1,935.2	-280.0	493.6	10.00	10.00	0.00
<b>Sharon Springs</b>									
6,800.0	33.69	90.09	6,235.0	1,935.1	-236.9	533.3	10.00	10.00	0.00
6,878.0	41.49	90.09	6,296.7	1,935.0	-189.3	577.1	10.00	10.00	0.00
<b>Niobrara</b>									
6,900.0	43.69	90.09	6,312.9	1,935.0	-174.4	590.8	10.00	10.00	0.00
7,000.0	53.69	90.09	6,378.8	1,934.9	-99.4	659.9	10.00	10.00	0.00
7,100.0	63.69	90.09	6,430.7	1,934.8	-14.1	738.5	10.00	10.00	0.00
7,200.0	73.69	90.09	6,467.0	1,934.6	79.0	824.2	10.00	10.00	0.00
7,206.6	74.35	90.09	6,468.8	1,934.6	85.3	830.0	10.00	10.00	0.00
<b>Top "C" Target</b>									
7,300.0	83.69	90.09	6,486.6	1,934.5	176.9	914.4	10.00	10.00	0.00
7,308.0	84.49	90.09	6,487.4	1,934.5	184.8	921.7	10.00	10.00	0.00
<b>Base "C" Target</b>									
7,371.0	90.79	90.09	6,490.0	1,934.4	247.8	979.6	10.00	10.00	0.00
<b>Start 4325.6478 hold at 7371.0389 MD - 7" Csg</b>									
7,400.0	90.79	90.09	6,489.6	1,934.3	276.8	1,006.3	0.01	0.01	0.00
7,500.0	90.79	90.09	6,488.2	1,934.2	376.7	1,098.4	0.00	0.00	0.00
7,600.0	90.79	90.09	6,486.8	1,934.0	476.7	1,190.5	0.00	0.00	0.00
7,700.0	90.79	90.09	6,485.5	1,933.8	576.7	1,282.6	0.00	0.00	0.00
7,800.0	90.79	90.09	6,484.1	1,933.7	676.7	1,374.6	0.00	0.00	0.00
7,900.0	90.79	90.09	6,482.7	1,933.5	776.7	1,466.7	0.00	0.00	0.00
8,000.0	90.79	90.09	6,481.3	1,933.4	876.7	1,558.8	0.00	0.00	0.00
8,100.0	90.79	90.09	6,479.9	1,933.2	976.7	1,650.9	0.00	0.00	0.00

# Bill Barrett Corp

## Planning Report

<b>Database:</b>	Compass	<b>Local Co-ordinate Reference:</b>	Well CVR 5-63-32-9H
<b>Company:</b>	BILL BARRETT CORP	<b>TVD Reference:</b>	KB @ 4602.0ft (Original Well Elev)
<b>Project:</b>	WELD COUNTY, COLORADO	<b>MD Reference:</b>	KB @ 4602.0ft (Original Well Elev)
<b>Site:</b>	CVR 5-63-32-9H	<b>North Reference:</b>	True
<b>Well:</b>	CVR 5-63-32-9H	<b>Survey Calculation Method:</b>	Minimum Curvature
<b>Wellbore:</b>	Wellbore #1		
<b>Design:</b>	Design #1		

Planned Survey									
Measured Depth (ft)	Inclination (°)	Azimuth (°)	Vertical Depth (ft)	+N/-S (ft)	+E/-W (ft)	Vertical Section (ft)	Dogleg Rate (°/100ft)	Build Rate (°/100ft)	Turn Rate (°/100ft)
8,200.0	90.79	90.09	6,478.5	1,933.0	1,076.7	1,743.0	0.00	0.00	0.00
8,300.0	90.79	90.09	6,477.1	1,932.9	1,176.7	1,835.0	0.00	0.00	0.00
8,400.0	90.79	90.09	6,475.7	1,932.7	1,276.7	1,927.1	0.00	0.00	0.00
8,500.0	90.79	90.09	6,474.4	1,932.6	1,376.6	2,019.2	0.00	0.00	0.00
8,600.0	90.79	90.09	6,473.0	1,932.4	1,476.6	2,111.3	0.00	0.00	0.00
8,700.0	90.79	90.09	6,471.6	1,932.3	1,576.6	2,203.3	0.00	0.00	0.00
8,800.0	90.79	90.09	6,470.2	1,932.1	1,676.6	2,295.4	0.00	0.00	0.00
8,900.0	90.79	90.09	6,468.8	1,931.9	1,776.6	2,387.5	0.00	0.00	0.00
9,000.0	90.79	90.09	6,467.4	1,931.8	1,876.6	2,479.6	0.00	0.00	0.00
9,100.0	90.79	90.09	6,466.0	1,931.6	1,976.6	2,571.7	0.00	0.00	0.00
9,200.0	90.79	90.09	6,464.6	1,931.5	2,076.6	2,663.7	0.00	0.00	0.00
9,300.0	90.79	90.09	6,463.3	1,931.3	2,176.6	2,755.8	0.00	0.00	0.00
9,400.0	90.79	90.09	6,461.9	1,931.2	2,276.6	2,847.9	0.00	0.00	0.00
9,500.0	90.79	90.09	6,460.5	1,931.0	2,376.6	2,940.0	0.00	0.00	0.00
9,600.0	90.79	90.09	6,459.1	1,930.8	2,476.5	3,032.1	0.00	0.00	0.00
9,700.0	90.79	90.09	6,457.7	1,930.7	2,576.5	3,124.1	0.00	0.00	0.00
9,800.0	90.79	90.09	6,456.3	1,930.5	2,676.5	3,216.2	0.00	0.00	0.00
9,900.0	90.79	90.09	6,454.9	1,930.4	2,776.5	3,308.3	0.00	0.00	0.00
10,000.0	90.79	90.09	6,453.5	1,930.2	2,876.5	3,400.4	0.00	0.00	0.00
10,100.0	90.79	90.09	6,452.2	1,930.1	2,976.5	3,492.4	0.00	0.00	0.00
10,200.0	90.79	90.09	6,450.8	1,929.9	3,076.5	3,584.5	0.00	0.00	0.00
10,300.0	90.79	90.09	6,449.4	1,929.7	3,176.5	3,676.6	0.00	0.00	0.00
10,400.0	90.79	90.09	6,448.0	1,929.6	3,276.5	3,768.7	0.00	0.00	0.00
10,500.0	90.79	90.09	6,446.6	1,929.4	3,376.5	3,860.8	0.00	0.00	0.00
10,600.0	90.79	90.09	6,445.2	1,929.3	3,476.4	3,952.8	0.00	0.00	0.00
10,700.0	90.79	90.09	6,443.8	1,929.1	3,576.4	4,044.9	0.00	0.00	0.00
10,800.0	90.79	90.09	6,442.4	1,929.0	3,676.4	4,137.0	0.00	0.00	0.00
10,900.0	90.79	90.09	6,441.1	1,928.8	3,776.4	4,229.1	0.00	0.00	0.00
11,000.0	90.79	90.09	6,439.7	1,928.6	3,876.4	4,321.2	0.00	0.00	0.00
11,100.0	90.79	90.09	6,438.3	1,928.5	3,976.4	4,413.2	0.00	0.00	0.00
11,200.0	90.79	90.09	6,436.9	1,928.3	4,076.4	4,505.3	0.00	0.00	0.00
11,300.0	90.79	90.09	6,435.5	1,928.2	4,176.4	4,597.4	0.00	0.00	0.00
11,400.0	90.79	90.09	6,434.1	1,928.0	4,276.4	4,689.5	0.00	0.00	0.00
11,500.0	90.79	90.09	6,432.7	1,927.8	4,376.4	4,781.5	0.00	0.00	0.00
11,600.0	90.79	90.09	6,431.3	1,927.7	4,476.3	4,873.6	0.00	0.00	0.00
11,696.7	90.79	90.09	6,430.0	1,927.5	4,573.0	4,962.7	0.00	0.00	0.00
TD at 11696.6867									

Targets									
Target Name	Dip Angle (°)	Dip Dir. (°)	TVD (ft)	+N/-S (ft)	+E/-W (ft)	Northing (ft)	Easting (ft)	Latitude	Longitude
- hit/miss target									
- Shape									
CVR 5-63-32-9H PBHL	0.00	0.00	6,430.0	1,927.5	4,573.0	1,375,932.13	3,291,974.81	40° 21' 38.160 N	104° 27' 8.064 W
- plan hits target									
- Point									
CVR 5-63-32-9H LP	0.00	0.00	6,490.0	1,934.4	248.0	1,375,888.69	3,287,650.03	40° 21' 38.232 N	104° 28' 3.936 W
- plan misses by 0.1ft at 7371.3ft MD (6490.0 TVD, 1934.4 N, 248.0 E)									
- Point									

# Bill Barrett Corp

## Planning Report

<b>Database:</b>	Compass	<b>Local Co-ordinate Reference:</b>	Well CVR 5-63-32-9H
<b>Company:</b>	BILL BARRETT CORP	<b>TVD Reference:</b>	KB @ 4602.0ft (Original Well Elev)
<b>Project:</b>	WELD COUNTY, COLORADO	<b>MD Reference:</b>	KB @ 4602.0ft (Original Well Elev)
<b>Site:</b>	CVR 5-63-32-9H	<b>North Reference:</b>	True
<b>Well:</b>	CVR 5-63-32-9H	<b>Survey Calculation Method:</b>	Minimum Curvature
<b>Wellbore:</b>	Wellbore #1		
<b>Design:</b>	Design #1		

Formations						
Measured Depth (ft)	Vertical Depth (ft)	Name	Lithology	Dip (°)	Dip Direction (°)	
3,702.1	3,374.0	Pierre (Fox Hills Base)		-0.81	90.09	
4,501.2	4,014.0	Terry/Sussex		-0.81	90.09	
5,360.1	4,814.0	Shannon		-0.81	90.09	
6,711.7	6,154.0	Sharon Springs		-0.81	90.09	
6,878.0	6,294.0	Niobrara		-0.81	90.09	
7,206.6	6,470.0	Top "C" Target		-0.81	90.09	
7,308.0	6,490.0	Base "C" Target		-0.81	90.09	

Plan Annotations					
Measured Depth (ft)	Vertical Depth (ft)	Local Coordinates			
		+N/-S (ft)	+E/-W (ft)	Comment	
1,000.0	1,000.0	0.0	0.0	Start Build 2.0000	
3,016.7	2,854.2	671.1	-115.5	Start 929.7683 hold at 3016.6594 MD	
3,946.4	3,562.9	1,264.2	-217.6	Start Drop -2.0000	
5,963.1	5,417.1	1,935.3	-333.1	Start 500.0000 hold at 5963.0871 MD	
6,463.1	5,917.1	1,935.3	-333.1	Start Build 10.0000	
7,371.0	6,490.0	1,934.4	247.8	Start 4325.6478 hold at 7371.0389 MD	
11,696.7	6,430.0	1,927.5	4,573.0	TD at 11696.6867	