

GREAT WESTERN OIL & GAS COMPANY

LOCATION DRAWING DETAIL FOR

NEW CACHE FH #8-14D, #17-28D, #8-13D,
#8-12D, #8-32D & #8-33D
(OFF-SITE TANK PAD)

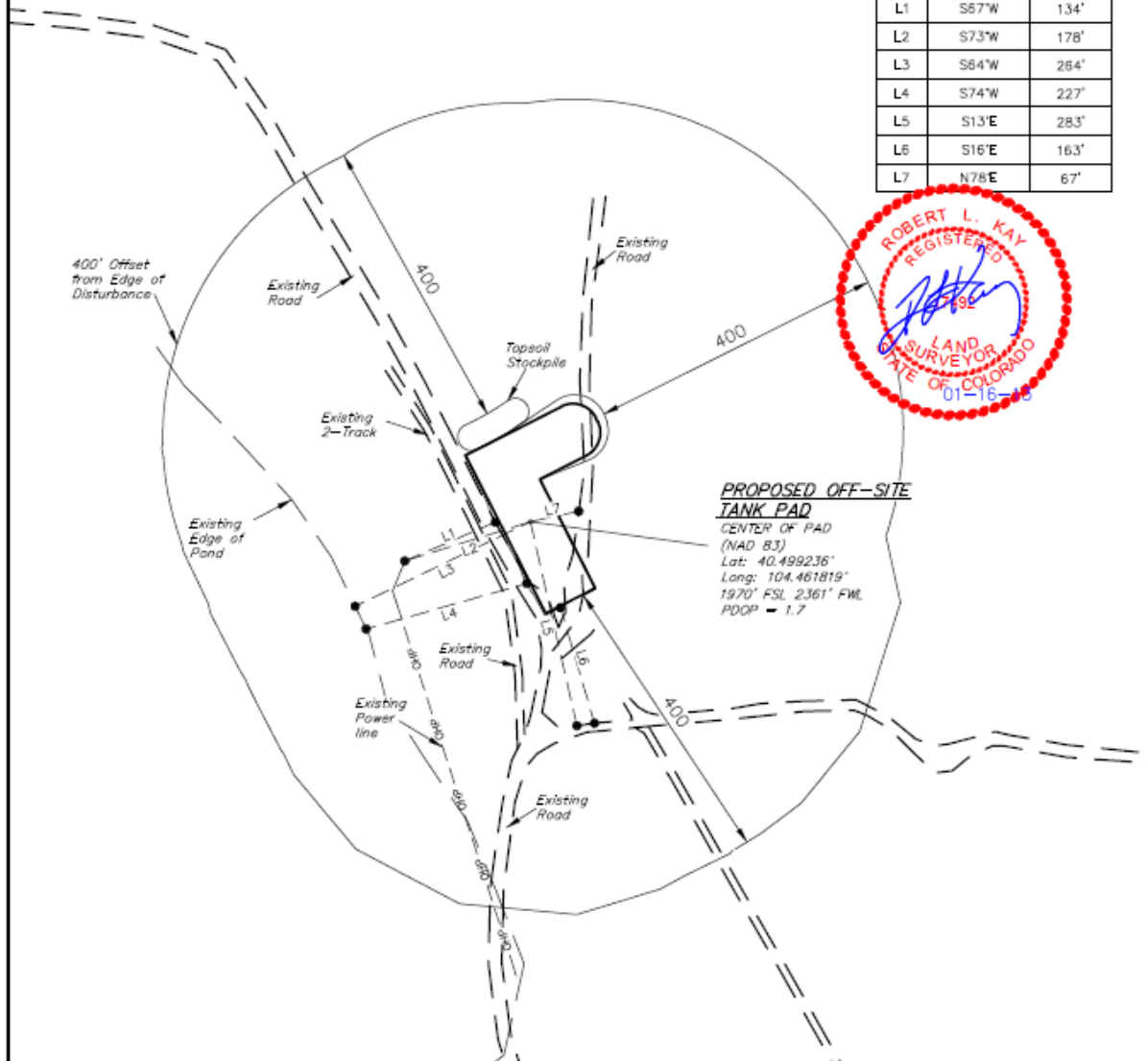
SECTION 8, T6N, R63W, 6th P.M.
NE 1/4 SW 1/4

FIGURE #3A

SCALE: 1" = 200'
DATE: 01-16-12
DRAWN BY: B.D.H.



LINE TABLE		
LINE	DIRECTION	LENGTH
L1	S67°W	134'
L2	S73°W	178'
L3	S64°W	264'
L4	S74°W	227'
L5	S13°E	283'
L6	S16°E	163'
L7	N78°E	67'



UINTAH ENGINEERING & LAND SURVEYING
85 So. 200 East • Vernal, Utah 84078 • (435) 789-1017