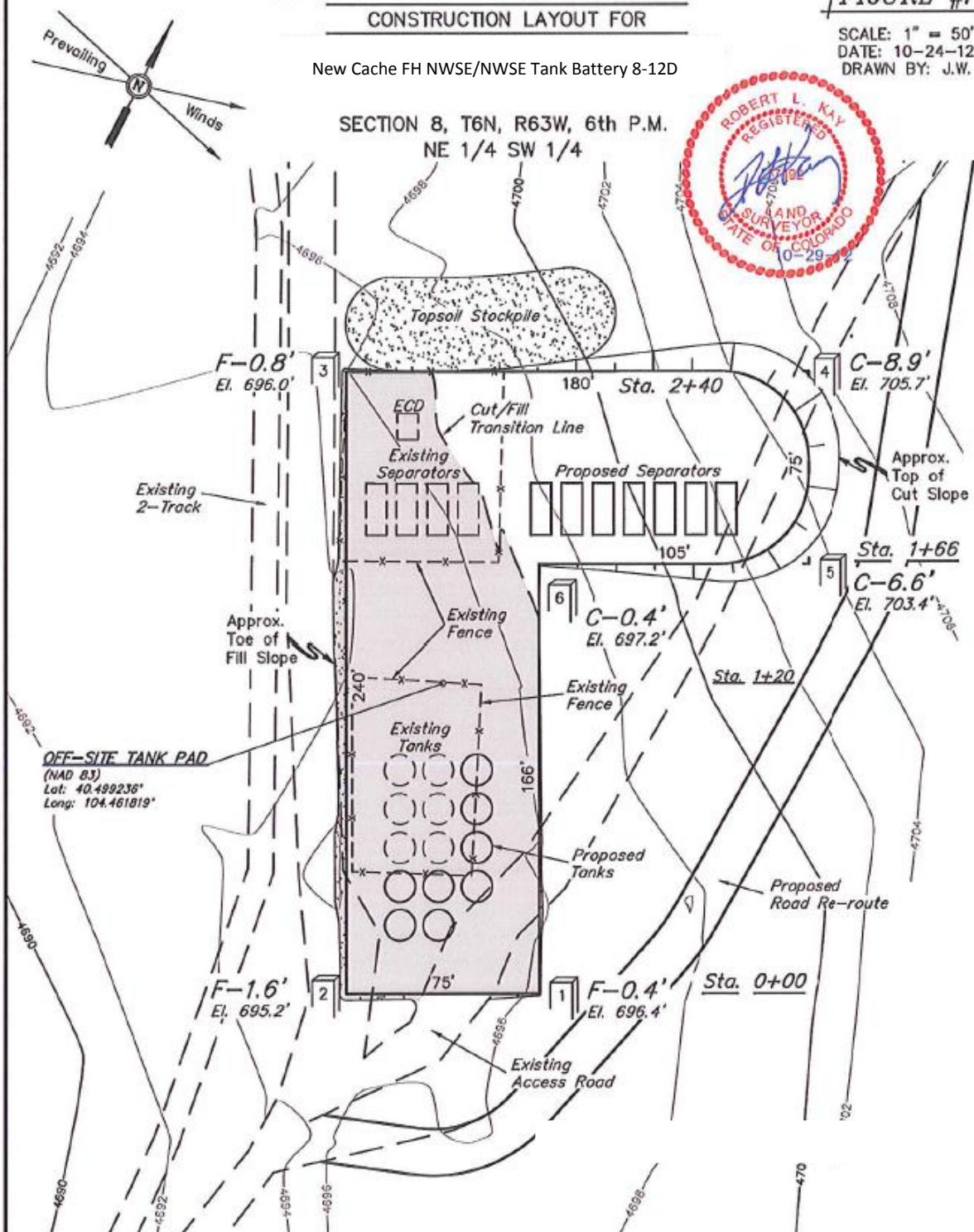


FIGURE #1

SCALE: 1" = 50'
DATE: 10-24-12
DRAWN BY: J.W.



FINISHED GRADE ELEV. AT CENTER OF TANK PAD = 4696.8'

UINTAH ENGINEERING & LAND SURVEYING
86 So. 200 East • Vernal, Utah 84078 • (435) 789-1017

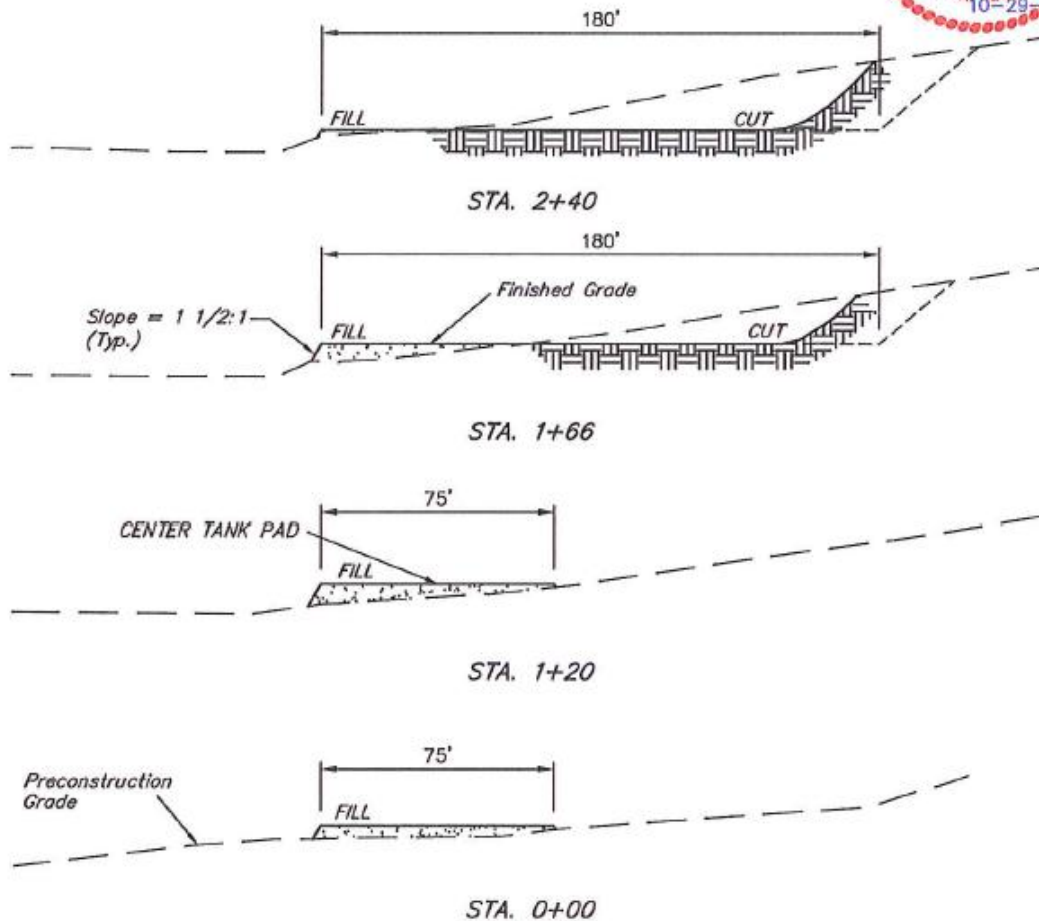
1" = 20'
X-Section
Scale
1" = 50'
DATE: 10-24-12
DRAWN BY: J.W.

GREAT WESTERN OIL & GAS COMPANY CONSTRUCTION LAYOUT CROSS SECTIONS FOR

New Cache FH NWSE/NWSE Tank Battery 8-12D

SECTION 8, T6N, R63W, 6th P.M.
NE 1/4 SW 1/4

FIGURE #2



APPROXIMATE ACREAGES
SITE DISTURBANCE = ± 0.739 ACRES
ROAD RE-ROUTE DISTURBANCE = ± 0.375 ACRES
TOTAL = ± 1.114 ACRES

* NOTE:
FILL QUANTITY INCLUDES
5% FOR COMPACTION

APPROXIMATE YARDAGES

(6") Topsoil Stripping = 530 Cu. Yds.
Remaining Location = 1,250 Cu. Yds.
TOTAL CUT = 1,780 CU. YDS.
FILL = 1,250 CU. YDS.

EXCESS MATERIAL = 530 Cu. Yds.
Topsoil = 530 Cu. Yds.
EXCESS UNBALANCE = 0 Cu. Yds.
(After Interim Rehabilitation)

UINTAH ENGINEERING & LAND SURVEYING
85 So. 200 East • Vernal, Utah 84078 • (435) 788-1017