

T2N, R97W, 6th P.M.

R  
97  
W

R  
96  
W

WEST - 5280.00' (G.L.O.)

NORTH - 2640.00' (G.L.O.)

500'00"54"E - 2641.27' (Meas.)

N00°01'W - 5280.00' (G.L.O.)

25

1987 Alum. Cap,  
0.4' High,  
Pile of Stones,  
Steel Post  
Lat: 40.112961°  
Long: 108.217172°

AHU WYATT #25-43 SWD  
Elev. Ungraded Ground = 5819'

1959'

441'

N89°50'W - 2637.36' (G.L.O.)

N89°54'42"W - 2638.91' (Meas.)

1987 Alum. Cap,  
0.6' High,  
Pile of Stones,  
Steel Post  
Lat: 40.105725°  
Long: 108.226606°

1987 Alum. Cap,  
0.2' High,  
Pile of Stones,  
Steel Post  
Lat: 40.105711°  
Long: 108.217175°

PDOP = 1.2

LEGEND:

└─┘ = 90° SYMBOL

● = PROPOSED WELL HEAD.

▲ = SECTION CORNERS LOCATED.

KOCH EXPLORATION COMPANY

Well location, AHU WYATT #25-43 SWD, located as shown in the SW 1/4 SE 1/4 of Section 25, T2N, R97W, 6th P.M., Rio Blanco County, Colorado.

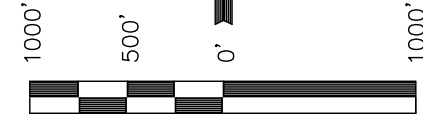
BASIS OF ELEVATION

SPOT ELEVATION AT A BRIDGE LOCATED IN THE SE 1/4 OF SECTION 34, T2N, R97W, 6th P.M. TAKEN FROM THE BARCUS CREEK SE, QUADRANGLE, COLORADO, RIO BLANCO COUNTY, 7.5 MINUTE QUAD. (TOPOGRAPHIC MAP) PUBLISHED BY THE UNITED STATES DEPARTMENT OF THE INTERIOR, GEOLOGICAL SURVEY. SAID ELEVATION IS MARKED AS BEING 5700 FEET.

BASIS OF BEARINGS

BASIS OF BEARINGS IS A G.P.S. OBSERVATION.

NOTE:  
SEE ADDENDUM TO LEGAL PLAT FOR  
EXISTING IMPROVEMENTS WITHIN 400'  
OF THE PROPOSED WELL DISTURBANCE.



SCALE

CERTIFICATE

THIS IS TO CERTIFY THAT THE ABOVE PLAT WAS PREPARED FROM FIELD NOTES OF ACTUAL SURVEYS MADE BY ME OR UNDER MY SUPERVISION AND THAT THE SAME ARE TRUE AND CORRECT TO THE BEST OF MY KNOWLEDGE AND BELIEF.

ROBERT L. KAY  
REGISTERED LAND SURVEYOR  
REGISTRATION NO. 17492  
STATE OF UTAH  
05-10-12

REV: 05-10-12

UINTAH ENGINEERING & LAND SURVEYING  
85 SOUTH 200 EAST - VERNAL, UTAH 84078  
(435) 789-1017

SCALE 1" = 1000'	DATE SURVEYED: 04-30-12	DATE DRAWN: 05-07-12
PARTY B.H. M.M. K.O.	REFERENCES G.L.O. PLAT	
WEATHER WARM	FILE KOCH EXPLORATION COMPANY	

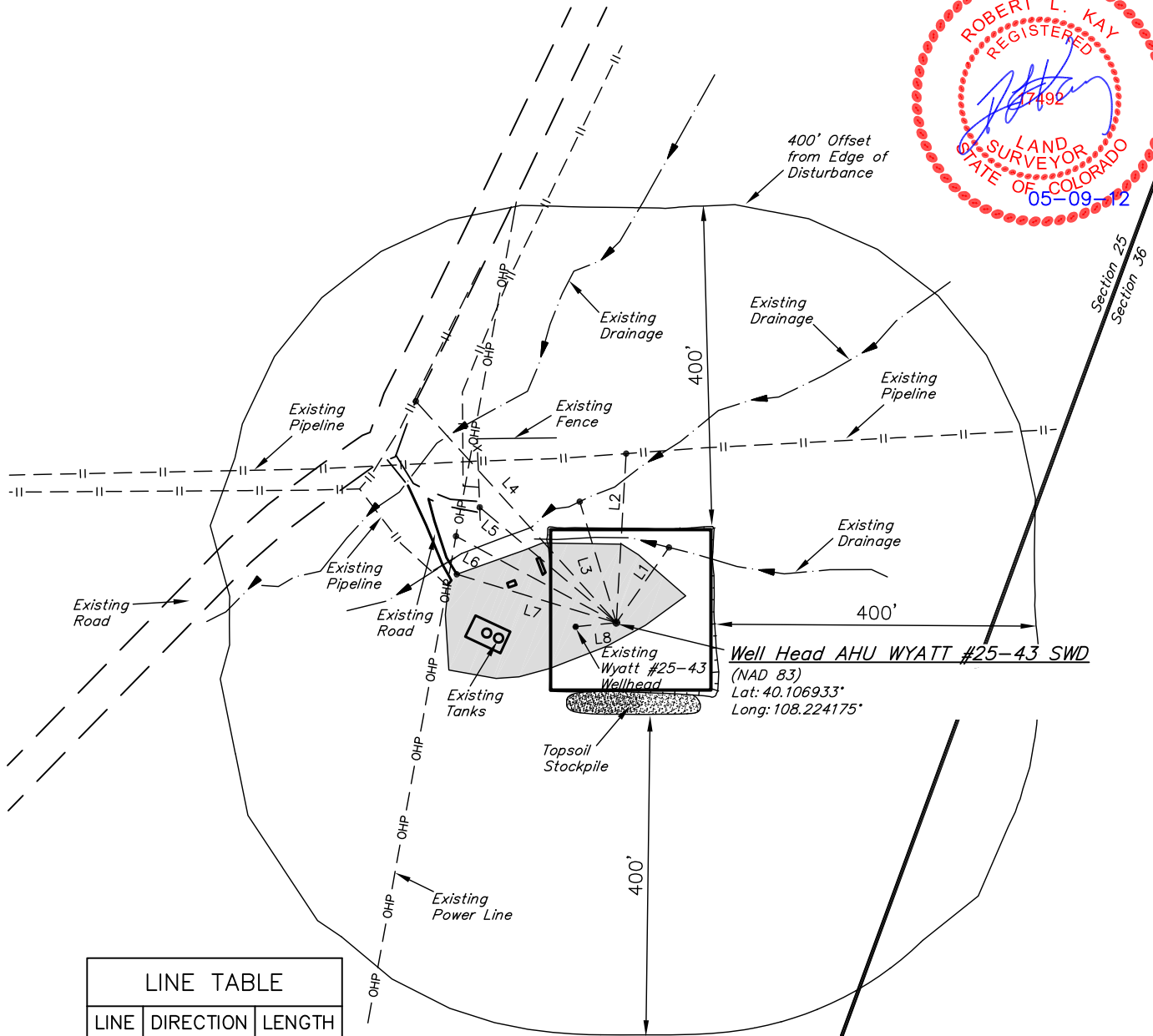
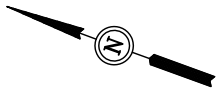
NAD 83 (SURFACE LOCATION)	
LATITUDE = 40°06'24.96" (40.106933)	
LONGITUDE = 108°13'27.03" (108.224175)	
NAD 27 (SURFACE LOCATION)	
LATITUDE = 40°06'25.07" (40.106964)	
LONGITUDE = 108°13'24.72" (108.223533)	

# KOCH EXPLORATION COMPANY

## ADDENDUM TO LEGAL PLAT FOR

AHU WYATT #25-43 SWD  
SECTION 25, T2N, R97W, 6th P.M.  
441' FSL 1959' FEL

SCALE: 1" = 200'  
DATE: 05-08-12  
DRAWN BY: K.O.



LINE TABLE		
LINE	DIRECTION	LENGTH
L1	S75°E	115'
L2	N73°E	211'
L3	N53°E	158'
L4	N28°E	373'
L5	N20°E	223'
L6	N08°E	227'
L7	N03°W	208'
L8	N26°W	51'

KOCH EXPLORATION COMPANY

LOCATION DRAWING FOR

AHU WYATT #25-43 SWD  
SECTION 25, T2N, R97W, 6th P.M.  
441' FSL 1959' FEL

FIGURE #3

ROBERT L. KAY  
REGISTERED  
1987 Alum. Cap. 7492  
0.4' High,  
Pile of Stones  
Steel Post  
LAND SURVEYOR  
Lat: 40.112961°  
Long: 108.217172°  
5-09-12

25 1/4 Section Line

Section 25  
Section 30

R 97  
W 96  
W W

500'00'54"E - 2641.27' (Meas.)

FEATURE

BUILDING NONE WITHIN 1 MILE RADIUS

LINE TABLE

LINE	BEARING	LENGTH	DESCRIPTION
L1	N09°W	216.03'	POWER LINE
L2	S74°E	603.58'	POND
L3	S72°E	918.40'	COUNTY ROAD 71
L4	SOUTH	441.47'	PROPERTY LINE
L4	N44°W	5.3 MILES	RAILROAD

1/16 Section Line

Oscar  
Wyatt

Power Line

OHP

OHP

OHP

OHP

OHP

OHP

OHP

OHP

OHP

OHP

OHP

OHP

OHP

OHP

OHP

OHP

OHP

OHP

OHP

OHP

OHP

OHP

OHP

OHP

OHP

OHP

OHP

OHP

OHP

OHP

OHP

OHP

OHP

OHP

OHP

OHP

OHP

OHP

OHP

OHP

OHP

OHP

OHP

OHP

OHP

OHP

OHP

OHP

OHP

OHP

OHP

OHP

OHP

OHP

OHP

OHP

OHP

OHP

OHP

OHP

OHP

OHP

OHP

OHP

OHP

OHP

OHP

OHP

OHP

OHP

OHP

OHP

OHP

OHP

OHP

OHP

OHP

OHP

OHP

OHP

OHP

OHP

OHP

OHP

OHP

OHP

OHP

OHP

OHP

OHP

OHP

OHP

OHP

OHP

OHP

OHP

OHP

OHP

OHP

OHP

OHP

OHP

OHP

OHP

OHP

OHP

OHP

OHP

OHP

OHP

OHP

OHP

OHP

OHP

OHP

OHP

OHP

OHP

OHP

OHP

OHP

OHP

OHP

OHP

OHP

OHP

OHP

OHP

OHP

OHP

OHP

OHP

OHP

OHP

OHP

OHP

OHP

OHP

OHP

OHP

OHP

OHP

OHP

OHP

OHP

OHP

OHP

OHP

OHP

OHP

OHP

OHP

OHP

OHP

OHP

OHP

OHP

OHP

OHP

OHP

OHP

OHP

OHP

OHP

OHP

OHP

OHP

OHP

OHP

OHP

OHP

OHP

OHP

OHP

OHP

OHP

OHP

OHP

OHP

OHP

OHP

OHP

OHP

OHP

OHP

OHP

OHP

OHP

OHP

OHP

OHP

OHP

OHP

OHP

OHP

OHP

OHP

OHP

OHP

OHP

OHP

OHP

OHP

OHP

OHP

OHP

OHP

OHP

OHP

OHP

OHP

OHP

OHP

OHP

OHP

OHP

OHP

OHP

OHP

OHP

OHP

OHP

OHP

OHP

OHP

OHP

OHP

OHP

OHP

OHP

OHP

OHP

OHP

OHP

OHP

OHP

OHP

OHP

OHP

OHP

OHP

OHP

OHP

OHP

OHP

OHP

OHP

OHP

OHP

OHP

OHP

OHP

OHP

OHP

OHP

OHP

OHP

OHP

OHP

OHP

OHP

OHP

OHP

OHP

OHP

OHP

OHP

OHP

OHP

OHP

OHP

OHP

OHP

OHP

OHP

OHP

OHP

OHP

OHP

OHP

OHP

OHP

OHP

OHP

OHP

OHP

OHP

OHP

OHP

OHP

OHP

OHP

OHP

OHP

OHP

OHP

OHP

OHP

OHP

OHP

OHP

OHP

OHP

OHP

OHP

OHP

OHP

OHP

OHP

OHP

OHP

OHP

OHP

OHP

OHP

OHP

OHP

O